

GRANT COUNTY CERTIFIED LAND CORNER

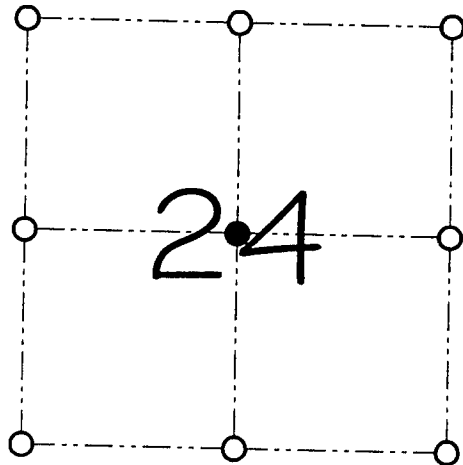
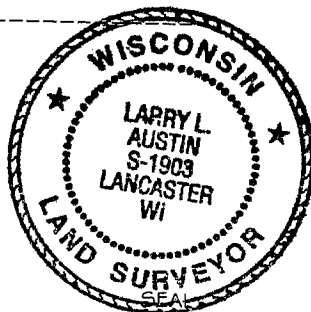
CORNER NUMBER 79A

CERTIFICATE:

I, Larry L. Austin, do hereby certify that on the 7th day of July, 2000, I found no evidence of the Center of Section 24, Town 3 North, Range 4 West, of the 4th Principal Meridian, and I re-established said corner according to the Wisconsin statutes as shown and described hereon.

Dated this 28th day of July, 2000

Larry L. Austin
Larry L. Austin S-1903



● = CORNER LOCATION
CENTER OF SECTION 24, T 3 N R 5 W TOWN OF CASSVILLE

HISTORY OF ORIGINAL CORNER ESTABLISHMENT:

Corner was never originally set. In 1857 Hayden set the center equadistant on the East-West 1/4 line. In 1868 Joel Barber set the corner at an intersection of quarter lines.

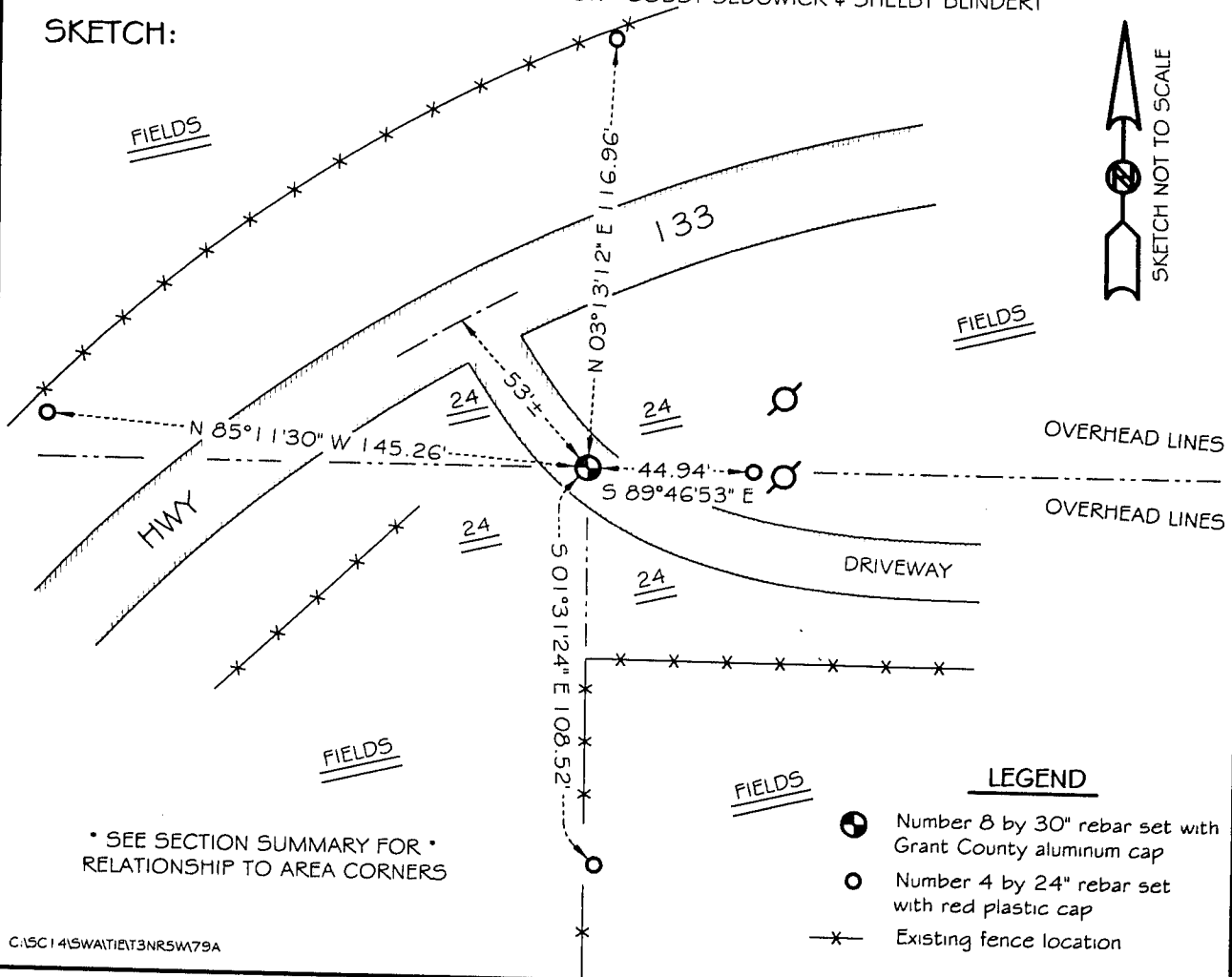
DESCRIPTION OF CORNER EVIDENCE FOUND:

I found no evidence of either corner. I reset the corner at the intersection of quarter lines. Verified this location using EDM & GPS methods.

DESCRIPTION OF CORNER AND WITNESS MONUMENTS, references and accessories used to perpetuate the original or re-established location of this corner

WITNESS TO THE CORNER LOCATION: BOBBY SEDGWICK & SHELBY BLINDERT

SKETCH:



- LEGEND**
- Number 8 by 30" rebar set with Grant County aluminum cap
 - Number 4 by 24" rebar set with red plastic cap
 - x- Existing fence location

* SEE SECTION SUMMARY FOR *
RELATIONSHIP TO AREA CORNERS