

GRANT COUNTY CERTIFIED LAND CORNER

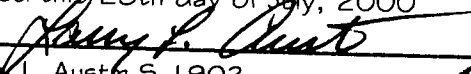
SHEET 1 OF 2

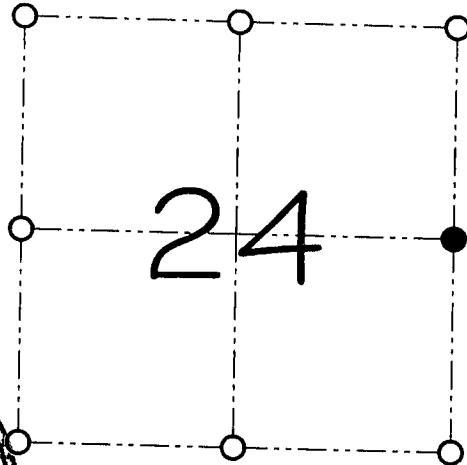
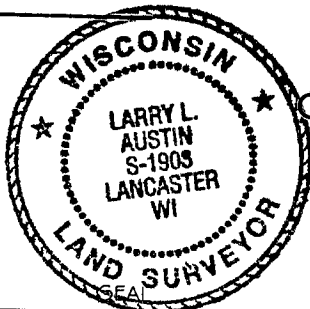
CORNER NUMBER 80

CERTIFICATE:

I, Larry L. Austin, do hereby certify that on the 30th day of June, 2000, I found no evidence of the East 1/4 corner of Section 24, Town 3 North, Range 5 West, of the 4th Principal Meridian, and I re-established said corner according to the Wisconsin statutes as shown and described hereon.

Dated this 28th day of July, 2000


Larry L. Austin S-1903



● = CORNER LOCATION

EAST 1/4 CORNER OF
SECTION 24, T 3 N R 5 W
TOWN OF CASSVILLE

HISTORY OF ORIGINAL CORNER ESTABLISHMENT:

Corner was set in 1832 by Lucius Lyon,
Sampson, Barber, and Overton tied to the original corner.

DESCRIPTION OF CORNER EVIDENCE FOUND:

I reset the corner proportionately between the Northeast and Southeast corners of Section 24. Verified this location using EDM & GPS methods.

DESCRIPTION OF CORNER AND WITNESS MONUMENTS, references and accessories used to perpetuate the original or re-established location of this corner

WITNESS TO THE CORNER LOCATION: SHANE AUSTIN & JERRY SPEILMAN

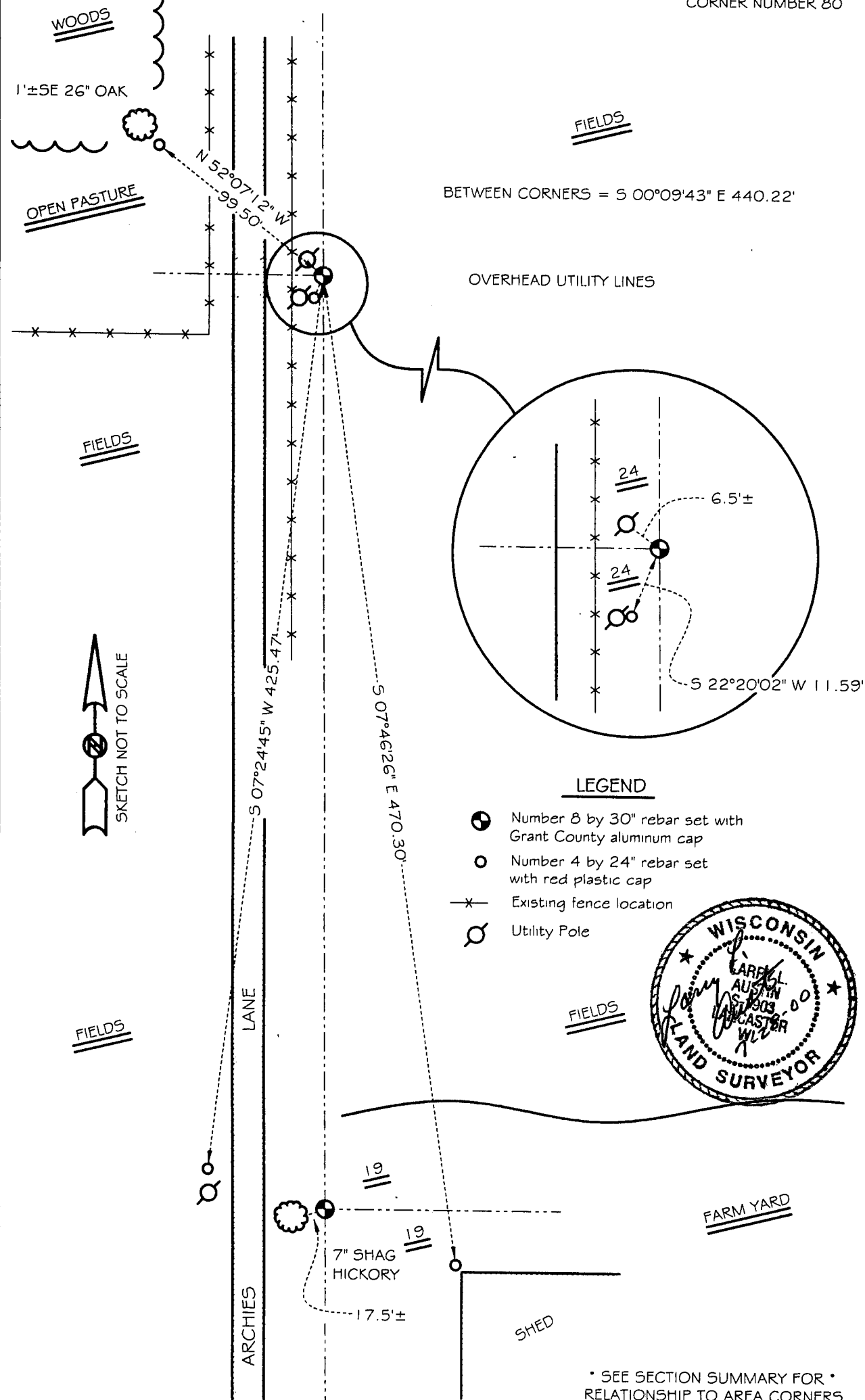
SKETCH:

SEE ATTACHED SHEET

GRANT COUNTY CERTIFIED LAND CORNER

SHEET 2 OF 2

CORNER NUMBER 80



WOODS

1'±SE 26" OAK

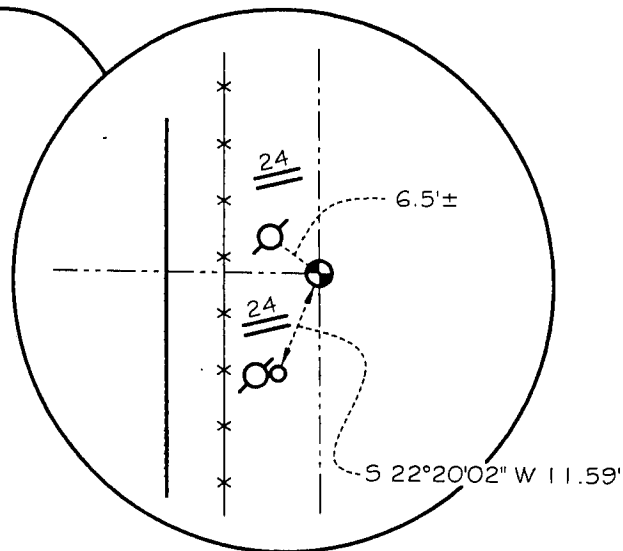
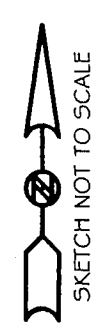
OPEN PASTURE

FIELDS

BETWEEN CORNERS = S 00°09'43" E 440.22'

OVERHEAD UTILITY LINES

FIELDS



LEGEND

- Number 8 by 30" rebar set with Grant County aluminum cap
- Number 4 by 24" rebar set with red plastic cap
- Existing fence location
- Utility Pole



FIELDS

FIELDS

FARM YARD

SHED

* SEE SECTION SUMMARY FOR *
RELATIONSHIP TO AREA CORNERS

GRANT COUNTY
CERTIFIED LAND CORNER

SHEET 1 OF 2

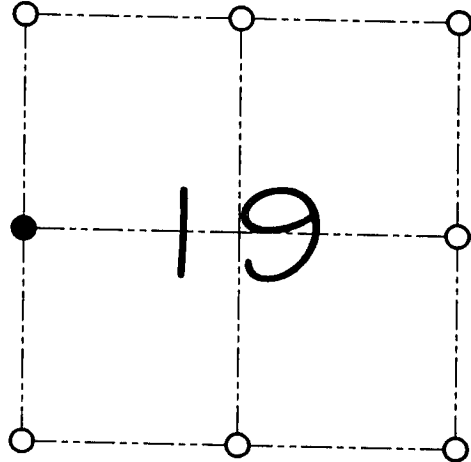
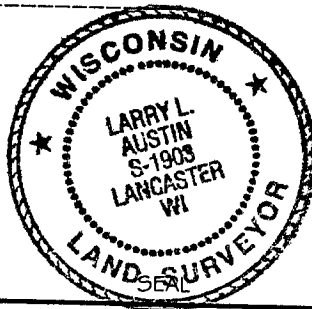
CORNER NUMBER 74

CERTIFICATE:

I, Larry L. Austin, do hereby certify that on the 30th day of June, 2000, I found no evidence of the West 1/4 corner of Section 19, Town 3 North, Range 4 West, of the 4th Principal Meridian, and I re-established said corner according to the Wisconsin statutes as shown and described hereon.

Dated this 28th day of July, 2000

Larry L. Austin
Larry L. Austin S-1903



● = CORNER LOCATION

WEST 1/4 CORNER OF
SECTION 19, T 3 N R 4 W
TOWN OF WATERLOO

HISTORY OF ORIGINAL CORNER ESTABLISHMENT:

Corner was never originally set. Overton tied to the corner in 1855.
In 1868 Barber tied to the corner. In 1896 Sampson tied to the corner.

DESCRIPTION OF CORNER EVIDENCE FOUND:

I found no evidence to the location of the corner. I reset the corner at the proportioned offset from the monumented East 1/4 of Section 24, T3N R5W. Verified this location using EDM & GPS methods.

DESCRIPTION OF CORNER AND WITNESS MONUMENTS, references and accessories used to perpetuate the original or re-established location of this corner

WITNESS TO THE CORNER LOCATION: SHANE AUSTIN & JERRY SPEILMAN

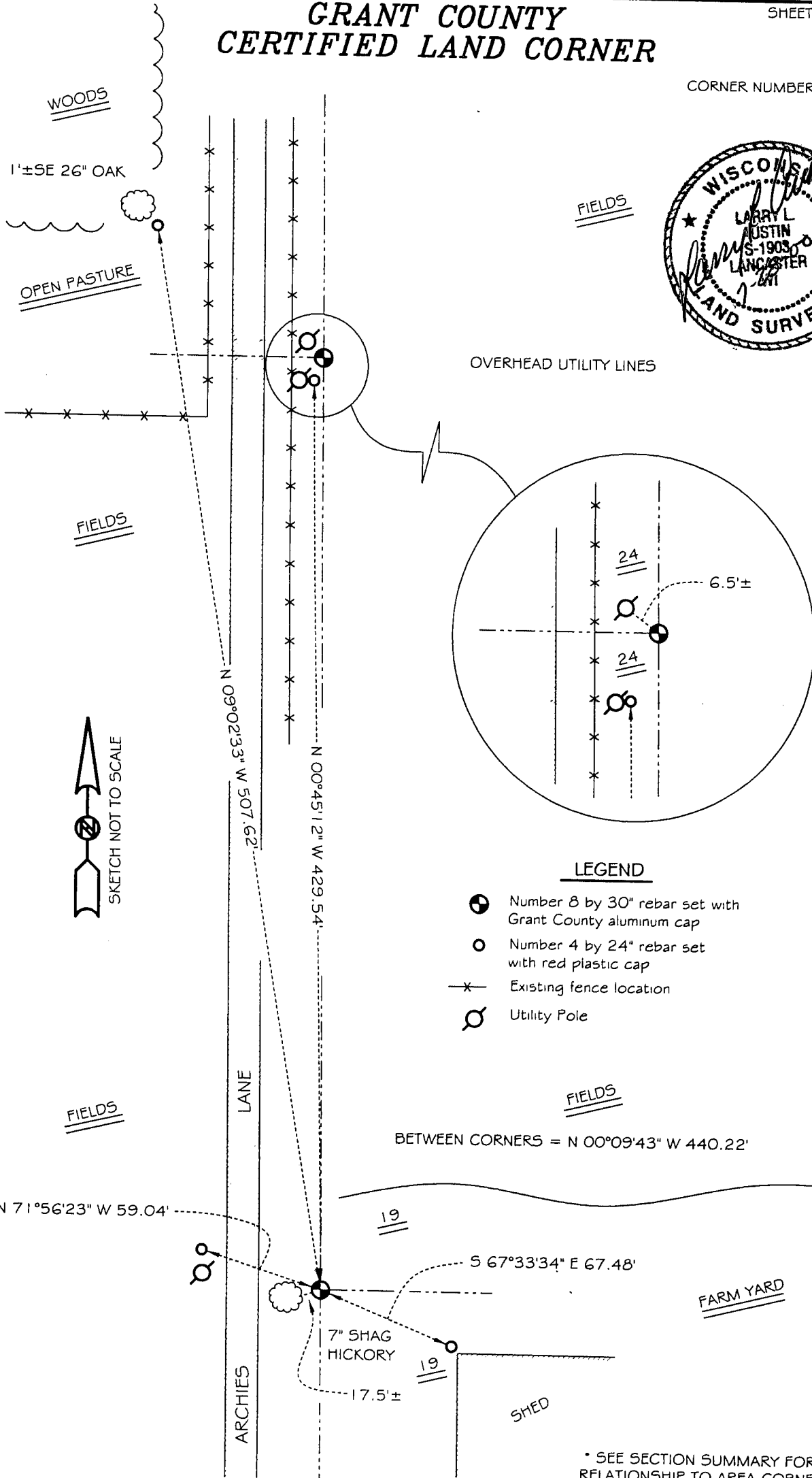
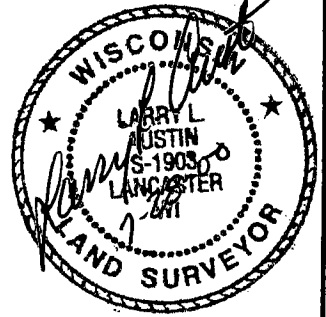
SKETCH:

SEE ATTACHED SHEET

GRANT COUNTY CERTIFIED LAND CORNER

SHEET 2 OF 2

CORNER NUMBER 74



• SEE SECTION SUMMARY FOR •
RELATIONSHIP TO AREA CORNERS