

# GRANT COUNTY CERTIFIED LAND CORNER

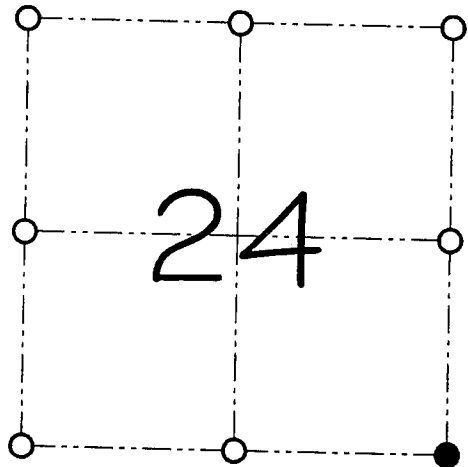
CORNER NUMBER 81

**CERTIFICATE:**

I, Larry L. Austin, do hereby certify that on the 29th day of June, 2000, I found no evidence of the Southeast corner of Section 24, Town 3 North, Range 5 West, of the 4th Principal Meridian, and I re-established said corner according to the Wisconsin statutes as shown and described hereon.

Dated this 28th day of July, 2000

*Larry L. Austin*  
Larry L. Austin S-1903



● = CORNER LOCATION

SOUTHEAST CORNER OF SECTION 24, T 3 N R 5 W TOWN OF CASSVILLE

**HISTORY OF ORIGINAL CORNER ESTABLISHMENT:**

Corner was originally set in 1832 by Lucius Lyon. Barber, Sampson, and Overton tied to the corner.

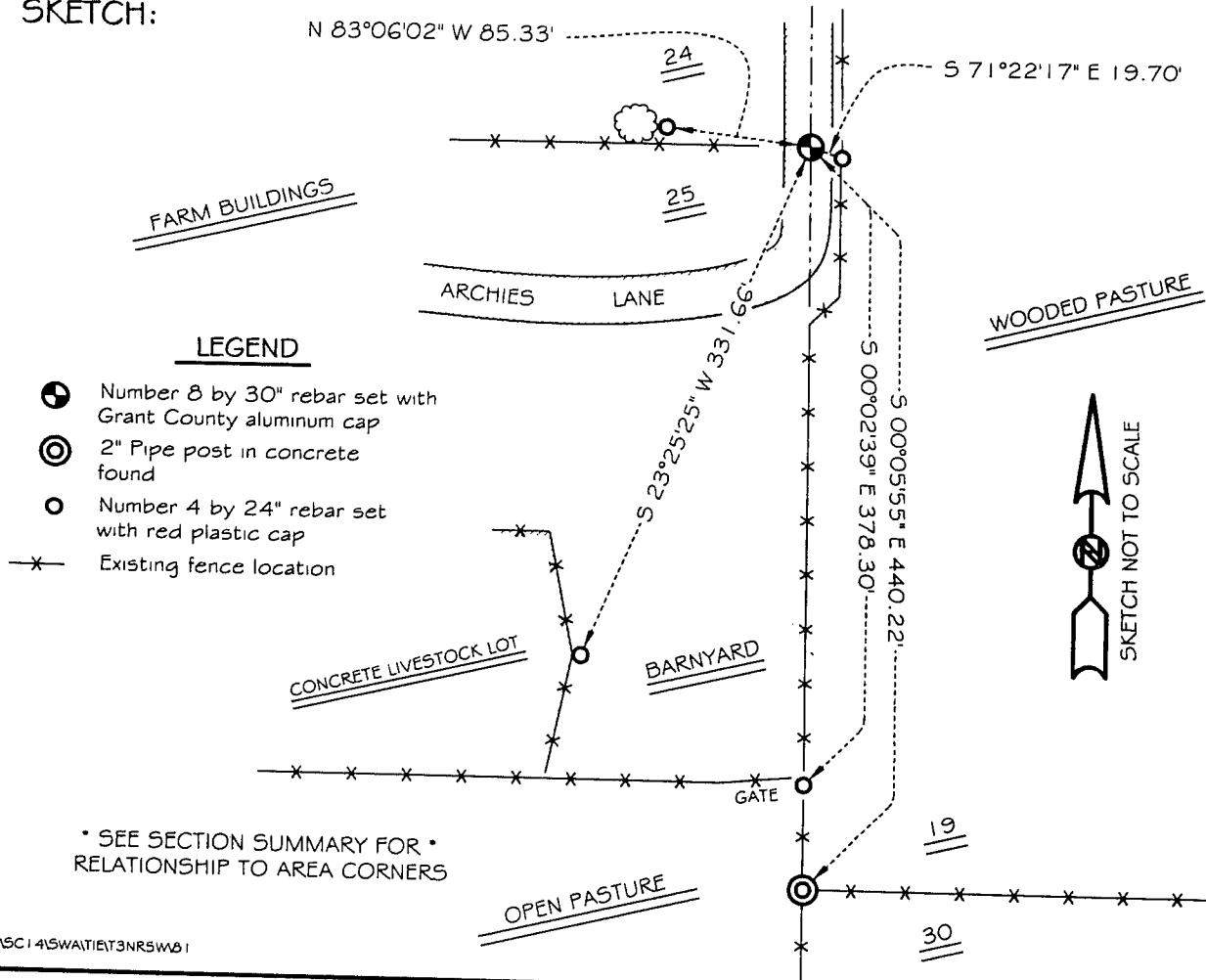
**DESCRIPTION OF CORNER EVIDENCE FOUND:**

I reset the corner at the recorded offset from the Southwest corner of Section 19. Verified it's location using EDM & GPS methods.

**DESCRIPTION OF CORNER AND WITNESS MONUMENTS, references and accessories used to perpetuate the original or re-established location of this corner**

WITNESS TO THE CORNER LOCATION: SHANE AUSTIN & JERRY SPEILMAN

**SKETCH:**



# GRANT COUNTY CERTIFIED LAND CORNER

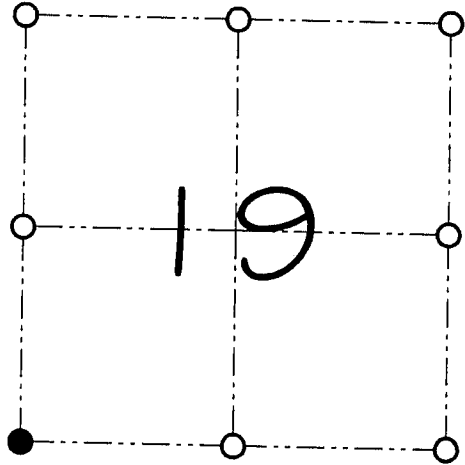
CORNER NUMBER 93

**CERTIFICATE:**

I, Larry L. Austin, do hereby certify that on the 29th day of June, 2000, I found evidence of the Southwest corner of Section 19, Town 3 North, Range 4 West, of the 4th Principal Meridian, and I re-established said corner according to the Wisconsin statutes as shown and described hereon.

Dated this 28th day of July, 2000

*Larry L. Austin*  
Larry L. Austin S-1903



● = CORNER LOCATION

SOUTHWEST CORNER OF SECTION 19, T 3 N R 4 W TOWN OF WATERLOO

**HISTORY OF ORIGINAL CORNER ESTABLISHMENT:**

Corner was originally set in 1833 by Lucius Lyon. In 1868 Barber tied to the corner. In 1896 Sampson also tied to the corner.

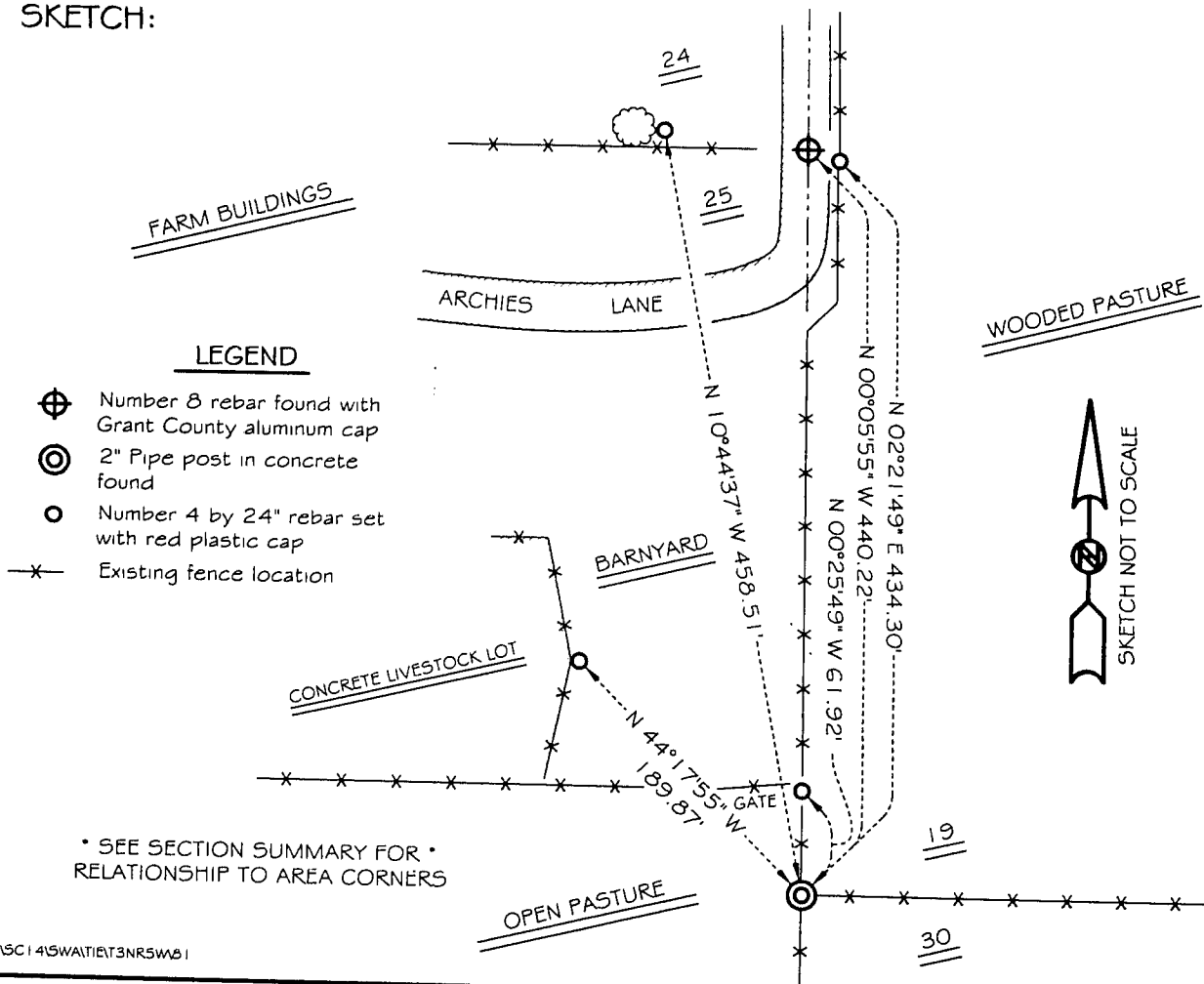
**DESCRIPTION OF CORNER EVIDENCE FOUND:**

I found a 2" iron pipe post at an occupied fence corner.  
I accepted it's location using EDM & GPS methods.

**DESCRIPTION OF CORNER AND WITNESS MONUMENTS, references and accessories used to perpetuate the original or re-established location of this corner**

WITNESS TO THE CORNER LOCATION: SHANE AUSTIN & JERRY SPEILMAN

**SKETCH:**



\* SEE SECTION SUMMARY FOR \*  
RELATIONSHIP TO AREA CORNERS