

CERTIFIED LAND CORNER

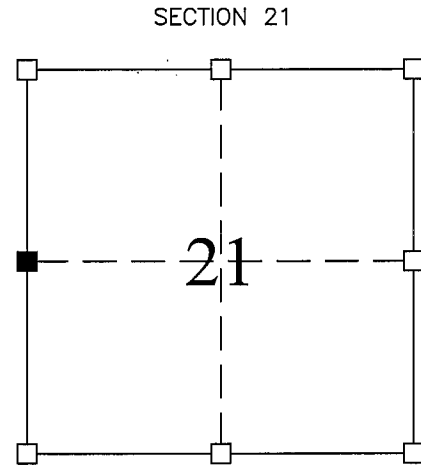
STATE OF WISCONSIN COUNTY OF GRANT

CERTIFICATE

I, Stanley J. King, do hereby certify that the corner location of this record was determined by me and/or under my direct supervision and that this U.S. public land survey monument record is correct and complete to the best of my knowledge and belief.

Dated this *8th day January 2003*

Stanley J. King
Stanley J. King S-2001



■ = Corner Location
T3N R5W
Town of: CASSVILLE

Seal:

History of original corner establishment:

DIVISION OF SECTION

Description of corner evidence found:

Section corner was set by taking the midpoint b/n the NW and SW corners for the N-S location and adjusting the E-W location to the existing fenceline found at the West 1/4.

Description of corner and witness monuments, references, and accessories used to

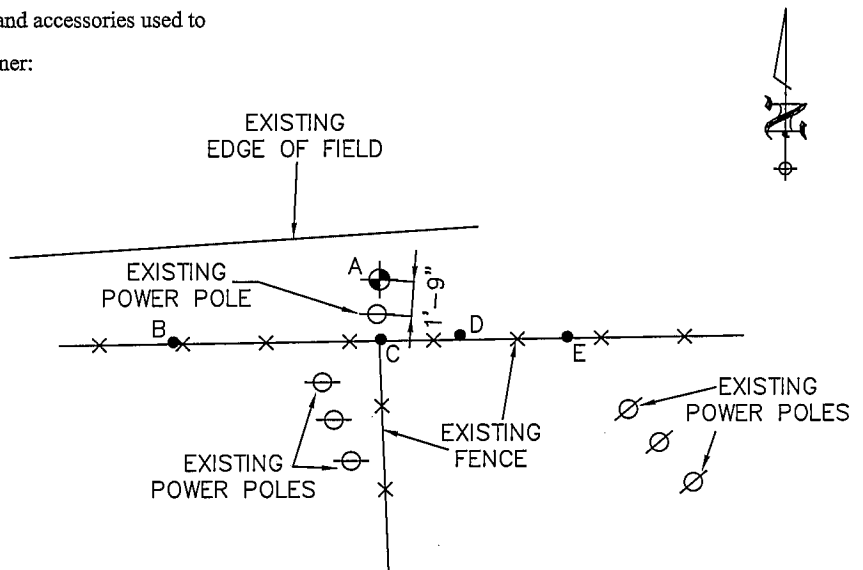
perpetuate the original or re-established location of this corner:

Witnesses to corner location:

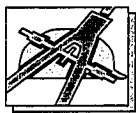
Kathie A. Kobbervig
Justin R. Persinger

LEGEND

- ⊙ = SECTION CORNER (GRANT CO. ALUM. MONUMENT)
- = TIE BAR (3/4" REBAR SET/FT)
- ⊖ = POWER POLE



- (A-B) = S 79°42'54" E 65.22'
- (A-C) = S 02°19'16" E 10.87'
- (A-D) = S 68°56'11" E 26.75'
- (A-E) = S 80°06'13" E 59.07'



BLACKHAWK
ENGINEERING, Ltd.

Civil & Municipal Engineers and Building Design
2 INSIGHT DRIVE OFFICE PHONE: (608) 348-4433
PLATTEVILLE, WISCONSIN FAX: (608) 348-4449

SURVEY CREW: DJD, KAK, JRP
DRAWN BY: KAK, JRP
DATE:
FILE: f:\acad12\2002\02-169\sectioncor.dwg