

GRANT COUNTY  
CERTIFIED LAND CORNER

CORNER NUMBER 75

CERTIFICATE:

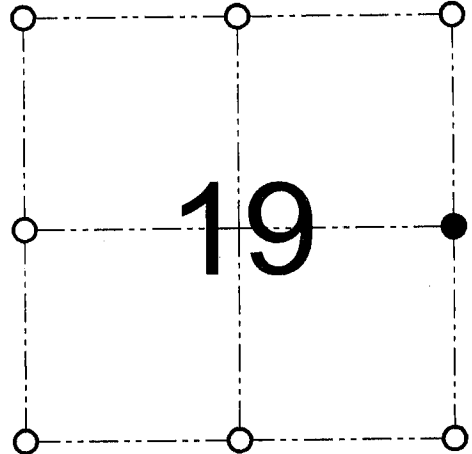
I, Larry L. Austin, do hereby certify that on the 12th day of January, 2001, I found evidence of the East 1/4 corner of Section 19, Town 3 North, Range 5 West, of the 4th Principal Meridian, and I re-established said corner according to the Wisconsin statutes as shown and described hereon.

Dated this 8th day of February, 2001

*Larry L. Austin*  
Larry L. Austin S-1903



SEAL



● = CORNER LOCATION

EAST 1/4 CORNER OF  
SECTION 19, T 3 N R 5 W  
TOWN OF CASSVILLE

HISTORY OF ORIGINAL CORNER ESTABLISHMENT:

Corner was originally set in 1833 by Lucius Lyon. Corner was tied to by Sampson in relation with Engler's Addition. In 1950 Homer Ralph tied to the corner in conjunction with Kleinpell's Addition.

DESCRIPTION OF CORNER EVIDENCE FOUND:

I found monumented evidence of Lot 1, Block "H" of Engler's Addition and retraced the location of the corner from these monuments. This location fit well with area corners and descriptions. Verified this location using EDM & GPS methods.

DESCRIPTION OF CORNER AND WITNESS MONUMENTS, references and accessories used to perpetuate the original or re-established location of this corner

WITNESS TO THE CORNER LOCATION: SHANE AUSTIN & SHELBY BLINDERT & BOBBY SEDGWICK

SKETCH:

SEE ATTACHED SHEET

SHEET 1 OF 2

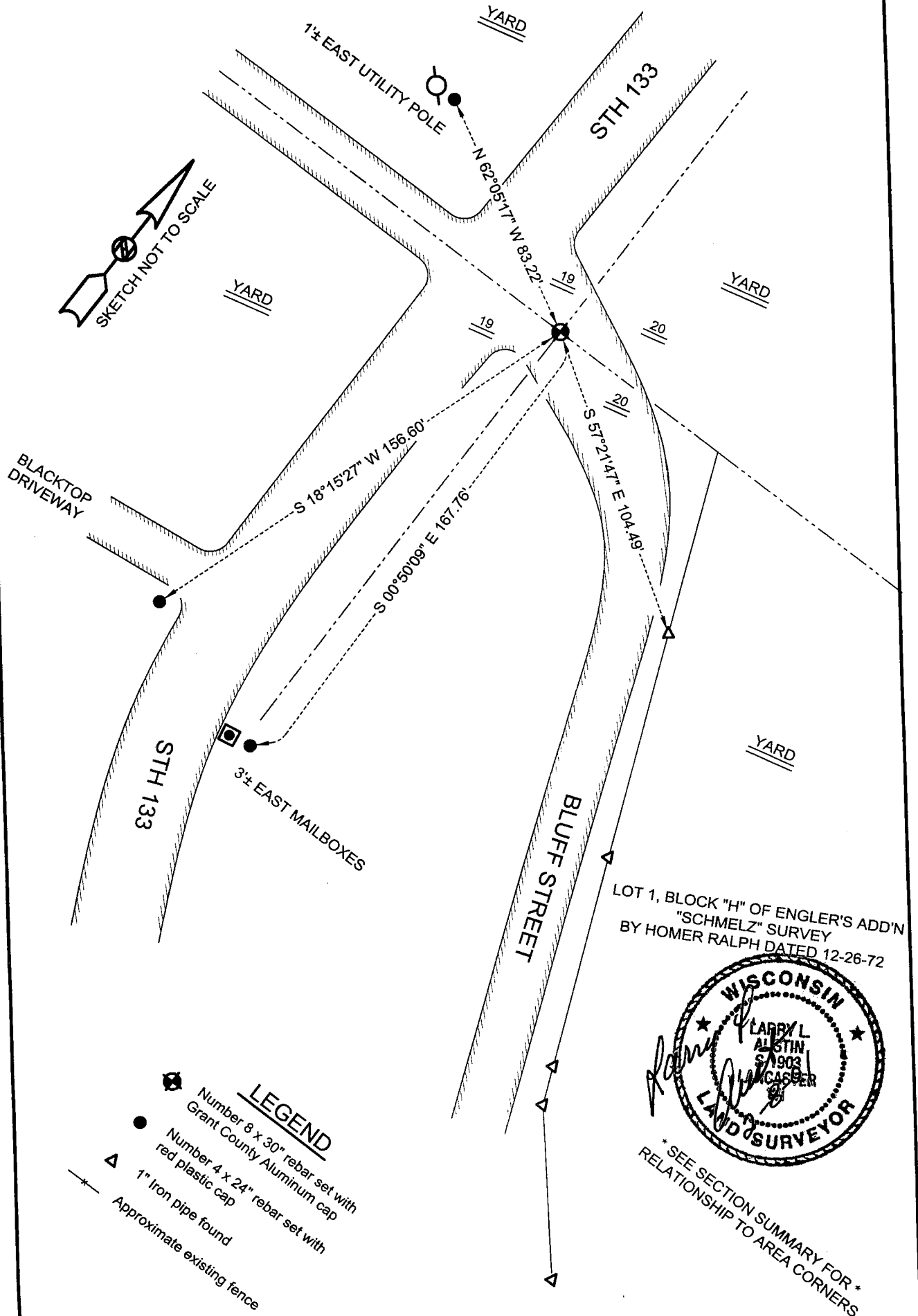
**AUSTIN ENGINEERING, LLC**  
4211 HWY 81 E, LANCASTER, WI 53813  
PHONE 608-723-6363 FAX 608-723-6702

FIELDBOOK: SDR33, 2008  
G:\CASSVILLE\WALZ  
C:\SC14\SWA\TIE\T3NR5W\75

DRAWN BY: SW AUSTIN  
APPROVED: LL AUSTIN  
CREW: BS - SB - SA - TF

# GRANT COUNTY CERTIFIED LAND CORNER

CORNER NUMBER 75



SHEET 2 OF 2

**AUSTIN ENGINEERING, LLC**  
4211 HWY 81 E, LANCASTER, WI 53813  
PHONE 608-723-6363 FAX 608-723-6702

FIELDBOOK: SDR33, 2008  
G:\CASSVILLE\WALZ  
C:\SC14\SWA\TIE\T3NR5W\75

DRAWN BY: SW AUSTIN  
APPROVED: LL AUSTIN  
CREW: BS - SB - SA - TF