

U.S. PUBLIC LAND SURVEY MONUMENT RECORD - GRANT COUNTY, WI

Section 19, Town 3 North Range 5 West, Town of Cassville

CERTIFICATE:

I, Aaron J. Austin, do hereby certify that the corner location on this record was determined by me and/or under my direct supervision and that this U.S. Public Land Survey Monument Record is correct and complete to the best of my knowledge and belief.

Dated this 1st day of December, 2014.

Aaron J. Austin
 Aaron J. Austin, S-2922



● = CORNER LOCATION

HISTORY OF CORNER ESTABLISHMENT:

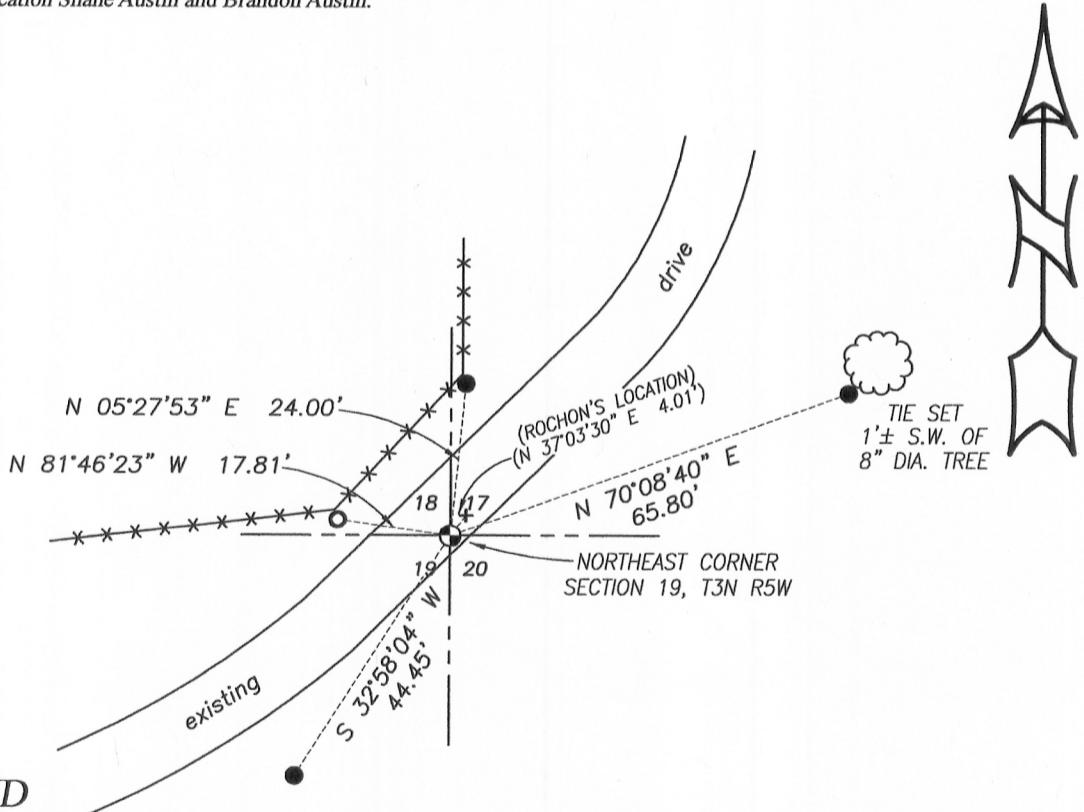
- 1833 Lucius Lyon set original corner.
- 1840 Freeman mentioned the corner in a Survey in Book A, Page 22.
- 1989 Larry Austin noted a 1" rebar at this location on a Survey in Book M, Page 95.
- 1989 Larry Austin found a 1" rebar on Certified Survey Map No. 284.
- 1991 Larry Austin found a 1" rebar on Certified Survey Map No. 311.
- 1992 Janiak found a 1" rebar on Certified Survey Map No. 318.
- 2002 Larry Austin noted a 1" rebar at this corner on a Survey in Book 11, Page 79.
- 2012 Michael Rochon set a 1 1/4" rebar on a Survey in Book 31, Page 18.
- 2013 I tied to this corner and found a No. 8 rebar on a Survey in Book 33, Page 89.

DESCRIPTION OF CORNER EVIDENCE FOUND:

I could not find a rebar in this area. It appears the rebar was removed during driveway construction. I did find a redtop marking the corner location. I verified this location after I tied to corners of the Survey by Larry Austin filed in Book 11, Page 79. This location also fit surveys done by Malliet and myself. I would like to note that after I tied into Rochon's survey filed in Book 31, Page 18, this corner location did not match his survey by approximately 4 feet. I set a No. 8 x 30" rebar with a Grant County Aluminum Cap at this location and verified it with E.D.M. and G.P.S. methods.

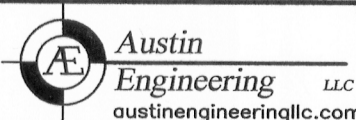
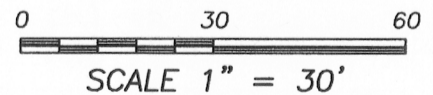
DESCRIPTION OF CORNER AND WITNESS MONUMENTS, references and accessories used to perpetuate the original or re-established location of this corner. Witnesses to corner location Shane Austin and Brandon Austin.

SKETCH:



LEGEND

- No. 8 x 30" rebar set with Grant County Aluminum Cap
- Number 4 x 12" Rebar set with red plastic "TIE" cap
- No. 4 Rebar found
- + No monument
- x-x- Approximate existing fence



4211 HWY 81 E, LANCASTER, WI 53813
 PHONE: 608-723-6363 FAX: 608-723-6702

H:\CRD\14s197-STRATTON
 H:\TIE\T3NR5W\71

FIELDBOOK: TDSR
 DRAWN BY: AJ AUSTIN
 CREW: SW AUSTIN