

**U.S. PUBLIC LAND SURVEY MONUMENT RECORD - GRANT COUNTY, WI**

Section 15, Town 3 North Range 5 West, Town of Cassville East

**CERTIFICATE:**

I, Chris D. Higgins, do hereby certify that the corner location on this record was determined by me and/or under my direct supervision and that this U.S. Public Land Survey Monument Record is correct and complete to the best of my knowledge and belief.

Dated this 1st day of November, 20 12.

*Chris D Higgins*

Chris D. Higgins, RLS-2937-8



● = CORNER LOCATION

HISTORY OF CORNER ESTABLISHMENT:

Land Survey Monument Record was found for this corner.

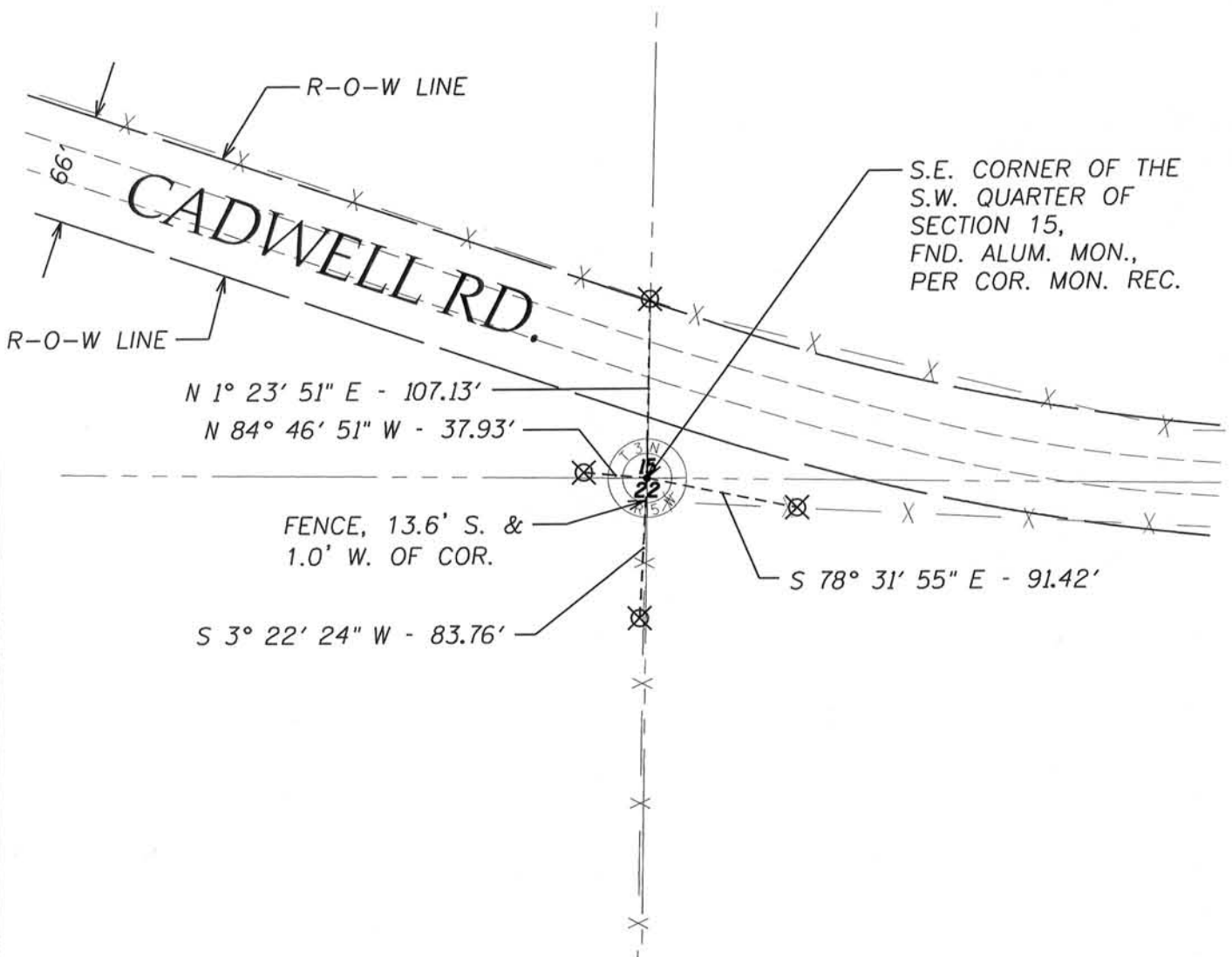
DESCRIPTION OF CORNER EVIDENCE FOUND:

Aluminum Monument found in place per Land Survey Monument Record by Larry Austin dated April 2, 1998. I agreed with location. Some ties were missing so set new tie points.

DESCRIPTION OF CORNER AND WITNESS MONUMENTS, references and accessories used to perpetuate the original or re-established location of this corner. Witnesses to corner location Ben Scheffner and Rey Munoz

**SKETCH:**

⊗ = 3/4" x 36" Rebar Set



NOV 27 2012

66

# GRANT COUNTY CERTIFIED LAND CORNER

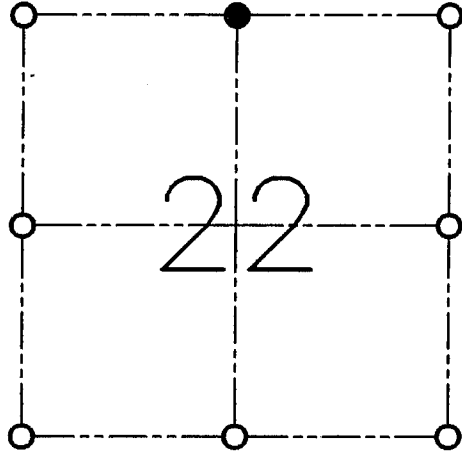
CORNER NO. 66

**CERTIFICATE:**

I, LARRY L. AUSTIN, DO HEREBY CERTIFY THAT ON SECOND DAY OF MARCH, 1998, I FOUND OCCUPATIONAL EVIDENCE OF THE NORTH 1/4 OF SECTION 22, TOWN 3 NORTH, RANGE 5 WEST, OF THE FOURTH PRINCIPAL MERIDIAN, AND I RE-ESTABLISHED SAID CORNER ACCORDING TO THE WISCONSIN STATUTES AS SHOWN AND DESCRIBED HEREON.

DATED THIS SECOND DAY OF APRIL, 1998

*Larry L. Austin*  
LARRY L. AUSTIN S-1903



● = CORNER LOCATION

**NORTH 1/4 OF SECTION 22  
T 3 N R 5 W  
TOWN OF CASSVILLE**

**HISTORY OF ORIGINAL CORNER ESTABLISHMENT:**

CORNER SET BY HARVEY PARKE.

**DESCRIPTION OF CORNER EVIDENCE FOUND:**

I SET THE CORNER ONLINE WITH FENCE SOUTH FOR EASTING; NORTHING WAS SET BY OCCUPIED CENTERLINE EAST OF THE CORNER. VERIFIED THIS LOCATION USING E.D.M. AND G.P.S. METHODS.

**DESCRIPTION OF CORNER AND WITNESS MONUMENTS, REFERENCES AND ACCESSORIES USED TO PERPETUATE THE ORIGINAL OR RE-ESTABLISHED LOCATION OF THIS CORNER:**

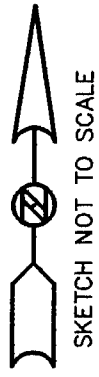
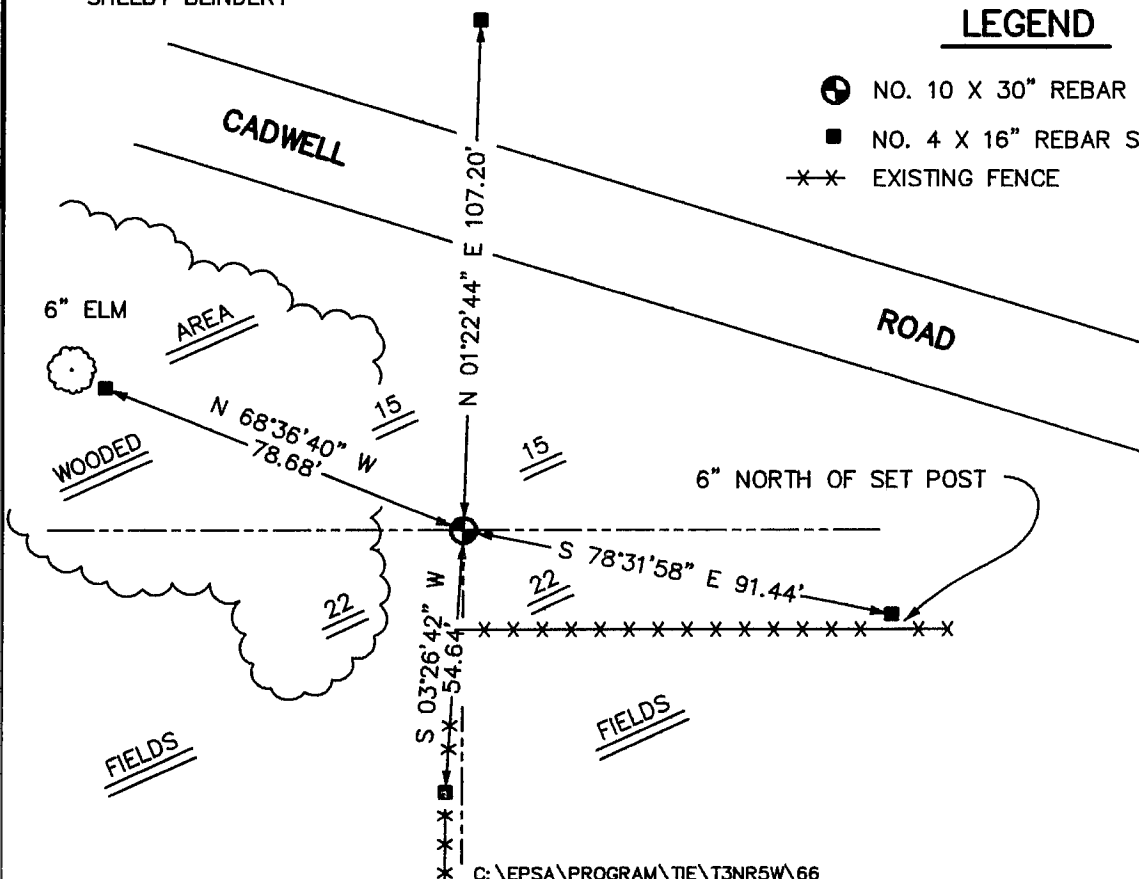
**WITNESS TO THE CORNER LOCATION:**

BOBBY SEDGWICK  
SHELBY BLINDERT

**SKETCH:**

LEGEND

- NO. 10 X 30" REBAR SET
- NO. 4 X 16" REBAR SET
- ×× EXISTING FENCE



SKETCH NOT TO SCALE