

GRANT COUNTY CERTIFIED LAND CORNER

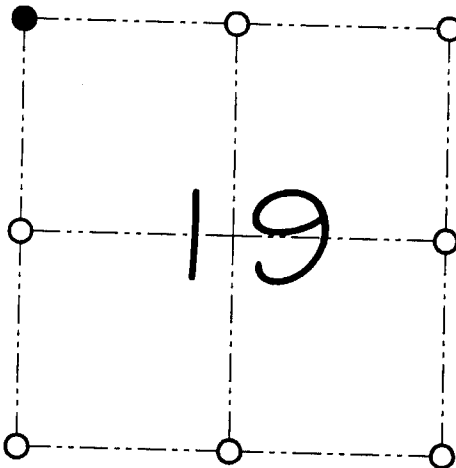
CORNER NUMBER 73

CERTIFICATE:

I, Larry L. Austin, do hereby certify that on the 7th day of July, 2000, I found evidence of the Northwest corner of Section 19, Town 3 North, Range 4 West, of the 4th Principal Meridian, and I re-established said corner according to the Wisconsin statutes as shown and described hereon.

Dated this 28th day of July, 2000

Larry L. Austin
Larry L. Austin S-1903



● = CORNER LOCATION

NORTHWEST CORNER OF
SECTION 19, T 3 N R 4 W
TOWN OF WATERLOO

HISTORY OF ORIGINAL CORNER ESTABLISHMENT:

Corner was originally set in 1833 by Lucius Lyon.
No other record of the corner was found.

DESCRIPTION OF CORNER EVIDENCE FOUND:

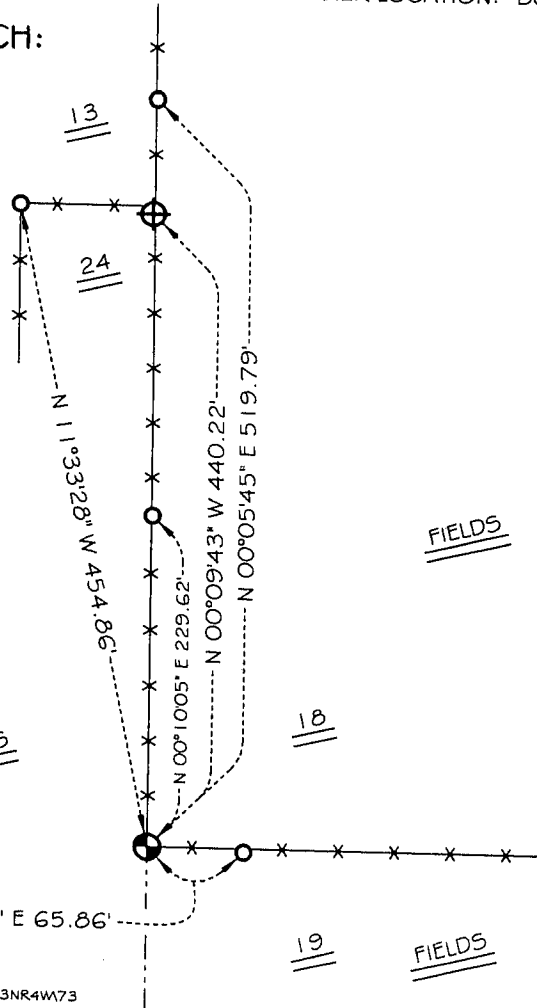
I found an Aluminum Monument at an occupied fence corner.
Verified it's location using EDM & GPS methods.

DESCRIPTION OF CORNER AND WITNESS MONUMENTS, references and accessories used to perpetuate the original or re-established location of this corner

WITNESS TO THE CORNER LOCATION: BOBBY SEDGWICK & SHELBY BLINDERT

SKETCH:

WOODS



LEGEND

- Aluminum Monument found
- ⊕ Number 8 rebar found with Grant County Aluminum Cap
- Number 4 by 24" rebar set with red plastic cap
- x— Existing fence location

* SEE SECTION SUMMARY FOR *
RELATIONSHIP TO AREA CORNERS



S 87°52'57" E 65.86'

GRANT COUNTY CERTIFIED LAND CORNER

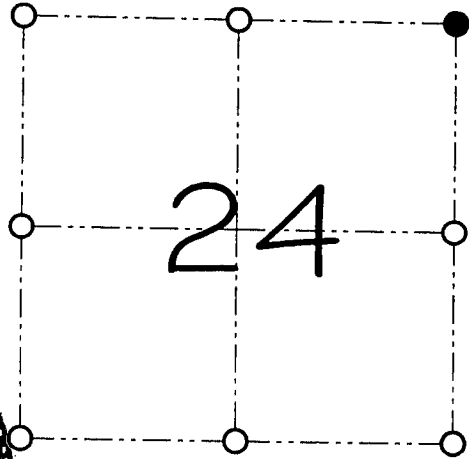
CORNER NUMBER 61

CERTIFICATE:

I, Larry L. Austin, do hereby certify that on the 7th day of July, 2000, I found no evidence of the Northeast corner of Section 24, Town 3 North, Range 5 West, of the 4th Principal Meridian, and I re-established said corner according to the Wisconsin statutes as shown and described hereon.

Dated this 28th day of July, 2000

Larry L. Austin
Larry L. Austin S-1903



● = CORNER LOCATION

NORTHEAST CORNER OF SECTION 24, T 3 N R 5 W TOWN OF CASSVILLE

HISTORY OF ORIGINAL CORNER ESTABLISHMENT:

Corner was originally set in 1832 by Lucius Lyon.
Overton and Barber tied to the corner.

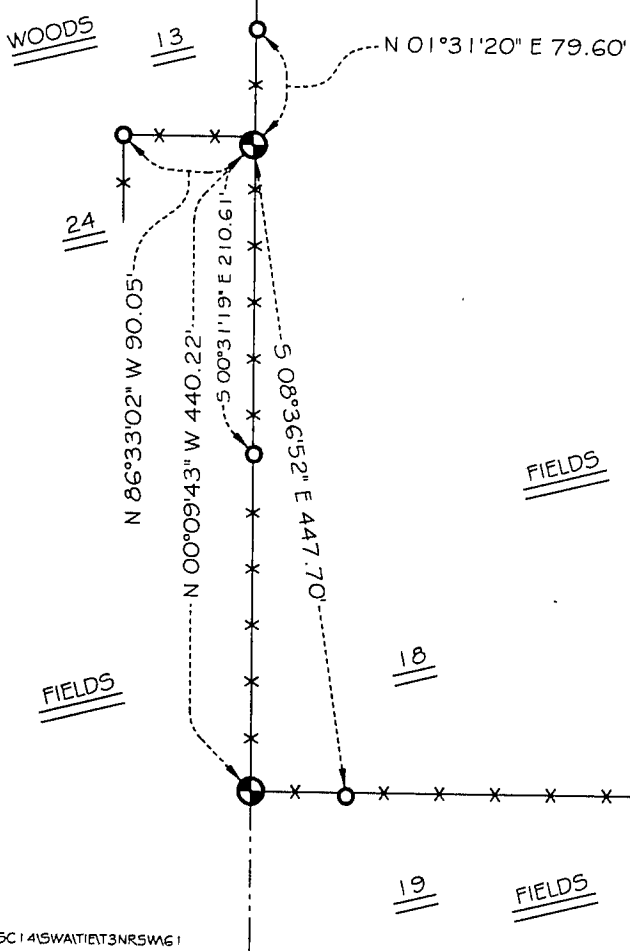
DESCRIPTION OF CORNER EVIDENCE FOUND:

I reset the corner at the recorded offset from the Northwest Corner of Section 19. Verified it's location using EDM & GPS methods.

DESCRIPTION OF CORNER AND WITNESS MONUMENTS, references and accessories used to perpetuate the original or re-established location of this corner

WITNESS TO THE CORNER LOCATION: BOBBY SEDGWICK & SHELBY BLINDERT

SKETCH:



LEGEND

- Number 8 by 30" rebar set with Grant County aluminum cap
- Number 4 by 24" rebar set with red plastic cap
- x— Existing fence location

* SEE SECTION SUMMARY FOR *
RELATIONSHIP TO AREA CORNERS

