

U.S. PUBLIC LAND SURVEY MONUMENT RECORD - GRANT COUNTY, WI

Section 15, Town 3 North Range 5 West, Town of Cassville East

CERTIFICATE:

I, Chris D. Higgins, do hereby certify that the corner location on this record was determined by me and/or under my direct supervision and that this U.S. Public Land Survey Monument Record is correct and complete to the best of my knowledge and belief.

Dated this 1st day of November, 20 12.

Chris D Higgins
Chris D. Higgins, RLS-2937-8



● = CORNER LOCATION

HISTORY OF CORNER ESTABLISHMENT:

Land Survey Monument Record was found for this corner.

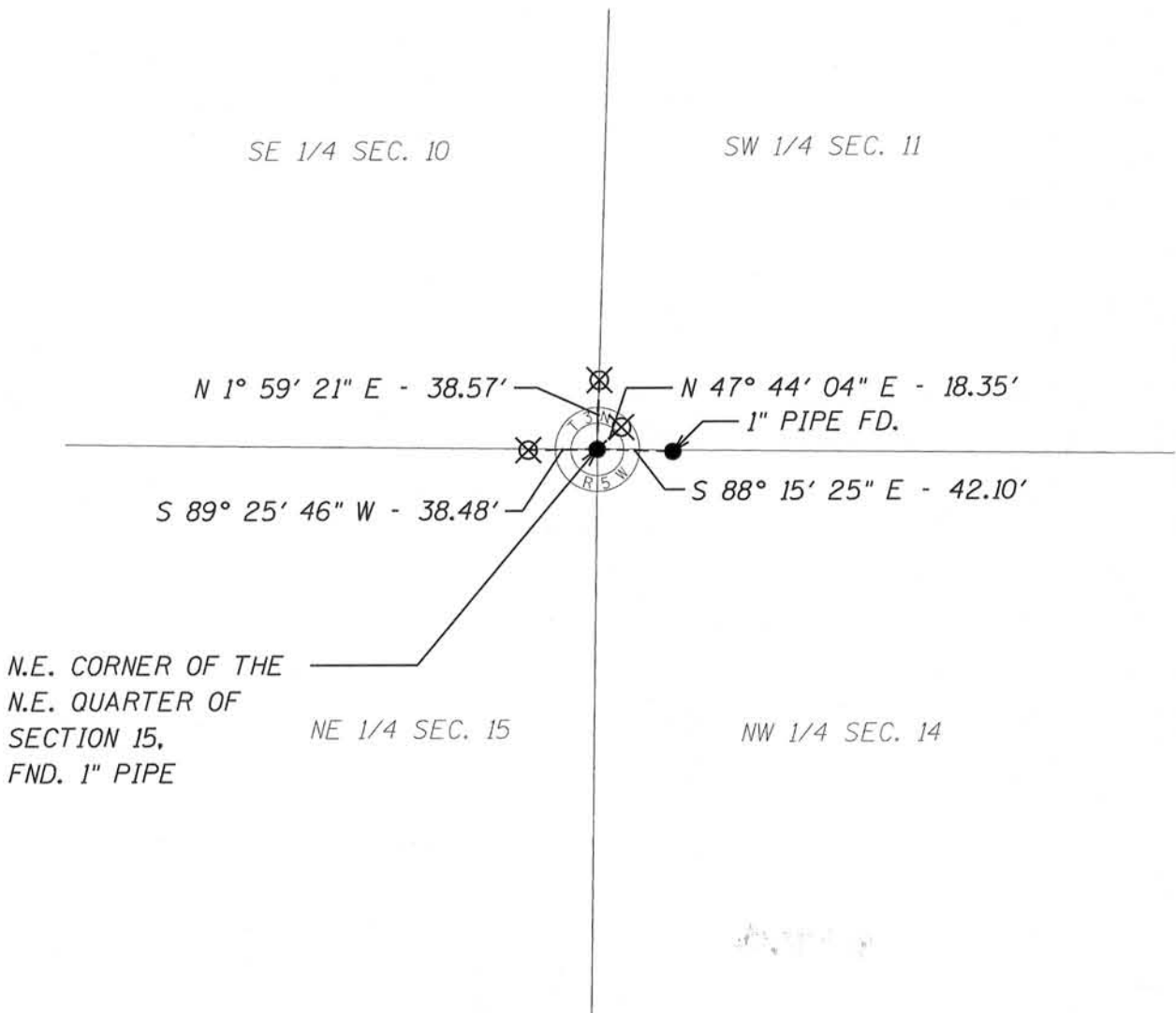
DESCRIPTION OF CORNER EVIDENCE FOUND:

A 1-inch pipe was found in place that was set by James Olson, September 24, 1984. I agreed with location. Some ties were missing so set new ones.

DESCRIPTION OF CORNER AND WITNESS MONUMENTS, references and accessories used to perpetuate the original or re-established location of this corner. Witnesses to corner location Ben Scheffner and Rey Munoz

SKETCH:

⊗ = 3/4" x 36" Rebar Set



NOV 27 2012

45

CERTIFIED LAND CORNER

Sec. 10, T3N, R5W

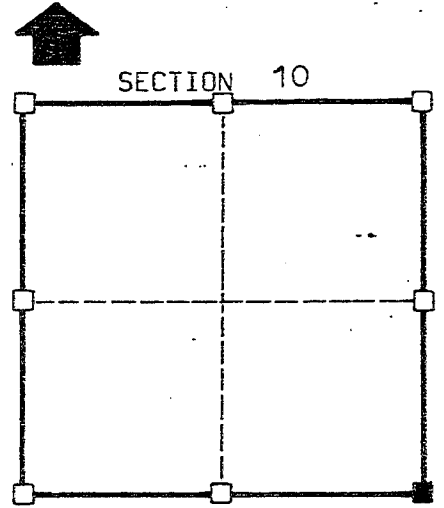
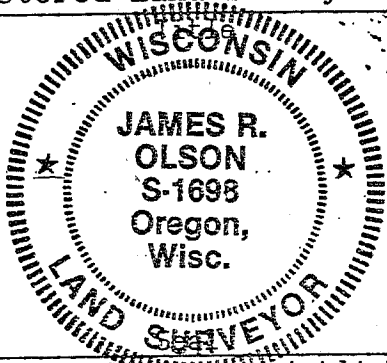
STATE OF WISCONSIN)
COUNTY OF GRANT) S.S.

CERTIFICATE

I, James R. Olson, do hereby certify that on the 17th day of Sept. 1984, I found (evidence) ~~(evidence)~~ of the SE corner of Sec. 10, T3N, R5W, Fourth Principal Meridian, and I re-established said corner according to the Wisconsin Statutes as shown and described hereon.

Dated this 24th day of September 1984

James R. Olson
Registered Land Surveyor S-1698



■ = corner location

T 3 N R 5 W

Town of: Cassville

History of original corner establishment:

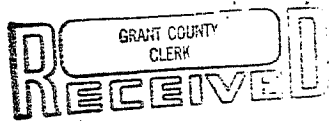
Surveys from 1858 and 1859 tie to the original government corner but there is no further record of this corner until a survey by Mr. Homer Ralph dated in 1976

Description of corner evidence found:

Corner set at fence corner as recorded on survey by Mr. Homer Ralph.

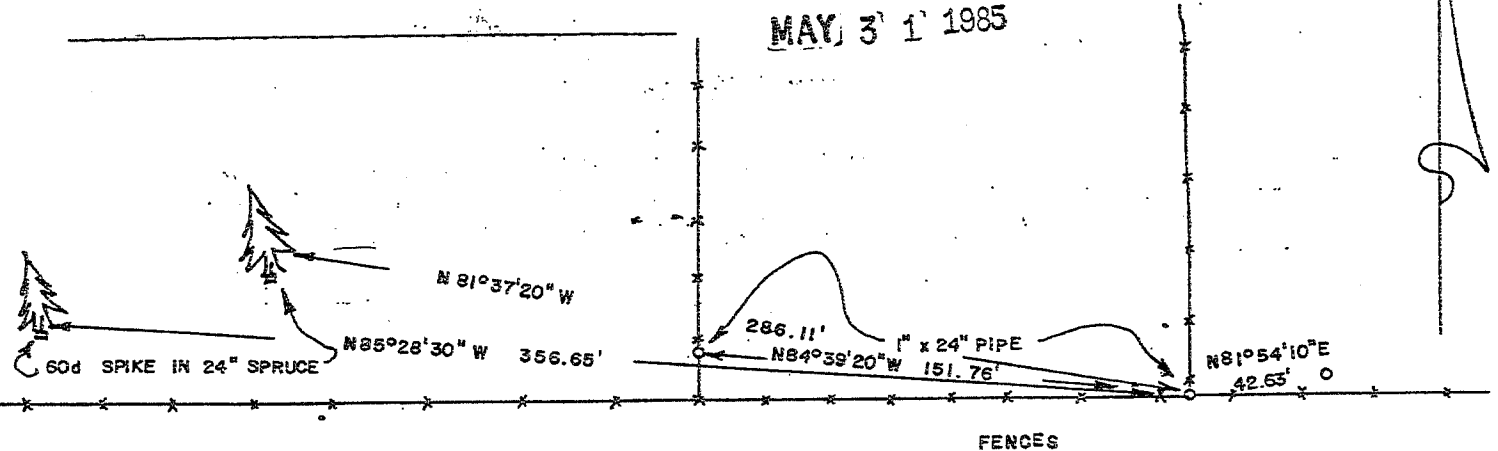
Description of corner and witness monuments, references and accessories used to perpetuate the original or re-established location of this corner:

Witnesses to corner location:



Sketch:
SCALE: 1" = 60'

MAY 3 1 1985



SURVEY CONTROL ORDER

Corner	East (X)	North (Y)	Elevation (Z)	Zone
Control Sta. Name				