

U.S. PUBLIC LAND SURVEY MONUMENT RECORD

INSTRUCTIONS: This record shall show the location of the corner and shall include all of the following nine elements. (A through I)

(A) Identify the corner by reference to the U.S. Public Land Survey System.

The West 1/4 corner of Section 10, Town 3 North, Range 5 West, Grant County, Wisconsin.

⑥	⑤	④	③	②	①
⑦	⑧	⑨	⑩	⑪	⑫
⑬	⑭	⑮	⑯	⑰	⑱
⑲	⑳	㉑	㉒	㉓	㉔
㉕	㉖	㉗	㉘	㉙	㉚
㉛	㉜	㉝	㉞	㉟	㊱

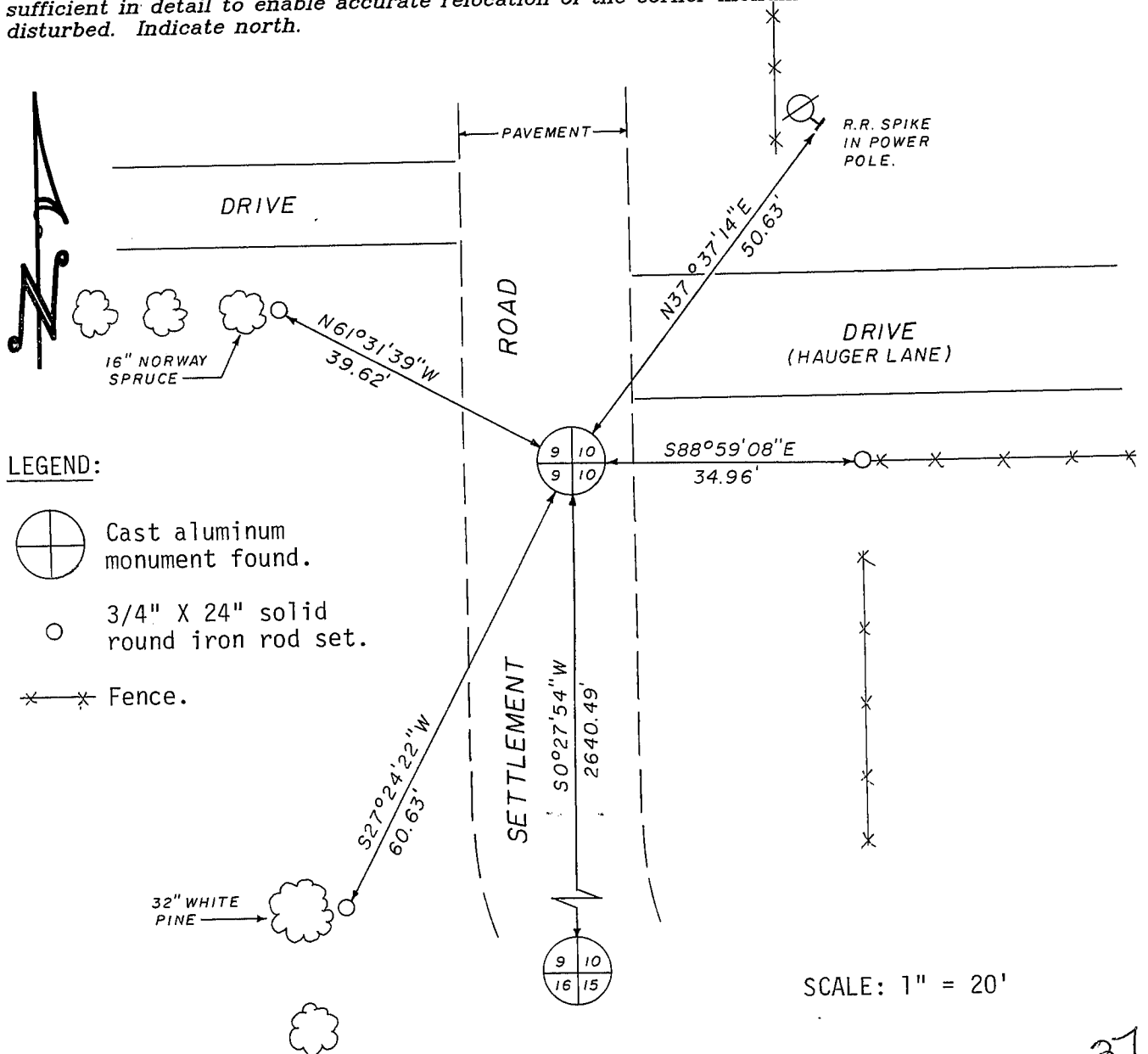
(B) Describe any record evidence, monument evidence, occupational evidence, testimonial evidence or any other material evidence you considered, and whether the monument was found or placed.

Found a Department of Transportation monument apparently set in preliminary work for a relocation of S.T.H. 81 that has yet to be performed. No tie sheet was filed by the state.

Verified that this corner was reestablished by Kurt Crooks in sub-contract work for said relocation.

(C) In the plan view drawing below, provide reference ties to at least 4 witness monuments, or, if the location is within a municipality, to at least 2 witness monuments. (Witness monuments shall be made of concrete, natural stone, iron or other equally durable material.) Describe witness monuments.

(D) Show a plan view drawing depicting the relevant monuments and the reference ties which is sufficient in detail to enable accurate relocation of the corner monument if the corner monument is disturbed. Indicate north.



(E) Describe any material discrepancy between the location of the corner as restored or reestablished and the location of that corner as previously restored or reestablished by distance and direction. Show the discrepancy on the plan view drawing under (D), above. Show the distances between the corner as previously restored or reestablished and (1) the corner as restored or reestablished, and (2) to at least 2 of the witness monuments shown on the drawing in (D), above.

None.

(F) Was the corner restored through acceptance of (1) an obliterated evidence location, or, (2) a found perpetuated location?

Found monument set by the D.O.T.

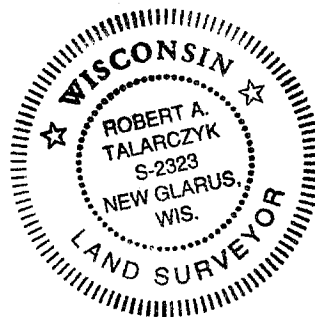
(G & H) Was the corner reestablished through lost corner proportionate methods? If so, show the method, including the directions and distances to other Public Land Survey corners used as evidence or used for proportioning in determining the corner location?

No

(I) I hereby certify that I have complied with the Wisconsin Statutes, Statutes of the United States, and the rules and regulations made by the Secretary of the Interior in the location of this corner.

Robert A. Talarczyk 02/12/97
Signature (Print or type name below) Date

Robert A. Talarczyk



TALARCZYK & ASSOC., INC.

W5105 KUBLY ROAD
P.O. BOX 235
NEW GLARUS, WI 53574
PHONE 608/527-5216
FAX 608/527-5357

Affix Registered Land Surveyor Seal