

U.S. PUBLIC LAND SURVEY MONUMENT RECORD - GRANT COUNTY, WI

Section 8, Town 4 North Range 3 West, Town of South Lancaster (a)

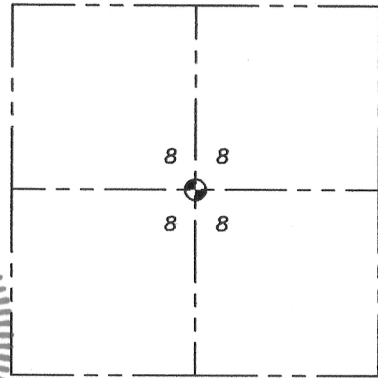
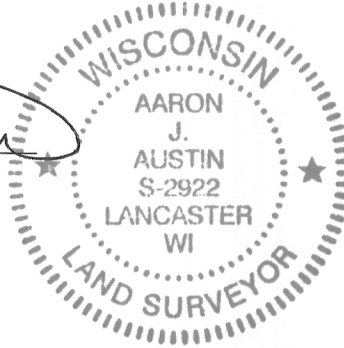
NOTE: This form is intended and designed to fulfill all requirements of the Wisconsin Administrative Code Chapter A-E 7.08, U.S. Public Land Survey Monument Record (3) (a) (b) (c) (d) (e) (f) (g) (h) (i).

CERTIFICATE: (i)

I, Aaron J. Austin, Wisconsin Professional Land Surveyor, do hereby certify that the corner location on this record was determined by me and/or under my direct supervision and that this U.S. Public Land Survey Monument Record is correct and complete to the best of my knowledge and belief.

Dated this 5th day of May, 2016.

Aaron J. Austin
 Aaron J. Austin, S-2922



⊕ = CORNER LOCATION

Grant County Coordinates:
 NAD 83 (2011)
 Northing: 519,081.40
 Easting: 807,561.87

HISTORY OF CORNER ESTABLISHMENT:

Corner was not set with original survey.

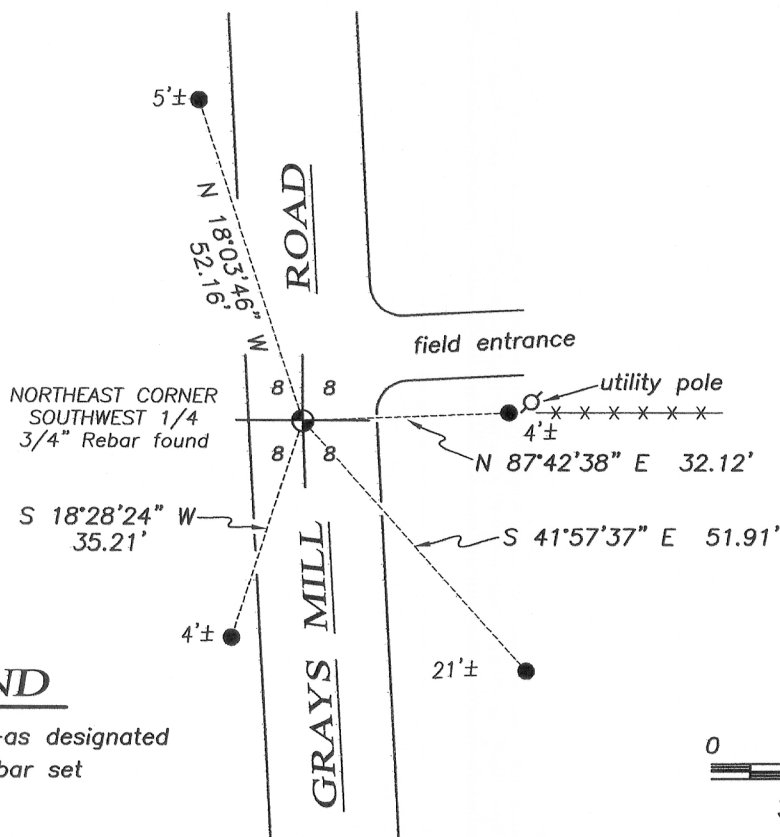
- 1840-Freeman set the corner on a Survey filed in Book A, Page 46.
- 1842-Freeman tied to the corner on a Survey filed in Book A, Page 136.
- 1969-Homer Ralph tied to the corner on a Survey filed in Book F, Page 165.
- 1982-Homer Ralph tied to the corner on a Survey filed as GCA, Page 649.
- 1985-John Cejka tied to the corner on a Survey filed in Book I, Page 158.
- 1996-Larry Austin tied to the corner on a Survey filed in Book X, Page 104.
- 2000-Bruce Bowden tied to the corner on a Survey filed in Book 7, Page 31.

DESCRIPTION OF CORNER EVIDENCE FOUND: (b) (f) (g) (h)

I found the 3/4" rebar set by Larry Austin in 1996 and accepted by Bruce Bowden on a survey in 2000. I set 4 witness corners after I verified it's location with E.D.M. and G.P.S. methods.

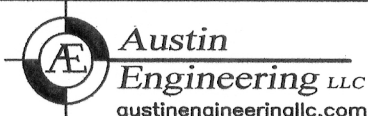
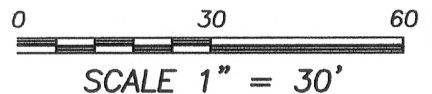
DESCRIPTION OF CORNER AND WITNESS MONUMENTS, references and accessories used to perpetuate the original or re-established location of this corner. (c) (d) (e)
 Witnesses to corner location Shane Austin.

SKETCH:



LEGEND

- ⊕ Section Corner—as designated
- 1/2" x 12" Rebar set
- x-x- Existing fence



4211 HWY 81 E, LANCASTER, WI 53813
 PHONE: 608-723-6363 FAX: 608-723-6702

JOB NO: 16S038
 H:CRD\16s038
 H:\TIE\T4NR3W\35_5

FIELDBOOK: TDSR
 DRAWN BY: AJ AUSTIN
 CREW: SW AUSTIN

35.5

JUN 24 2016