

U.S. PUBLIC LAND SURVEY MONUMENT RECORD - GRANT COUNTY,

Section 17, Town 3 North Range 5 West, Town of Cassville

CERTIFICATE:

I, Aaron J. Austin, do hereby certify that the corner location on this record was determined by me and/or under my direct supervision and that this U.S. Public Land Survey Monument Record is correct and complete to the best of my knowledge and belief.

Dated this 26th day of April, 2013,

Aaron J. Austin
 Aaron J. Austin, S-2922



● = CORNER LOCATION

HISTORY OF CORNER ESTABLISHMENT:

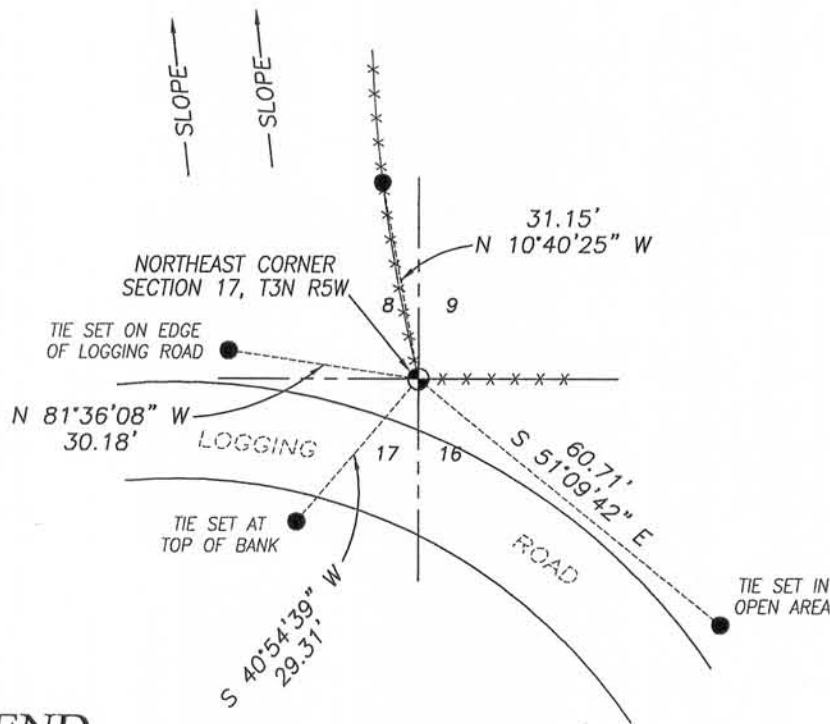
Corner was originally set in 1833 by Lucius Lyon. In 1874, Geo. McFall shown this corner on a survey filed in Book C, Page 276, Grant County Surveys. No other record found of the corner.

DESCRIPTION OF CORNER EVIDENCE FOUND:

I found and accepted an occupied fence corner and Set a No. 8 rebar with a Grant County Aluminum Cap at this location. I verified this location with G.P.S. and E.D.M. methods.

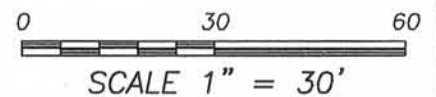
DESCRIPTION OF CORNER AND WITNESS MONUMENTS, references and accessories used to perpetuate the original or re-established location of this corner. Witnesses to corner location Shane Austin.

SKETCH:



LEGEND

- No. 8 x 30" rebar set with Grant County Aluminum Cap
- Number 4 x 24" Rebar set with red plastic "TIE" cap
- x-x- Approximate existing fence



4211 HWY 81 E, LANCASTER, WI 53813
 PHONE: 608-723-6363 FAX: 608-723-6702

JOB NO: 13s031
 G:\T3NR5W\17
 H:\TIE\T3NR5W\49

FIELDBOOK: TDSR
 DRAWN BY: AJ AUSTIN
 CREW: SWA