

U.S. PUBLIC LAND SURVEY MONUMENT RECORD - GRANT COUNTY, WI

Section 7, Town 3 North Range 5 West, Town of Cassville (a)

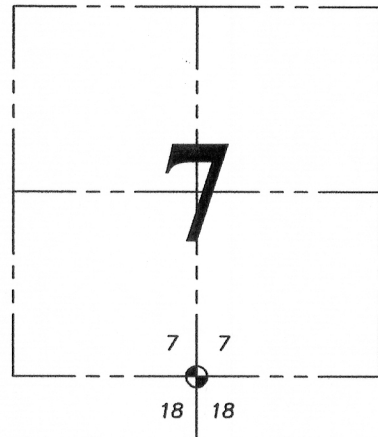
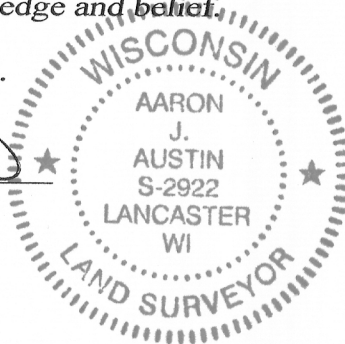
NOTE: This form is intended and designed to fulfill all requirements of the Wisconsin Administrative Code Chapter A-E 7.08, U.S. Public Land Survey Monument Record (3) (a) (b) (c) (d) (e) (f) (g) (h) (i).

CERTIFICATE: (i)

I, Aaron J. Austin, Wisconsin Professional Land Surveyor, do hereby certify that the corner location on this record was determined by me and/or under my direct supervision and that this U.S. Public Land Survey Monument Record is correct and complete to the best of my knowledge and belief.

Dated this 24th day of May, 2016.

Aaron J. Austin
 Aaron J. Austin, S-2922



⊕ = CORNER LOCATION

Grant County Coordinates:
 WISCORS NAD 83 (2011)
 Northing: 485,254.71
 Easting: 739,382.60

HISTORY OF CORNER ESTABLISHMENT:

1833-Lucius Lyon set original corner.
 1842-Freeman tied to the corner on Survey in Book A, Page 122.
 No other record found for the corner.

DESCRIPTION OF CORNER EVIDENCE FOUND: (b) (f) (g) (h)

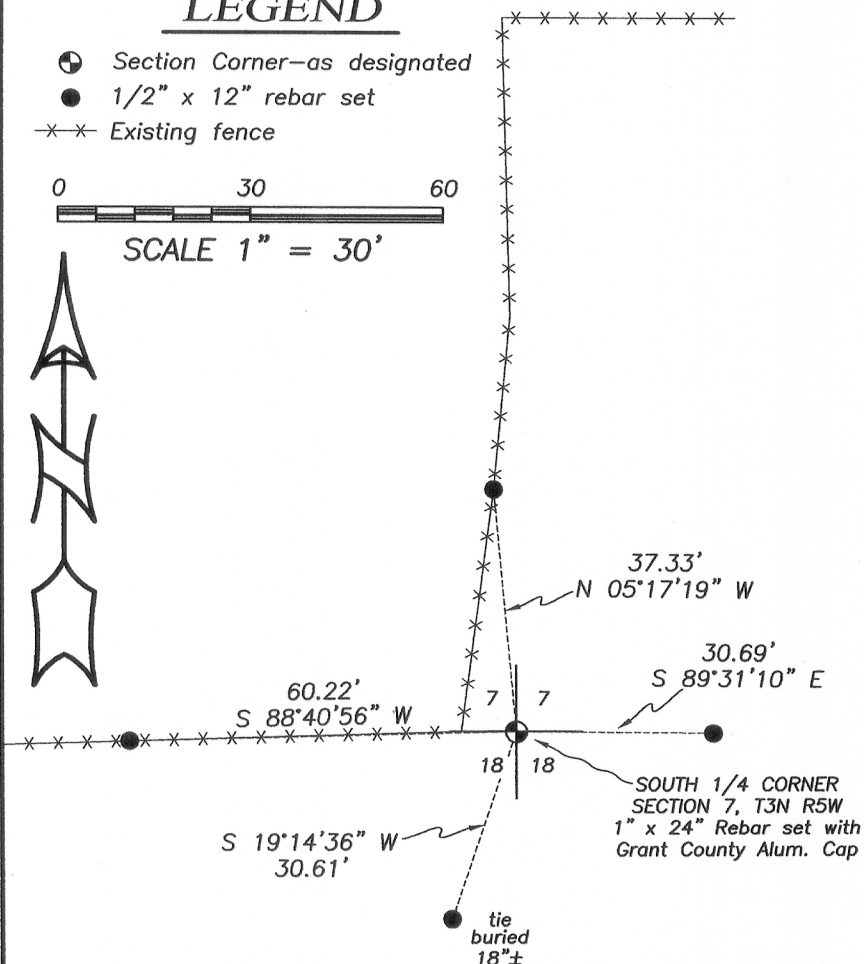
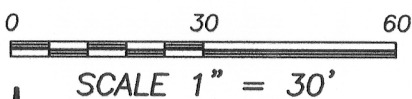
I set a 1" x 24" Rebar with a Grant County Aluminum Cap at the corner. I determined the corner's location by utilizing a projection from the North 1/4 corner of Section 7 through the Center of Section 7 (as established by Higgin's Survey filed in Book 32, Page 61) and intersected it with a fence West. I set 4 witness corners as shown hereon.

DESCRIPTION OF CORNER AND WITNESS MONUMENTS, references and accessories used to perpetuate the original or re-established location of this corner. (c) (d) (e)
 Witnesses to corner location Shane Austin.

SKETCH:

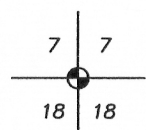
LEGEND

- ⊕ Section Corner—as designated
- 1/2" x 12" rebar set
- ×× Existing fence



SECTION DETAIL
 NOT TO SCALE

NORTH 1/4 CORNER
 SECTION 7, T3N R5W
 3/4" Rebar found



N.W. COR, SE 1/4
 SECTION 7, T3N R5W
 1/2" x 4 3/4" Steel
 Cotton Gin Spike set



SOUTH 1/4 CORNER
 SECTION 7, T3N R5W
 1" x 24" Rebar set with
 Grant County Alum. Cap



4211 HWY 81 E, LANCASTER, WI 53813
 PHONE: 608-723-6363 FAX: 608-723-6702

JOB NO: 15s242
 H:\CRD\15s242
 H:\TIE\T3NR5W\52

FIELDBOOK: TDSR
 DRAWN BY: AJ AUSTIN
 CREW: SW AUSTIN

0305070020

MAY 26 2016