

# U.S. PUBLIC LAND SURVEY MONUMENT RECORD - GRANT COUNTY, WI

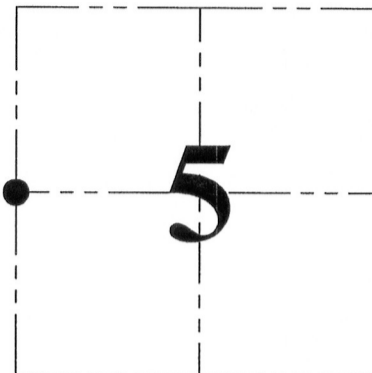
Section 5, Town 3 North Range 5 West, Town of Cassville

**CERTIFICATE:**

I, Aaron J. Austin, do hereby certify that the corner location on this record was determined by me and/or under my direct supervision and that this U.S. Public Land Survey Monument Record is correct and complete to the best of my knowledge and belief.

Dated this 30th day of Nov., 2012.

*Aaron J. Austin*  
 Aaron J. Austin, S-2922



● = CORNER LOCATION

HISTORY OF CORNER ESTABLISHMENT:

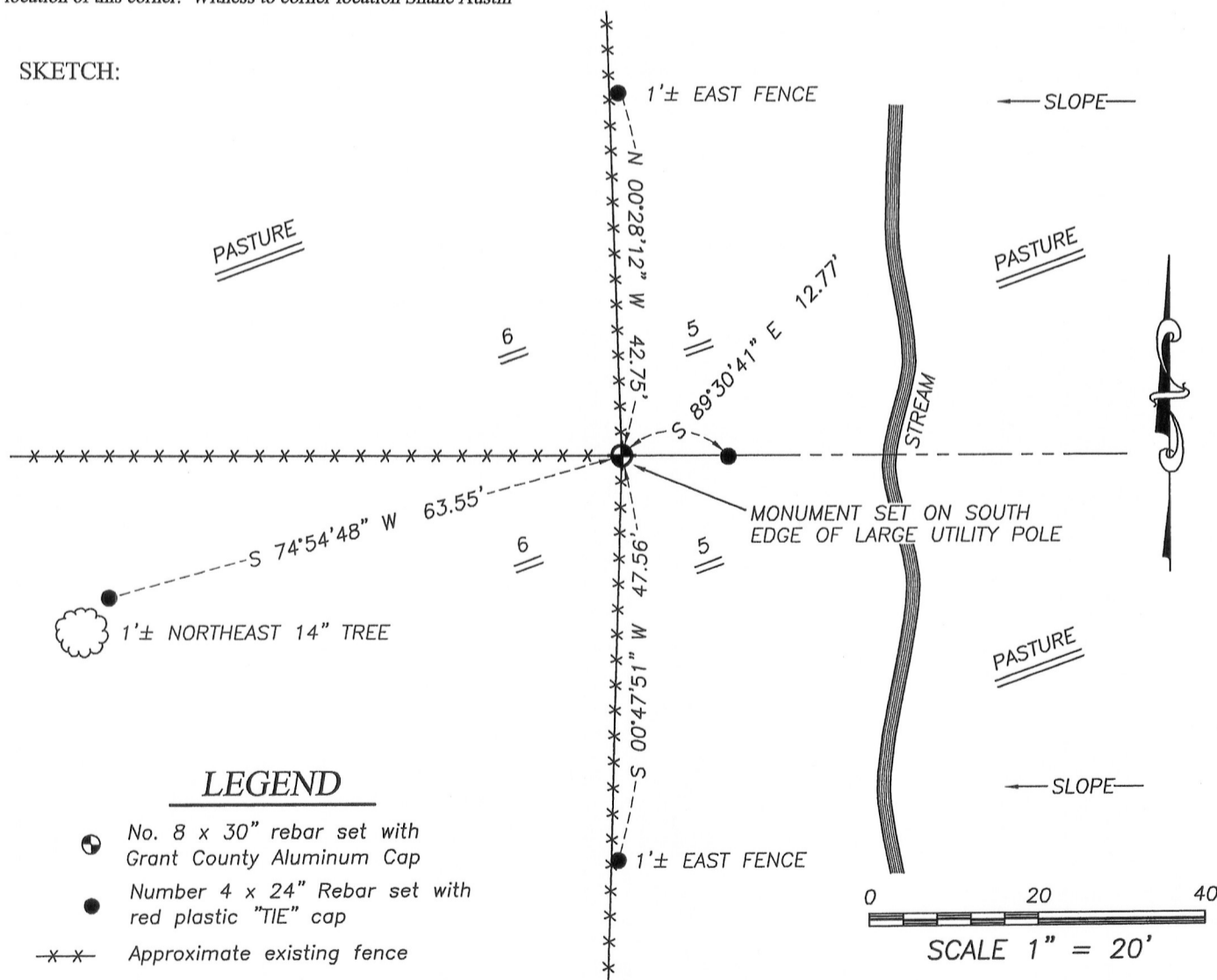
Corner was originally set in 1833 by Lucius Lyon. In 1842 Freeman tied to the corner filed in Book "A", Page 120 of Surveys. In 1856 Overton tied to the corner filed in Book "B", Page 513 of Surveys. The corner was also shown on a 1951 Plat of Right of Way Project S0200(2). No other record found for this corner.

DESCRIPTION OF CORNER EVIDENCE FOUND:

I found and accepted an occupied fence corner at this location.  
 I verified this location with G.P.S. methods of the area.

DESCRIPTION OF CORNER AND WITNESS MONUMENTS, references and accessories used to perpetuate the original or re-established location of this corner. Witness to corner location Shane Austin

SKETCH:



**LEGEND**

- No. 8 x 30" rebar set with Grant County Aluminum Cap
- Number 4 x 24" Rebar set with red plastic "TIE" cap
- x-x- Approximate existing fence



4211 HWY 81 E, LANCASTER, WI 53813  
 PHONE: 608-723-6363 FAX: 608-723-6702

JOB: 12s178  
 G:\T4NR5W\21  
 H:\TIE\T3NR5W\15

FIELDBOOK: TDSR  
 DRAWN BY: SW AUSTIN  
 CREW: SWA-AJA