

# U.S. PUBLIC LAND SURVEY MONUMENT RECORD - GRANT COUNTY, WI

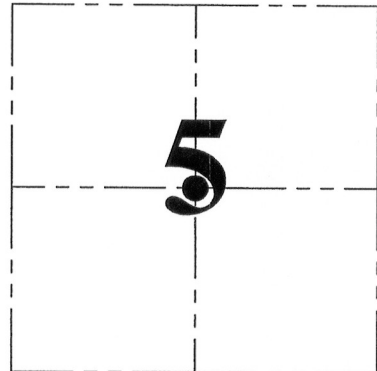
Section 5, Town 3 North Range 5 West, Town of Cassville

**CERTIFICATE:**

I, Aaron J. Austin, do hereby certify that the corner location on this record was determined by me and/or under my direct supervision and that this U.S. Public Land Survey Monument Record is correct and complete to the best of my knowledge and belief.

Dated this 30 th day of Nov., 2012.

*Aaron J. Austin*  
 Aaron J. Austin, S-2922



● = CORNER LOCATION

HISTORY OF CORNER ESTABLISHMENT:

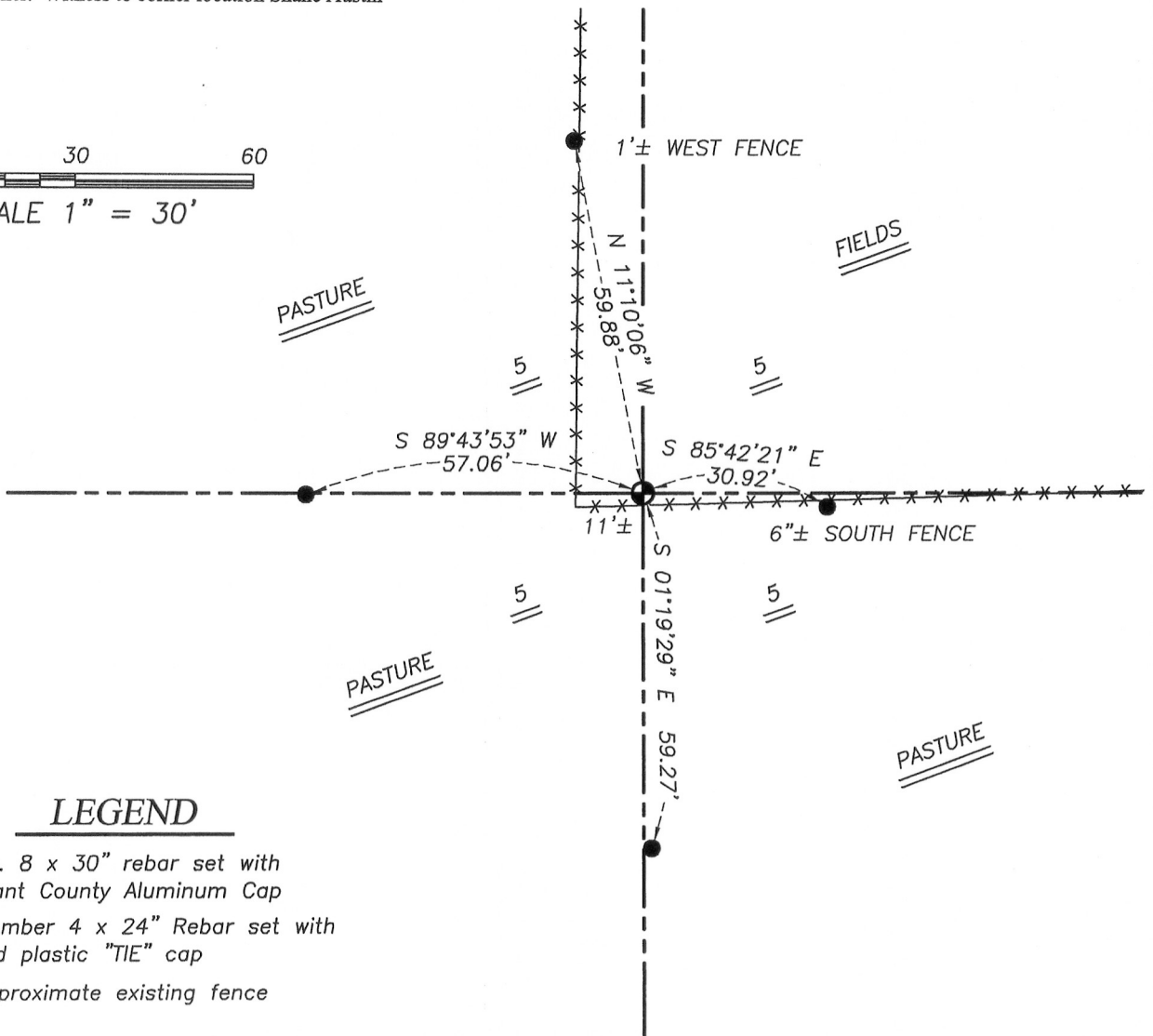
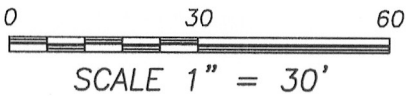
Corner was not set with original surveys. Corner was established by Overton in 1856 filed in Book "B", Page 513 of Surveys.

DESCRIPTION OF CORNER EVIDENCE FOUND:

No monument was mentioned on the Overton Survey. I set this corner at the intersection of the North-South 1/4 lines and the East-West 1/4 lines. I verified this location with G.P.S. methods of the area.

DESCRIPTION OF CORNER AND WITNESS MONUMENTS, references and accessories used to perpetuate the original or re-established location of this corner. Witness to corner location Shane Austin

**SKETCH:**



**LEGEND**

- No. 8 x 30" rebar set with Grant County Aluminum Cap
- Number 4 x 24" Rebar set with red plastic "TIE" cap
- x-x- Approximate existing fence



**Austin Engineering LLC**  
 austinengineeringllc.com

4211 HWY 81 E, LANCASTER, WI 53813  
 PHONE: 608-723-6363 FAX: 608-723-6702

JOB: CASS REALTY COMPANY  
 G:\T4NR5W\21  
 H:\TIE\T3NR5W\15A

FIELDBOOK: TDSR  
 DRAWN BY: SW AUSTIN  
 CREW: SWA-AJA