

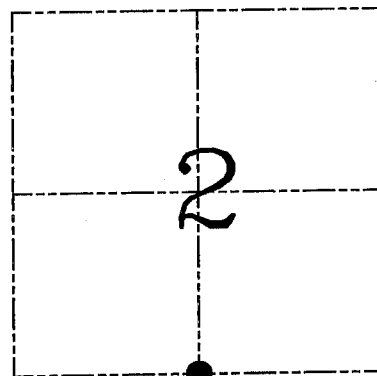
**U.S. PUBLIC LAND SURVEY MONUMENT RECORD – GRANT COUNTY, WI**  
**Section 2, Town 3 North Range 5 West, Town of Cassville**

CERTIFICATE

I, Larry L. Austin, do hereby certify that the corner location on this record was determined by me and/or under my direct supervision and that this U.S. public land survey monument record is correct and complete to the best of my knowledge and belief.

Dated this 27th day of May, 2004

*Larry L. Austin*  
 Larry L. Austin S-1903



● = CORNER LOCATION

HISTORY OF CORNER ESTABLISHMENT

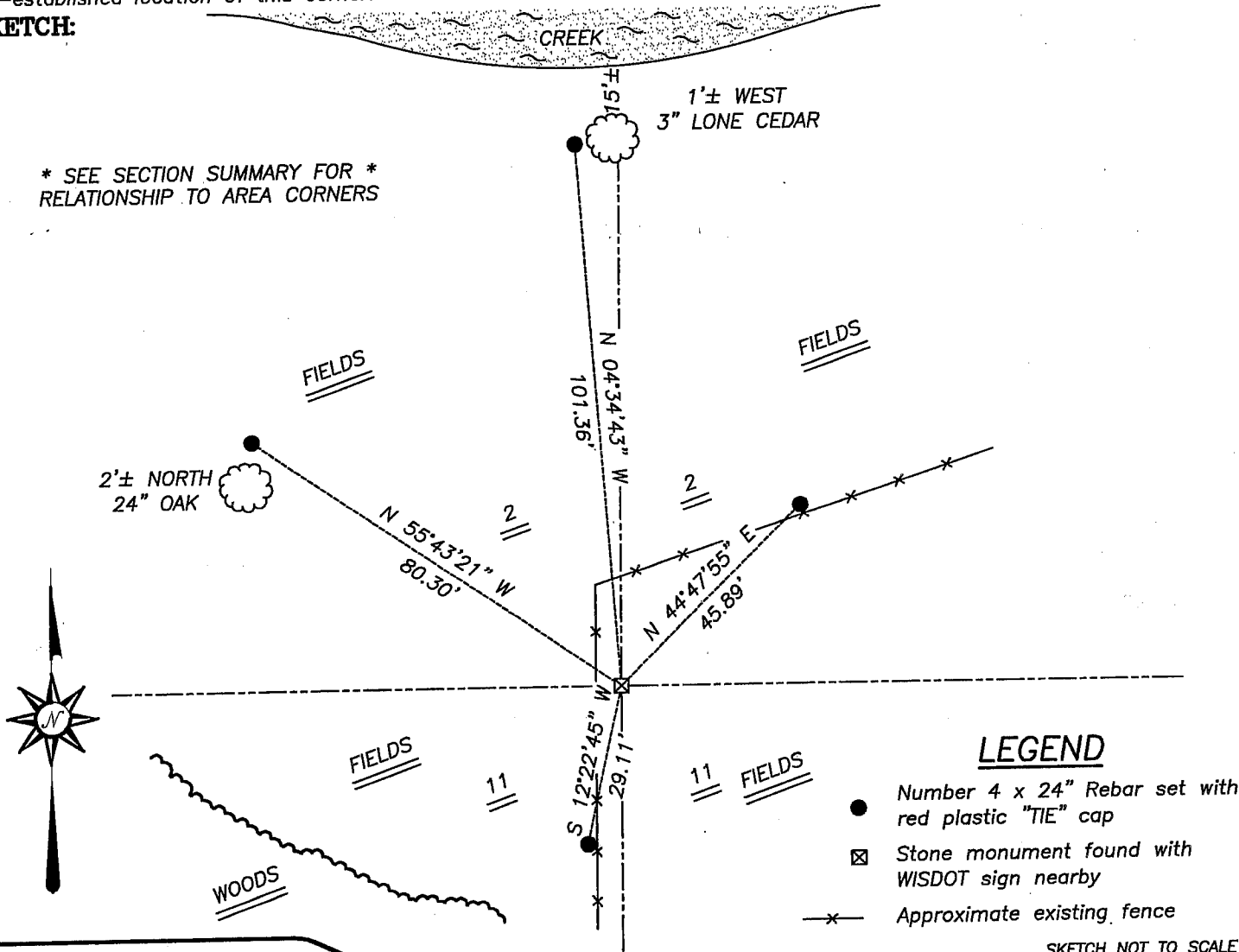
Corner was originally set in 1833 by Lucius Lyon. In 1854 John Clark was at the corner and established new bearings. In 1997 a sheet was filed stating a Bernsten aluminum monument with DOT aluminum cap was placed for a Wisconsin DOT project by Mr Crook.

DESCRIPTION OF CORNER EVIDENCE FOUND

While locating the monument I found a WISDOT survey sign at the base of a stone. This monument differed from the monument of record. Local land owner stated that Mr. Crook located the stone while surveying for WISDOT. I accepted the stone and set new ties. I verified this location using EDM & GPS methods.

DESCRIPTION OF CORNER AND WITNESS MONUMENTS, references and accessories used to perpetuate the original or re-established location of this corner. Witnesses to corner location Bobby Sedgwick & Shane Austin & Brad Hazen

**SKETCH:**

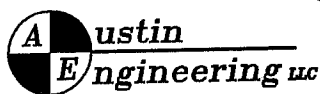


\* SEE SECTION SUMMARY FOR \*  
 RELATIONSHIP TO AREA CORNERS

LEGEND

- Number 4 x 24" Rebar set with red plastic "TIE" cap
- ☒ Stone monument found with WISDOT sign nearby
- x- Approximate existing fence

SKETCH NOT TO SCALE



4211 HWY 81 E, LANCASTER, WI 53813  
 PHONE 608-723-6363 FAX 608-723-6702

JOB NUMBER 03S268  
 FIELDBOOK: TSDR, 2327  
 G:\T4NR5W\34  
 H:\TIE\T3NR5W\24

DRAWN BY: C RUTTER  
 APPROVED: LL AUSTIN