

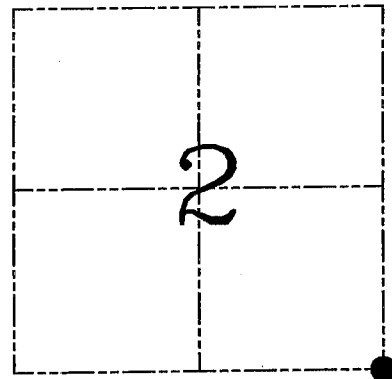
U.S. PUBLIC LAND SURVEY MONUMENT RECORD – GRANT COUNTY, WI
Section 2, Town 3 North Range 5 West, Town of Cassville

CERTIFICATE

I, Larry L. Austin, do hereby certify that the corner location on this record was determined by me and/or under my direct supervision and that this U.S. public land survey monument record is correct and complete to the best of my knowledge and belief.

Dated this 25th day of May, 2004

Larry L. Austin
 Larry L. Austin S-1903



● = CORNER LOCATION

HISTORY OF CORNER ESTABLISHMENT

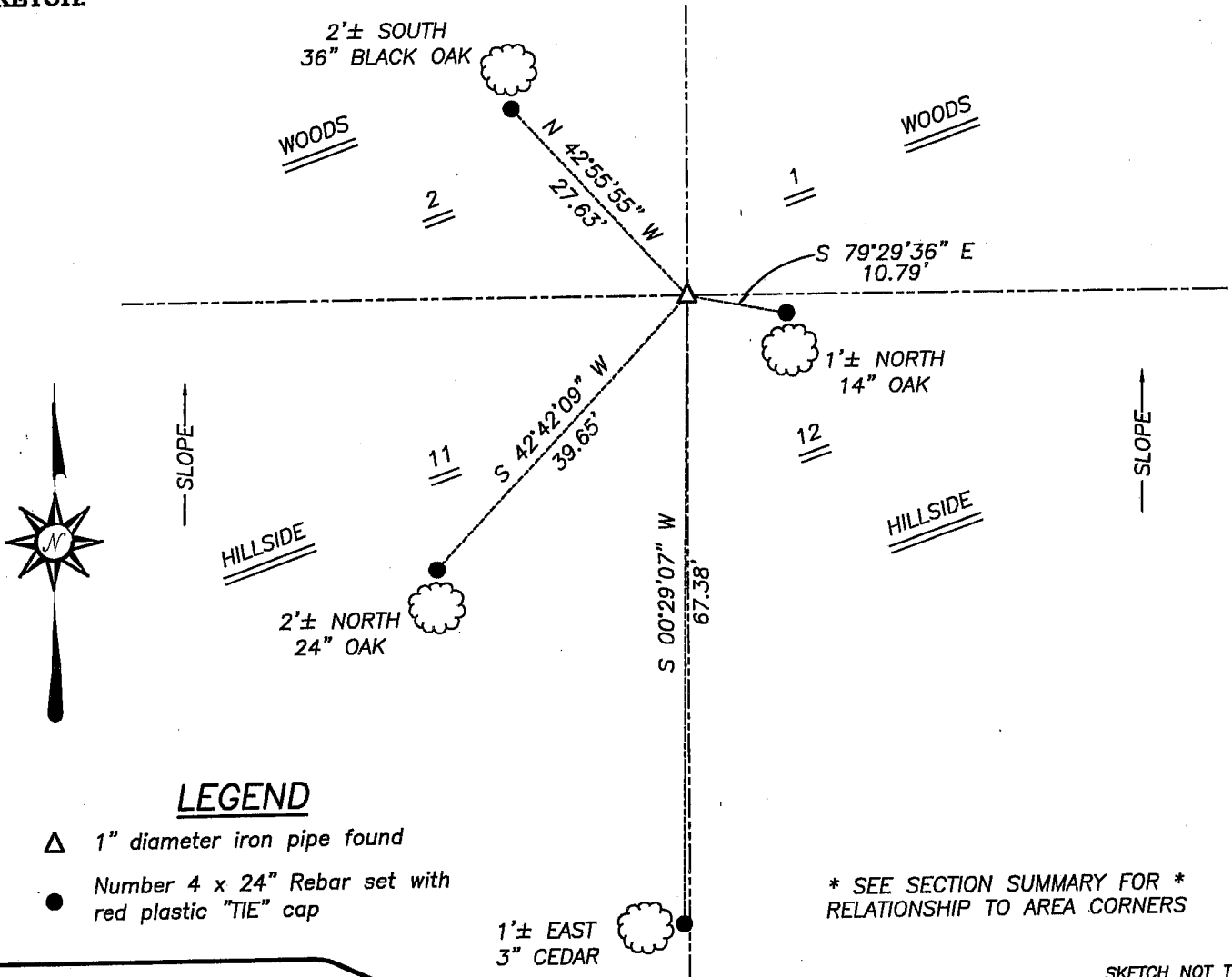
Corner was originally set in 1833 by Lyon. In 1974 Ralph showed the corner on a survey for Reidl with no mention of monument. No other record of the corner was found.

DESCRIPTION OF CORNER EVIDENCE FOUND

While retracing the Ralph survey I found a 1" iron pipe at the location shown by the Ralph survey. I accepted it's location after verification to many adjoining corners, occupied and monumented.

DESCRIPTION OF CORNER AND WITNESS MONUMENTS, references and accessories used to perpetuate the original or re-established location of this corner. Witnesses to corner location Brad Digman and Shelby Blindert

SKETCH:

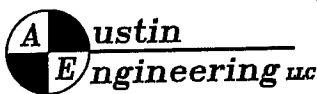


LEGEND

- △ 1" diameter iron pipe found
- Number 4 x 24" Rebar set with red plastic "TIE" cap

* SEE SECTION SUMMARY FOR *
 RELATIONSHIP TO AREA CORNERS

SKETCH NOT TO SCALE



4211 HWY 81 E, LANCASTER, WI 53813
 PHONE 608-723-6363 FAX 608-723-6702

JOB NUMBER 03S268
 FIELDBOOK: TSDR, 2327
 G:\T4NR5W\34
 H:\TIE\T3NR5W\23

DRAWN BY: C RUTTER
 APPROVED: LL AUSTIN