

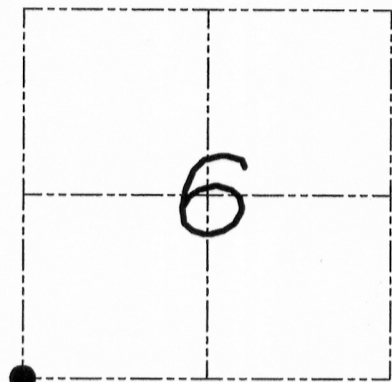
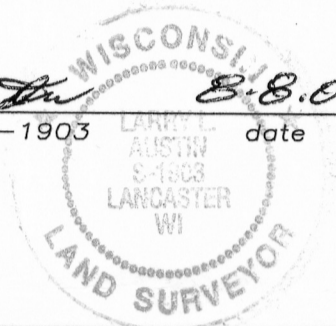
U.S. PUBLIC LAND SURVEY MONUMENT RECORD

Section 6, Town 3 North Range 4 West, Waterloo Township, Grant County, Wisconsin

CERTIFICATE

I, Larry L. Austin, do hereby certify that the corner location on this record was determined by me and/or under my direct supervision and that this U.S. public land survey monument record is correct and complete to the best of my knowledge and belief.

Larry L. Austin 8.8.08
 Larry L. Austin, S-1903 date



● = CORNER LOCATION

HISTORY OF CORNER

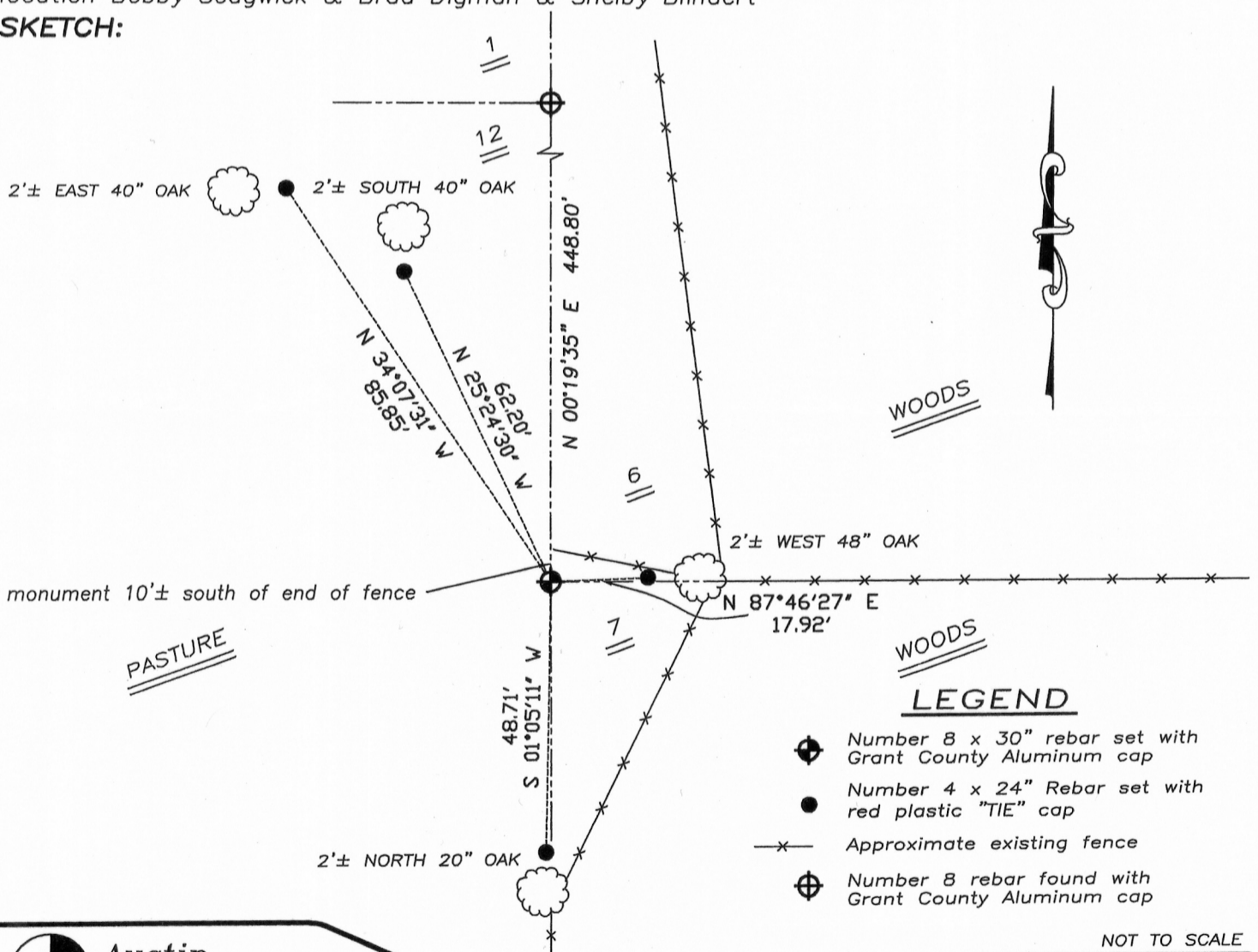
Corner was originally set in 1833 by Lyon. In 1859 Hayden found the original corner. No recent record of the corner was found.

CORNER EVIDENCE FOUND

I reset the corner at the projection of existing fences. Verified this location using EDM & GPS methods.

DESCRIPTION OF CORNER AND WITNESS MONUMENTS, references and accessories used to perpetuate the original or re-established location of this corner. Witnesses to monument location Bobby Sedgwick & Brad Digman & Shelby Blindert

SKETCH:



LEGEND

- ⊕ Number 8 x 30" rebar set with Grant County Aluminum cap
- Number 4 x 24" Rebar set with red plastic "TIE" cap
- x- Approximate existing fence
- ⊕ Number 8 rebar found with Grant County Aluminum cap

NOT TO SCALE



Austin Engineering LLC

4211 HWY 81 E, LANCASTER, WI 53813
 PHONE 608-723-6363 FAX 608-723-6702

JOB NUMBER 08S108
 FIELDBOOK: TDSR, 2710
 G:\T3NR4W\06BS
 H:\TIE\T3NR4W\33

DRAWN BY: BL STANFLEY
 APPROVED: LL AUSTIN

33

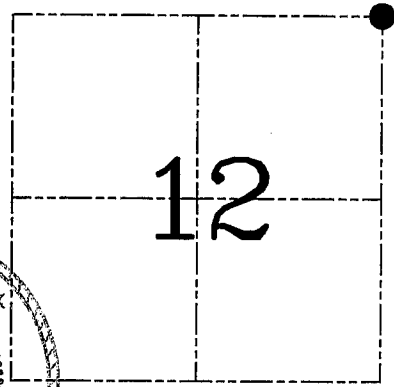
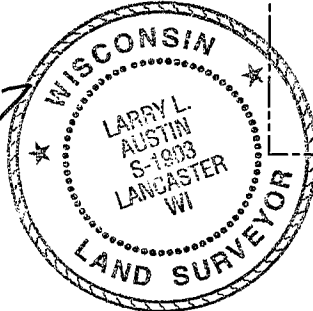
MAR 22 2011

U.S. PUBLIC LAND SURVEY MONUMENT RECORD – GRANT COUNTY, WI
Section 12, Town 3 North Range 5 West, Town of Cassville

CERTIFICATE

I, Larry L. Austin, do hereby certify that the corner location on this record was determined by me and/or under my direct supervision and that this U.S. public land survey monument record is correct and complete to the best of my knowledge and belief.

Larry L. Austin 2.24.07
 Larry L. Austin, S-1903 date



HISTORY OF CORNER ESTABLISHMENT

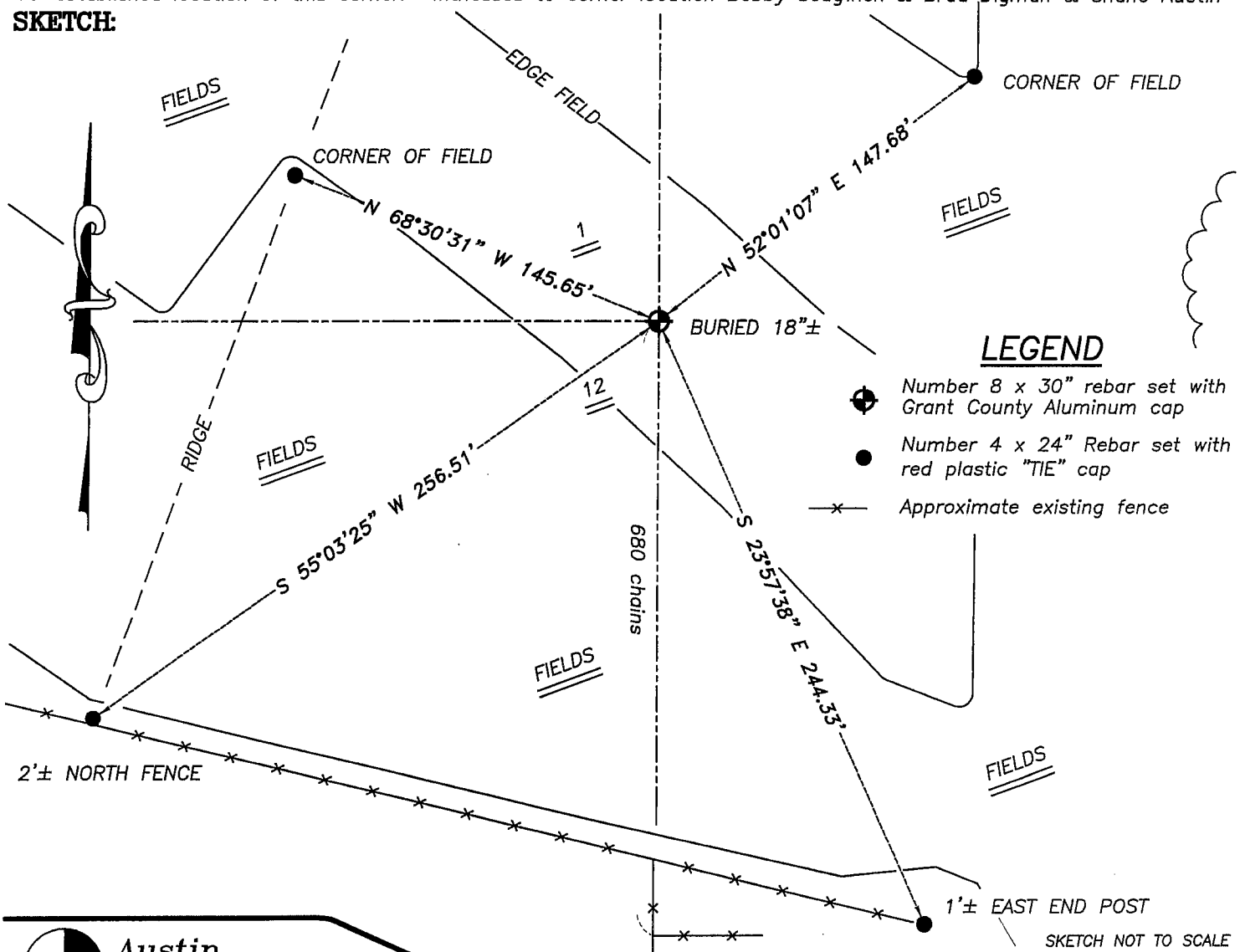
Corner was originally set in 1832 by Lyon. In 1853 Hayden tied to the corner. No other record of the corner was found.

DESCRIPTION OF CORNER EVIDENCE FOUND

I reset the corner at the recorded offset from the Southwest corner of Section 6, T3NR4W. Verified this location using EDM & GPS methods.

DESCRIPTION OF CORNER AND WITNESS MONUMENTS, references and accessories used to perpetuate the original or re-established location of this corner. Witnesses to corner location Bobby Sedgwick & Brad Digman & Shane Austin

SKETCH:



Austin Engineering LLC

4211 HWY 81 E, LANCASTER, WI 53813
 PHONE 608-723-6363 FAX 608-723-6702

JOB NUMBER 06S141
 FIELDBOOK: TDSR, 2603
 G:\T4NR5W\34
 H:\TIE\T3NR5W\21

DRAWN BY: SW AUSTIN
 APPROVED: LL AUSTIN