

U. S. PUBLIC LAND SURVEY MONUMENT RECORD

INSTRUCTIONS : This record shall show the location of the corner and shall include all of the following nine elements (a through i).

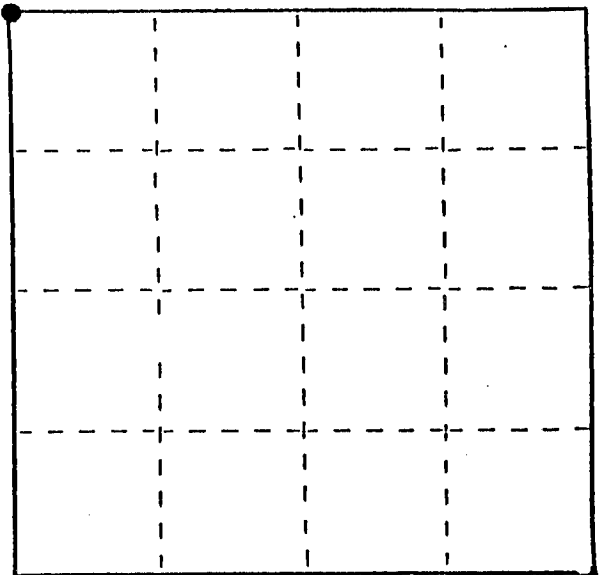
- (a) Identify the corner by reference to the U.S. public land survey system.
 ● = Corner monument restored.

NW Corner of Section 6

T 2 N R 3 W

Town of Potosi (South Part)

Grant Co., Wis.

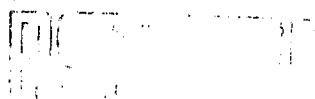


Section 6 T2N R3W
 (Corner to Townships 2N-3W, 2N-4W, 3N-3W, & 4N-4W)

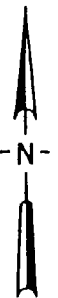
- (b) Describe any record evidence, monument evidence, occupational evidence, testimonial evidence or any other material evidence you considered, and whether the monument was found or placed. This Township corner was set originally by Lucius Lyon in the 1st 1/4 of 1833. A new tie was shown on a subdivision of Sec. 31-3-3 by George R. Stuntz, Co. Surveyor, in November, 1849. This tie, to a 24" White Oak, would be in an eroded lane leading from Sec. 1-2-4, diagonally into 31-3-3, therefore no evidence found. Local testimony puts the corner at the location shown, fence corner.

- (c) In the plan view drawing below, provide reference ties to at least 4 witness monuments, or, if the location is within a municipality, to at least 2 witness monuments. (Witness monuments shall be made of concrete, natural stone, iron or other equally durable material.) Describe witness monuments.

- (d) Show a plan view drawing depicting the relevant monuments and reference ties which is sufficient in detail to enable accurate relocation of the corner monument if the corner monument is disturbed. Indicate north.



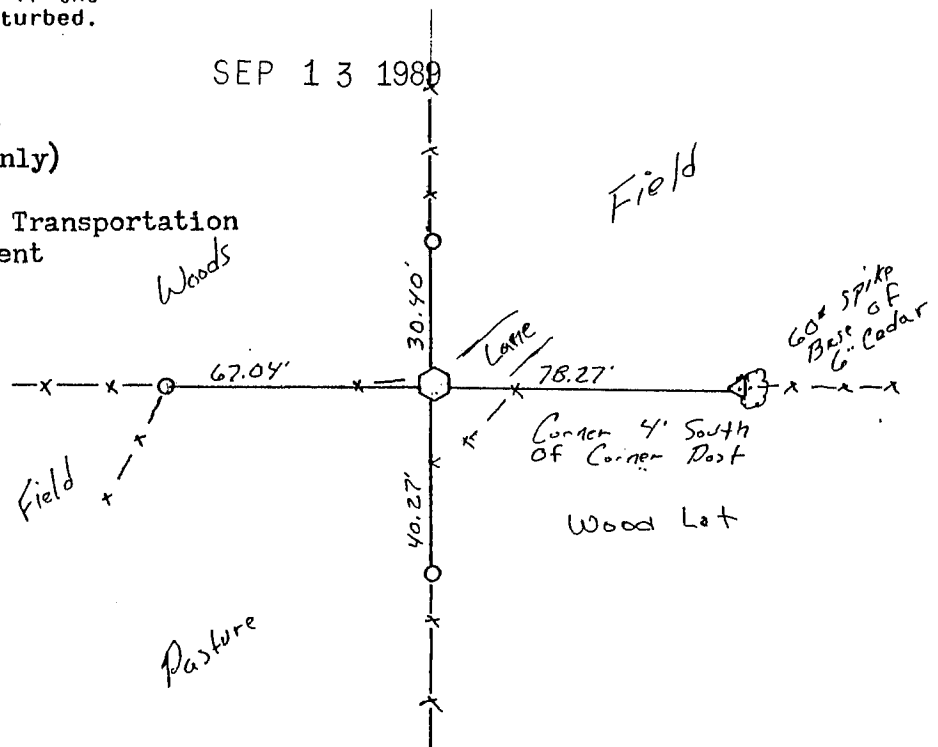
Scale: 1" = 40'



(Bearings shown are for orientation purposes only)

Corner is Wis. Dept. of Transportation
 2" X 30" aluminum monument
 with sign and post

○ 3/4" Rebar set

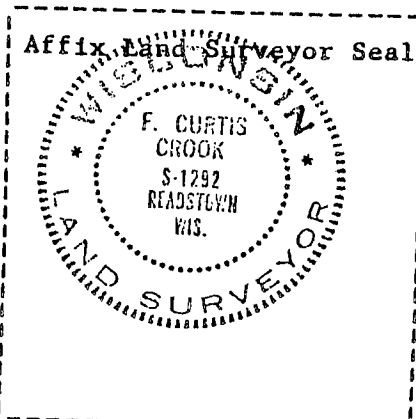


P. 13

(e) Describe any material discrepancy between the location of the corner as restored or reestablished and the location of that corner as previously restored or reestablished by distance and direction. Show the discrepancy on the plan view drawing under (d), above. Show the distances between the corner as previously restored or reestablished and (1) the corner as restored or reestablished, and (2) to at least 2 of the witness monuments shown on the drawing in (d), above.

(f) Was the corner restored through acceptance of (1) an obliterated evidence location, or, (2) a found perpetuated location?

(g&h) Was the corner reestablished through lost corner proportionate methods? If so, show the method, including the directions and distances to other public land survey corners used as evidence or used for proportioning in determining the corner location?



(1) I, F. Curtis Crook
(type or print name) certify that the corner location shown on this record was determined by me or under my direction and control and that this U.S. Public Land Survey Monument Record is correct and complete to the best of my knowledge and belief.

F. Curtis Crook 5-24-89