

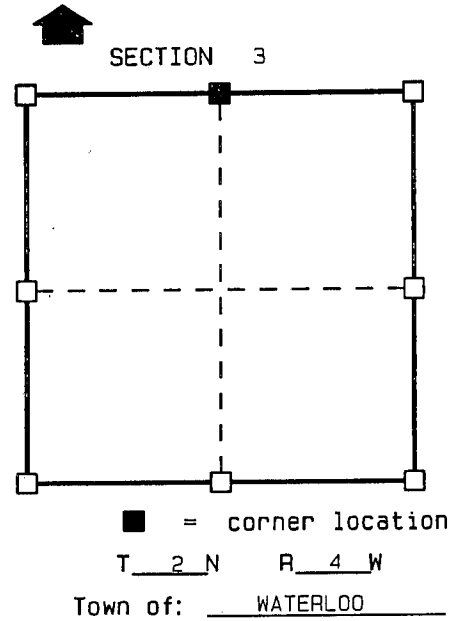
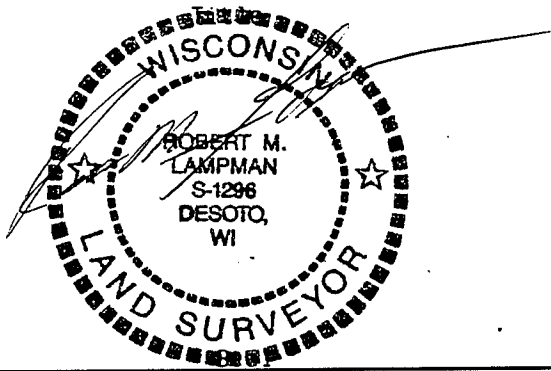
CERTIFIED LAND CORNER

STATE OF WISCONSIN )  
 COUNTY OF GRANT ) S.S.

CERTIFICATE

I, ROBERT M. LAMPMAN do hereby certify that on the 30th day of JANUARY 1998, I found (evidence) (~~no evidence~~) of the N 1/4 corner of SECTION 3, T2 N, R4 W, Fourth Principal Meridian, and I re-established said corner according to the Wisconsin Statutes as shown and described hereon.

Dated this 27th day of FEBRUARY 1998  
ROBERT M. LAMPMAN R.L.S. S-1296



History of original corner establishment:  
 ORIGINAL CORNER ESTABLISHED BY LUCIUS LYON IN 1832.

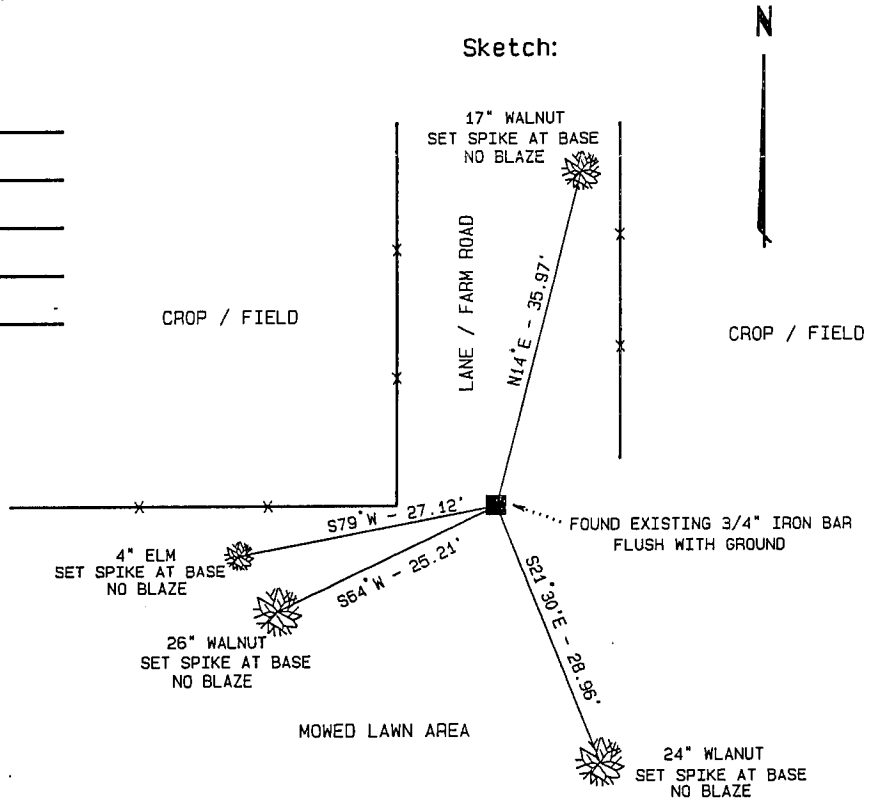
Description of corner evidence found:  
 PAUL C. BRADSHAW REFERS TO SETTING AN IRON ROD AT THE CORNER IN 1981. (C.S.M. NO. 186, ALSO C.S.M. NO. 194)  
 LARRY L. AUSTIN SHOWS 3/4" IRON REBAR FOUND AT CORNER IN 1997. (SURVEY PLAT)  
 FOUND 3/4" SOLID (ROUND) IRON BAR AT CORNER.  
 MEASURED 2653.94' FROM BUGGY AXLE AT NW CORNER. (RECORDED AS 2654.36' BY BRADSHAW & 2653.91' BY AUSTIN)

Description of corner and witness monuments, references and accessories used to perpetuate the original or re-established location of this corner:

Witnesses to corner location:

- ROBERT M. LAMPMAN
- JESSICA A. ZAMOR
- SHAWN R. TORGERSON
- JASON W. DOESECKLE

Sketch:



NOTES:  
 DRAWING NOT TO SCALE.  
 BEARINGS ARE MAGNETIC.

SURVEY CONTROL ORDER

Horizontal
Vertical

WISCONSIN COORDINATE SYSTEM

Corner	East (X)	North (Y)	Elevation (Z)	Zone
Control Sta. Name				