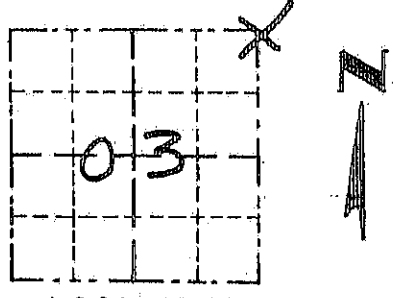


Survey Monument Record

TYPE OF MONUMENT 3/4" x 24" IRON BAR

CORNER NO. 05
 SECTION 03
 TOWN 2N
 RANGE 4W

FIELD BOOK: 97-01
 PAGE (9)



LOCATION
 (Indicated by "X")

BASIS FOR MONUMENT LOCATION

(Use reverse side if necessary)

Show info such as: History of corner, with reference to Vol. and pg., dates, surveyor; exact description of monument replaced; if location computed, by taped or EDM traverse; landowner, remarks, etc.

SEAL:

CORNER WAS SET IN 1833 BY LUCIUS LYON. IN 1855 BOOK B PAGE 390 THERE WAS A SURVEY DONE IN SECTION 34 T2N R4W. THE SURVEYOR TIED TO THE SOUTHWEST CORNER. IN 1883 J.C. SCOTT TIED TO THE CORNER. HOMER RALPH TIED TO THE CORNER NO MONUMENT PLACED. IN 1989 CURTIS CROOK LOCATED THE CORNER NO MONUMENT PLACED. I RESET THE CORNER BASED ON DISTANCES ON THE 1855 AND THE 1883 SURVEYS WHICH SEEM TO FIT VERY WELL EAST, WEST, NORTH OF THE CORNER, VERIFIED THIS LOCATION USING EDM METHODS.



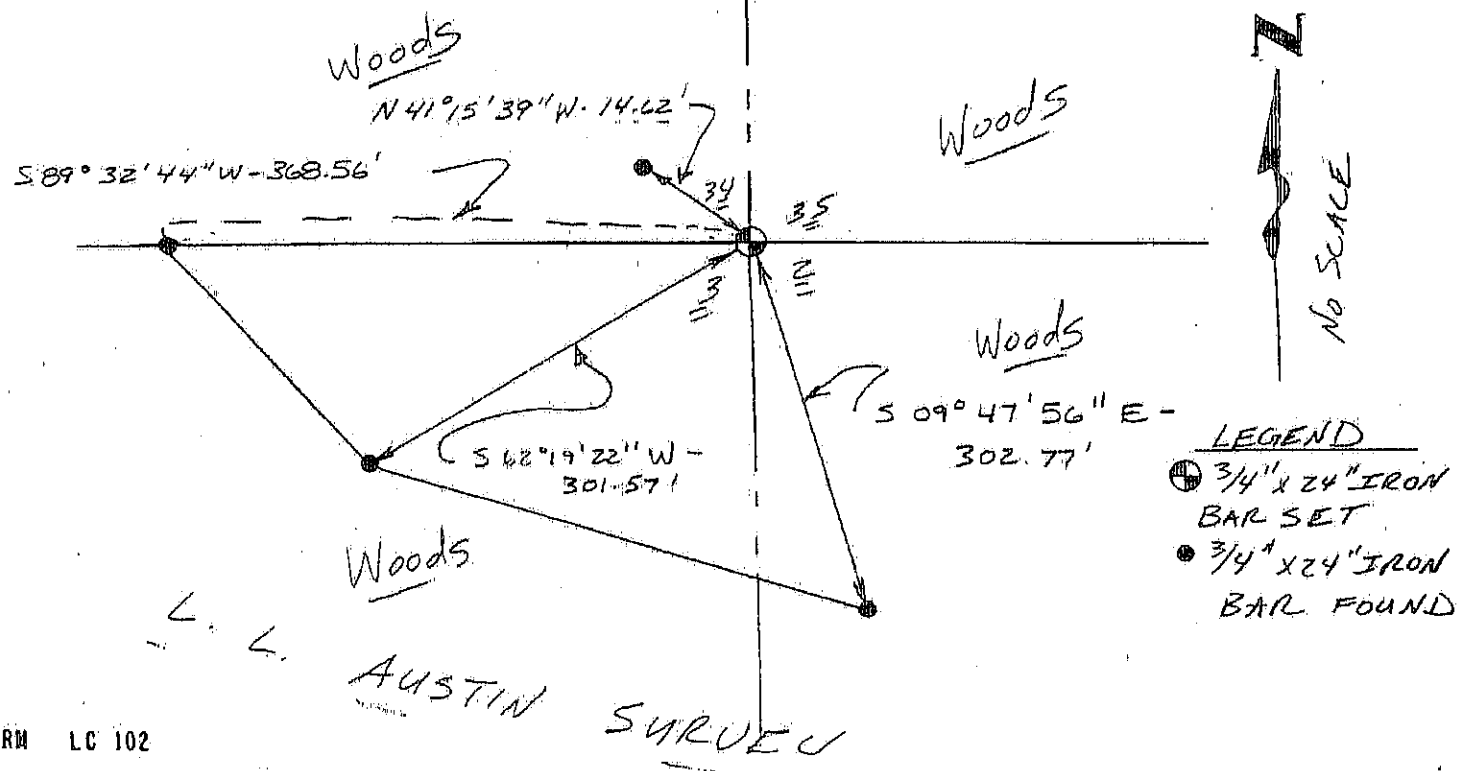
CERTIFIED CORRECT

Amy J. Rust
 Registered Land Surveyor

DATE: 1-8-98

TIE SKETCH

Show at least three (3) ties and monument



U. S. PUBLIC LAND SURVEY MONUMENT RECORD

INSTRUCTIONS :

This record shall show the location of the corner and shall include all of the following nine elements (a through i).

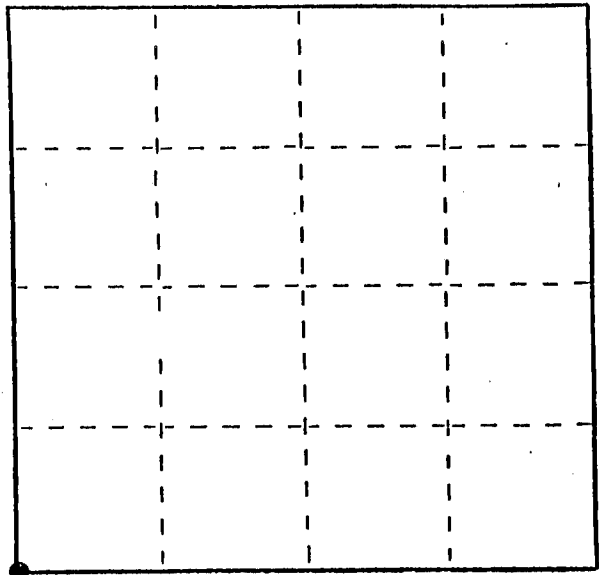
- (a) Identify the corner by reference to the U.S. public land survey system.
- = Corner monument restored.

SW Corner of Section 35

T 3 N R 4 W

Town of Waterloo

Grant Co., Wis.



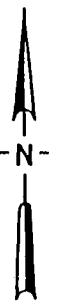
Section 35 T3N R4W

- (b) Describe any record evidence, monument evidence, occupational evidence, testimonial evidence or any other material evidence you considered, and whether the monument was found or placed. Originally set by Lucius Lyon in the 1st 1/4 of 1833. Found no record of re-surveys, or surveys showing this corner. Stationing (shown as scaled) on the railroad map, and scaling (scale 1"=100') on the Corps of Engineers (War Department) map would agree with the line of the fence on the West side of the Section. This fence runs from a point 2000'± north of the corner, South to a point on the top of the hill, 125' north of the corner, where it runs Southeasterly, along the power line. This then, was used as the E-W location. To determine the N-S location, this corner was coordinated with the location of the West 1/4 corner, using a line from the occupied center of Sec. 34, Easterly across the occupied 40 corner and along the line fence leading toward the West 1/4 corner of 35, then comparing this location to the location of this corner, placed at 60 rods record Southerly of a property line, the center of a former road, still visible. Very near 2640', so thus placed.
- (c) In the plan view drawing below, provide reference ties to at least 4 witness monuments, or, if the location is within a municipality, to at least 2 witness monuments. (Witness monuments shall be made of concrete, natural stone, iron or other equally durable material.) Describe witness monuments.

AFFIDAVIT

- (d) Show a plan view drawing depicting the relevant monuments and referent ties which is sufficient in detail to enable accurate relocation of the corner monument if the corner monument is disturbed. Indicate north.

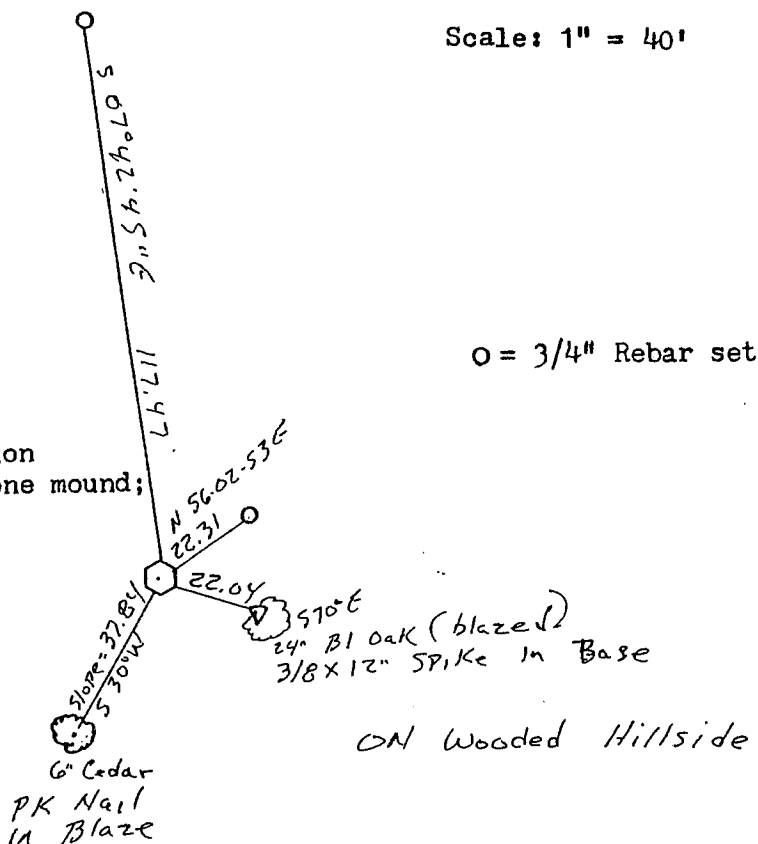
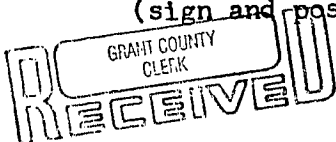
Scale: 1" = 40'



○ = 3/4" Rebar set

(Bearings shown are for orientation purposes only)

Corner is Wis. Dept. of Transportation
2" X 30" aluminum monument in 8" stone mound;
(sign and post set)



SEP 13 1989



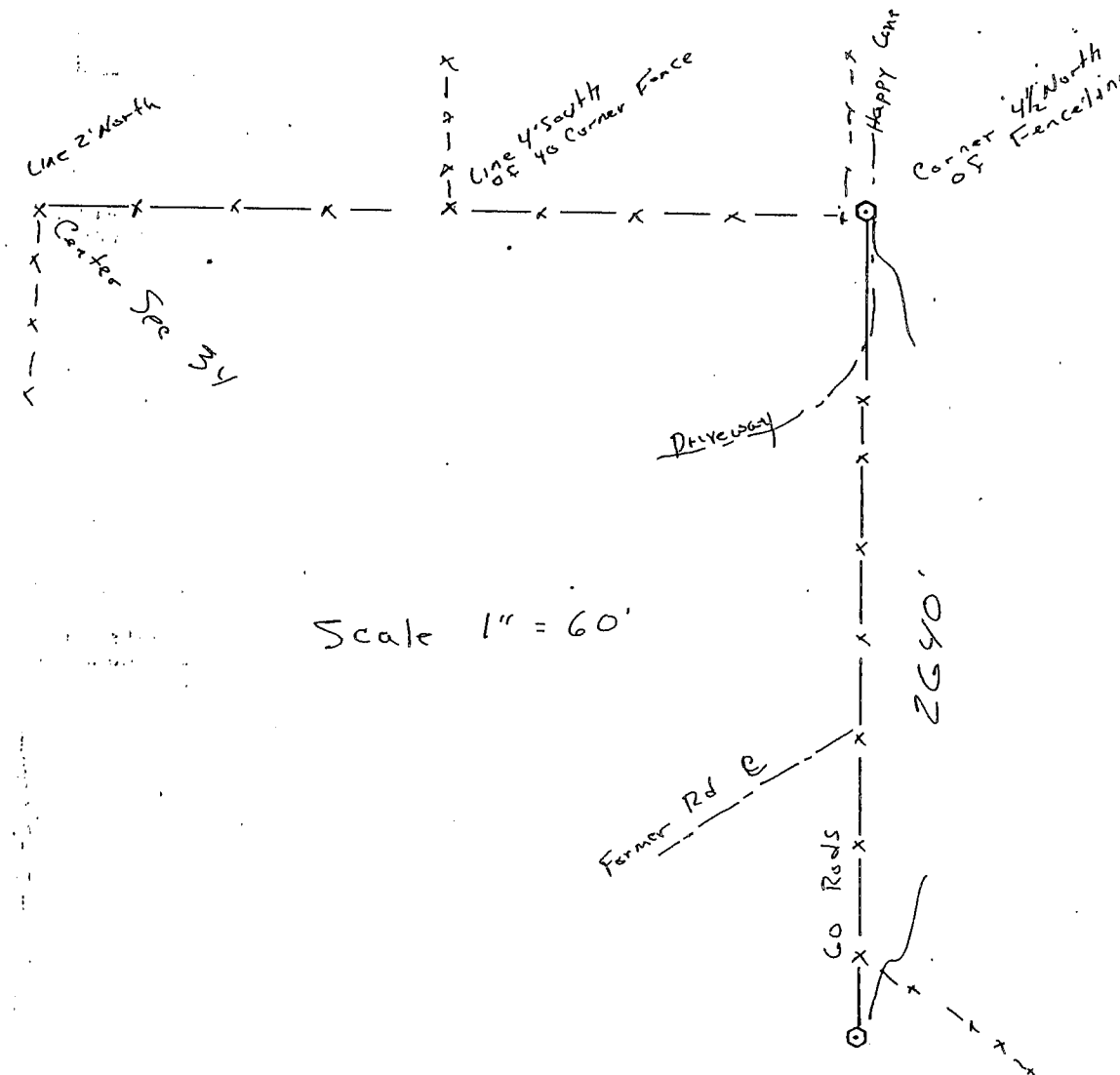
(e) Describe any material discrepancy between the location of the corner as restored or reestablished and the location of that corner as previously restored or reestablished by distance and direction. Show the discrepancy on the plan view drawing under (d), above. Show the distances between the corner as previously restored or reestablished and (1) the corner as restored or reestablished, and (2) to at least 2 of the witness monuments shown on the drawing in (d), above.

NONE

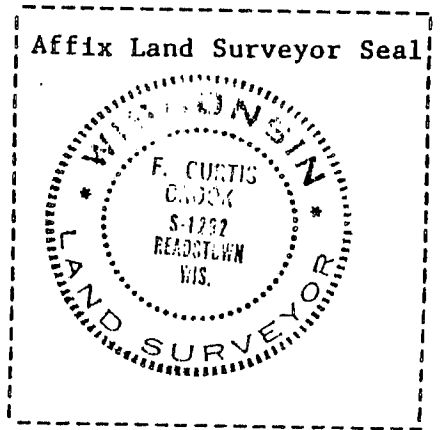
(f) Has the corner restored through acceptance of (1) an obliterated evidence location, or, (2) a found perpetuated location?

Obliterated corner evidence

(g&h) Was the corner reestablished through lost corner proportionate methods? If so, show the method, including the directions and distances to other public land survey corners used as evidence or used for proportioning in determining the corner location?



Scale 1" = 60'



(1) I, F. Curtis Crook (type or print name) certify that the corner location shown on this record was determined by me or under my direction and control and that this U.S. Public Land Survey Monument Record is correct and complete to the best of my knowledge and belief.

F. Curtis Crook S-25-89

F. CURTIS CROOK

RLS S-1292
CST 55 116

Registered Land Surveyor

Certified Soil Tester

R. R. 1

Box 68

Readstown, Wis. 54652

608-629-5151

608-629-5429

April 16, 1992

John Anderson,
Property Lister
Grant County, Wi.
Lancaster, Wi. 53813

APR 20 1992

Dear John;

Enclosed is an affidavit prepared for explaining the lack of a monument at the southwest corner of Section 35 T3N, R4W, Town of Waterloo. This is the northwest corner of the Blum property, as described, and the southwest corner of Grosser, as described. Would you please file this as you deem necessary; if you choose to record this at the Register of Deeds, please bill me. I am sending a copy to the County clerk (Dorothea).

Also, you may recall we found no record of any reference of an existing corner to the southeast corner of Section 19 T14N R4W of Beetown; having found no record, we did a considerable amount of research and field work to establish the corner as it was needed for the work along STH 81. The last day we were there, we shot in our location, and less than one foot away, we found a Grant County monument. I am somewhat puzzled, as I am sure no one else was surveying in the area at the time; has there been a recent recording of this? I was however, glad to accept the corner, as it was so near to the point I had determined, and with no better evidence other than sorting through a numerous amount of fence corners, rejecting some, and trying to make sense of the others, I was very pleased to see we (I, and the unknown surveyor) had come to the same conclusion.

Thank you again, if you have any questions please contact me.

Sincerely,

F. Curtis Crook

cc
Dorothea Eck County Clerk
Tim Diebels DOT
Pete Wood Strand & Assoc.

F. Curtis Crook
Surveyor

AFFIDAVIT

STATE OF WISCONSIN)
) SS.
County of Grant)

Re: The section corner location of Section 35, T3N, R4W, ^{APP} ~~Town of~~ ¹⁹⁹²
Waterloo, Grant County Wi.;

I, F. Curtis Crook, Registered Land Surveyor #S1292 hereby depose and say that:

1.) During the month of May, 1985, while engaged in a survey to mark the section corners along and near State Trunk Highway 133 in the Town of Waterloo, I placed a Bernsten survey monument with witness sign and reference ties to what I had determined to be the correct location of the southwest corner of Section 35, T3N, R4W.

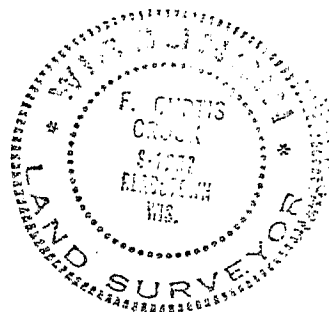
2.) During the month of December, 1991, I was notified by Strand and Associates, of Madison Wi., with whom I had a sub-contract for this job, that my location of this corner was being questioned by Ralph Blum, a son of an adjoining land owner, and former employee of the Department of Transportation. Mr. Blum contended the corner is approximately 120' South of the existing fence corner, which has marked the property boundaries for some time. Mr. Blum had then obtained the services of William Wambach, a registered land surveyor, formerly with the Department of Transportation, and now a consultant in the land surveying field, to check my location of this corner;

3.) During a March, 1992 meeting at the Department of Transportation office in Madison between William Wambach, Tim Diebels, of the Department, and myself, the following conclusions were drawn: I had used proper procedures in determining my location; this disagrees with an original topography call to a stream 363' (5.5 chains) to the South of this corner by 38', as determined by Mr. Wambach; the Bernsten monument has been removed, with the witnesses and sign being left intact; the issue of the exact location of this corner remains clouded by the topography call to the stream; the Department of Transportation has no descriptions of any parcels tied to this corner; I have no justification in pursuing this matter, as my need was for verification of the establishment of the pertaining corners, in which I feel are correct.

4.) I am filing this affadavit to explain the lack of a monument as called in the tie sheet previously filed; caution must be used in future surveying; the tie sheet should be used as reference only, regarding the methods used, and my interpretation, which was based partially on an old property tie of 60 rods to the North, is clouded by the above described stream reference. The conflicting local testimony also indicates more survey work must be considered.

F. Curtis Crook 4-16-92

F. Curtis Crook, R.L.S. #S-1292



Subscribed and sworn to before me on this 16th day of April, 1992

Thomas Fortney

Thomas Fortney
Notary Public, Vernon County, Wisconsin

My Commission expires 15 permanent