

# GRANT COL NTY

## Survey Monument Record

TYPE OF MONUMENT 2" IRON PIPE FOUND

STATE PLANE COORDINATES: N \_\_\_\_\_  
E \_\_\_\_\_

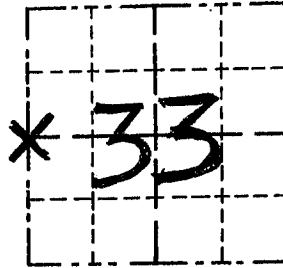
ELEVATION — M.S.L. DATUM: \_\_\_\_\_

THETA ANGLE: \_\_\_\_\_

FIELD BOOK: 9507

PAGE 7

CORNER NO. 116  
SECTION 33  
TOWN 3 N  
RANGE 4 W



LOCATION  
(Indicated by "X")

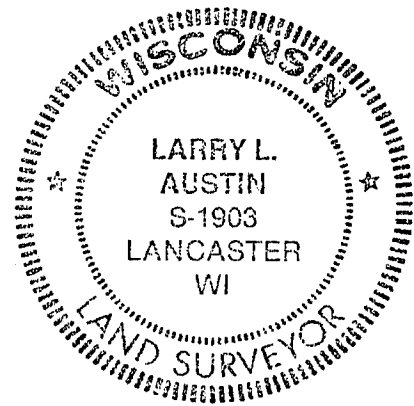
### BASIS FOR MONUMENT LOCATION

(Use reverse side if necessary)

Show info such as: History of corner, with reference to Vol. and pg., dates, surveyor; exact description of monument replaced; if location computed, by taped or EDM traverse; landowner, remarks, etc.

SEAL:

ORIGINAL CORNER SET BY  
LUCIUS LYON IN 1833;  
CORNER RE-ESTABLISHED BY  
BOWDEN IN 1980; I ACCEPTED  
THIS LOCATION AFTER VERI-  
FICATION BY EDM TRAVERSE



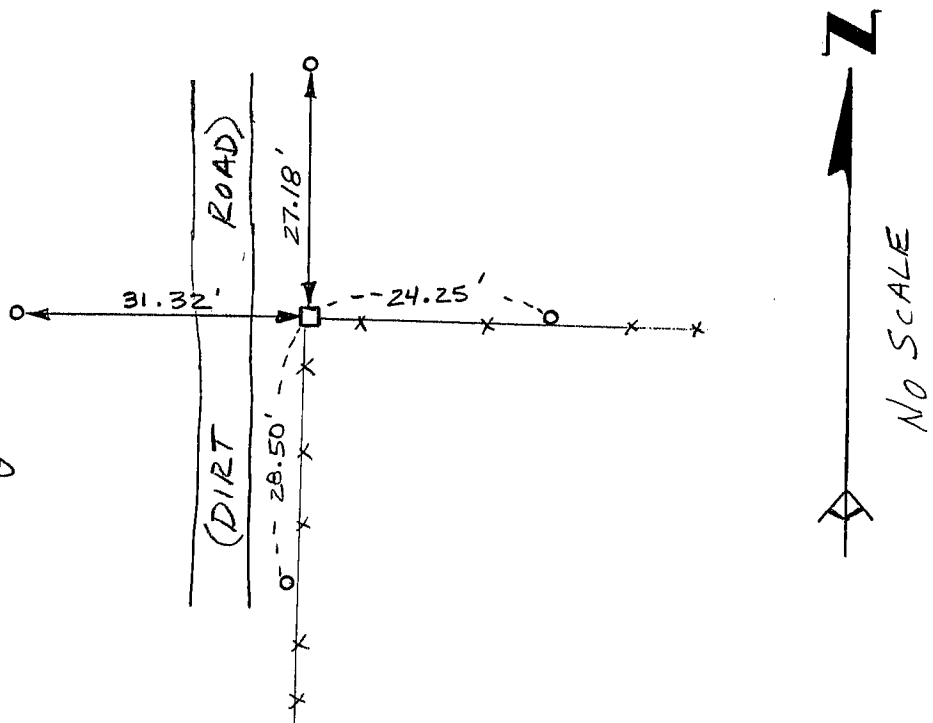
CERTIFIED CORRECT

*Larry L. Austin*  
Registered Land Surveyor

DATE: 3/22/94

### TIE SKETCH

Show at least three (3) ties and monument



#### LEGEND

- 2" IRON PIPE FOUND
- 1" x 12" (MIN. LENGTH)  
SET AS TIES
- \*\*\* EXISTING FENCE