

GRANT COUNTY CERTIFIED LAND CORNER

CORNER NUMBER 113

CERTIFICATE:

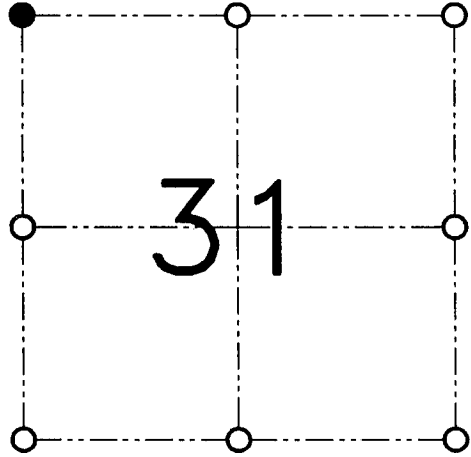
I, Larry L. Austin, do hereby certify that the corner location on this record was determined by me and/or under my direct supervision that this U.S. public land survey monument record is correct and complete to the best of my knowledge and belief.

Dated this 21st day of March, 2001

Larry L. Austin
Larry L. Austin, S-1903



SEAL



● = CORNER LOCATION

SECTION 31, T 3 N R 3 W
TOWN OF POTOSI

HISTORY OF ORIGINAL CORNER ESTABLISHMENT:

Corner was originally set in 1833 by Lucius Lyon. In 1997 Mike Larosa set a 1" Iron pipe but not at the exact location due to inaccessibility at the time of the survey.

DESCRIPTION OF CORNER EVIDENCE FOUND:

I found the 1" Iron pipe set by Larosa. I set the corner at the true location online between the Northeast and Southeast corners of Section 36 and at the recorded offset. Verified this location using EDM & GPS methods.

DESCRIPTION OF CORNER AND WITNESS MONUMENTS

references and accessories used to perpetuate the original or re-established location of this corner.

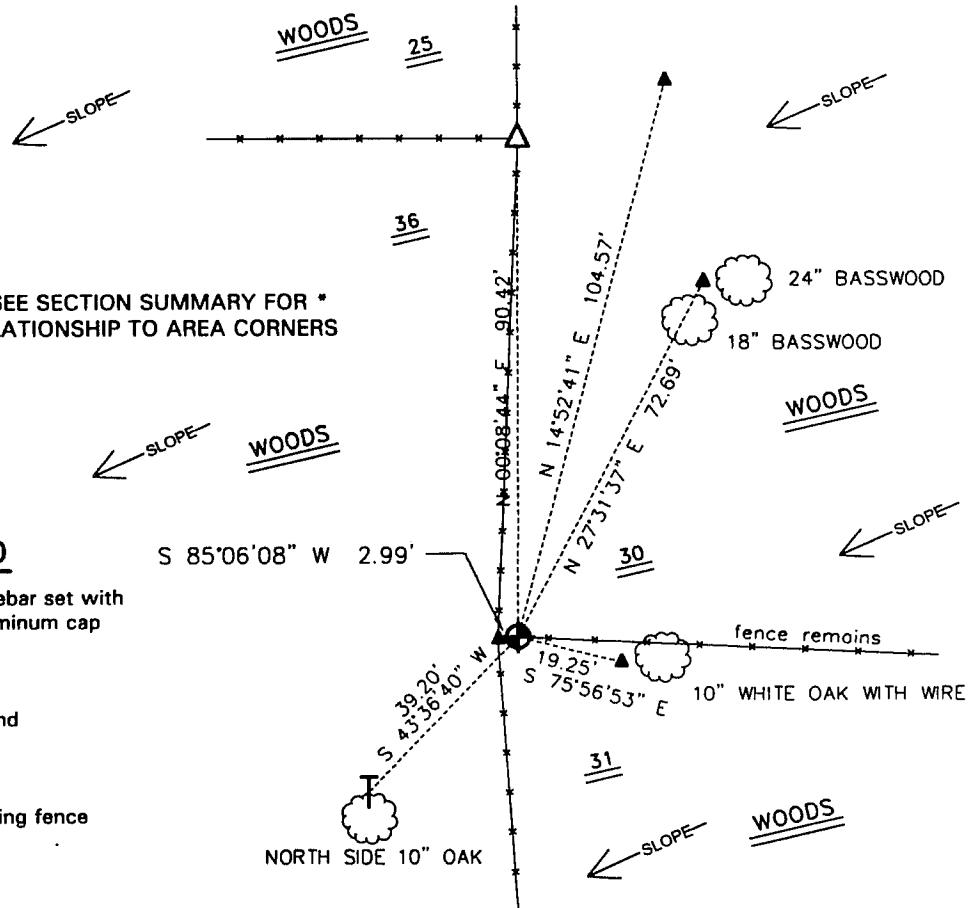
SKETCH:



* SEE SECTION SUMMARY FOR *
RELATIONSHIP TO AREA CORNERS

LEGEND

- Number 8 x 30" rebar set with Grant County Aluminum cap
- 1" Iron pipe found
- 1/2" Iron pipe found
- 60 penny nail set
- Approximate existing fence



Fax to JOHN ANDERSON 12/22/97

Survey Monument Record

NO MONUMENT @ SW OF 30-3-3
TYPE OF MONUMENT 1" IRON PIPE @ SE OF 25-3-4

STATE PLANE COORDINATES: N _____
E _____

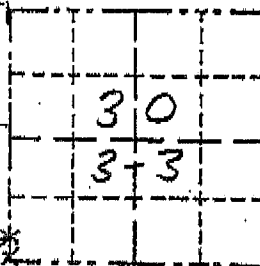
ELEVATION - M.S.L. DATUM: _____

THETA ANGLE: _____

FIELD BOOK: _____

PAGE _____

CORNER NO. _____
SECTION SW 30 SE 25
TOWN 3N 3N
RANGE 3W 4W



BASIS FOR MONUMENT LOCATION

(Use reverse side if necessary)

Show info such as: History of corner, with reference to Vol. and pg., dates, surveyor; exact description of monument replaced; if location computed, by taped or EDM traverse; landowner, remarks, etc.

- LOCATION (Indicated by "X")
- FOUND PERPETUATED LOCATION
 - OBSOLETE EVIDENCE LOCATION
 - LOST CORNER (RESTORED BY PROPORTIONATE METHODS)

Occupational evidence of a fence west and north was accepted as the SE corner of 25-3-4 and monumented with a 1" Iron Pipe. This location was noted in a survey by Celka in 1983. Corner was previously restored by Sampson in the 1890's. A reference pipe was placed on an old N-S fence in line with fence remnants in trees to the east. This location proved to be near the computed (restored) location of the SW corner of 30-3-3. This corner was not monumented due to seasonal conditions and inaccessibility at the time of survey "completion".

CERTIFIED CORRECT TO THE BEST OF MY KNOWLEDGE AND BELIEF

Mikhail R. Celka

Registered Land Surveyor

DATE: 12/22/1997

TIE SKETCH

Show at least (4) ties and monument

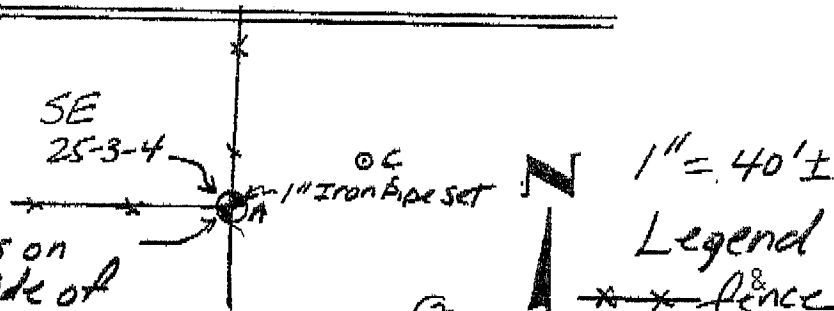
A-B S 0°54'55"W 90.42'

A-C N 69°26'22"E 28.63'

A-D S 51°08'27"E 41.88'

A-E S 10°11'46"E 96.85'

Pipe is on East side of

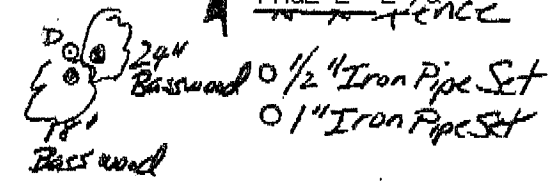


1" = 40' ±

Legend

--- fence

H-U S 51°08'21"E 41.88' Pipe is on
 A-E S 10°11'46"E 96.85' East side of
 A-F S 2°45'53"W 90.75' 24" Oak at corner
 B-C N 15°42'19"E 104.36'
 B-D N 27°58'16"E 72.61'
 B-E S 75°12'20"E 19.23'
 B-F S 85°28'13"W 2.94'
 (2.93' WEST & 0.23' SOUTH)



DOWNHILL
 ←



No monument
 Set

