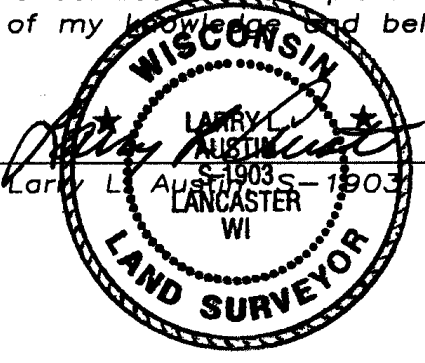


U.S. PUBLIC LAND SURVEY MONUMENT RECORD

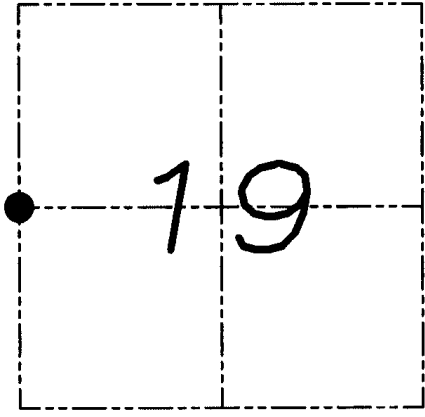
Section 19, Town 3 North Range 3 West, Town of Potosi, Grant County, Wisconsin

CERTIFICATE

I, Larry L. Austin, do hereby certify that the corner location on this record was determined by me and/or under my direct supervision and that this U.S. public land survey monument record is correct and complete to the best of my knowledge and belief.



9.08.08
date



● = CORNER LOCATION

HISTORY OF CORNER

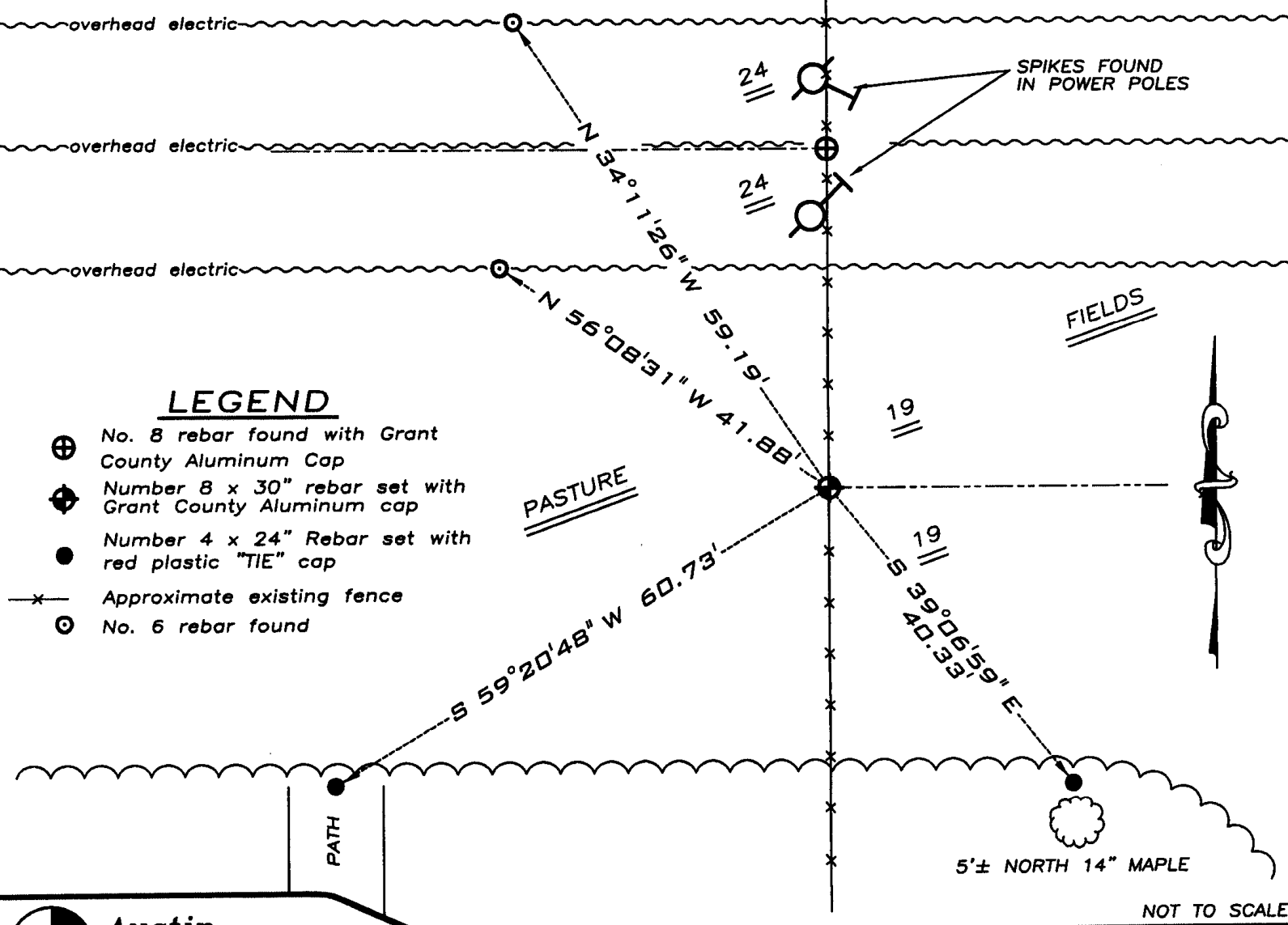
Corner was never originally set.
No recent record of the corner was found.

CORNER EVIDENCE FOUND

I set the corner at the proportioned offset from the East 1/4 of Section 24, T3N R4W. Verified this location using EDM & GPS methods.

DESCRIPTION OF CORNER AND WITNESS MONUMENTS, references and accessories used to perpetuate the original or re-established location of this corner. Witnesses to monument location Bobby Sedgwick & Brad Digman & Shane Austin

SKETCH:



LEGEND

- ⊕ No. 8 rebar found with Grant County Aluminum Cap
- ⊕ Number 8 x 30" rebar set with Grant County Aluminum cap
- Number 4 x 24" Rebar set with red plastic "TIE" cap
- x- Approximate existing fence
- ⊙ No. 6 rebar found



NOT TO SCALE

Austin Engineering LLC
4211 HWY 81 E, LANCASTER, WI 53813
PHONE 608-723-6363 FAX 608-723-6702

JOB NUMBER 08S151
FIELDBOOK: TDSR, 28-10
G:\T3NR3W\T3NR3W
H:\TIE\T3NR3W\74

DRAWN BY: SW AUSTIN
APPROVED: LL AUSTIN

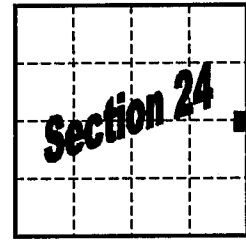
GRANT COUNTY

U.S. PUBLIC LAND SURVEY MONUMENT RECORD

Section Corner E ¼ Corner Sec 24 / East line T3N,R4W
 T 3 N, R 4 W Town of Waterloo

Type of monument Set ¾" x 30" Iron Bar w/ Grant County Aluminum Cap

Location indicated on sketch - ■



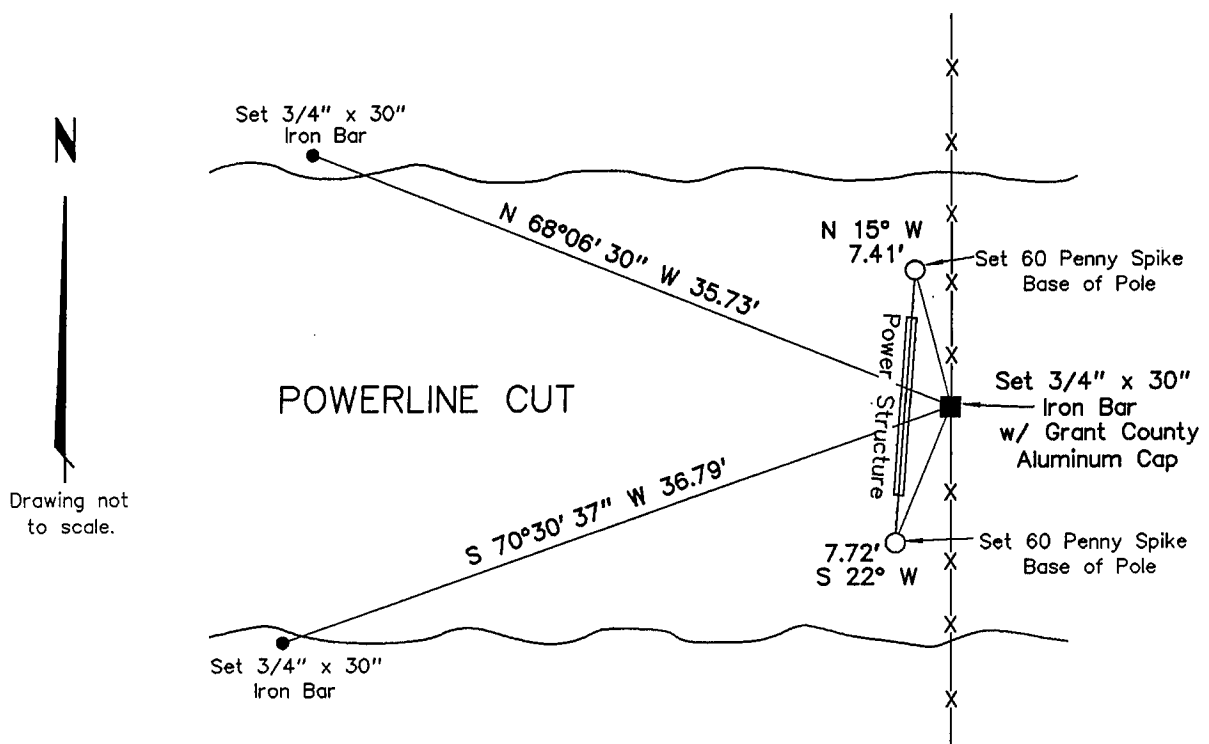
T 3 N, R 4 W

Describe and record evidence, monument evidence, occupational evidence, testimonial evidence or any other material evidence you considered, and whether the monument was found or placed.

Established corner at intersection of projection of occupation found along the East-West one-quarter line of Section 24 and North/South occupation at the corner area.

Grant County Coordinates (survey feet): N=476521.299 E=800189.004

Show a plan view drawing depicting the relevant monuments, providing reference ties to at least four witness monuments. Describe witness monuments. Show relationship to occupation.



Describe any material discrepancy between the location of the corner as restored or reestablished and the location of that corner as previously restored or reestablished by distance and direction. Show the discrepancy on the plan view drawing. Show the distances between the corner as restored or reestablished, and (1) the corner as previously restored or reestablished – and (2) to at least two of the witness monuments shown on the previous drawing.

N/A

Was the corner restored through acceptance of (1) an obliterated evidence location, (2) a found perpetuated location, or (3) an existent corner location.

(2) a found perpetuated location, as per occupation

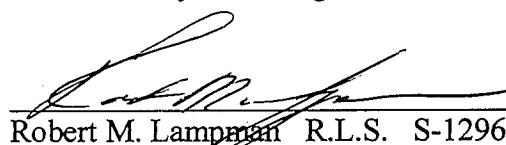
Was the corner reestablished through lost corner proportionate methods? If so, show the method including the directions to other public land survey corners used as evidence or used for proportioning in determining the corner location.

N/A

Show the history of record in chronological order from Original Government Survey to present.

(1) Original Government Survey – Lucuis Lyon - 1832

I, Robert M. Lampman, certify that the corner location shown on this record was determined by me or under my direction and control and that this U.S. Public Land Survey Monument Record is correct to the best of my knowledge and belief.


Robert M. Lampman R.L.S. S-1296
11-17-1999
Date

