

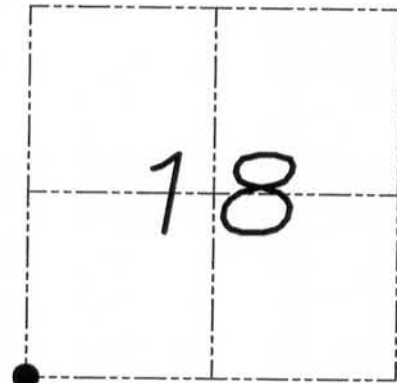
U.S. PUBLIC LAND SURVEY MONUMENT RECORD

Section 18, Town 3 North Range 3 West, Town of Potosi, Grant County, Wisconsin

CERTIFICATE

I, Larry L. Austin, do hereby certify that the corner location on this record was determined by me and/or under my direct supervision and that this U.S. public land survey monument record is correct and complete to the best of my knowledge and belief.

Larry L. Austin
Larry L. Austin, S-1903



● = CORNER LOCATION

HISTORY OF CORNER

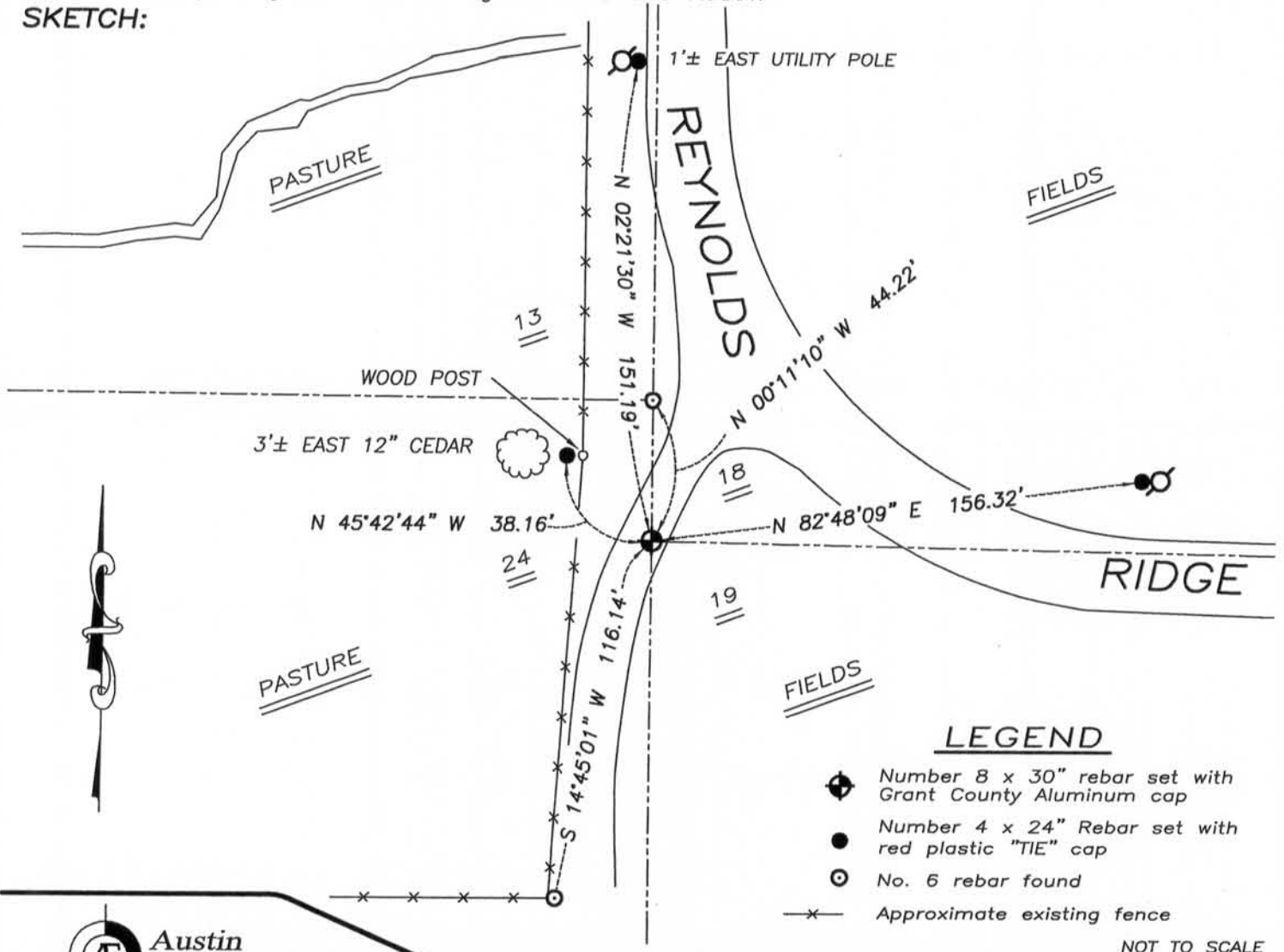
Corner was originally set in 1832 by Robert Clark. No other record of the corner was found.

CORNER EVIDENCE FOUND

I set the corner at the recorded offset from the Southeast Corner of Section 13, T3N R4W. Verified this location using EDM & GPS methods.

DESCRIPTION OF CORNER AND WITNESS MONUMENTS, references and accessories used to perpetuate the original or re-established location of this corner. Witnesses to monument location Bobby Sedgwick & Brad Digman & Shane Austin

SKETCH:



LEGEND

- ⊕ Number 8 x 30" rebar set with Grant County Aluminum cap
- Number 4 x 24" Rebar set with red plastic "TIE" cap
- No. 6 rebar found
- x- Approximate existing fence

NOT TO SCALE

Austin Engineering LLC
austinengineeringllc.com
4211 HWY 81 E, LANCASTER, WI 53813
PHONE: 608-723-6363 FAX: 608-723-6702

JOB NUMBER 07S114-EDGE
FIELDBOOK: TDSR, 10-01
G:\T3NR3W\T3NR3W
H:\TIE\T3NR3W\73

DRAWN BY: SW AUSTIN
APPROVED: AJ AUSTIN

73

MAR 09 2011

Survey Monument Record

TYPE OF MONUMENT 3/4" X 24" IRON

BAR SET

CORNER NO. 61
 SECTION 13
 TOWN 3N
 RANGE 16W

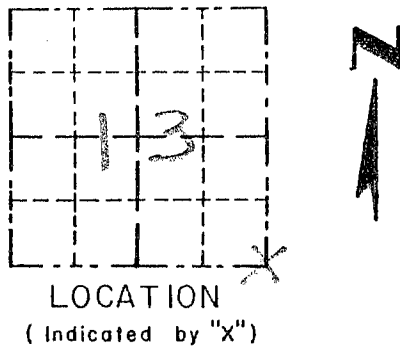
FIELD BOOK: 97.22
 PAGE _____

BASIS FOR MONUMENT LOCATION

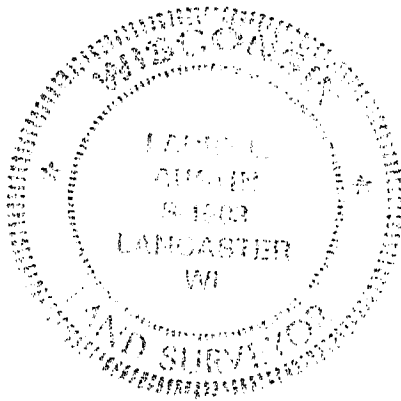
(Use reverse side if necessary)

Show info such as: History of corner, with reference to Vol. and pg, dates, surveyor; exact description of monument replaced; if location computed, by taped or EDM traverse; landowner, remarks, etc.

CORNER SET IN 1832 BY L. LYON. NO RECORD OF CORNER FOUND SINCE ORIGINAL SURVEY; I ACCEPTED A FENCE SOUTH FOR EASTING, NORTHING WAS BASED ON PROJECTION OF A FENCE ON THE SOUTH LINE OF THE SW 1/4 OF THE SE 1/4 OF SECTION 13. VERIFIED THIS LOCATION USING EDM METHODS.



SEAL:



CERTIFIED CORRECT

LanceLOT Austin
 Registered Land Surveyor

DATE: 1-12-98

TIE SKETCH

Show at least three (3) ties and monument

LEGEND

● 3/4" X 24" IRON BAR SET

● 3/4" X 24" IRON BAR FOUND

XX EXISTING FENCE

