

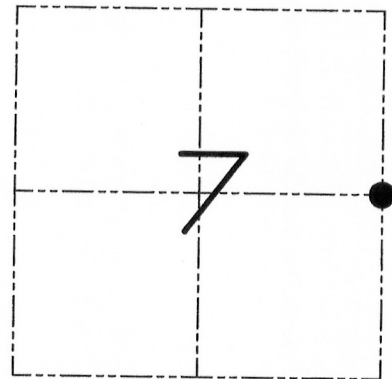
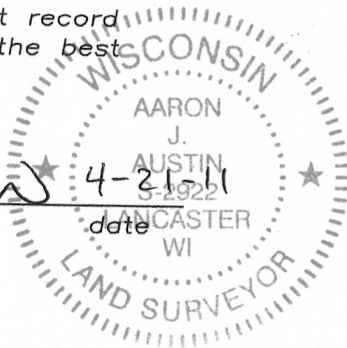
U.S. PUBLIC LAND SURVEY MONUMENT RECORD

Section 7, Town 3 North Range 4 West, Town of Waterloo, Grant County, Wisconsin

CERTIFICATE

I, Aaron J. Austin, do hereby certify that the corner location on this record was determined by me and/or under my direct supervision and that this U.S. public land survey monument record is correct and complete to the best of my knowledge and belief.

Aaron J. Austin
 Aaron J. Austin, S-2922



● = CORNER LOCATION

HISTORY OF CORNER

Corner was originally set in 1833 by Lyon.
 No other record of the corner was found.

CORNER EVIDENCE FOUND

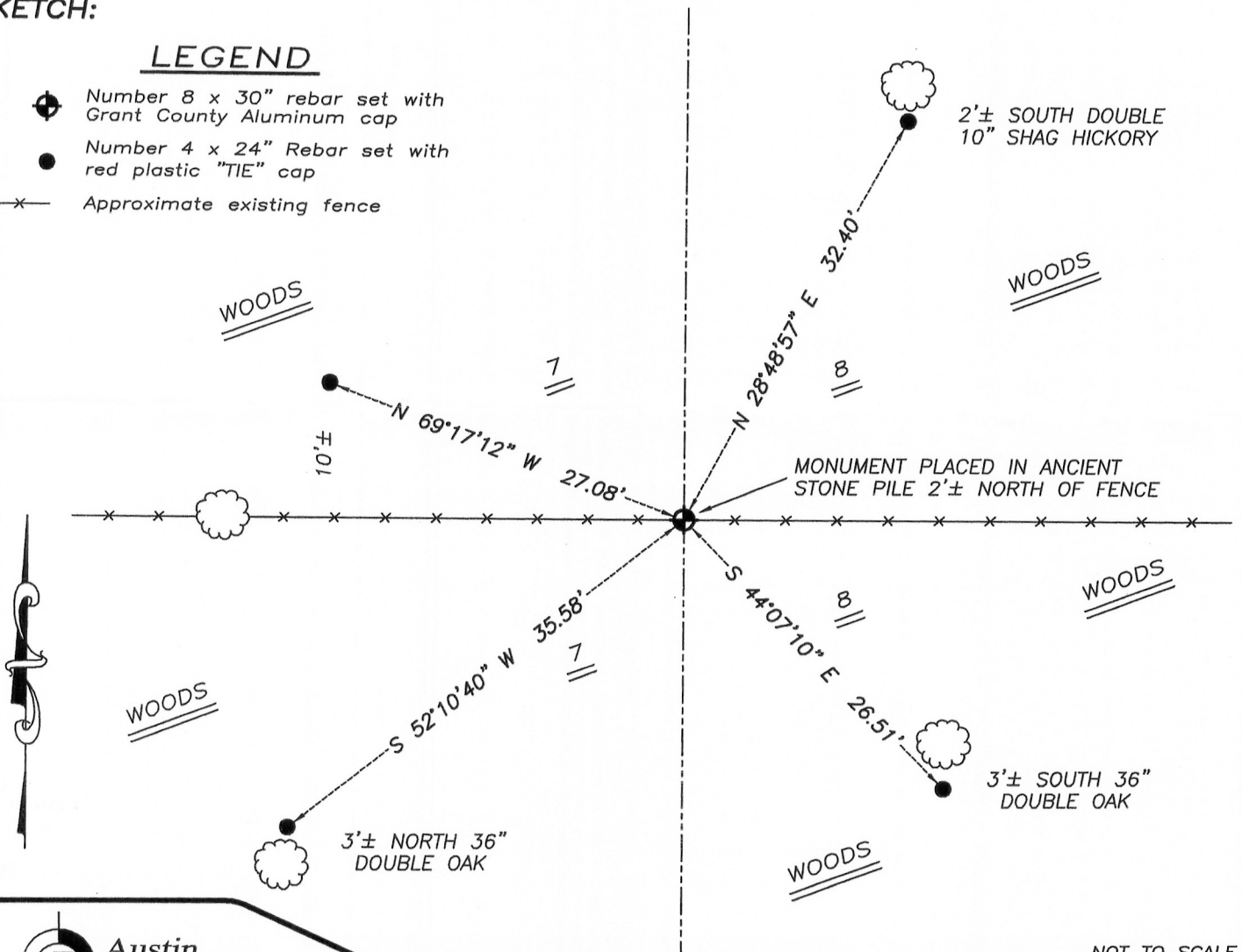
Richard Esser, a local landowner stated that this stone pile existed when his father was a child. I accepted it's location after an EDM & GPS traverse of the area.

DESCRIPTION OF CORNER AND WITNESS MONUMENTS, references and accessories used to perpetuate the original or re-established location of this corner. Witnesses to monument location Bobby Sedgwick & Shane Austin & Shelby Blindert

SKETCH:

LEGEND

- Number 8 x 30" rebar set with Grant County Aluminum cap
- Number 4 x 24" Rebar set with red plastic "TIE" cap
- x— Approximate existing fence



NOT TO SCALE

Austin Engineering LLC
 austinengineeringllc.com
 4211 HWY 81 E, LANCASTER, WI 53813
 PHONE: 608-723-6363 FAX: 608-723-6702

JOB NUMBER 11S040-ESSER
 FIELDBOOK: TDSR, 1005
 G:\T4NR5W\34
 H:\TIE\T3NR4W\35

DRAWN BY: SW AUSTIN
 APPROVED: AJ AUSTIN