

GRANT COUNTY CERTIFIED LAND CORNER

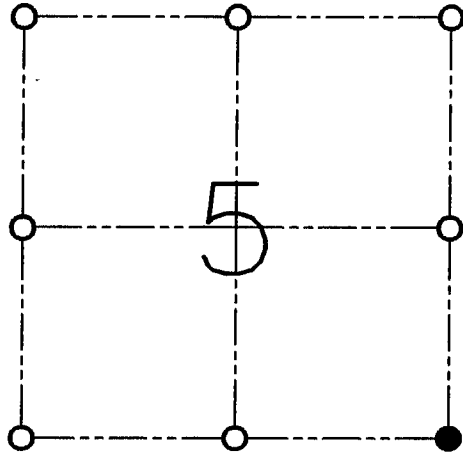
CORNER NO. 29

CERTIFICATE:

I, LARRY L. AUSTIN, DO HEREBY CERTIFY THAT ON TWENTY-SEVENTH DAY OF AUGUST, 1998, I FOUND MONUMENTED EVIDENCE OF THE SOUTHEAST CORNER SECTION 5, TOWN 3 NORTH, RANGE 4 WEST, OF THE FOURTH PRINCIPAL MERIDIAN, AND I RE-ESTABLISHED SAID CORNER ACCORDING TO THE WISCONSIN STATUTES AS SHOWN AND DESCRIBED HEREON.

DATED THIS TWENTY-SEVENTH DAY OF SEPTEMBER, 1998

Larry L. Austin
LARRY L. AUSTIN S-1903



● = CORNER LOCATION

**SOUTHEAST CORNER
SECTION 5, T 3 N R 4 W
TOWN OF WATERLOO**

HISTORY OF ORIGINAL CORNER ESTABLISHMENT:

CORNER WAS SET IN 1833 BY LUCIUS LYON.

DESCRIPTION OF CORNER EVIDENCE FOUND:

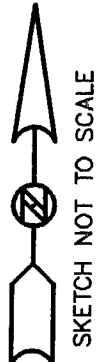
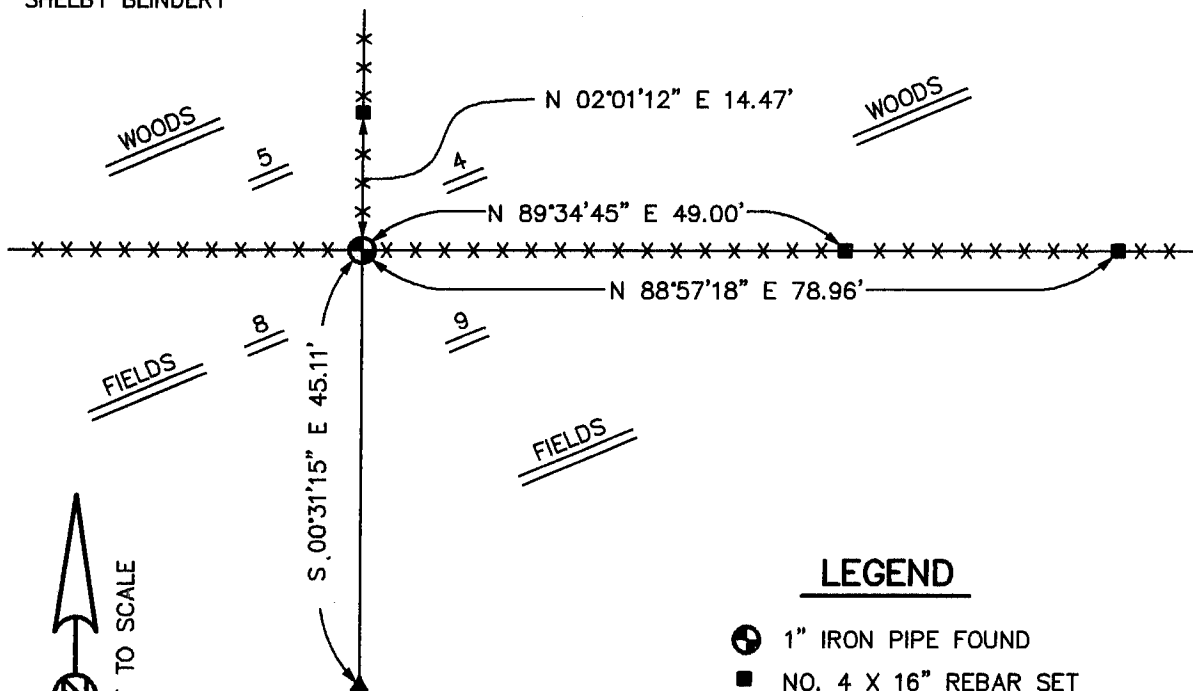
I FOUND A 1" IRON PIPE AT AN OCCUPIED FENCE CORNER. THIS LOCATION FIT WELL WITH CORNERS IN THE AREA. VERIFIED THIS LOCATION USING E.D.M. AND G.P.S. METHODS.

DESCRIPTION OF CORNER AND WITNESS MONUMENTS, REFERENCES AND ACCESSORIES USED TO PERPETUATE THE ORIGINAL OR RE-ESTABLISHED LOCATION OF THIS CORNER:

WITNESS TO THE CORNER LOCATION:

BOBBY SEDGWICK
SHELBY BLINDERT

SKETCH:



- LEGEND**
- ⊕ 1" IRON PIPE FOUND
 - NO. 4 X 16" REBAR SET
 - ×× EXISTING FENCE