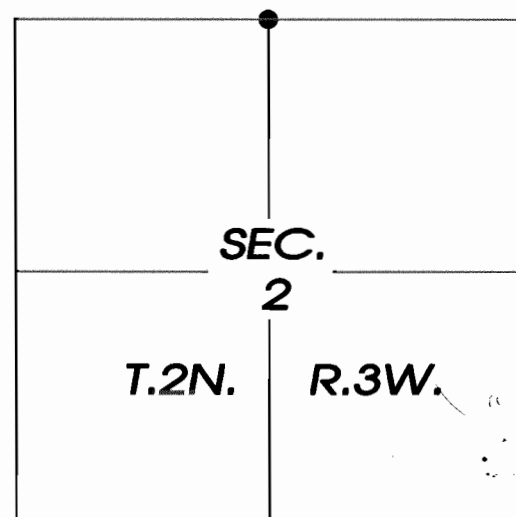


**U.S. PUBLIC LAND SURVEY MONUMENT RECORD - GRANT COUNTY, WI.**

I, RONALD J. COMBS, DO HEREBY CERTIFY THAT THE CORNER LOCATION ON THIS RECORD WAS DETERMINED UNDER MY DIRECT SUPERVISION AND THAT THIS U.S. PUBLIC LAND SURVEY MONUMENT RECORD IS CORRECT TO THE BEST OF MY KNOWLEDGE AND BELIEF.

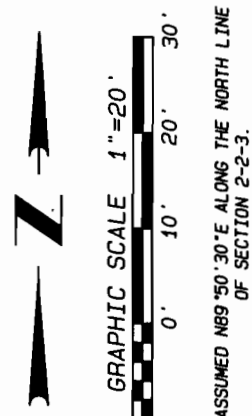
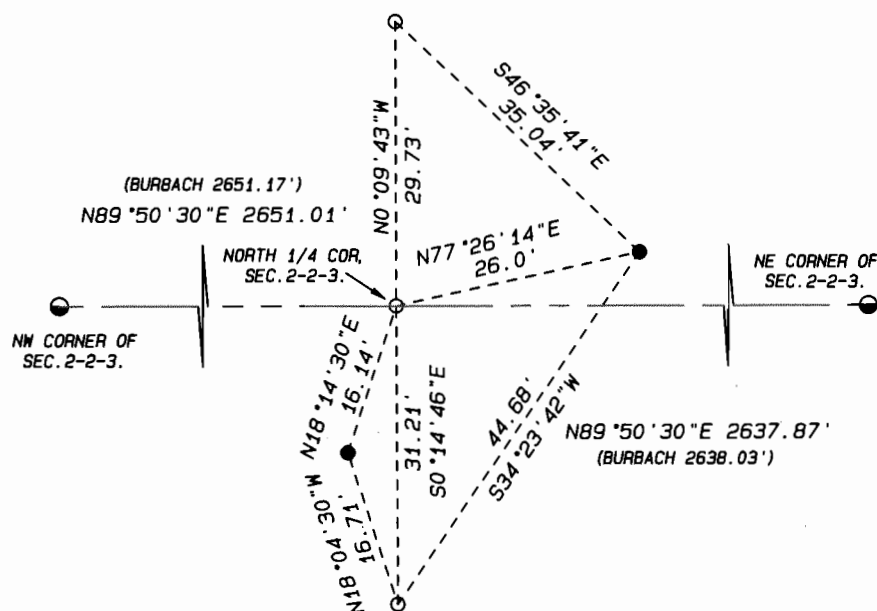
DATED THIS 21ST DAY OF DECEMBER, 2010.

*Ronald J. Combs*  
 RONALD J. COMBS, RLS No. 1330



● = CORNER MONUMENT RESTORED.

DAVID BURBACH SET A BERNSTEIN MONUMENT ON A STRAIGHT LINE BETWEEN SW CORNER AND SE CORNER OF SECTION AND AT THE INTERSECTION OF AN ANCIENT NORTH-SOUTH FENCE. I DID NOT FIND THIS MONUMENT. I SET A 3/4" x 24" ROUND IRON PIN ON SAID STRAIGHT LINE AND AT PROPORTIONATE DISTANCES FROM SAID CORNERS. I SET 2 ADDITIONAL REFERENCE MONUMENTS.



**LEGEND:**

- SET IRON PIN, 3/4" x 24", 1.5 LBS./LIN.FT.
- FOUND IRON PIN
- FOUND D.O.T. MONUMENT

DATE: DECEMBER 21, 2010



- LAND SURVEYING
- LAND PLANNING
- CIVIL ENGINEERING

109 W. Milwaukee St.  
 Janesville, WI 53548  
 www.combsurvey.com

tel: 608 752-0575  
 fax: 608 752-0534

# U.S. PUBLIC LAND SURVEY MONUMENT RECORD

THIS RECORD SHALL SHOW THE LOCATION OF THE CORNER AND SHALL INCLUDE ALL OF THE FOLLOWING NINE ELEMENTS (A THROUGH I).

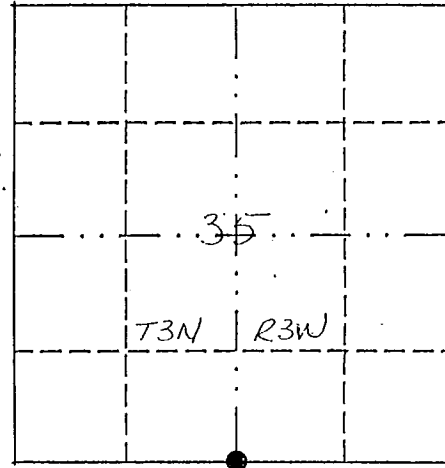
(a) Identify the corner by reference to the U.S. public land survey system.

South 1/4 Corner Section 35

T3N - R3W

Town of Potosi

Grant County, Wisconsin



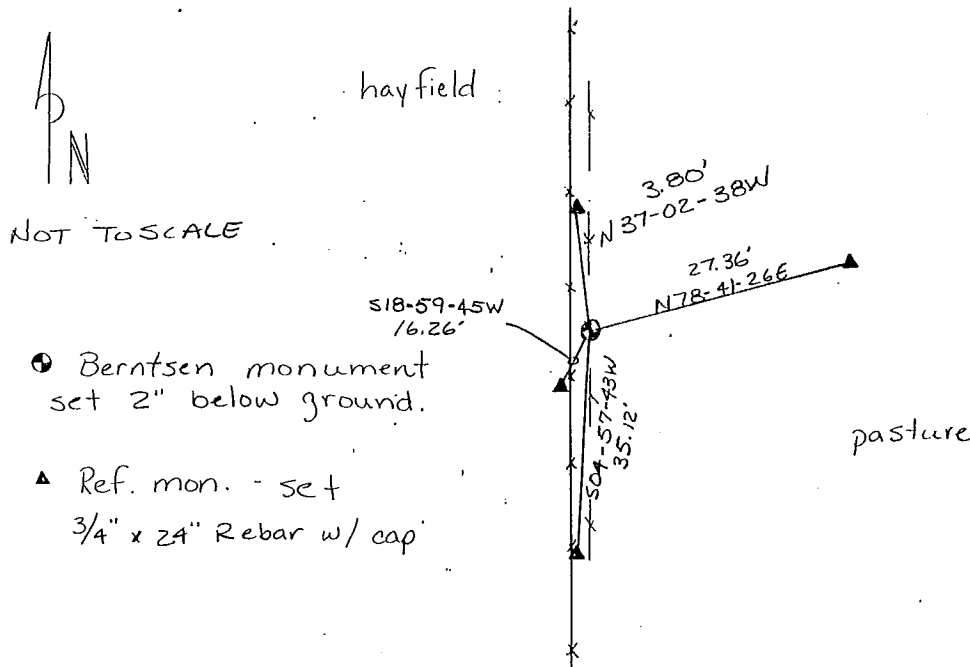
● = corner monument restored.

(b) Describe any record evidence, monument evidence, occupational evidence, testimonial evidence or any other material evidence you considered, and whether the monument was found or placed.

Monument set by intersecting south line of section 35 with an ancient fence line. Found by EDM traverse.

(c) In the plan view drawing below, provide reference ties to at least four witness monuments, or, if the location is within a municipality, to at least two witness monuments. (Witness monuments shall be made of concrete, natural stone, iron or other equally durable material.) Describe witness monuments.

(d) Show a plan view drawing depicting the relevant monuments and reference ties which is sufficient in detail to enable accurate relocation of the corner monument if the corner monument is disturbed. Indicate north.

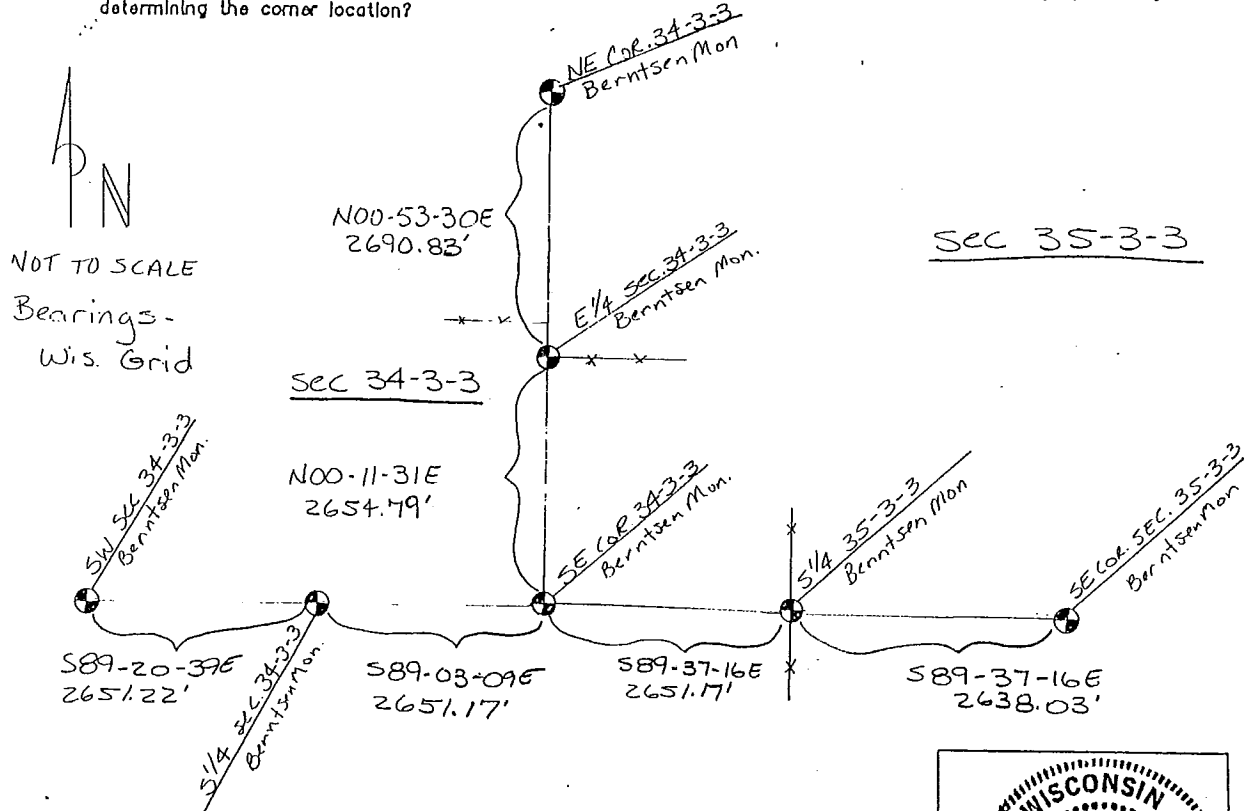


~~124~~

(e) Describe any material discrepancy between the location of the corner as restored or reestablished and the location of that corner as previously restored or reestablished by distance and direction. Show the discrepancy on the plan view drawing under (d), above. Show the distances between the corner as previously restored or reestablished and (1) the corner as restored or reestablished, and (2) to at least two of the witness monuments shown on the drawing in (d), above.

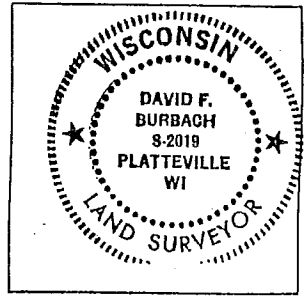
(f) Was the corner restored through acceptance of (1) an obliterated evidence location, or (2) a found perpetuated location?

(g) & (h) Was the corner reestablished through lost corner proportionate methods? If so, show the method, including the directions and distances to other public land survey corners used as evidence or used for proportioning in determining the corner location?



(i) I, DAVID F. BURBACH  
(type or print name) certify that the corner location shown on this record was determined by me or under my direction and control and that this U.S. Public Land Survey Monument Record is correct and complete to the best of my knowledge and belief.

David F. Burbach  
Signature Date



offx land surveyor seal