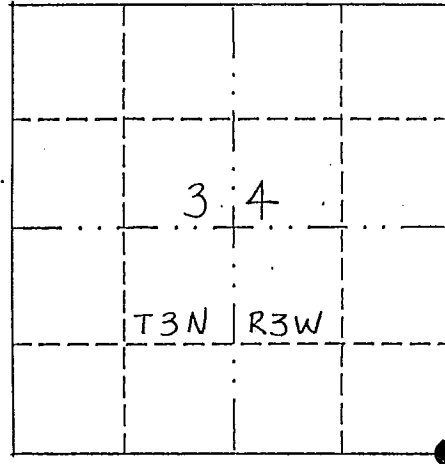


U.S. PUBLIC LAND SURVEY MONUMENT RECORD

THIS RECORD SHALL SHOW THE LOCATION OF THE CORNER AND SHALL INCLUDE ALL OF THE FOLLOWING NINE ELEMENTS (A THROUGH L).

(a) Identify the corner by reference to the U.S. public land survey system.

Southeast Corner - Sec. 34
 T3N - R3W
 Potosi Twp.
 Grant County, Wisconsin



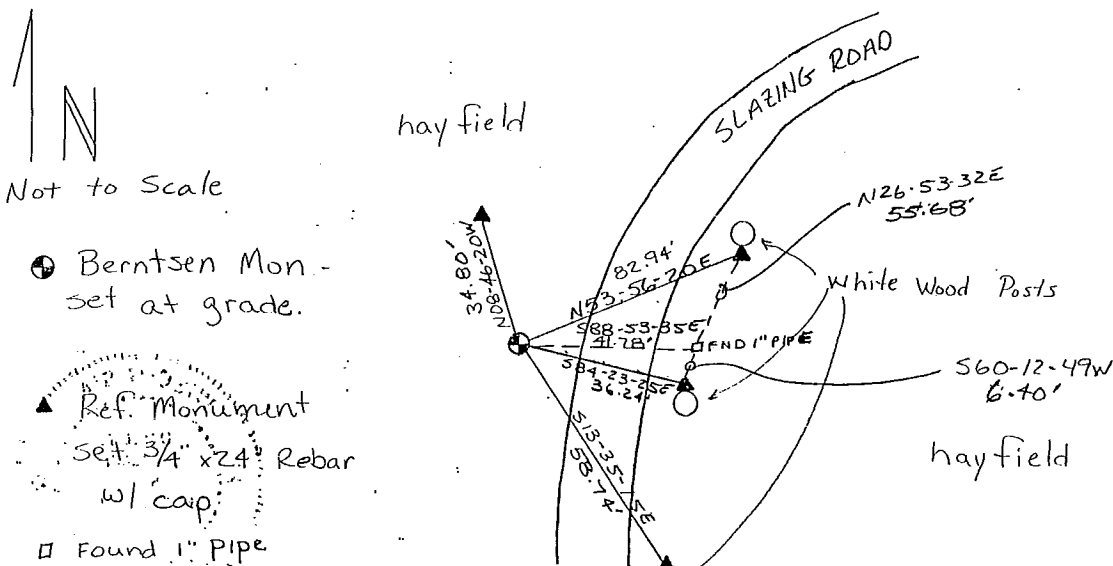
● = corner monument restored.

(b) Describe any record evidence, monument evidence, occupational evidence, testimonial evidence or any other material evidence you considered, and whether the monument was found or placed.

Monument set by running a line from the found monument at the southeast corner of section 35 through a found 1" pipe originally set to be the southeast corner of section 34. Proportional method from S/4 of sec. 35 to the southwest corner of sec. 34, set by EDM traverse.

(c) In the plan view drawing below, provide reference ties to at least four witness monuments, or, if the location is within a municipality, to at least two witness monuments. (Witness monuments shall be made of concrete, natural stone, iron or other equally durable material.) Describe witness monuments.

(d) Show a plan view drawing depicting the relevant monuments and reference ties which is sufficient in detail to enable accurate relocation of the corner monument if the corner monument is disturbed. Indicate north.

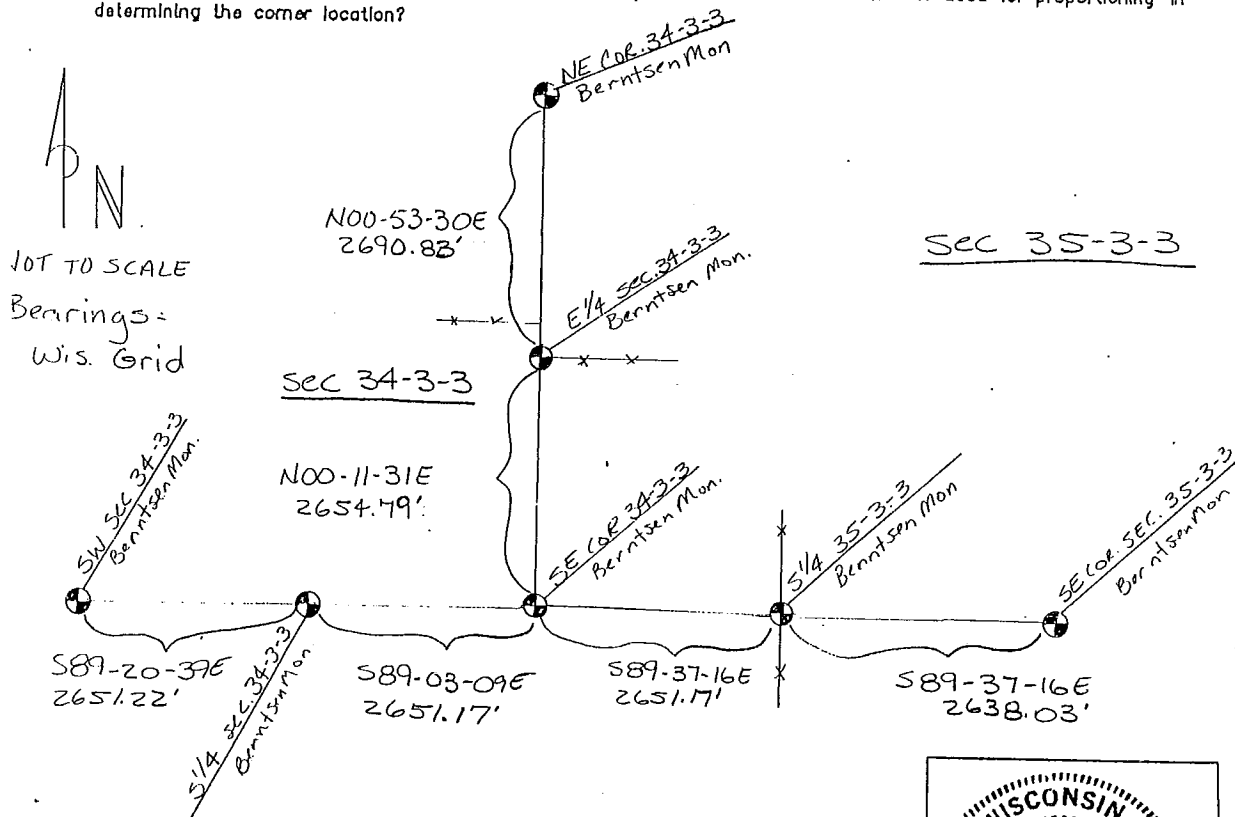


(e) Describe any material discrepancy between the location of the corner as restored or reestablished and the location of that corner as previously restored or reestablished by distance and direction. Show the discrepancy on the plan view drawing under (d), above. Show the distances between the corner as previously restored or reestablished and (1) the corner as restored or reestablished, and (2) to at least two of the witness monuments shown on the drawing in (d), above.

David Krohn survey was referenced to the southeast corner of section 34. A 1" pipe was found at the point he had referenced as southeast corner. Did not fit very well with existing fences and roadway. Held his northing by extending line from southeast corner of sec. 35 through the found 1" pipe and running in a proportional distance from set S/4 corner of sec 35 to found monument at southwest corner of sec. 34.

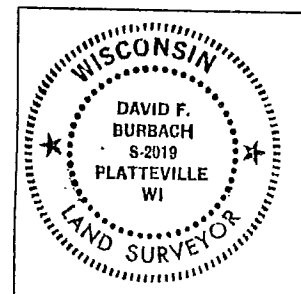
(f) Was the corner restored through acceptance of (1) an obliterated evidence location, or (2) a found perpetuated location?

(g) & (h) Was the corner reestablished through lost corner proportionate methods? If so, show the method, including the directions and distances to other public land survey corners used as evidence or used for proportioning in determining the corner location?



(i) I, DAVID F. BURBACH
 (type or print name) certify that the corner location shown on this record was determined by me or under my direction and control and that this U.S. Public Land Survey Monument Record is correct and complete to the best of my knowledge and belief.

David F. Burbach
 Signature



Date

affix land surveyor seal