

U.S. PUBLIC LAND SURVEY MONUMENT RECORD - GRANT COUNTY, WI

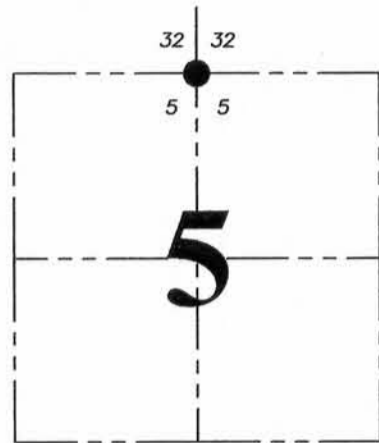
Section 5, Town 2 North Range 3 West, Town of Potosi

CERTIFICATE:

I, Aaron J. Austin, Wisconsin Professional Land Surveyor, do hereby certify that the corner location on this record was determined by me and/or under my direct supervision and that this U.S. Public Land Survey Monument Record is correct and complete to the best of my knowledge and belief.

Dated this 11th day of January, 2016.

Aaron J. Austin
 Aaron J. Austin, S-2922



● = CORNER LOCATION

HISTORY OF CORNER ESTABLISHMENT:

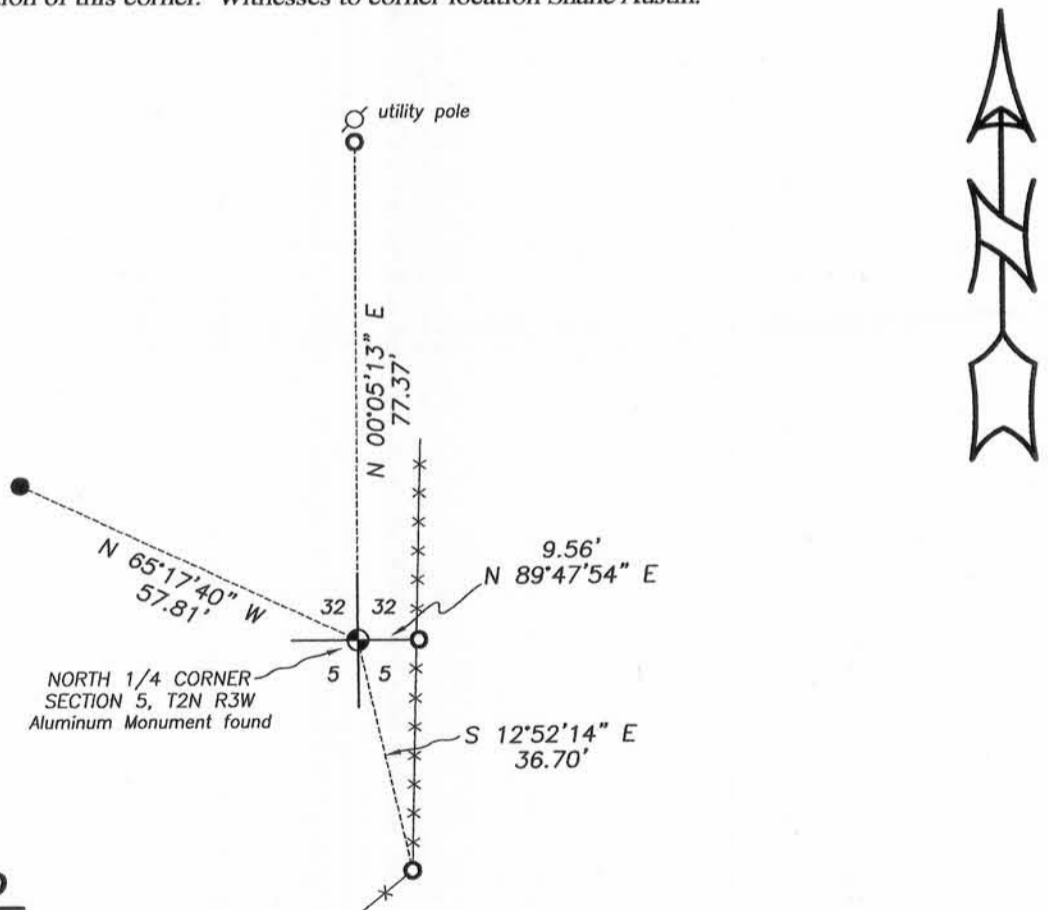
- 1832-Lucius Lyon set original corner.
- 1842-Freeman tied to the corner on a Survey filed in Book A, Page 85.
- 1854-Clark tied to the corner on a Survey filed in Book C, Page 128.
- 1989-F. Curtis Crook reset the corner and filed a U.S. Public Land Survey Monument Record.
- 1997-Larry Austin tied to the corner on a Survey filed in Book 1, Page 57.
- 2001-Larry Austin tied to the corner on a Survey filed in Book 8, Page 88.
- 2001-Larry Austin tied to the corner on a Survey filed in Book 9, Page 77.
- 2011-Aaron Austin tied to the corner on a Survey filed in Book 30, Pages 27 and 87.
- 2011-Stanley King tied to the corner on C.S.M. No. 1581.

DESCRIPTION OF CORNER EVIDENCE FOUND:

I found the Aluminum Monument in place and three witness corners as established by F. Curtis Crook. I set one witness corner after I verified it's location with E.D.M. and G.P.S. methods.

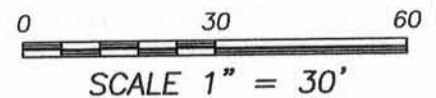
DESCRIPTION OF CORNER AND WITNESS MONUMENTS, references and accessories used to perpetuate the original or re-established location of this corner. Witnesses to corner location Shane Austin.

SKETCH:



LEGEND

- ⊕ Section Corner—as designated
- 3/4" rebar found
- 1/2" x 12" Rebar set
- x-x- Existing fence



Austin Engineering LLC
 austinengineeringllc.com

4211 HWY 81 E, LANCASTER, WI 53813
 PHONE: 608-723-6363 FAX: 608-723-6702

JOB NO: 15s238
 H:CRD\15s238
 H:\TIE\T2NR3W\10

FIELDBOOK: TDSR
 DRAWN BY: AJ AUSTIN
 CREW: SW AUSTIN

U. S. PUBLIC LAND SURVEY MONUMENT RECORD

INSTRUCTIONS: This record shall show the location of the corner and shall include all of the following nine elements (a through i).

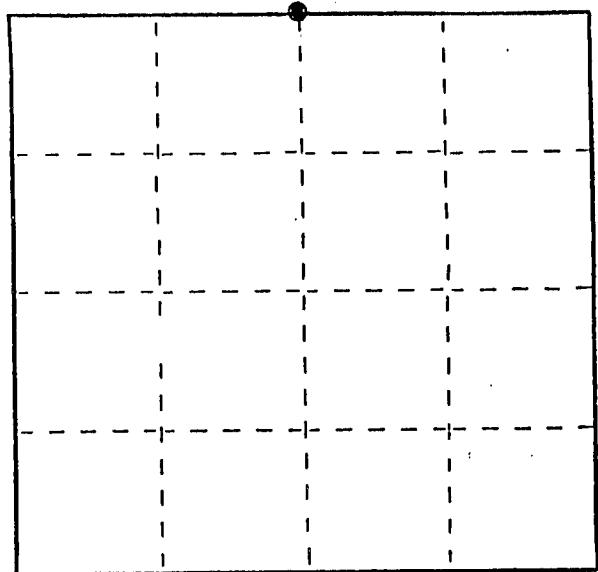
- (a) Identify the corner by reference to the U.S. public land survey system.
 ● = Corner monument restored.

N 1/4 Corner of Section 5

T 2 N R 3 W

Town of Potosi (South Part)

Grant Co., Wis.



Section 5 T2N R3W

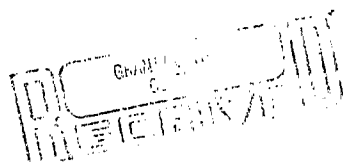
- (b) Describe any record evidence, monument evidence, occupational evidence, testimonial evidence or any other material evidence you considered, and whether the monument was found or placed.

Originally set by Lucius Lyon in the 1st 1/4 of 1833. Found no re-surveys on record. Army Corps of Engineers (War Department) map shows the corner at this location. Checks with section measurements by EDM traverse.

- (c) In the plan view drawing below, provide reference ties to at least 4 witness monuments, or, if the location is within a municipality, to at least 2 witness monuments. (Witness monuments shall be made of concrete, natural stone, iron or other equally durable material.) Describe witness monuments.

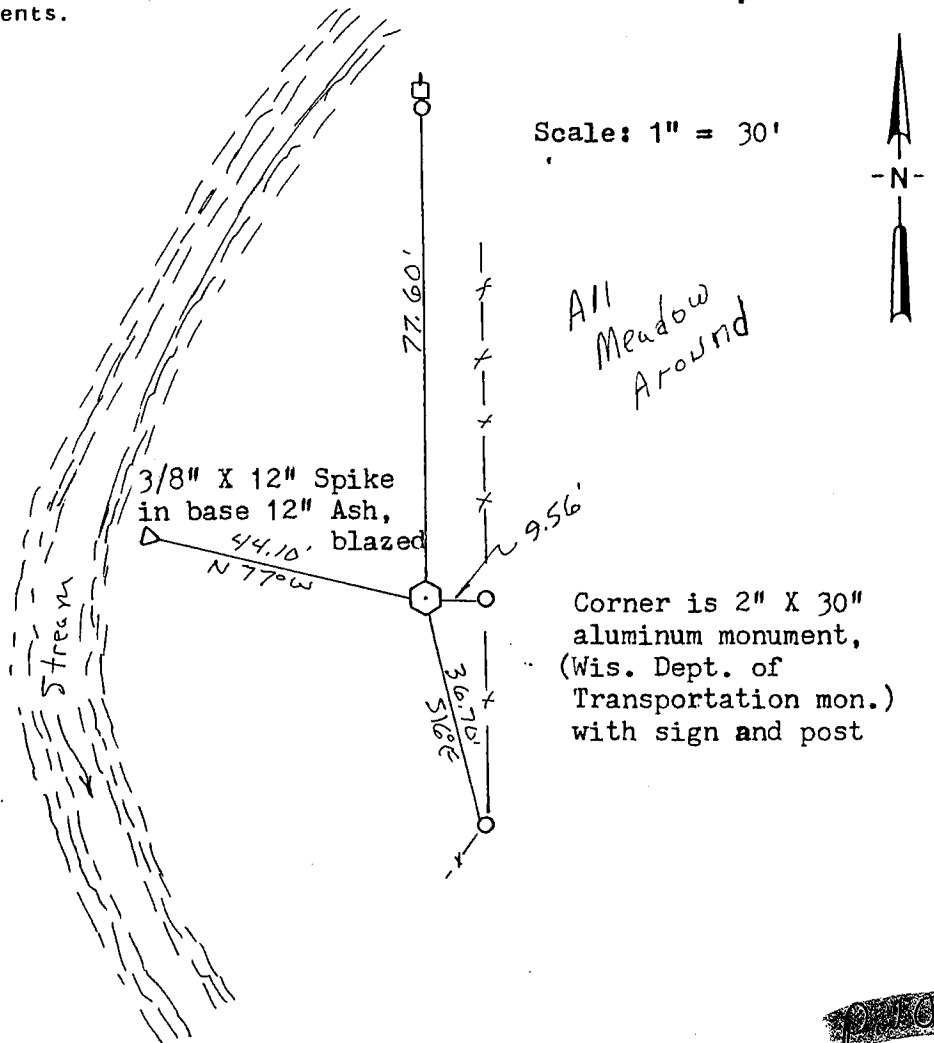
- (d) Show a plan view drawing depicting the relevant monuments and reference ties which is sufficient in detail to enable accurate relocation of the corner monument if the corner monument is disturbed. Indicate north.

(Bearings shown are for orientation purposes only)



○ 3/4" Rebar set

SEP. 13. 1989



- (e) Describe any material discrepancy between the location of the corner as restored or reestablished and the location of that corner as previously restored or reestablished by distance and direction. Show the discrepancy on the plan view drawing under (d), above. Show the distances between the corner as previously restored or reestablished and (1) the corner as restored or reestablished, and (2) to at least 2 of the witness monuments shown on the drawing in (d), above.

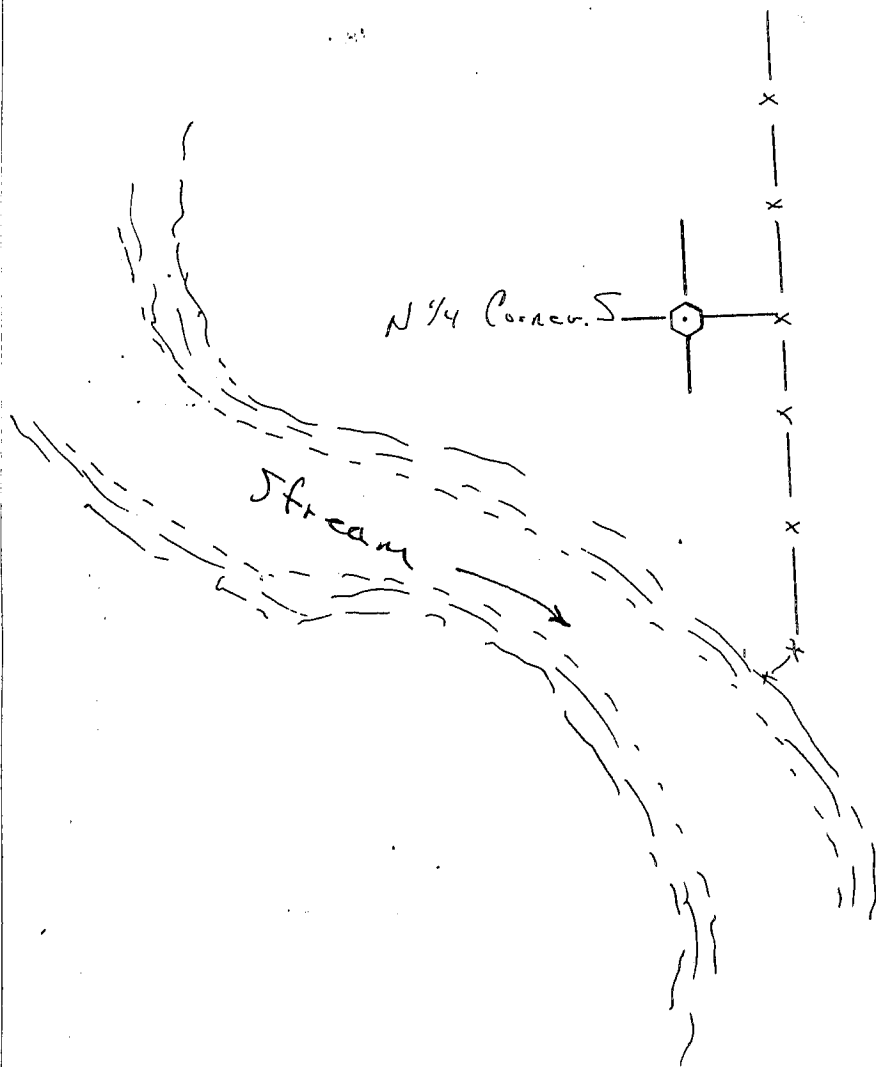
NONE

- (f) Was the corner restored through acceptance of (1) an obliterated evidence location, or, (2) a found perpetuated location?

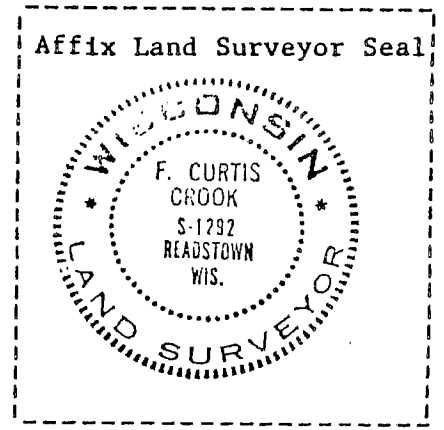
Obliterated evidence location

- (g&h) Was the corner reestablished through lost corner proportionate methods? If so, show the method, including the directions and distances to other public land survey corners used as evidence or used for proportioning in determining the corner location?

No



Corps Monument Not Shown (or Called) at This Point; Exploration by hand revealed No trace of any evidence; Area Shown on 100. Scale Topo Map by Corps of Eng. appears Unchanged. Location Scaled & Compared w/ Section Measurements



- (1) I, F. Curtis Crook (type or print name) certify that the corner location shown on this record was determined by me or under my direction and control and that this U.S. Public Land Survey Monument Record is correct and complete to the best of my knowledge and belief.

F. Curtis Crook 5-25-89

Sketch Added 6-6-89