

U. S. PUBLIC LAND SURVEY MONUMENT RECORD

INSTRUCTIONS :

This record shall show the location of the corner and shall include all of the following nine elements (a through i).

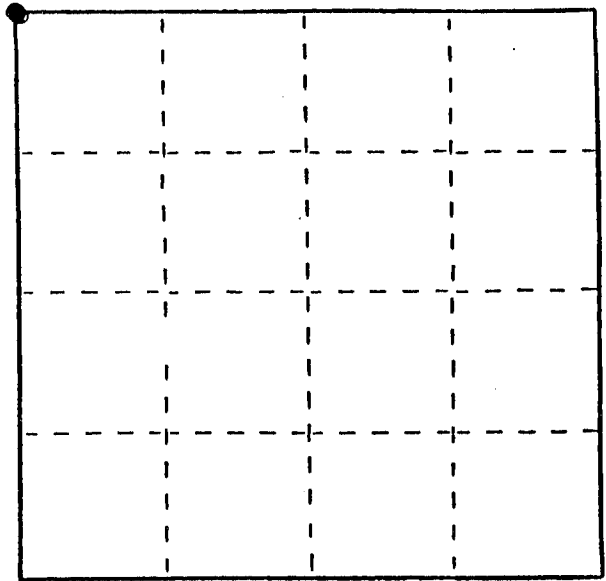
- (a) Identify the corner by reference to the U.S. public land survey system.
- = Corner monument restored.

NW Corner of Section 4

T 2 N R 3 W

Town of Potosi (South Part)

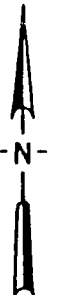
Grant Co., Wis.



Section 4 T2N R3W

- (b) Describe any record evidence, monument evidence, occupational evidence, testimonial evidence or any other material evidence you considered, and whether the monument was found or placed. Originally set by Lucius Lyon in the 1st 1/4 of 1833. A survey in 1900 by Charles Sampson (Section 5), shows "corner by J.C. Scott, of which I found no record. Other early surveys in the Sections to the north do not use the corner. In May of 1972, a survey in the NW1/4, signed by Charles Lange and signed/stamped by Homer Ralph Jr. commences at a stone at the NE corner of the NW-NW, and appears to meet the fenceline on the West line of the Section, not extending to the NW corner. In a survey in the NE1/4 (date unknown, but appears to be late 1980's) uses this stone to establish/confirm the NE corner. (This survey by Dennis Snyder, RLS). Although I could find no record of the origin of this stone, I then used it to reconstruct the North line of the Section, the N1/4 corner, and resultantly, this corner. While falling somewhat to the East of the existing fenceline leading South, (appears to meander), it does fit well with 2640' to the West, the N1/4 corner of Section 5.
- (c) In the plan view drawing below, provide reference ties to at least 4 witness monuments, or, if the location is within a municipality, to at least 2 witness monuments. (Witness monuments shall be made of concrete, natural stone, iron or other equally durable material.) Describe witness monuments.
- (d) Show a plan view drawing depicting the relevant monuments and reference ties which is sufficient in detail to enable accurate relocation of the corner monument if the corner monument is disturbed. Indicate north.

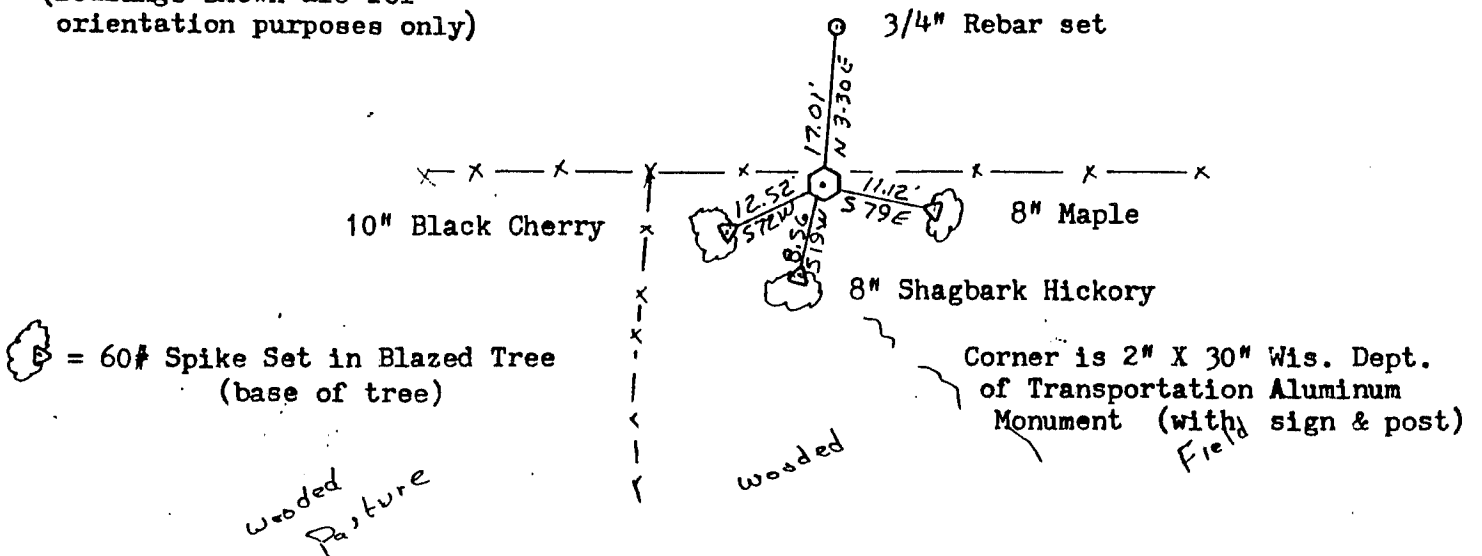
Scale: 1" = 20'



SEP 13 1989

Pasture

(Bearings shown are for orientation purposes only)



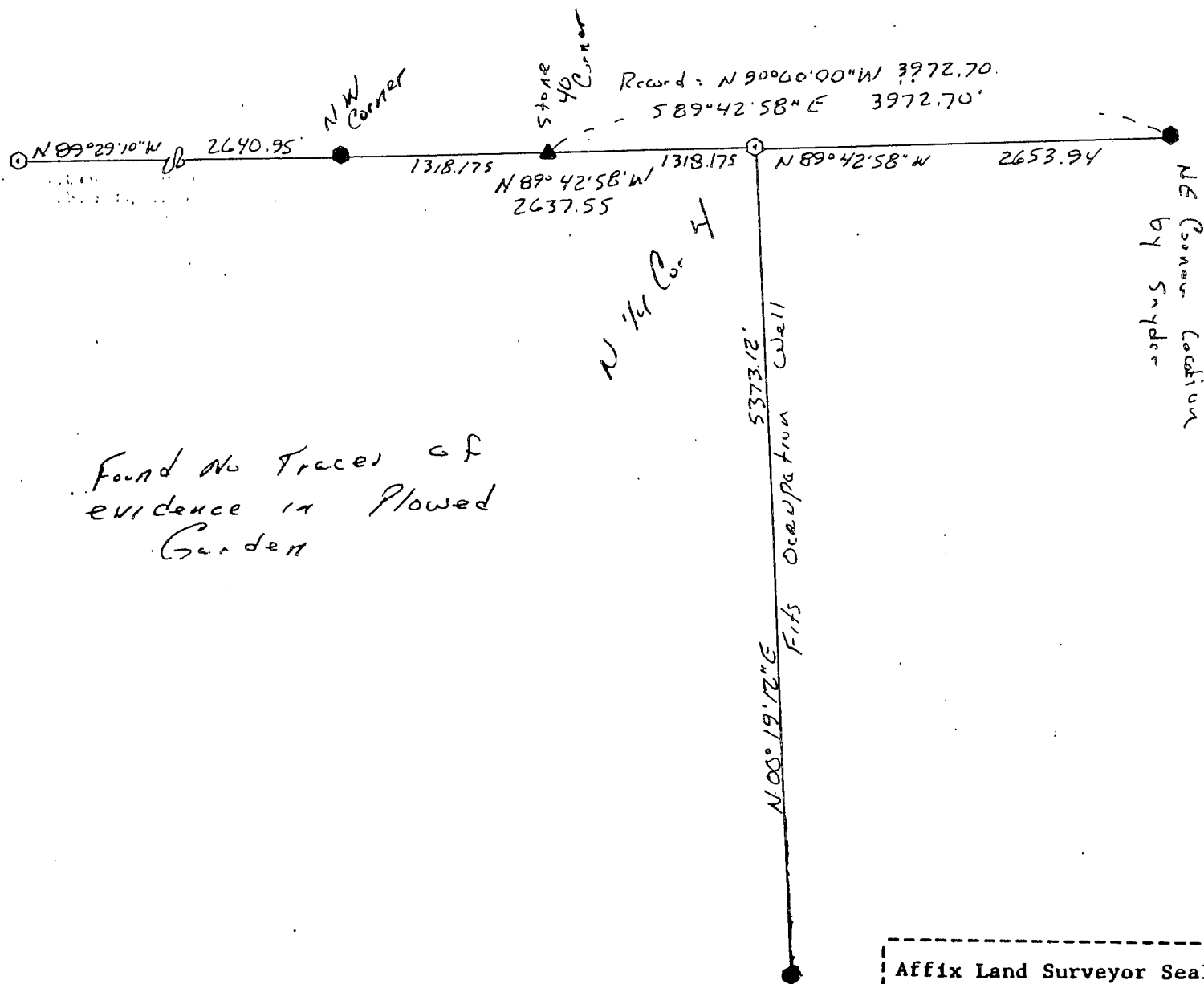
(e) Describe any material discrepancy between the location of the corner as restored or reestablished and the location of that corner as previously restored or reestablished by distance and direction. Show the discrepancy on the plan view drawing under (d), above. Show the distances between the corner as previously restored or reestablished and (1) the corner as restored or reestablished, and (2) to at least 2 of the witness monuments shown on the drawing in (d), above.

NONE

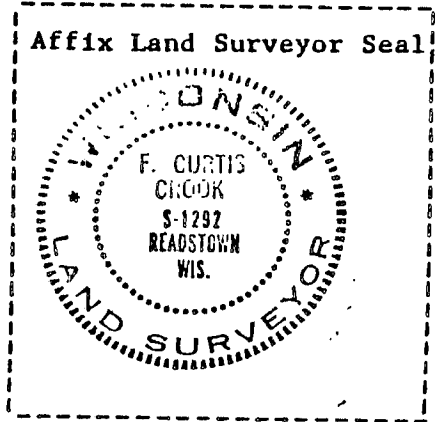
(f) Was the corner restored through acceptance of (1) an obliterated evidence location, or, (2) a found perpetuated location?

Obliterated evidence location

(g&h) Was the corner reestablished through lost corner proportionate methods? If so, show the method, including the directions and distances to other public land survey corners used as evidence or used for proportioning in determining the corner location?



Found no traces of evidence in Plowed Garden



(1) I, F. Curtis Crook (type or print name) certify that the corner location shown on this record was determined by me or under my direction and control and that this U.S. Public Land Survey Monument Record is correct and complete to the best of my knowledge and belief.

F. Curtis Crook S-25-89
Sketch Added 6-6-89