

# U.S. PUBLIC LAND SURVEY MONUMENT RECORD - GRANT COUNTY, WI

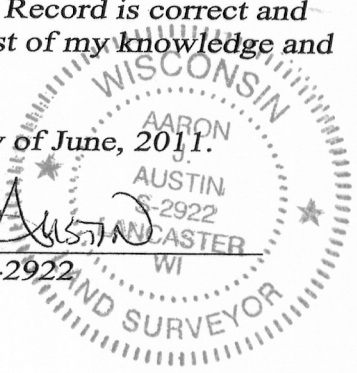
Section 24, Town 3 North Range 3 West, Town of Potosi

**CERTIFICATE:**

I, Aaron J. Austin, do hereby certify that the corner location on this record was determined by me and/or under my direct supervision and that this U.S. Public Land Survey Monument Record is correct and complete to the best of my knowledge and belief.

Dated this 21st day of June, 2011.

*Aaron J. Austin*  
 Aaron J. Austin, S-2922



● = CORNER LOCATION

HISTORY OF CORNER ESTABLISHMENT:

Corner originally set by Lucius Lyon in 1832. John Clark tied to the corner in 1854 and made no mention of the monument. No other records of this corner could be found.

DESCRIPTION OF CORNER EVIDENCE FOUND:

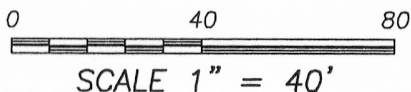
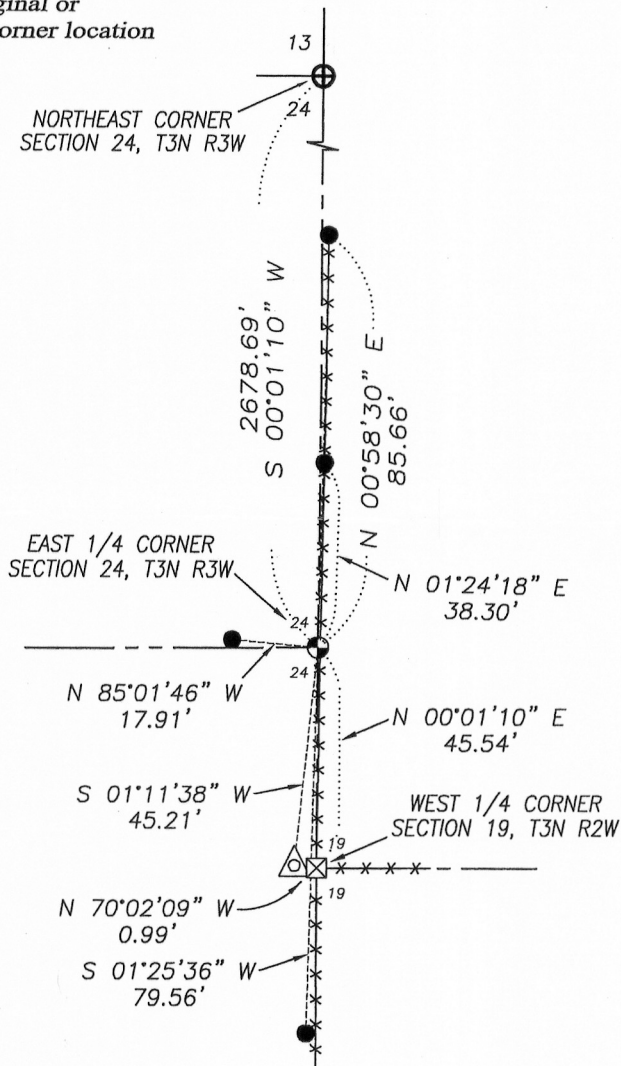
No evidence to the location of the original monument could be found. I set the corner at the proportional offset from the West 1/4 corner of Section 19, T3N R2W. Verified this location with E.D.M. and G.P.S. methods.

DESCRIPTION OF CORNER AND WITNESS MONUMENTS,  
 references and accessories used to perpetuate the original or re-established location of this corner. Witnesses to corner location Bobby Sedgwick & Shelby Blindert

SKETCH:

**LEGEND**

- ⊕ No. 8 x 30" rebar set with Grant County Aluminum Cap
- ⊕ No. 8 rebar found with Grant County Aluminum Cap
- ⊗ Stone monument found
- △ 1 1/2" diameter iron pipe found
- Number 4 x 24" Rebar set with red plastic "TIE" cap
- x-x- Approximate existing fence



**Austin Engineering LLC**  
 austinengineeringllc.com

4211 HWY 81 E, LANCASTER, WI 53813  
 PHONE: 608-723-6363 FAX: 608-723-6702

JOB NO: 11s128  
 G:\T3NR3W\36  
 H:\TIE\T3NR3W\80

FIELDBOOK: TDSR  
 DRAWN BY: AJ AUSTIN  
 CREW: BS-SB

Harrison Twp.

U.S. PUBLIC LAND SURVEY MONUMENT RECORD

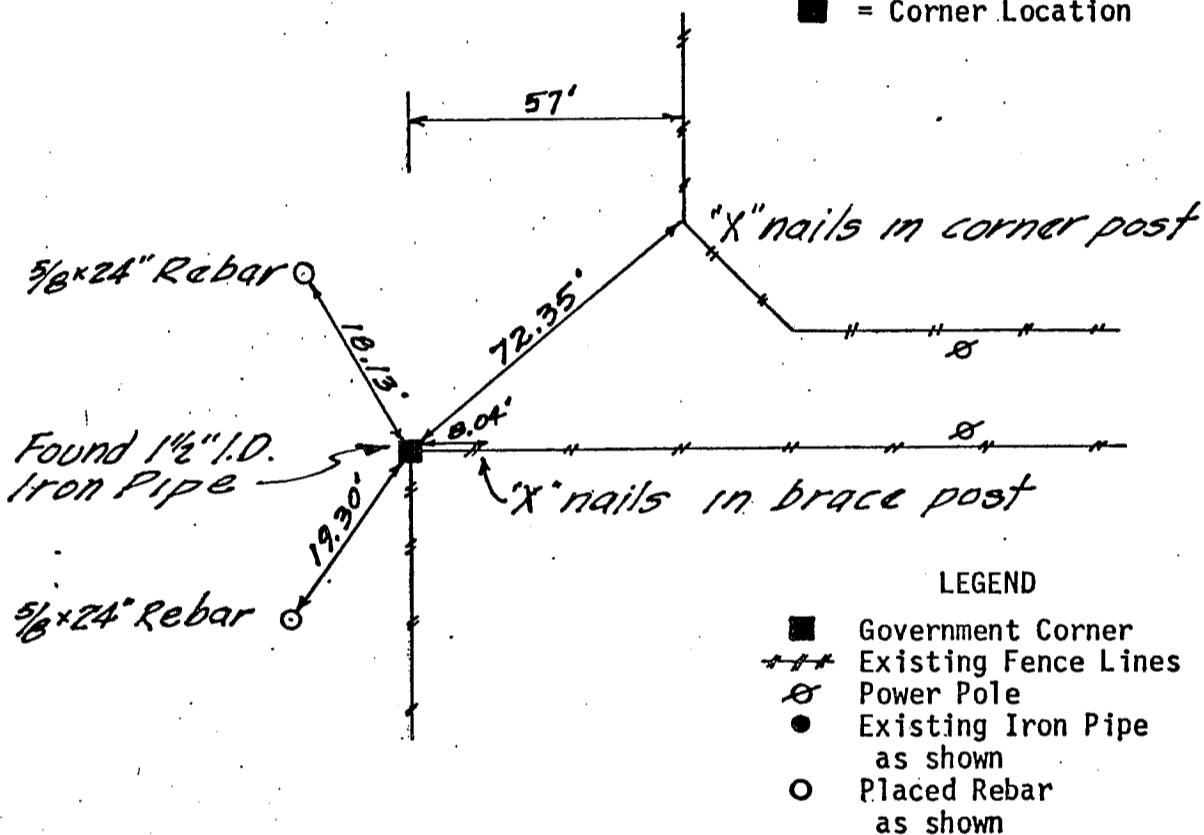
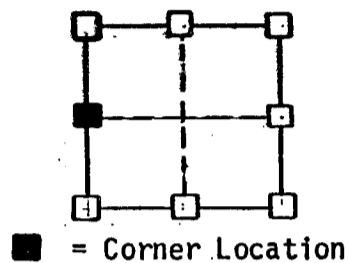
GRANT COUNTY, WISCONSIN

SECTION 19 TOWNSHIP 3N RANGE 2W CORNER W 1/4

EVIDENCE: Found 1 1/2" I.D. iron pipe at fence line intersection. 3" above ground.

MONUMENT: Found  Placed

METHOD: Accepted Existing Location   
Accepted Occupation   
Lost Corner Porportionate Methods



HISTORY & OTHER INFORMATION: Previously called out as a 1" iron pipe.

I, Ronald J. Turner, hereby certify that the corner location shown hereon this record was determined by me or under my direction and control and that this U.S. Public Land Survey Monument Record is correct and complete to the best of my knowledge and belief.



Jan 3, 1985  
Date

Ronald J. Turner  
Registered Land Surveyor  
No. 5-1794

RECEIVED  
GRANT COUNTY CLERK

**SHIVE-HATTERY ENGINEERS**  
Cedar Rapids • Iowa City • Davenport  
Des Moines • Dubuque • Rock Island

JAN 7 1985

74

Harrison Twp.

U.S. PUBLIC LAND SURVEY MONUMENT RECORD

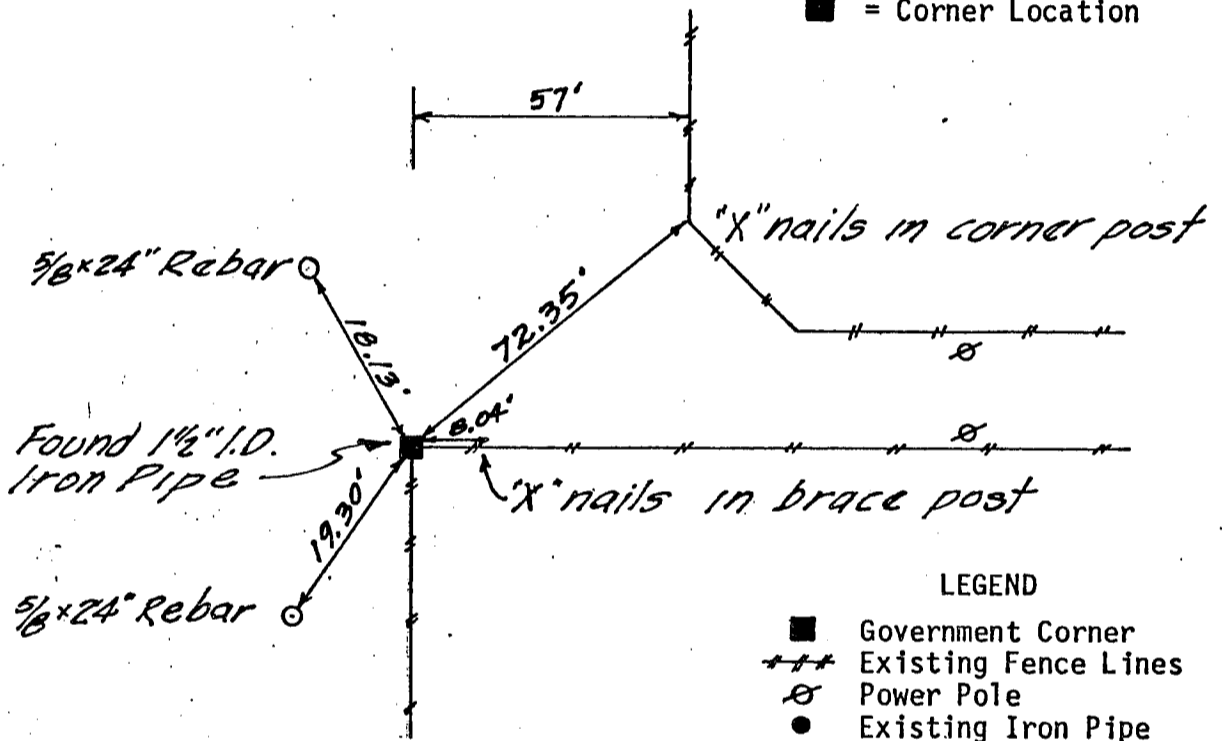
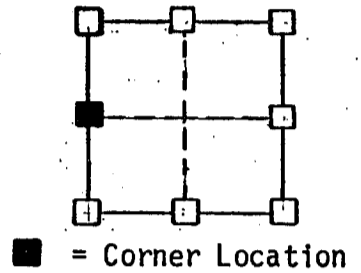
GRANT COUNTY, WISCONSIN

SECTION 19 TOWNSHIP 3N RANGE 2W CORNER W 1/4

EVIDENCE: Found 1 1/2" I.O. iron pipe at fence line intersection. 3" above ground.

MONUMENT: Found  Placed

METHOD: Accepted Existing Location   
Accepted Occupation   
Lost Corner Porportionate Methods



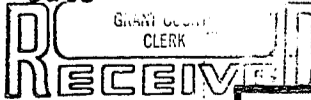
- LEGEND
- Government Corner
  - +++ Existing Fence Lines
  - ⊗ Power Pole
  - Existing Iron Pipe as shown
  - Placed Rebar as shown

HISTORY & OTHER INFORMATION: Previously called out as a 1" iron pipe.

I, Ronald J. Turner, hereby certify that the corner location shown hereon this record was determined by me or under my direction and control and that this U.S. Public Land Survey Monument Record is correct and complete to the best of my knowledge and belief.



Jan 3, 1985 Ronald J. Turner  
Date Registered Land Surveyor  
No. 5-1794



**SHIVE-HATTERY ENGINEERS**  
Cedar Rapids • Iowa City • Davenport  
Des Moines • Dubuque • Rock Island

JAN 7 1985

U.S. PUBLIC LAND SURVEY MONUMENT RECORD

Harrison Twp.

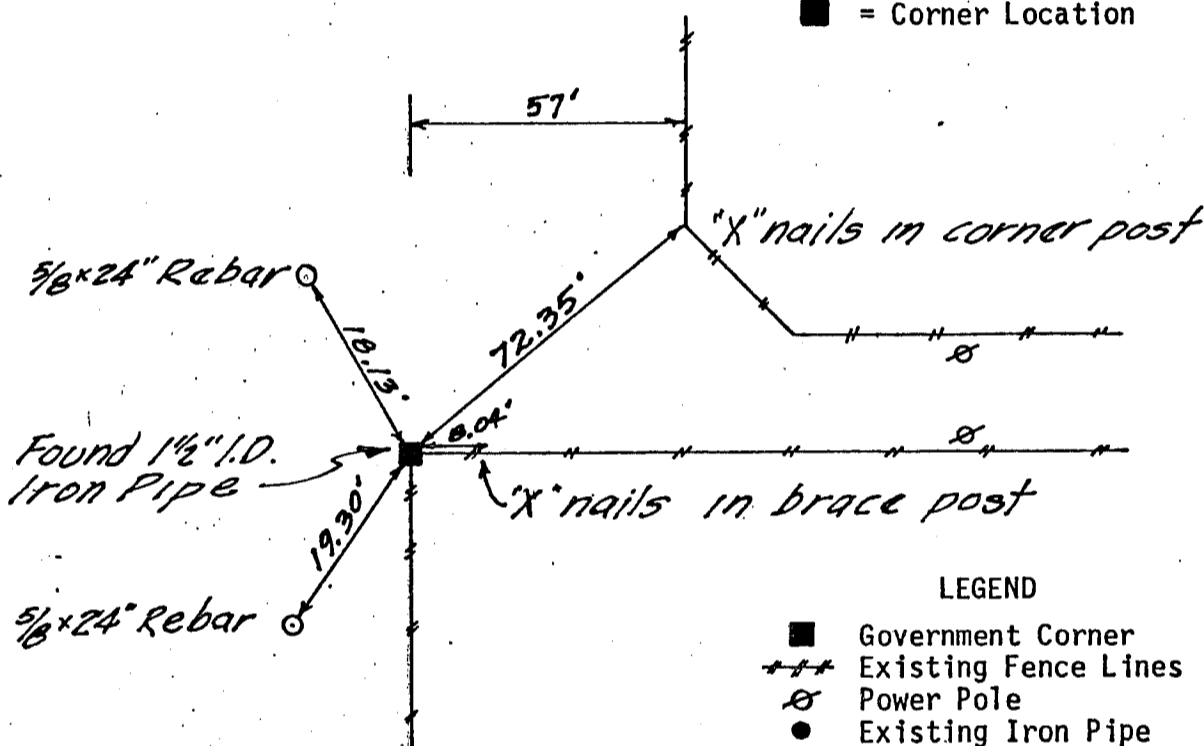
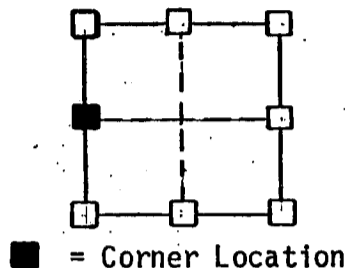
GRANT COUNTY, WISCONSIN

SECTION 19 TOWNSHIP 3N RANGE 2W CORNER W 1/4

EVIDENCE: Found 1 1/2" I.D. iron pipe at fence line intersection. 3" above ground.

MONUMENT: Found  Placed

METHOD: Accepted Existing Location   
Accepted Occupation   
Lost Corner Porportionate Methods

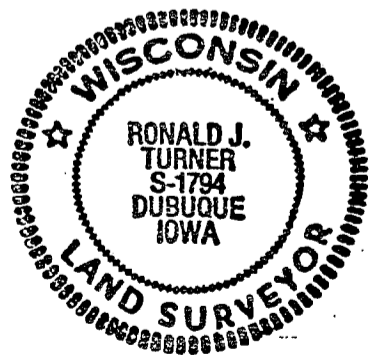


LEGEND

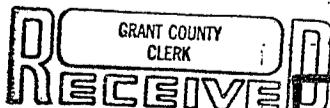
- Government Corner
- +++ Existing Fence Lines
- ⊗ Power Pole
- Existing Iron Pipe as shown
- Placed Rebar as shown

HISTORY & OTHER INFORMATION: Previously called out as a 1" iron pipe.

I, Ronald J. Turner, hereby certify that the corner location shown hereon this record was determined by me or under my direction and control and that this U.S. Public Land Survey Monument Record is correct and complete to the best of my knowledge and belief.



Jan 3, 1985 Ronald J. Turner  
Date Registered Land Surveyor  
No. S-1794



SHIVE-HATTERY ENGINEERS

Cedar Rapids • Iowa City • Davenport  
Des Moines • Dubuque • Rock Island



JAN 7 1985