

U.S. PUBLIC LAND SURVEY MONUMENT RECORD - GRANT COUNTY, WI

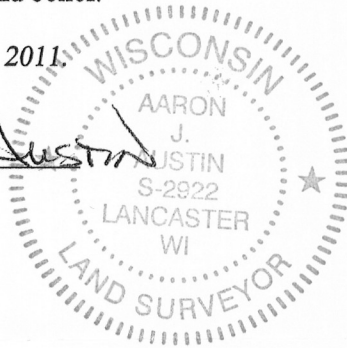
Section 24, Town 3 North Range 3 West, Town of Potosi

CERTIFICATE:

I, Aaron J. Austin, do hereby certify that the corner location on this record was determined by me and/or under my direct supervision and that this U.S. Public Land Survey Monument Record is correct and complete to the best of my knowledge and belief.

Dated this 7th day of October, 2011.

Aaron J. Austin
 Aaron J. Austin, S-2922



● = CORNER LOCATION

HISTORY OF CORNER ESTABLISHMENT:

Corner was originally set by Lucius Lyon in 1832. John Clarke tied to the corner in 1854. Joel Barber also tied to the corner in 1875. No other record was found for this corner.

DESCRIPTION OF CORNER EVIDENCE FOUND:

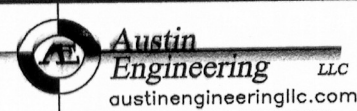
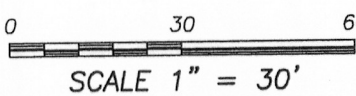
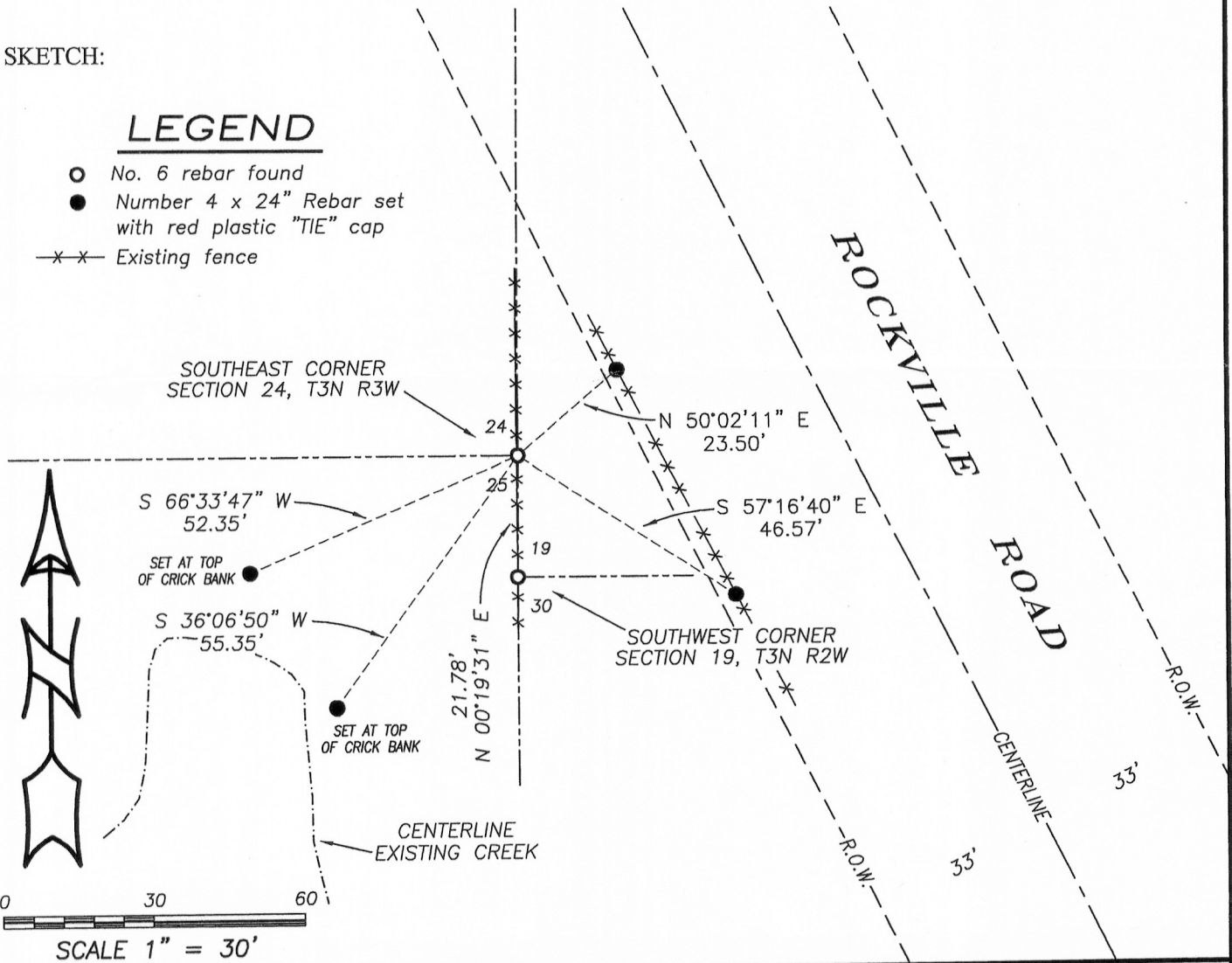
I was unable to locate any evidence of the original corner. I found and accepted a No. 6 rebar and verified this location by E.D.M. and G.P.S. methods. It should be noted that adjoining section corners to the West and South were set by Steven Rossman on C.S.M. No. 613. Those corners were also No. 6 rebars and no ties sheets were found for those corners.

DESCRIPTION OF CORNER AND WITNESS MONUMENTS, references and accessories used to perpetuate the original or re-established location of this corner. Witnesses to corner location Bobby Sedgwick & Shelby Blindert

SKETCH:

LEGEND

- No. 6 rebar found
- Number 4 x 24" Rebar set with red plastic "TIE" cap
- x-x- Existing fence



4211 HWY 81 E, LANCASTER, WI 53813
 PHONE: 608-723-6363 FAX: 608-723-6702

JOB NO: 11s197
 G:\T3NR3W\36
 H:\TIE\T3NR3W\81

FIELDBOOK: TDSR
 DRAWN BY: AJ AUSTIN
 CREW: BS-SB

U.S. PUBLIC LAND SURVEY MONUMENT RECORD - GRANT COUNTY, WI

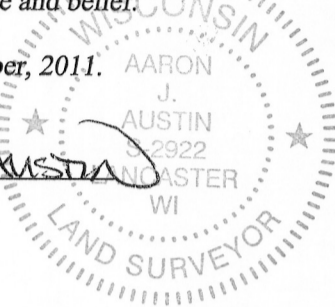
Section 19, Town 3 North Range 2 West, Town of Harrison

CERTIFICATE:

I, Aaron J. Austin, do hereby certify that the corner location on this record was determined by me and/or under my direct supervision and that this U.S. Public Land Survey Monument Record is correct and complete to the best of my knowledge and belief.

Dated this 7th day of October, 2011.

Aaron J. Austin
 Aaron J. Austin, S-2922



● = CORNER LOCATION

HISTORY OF CORNER ESTABLISHMENT:

Corner was originally set by Robert Clark in 1833. Stuntz tied to the corner in 1849. McFall tied to the corner in 1871. Sampson tied to the corner in 1892. No other record was found for this corner.

DESCRIPTION OF CORNER EVIDENCE FOUND:

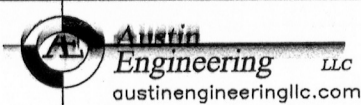
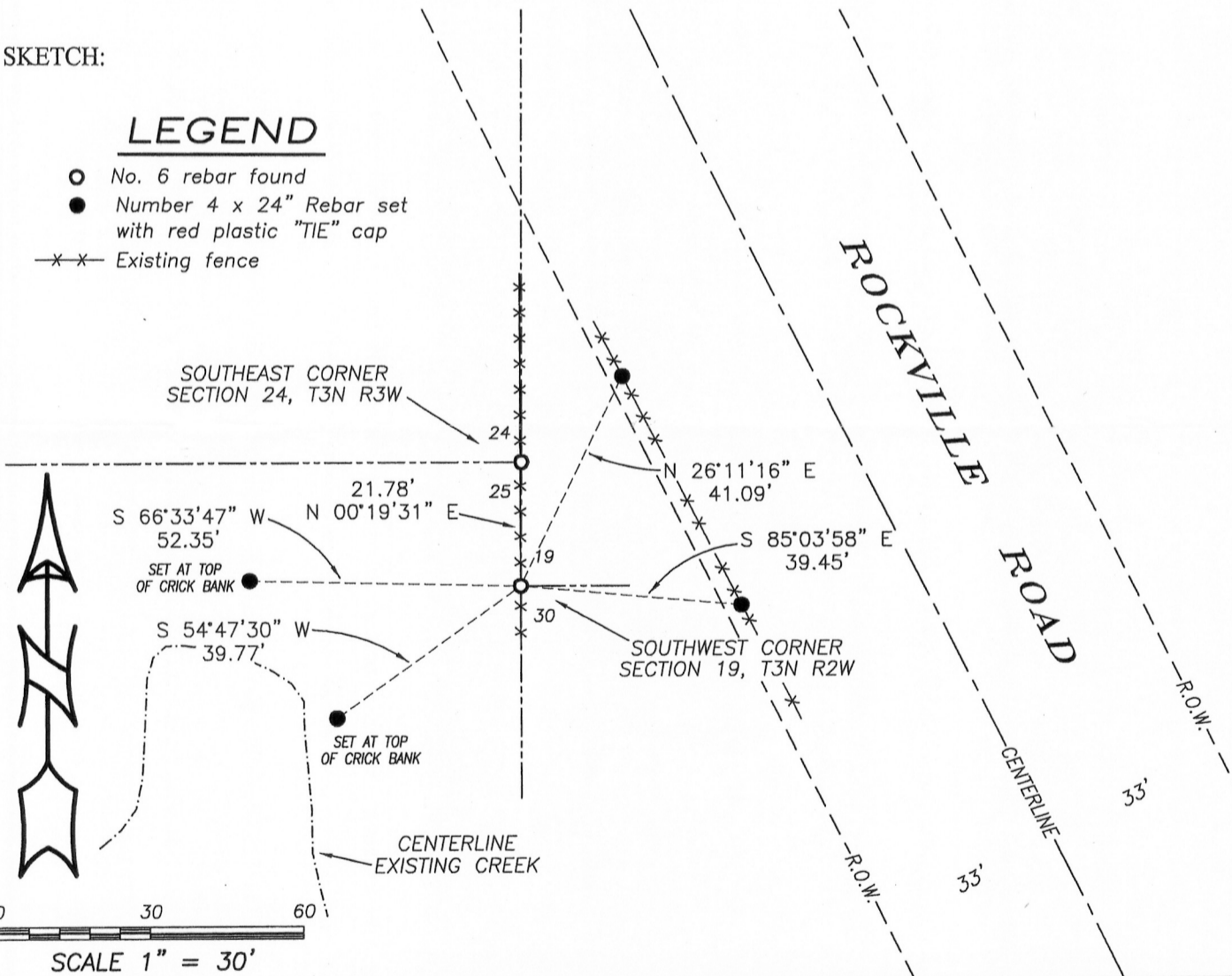
I was unable to locate any evidence of the original corner. I found and accepted a No. 6 rebar and verified this location by E.D.M. and G.P.S. methods. It should be noted that adjoining section corners to the West and South were set by Steven Rossman on C.S.M. No. 613. Those corners were also No. 6 rebars and no ties sheets were found for those corners.

DESCRIPTION OF CORNER AND WITNESS MONUMENTS, references and accessories used to perpetuate the original or re-established location of this corner. Witnesses to corner location Bobby Sedgwick & Shelby Blindert

SKETCH:

LEGEND

- No. 6 rebar found
- Number 4 x 24" Rebar set with red plastic "TIE" cap
- x-x- Existing fence



4211 HWY 81 E, LANCASTER, WI 53813
 PHONE: 608-723-6363 FAX: 608-723-6702

JOB NO: 11s197
 G:\T3NR3W\36
 H:\TIE\T3NR2W\93

FIELDBOOK: TDSR
 DRAWN BY: AJ AUSTIN
 CREW: BS-SB