

CERTIFIED LAND CORNER

STATE OF WISCONSIN)
 COUNTY OF GRANT) S.S.

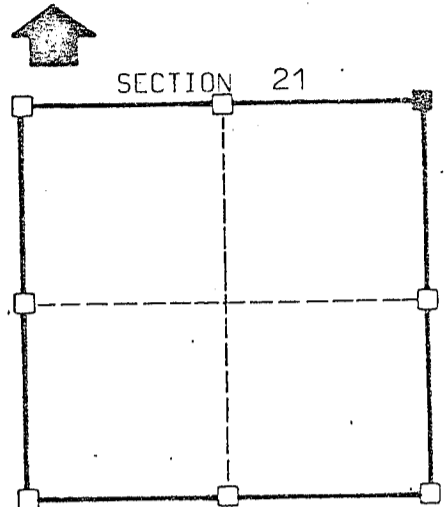
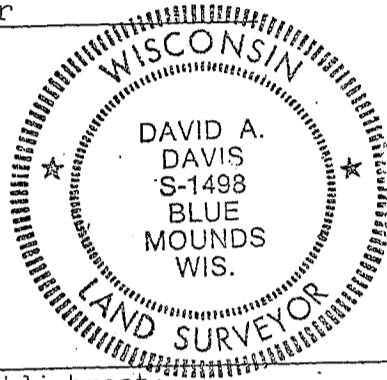
CERTIFICATE

I, David A. Davis, do hereby certify that on the day of December 1980, I found (evidence) ~~(no evidence)~~ of the Northeast corner of Section 21, T 3 N, R 3 W, Fourth Principal Meridian, and I re-established said corner according to the Wisconsin Statutes as shown and described hereon.

Dated this 22 day of September 1981

David A. Davis
 Registered land surveyor
 Title

SOUTHWEST ENGINEERING, INC.
 206 S. Iowa Street
 DODGEVILLE, WIS. 53533



■ = corner location
 T 3 N R 3 W
 Town of: Potosi

Seal

History of original corner establishment:

1871 survey by Geo. McFall found original corner.

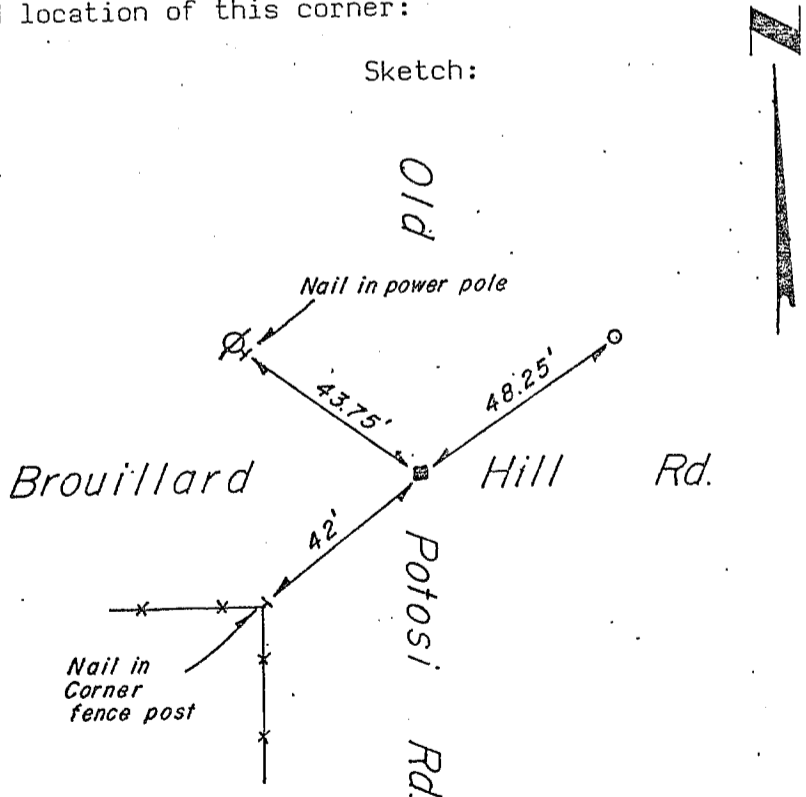
Description of corner evidence found:

Accepted the travelled centerlines of Old Potosi Rd. & Brouillard Rd.
 intersection of

Description of corner and witness monuments, references and accessories used to perpetuate the original or re-established location of this corner:

Witnesses to corner location:

Sketch:



Legend

- ⊙ Power pole
- x—x— Fenceline
- 2" ∅ Iron pipe set
- No. 10 (1-1/4" ∅) Rebar

SURVEY CONTROL ORDER

Horizontal		WISCONSIN COORDINATE SYSTEM		
Vertical	East (X)	North (Y)	Elevation (Z)	Zone
Corner				
Control Station Name				