

U.S. PUBLIC LAND SURVEY MONUMENT RECORD - GRANT COUNTY, WI

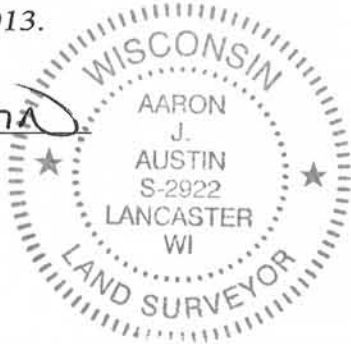
Section 13, Town 3 North Range 3 West, Town of Potosi

CERTIFICATE:

I, Aaron J. Austin, do hereby certify that the corner location on this record was determined by me and/or under my direct supervision and that this U.S. Public Land Survey Monument Record is correct and complete to the best of my knowledge and belief.

Dated this 16th day of May, 2013.

Aaron J. Austin
 Aaron J. Austin, S-2922



● = CORNER LOCATION

HISTORY OF CORNER ESTABLISHMENT:

Corner originally set in 1832 by Lucius Lyon. In 1883 J.C. Scott found a stake. In 1998 Larry Austin set a No. 10 rebar and filed a U.S. Public Land Survey Monument Record.

DESCRIPTION OF CORNER EVIDENCE FOUND:

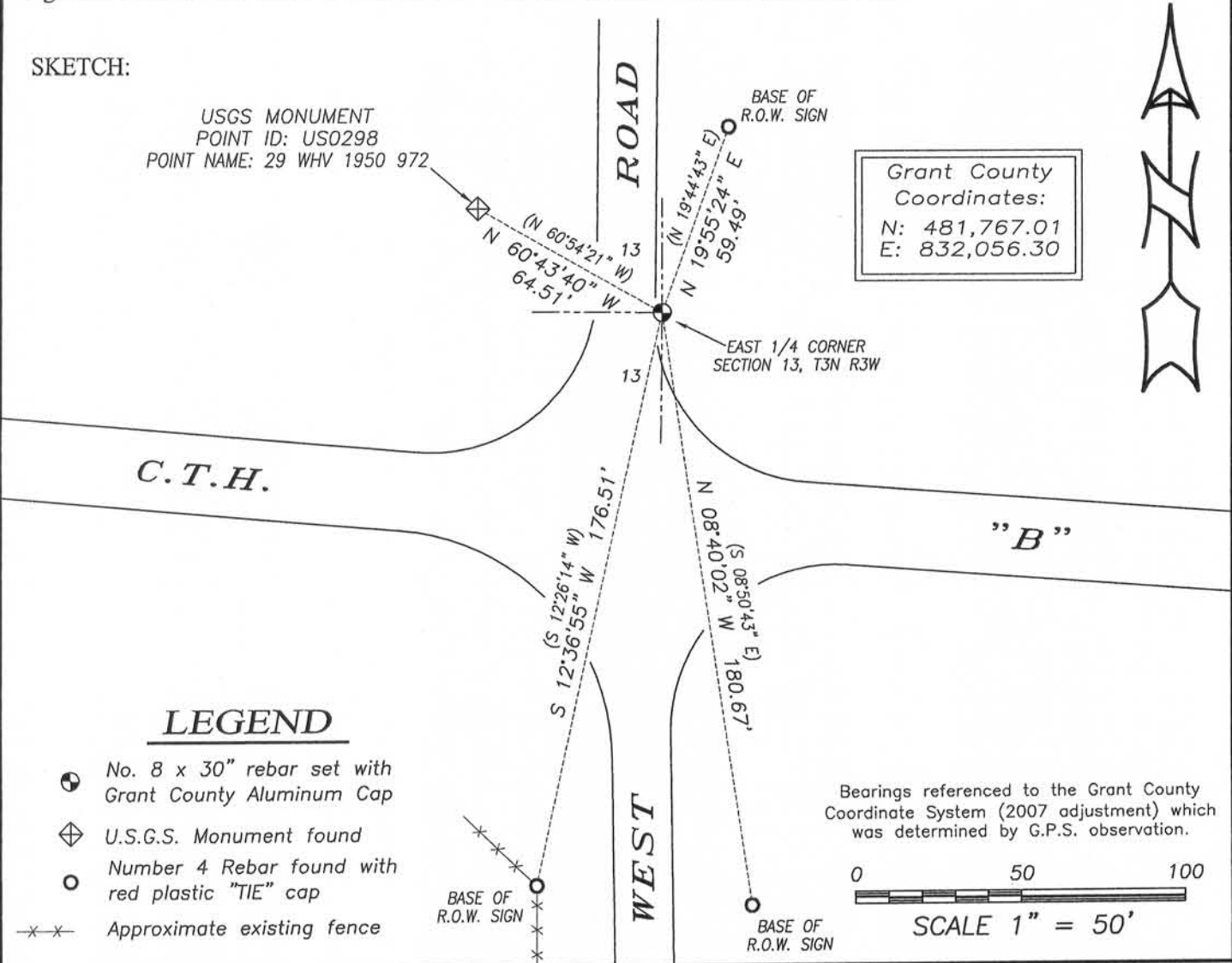
The No. 10 rebar could not be recovered. I reset a No. 8 rebar with a Grant County Aluminum Cap from found ties established by Larry Austin. All ties were in good condition. I verified this location by G.P.S. methods.

DESCRIPTION OF CORNER AND WITNESS MONUMENTS, references and accessories used to perpetuate the original or re-established location of this corner. Witnesses to corner location Shane Austin.

SKETCH:

USGS MONUMENT
 POINT ID: US0298
 POINT NAME: 29 WHV 1950 972

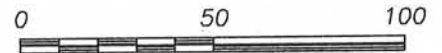
Grant County
 Coordinates:
 N: 481,767.01
 E: 832,056.30



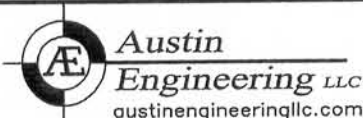
LEGEND

- No. 8 x 30" rebar set with Grant County Aluminum Cap
- ⊠ U.S.G.S. Monument found
- Number 4 Rebar found with red plastic "TIE" cap
- x-x- Approximate existing fence

Bearings referenced to the Grant County Coordinate System (2007 adjustment) which was determined by G.P.S. observation.



SCALE 1" = 50'



4211 HWY 81 E, LANCASTER, WI 53813
 PHONE: 608-723-6363 FAX: 608-723-6702

JOB NO: 13s064
 G:\HMP\T3NR3W\13
 H:\TIE\T3NR3W\60A

FIELDBOOK: TDSR
 DRAWN BY: AJ AUSTIN
 CREW: SW AUSTIN

GRANT COUNTY CERTIFIED LAND CORNER

CORNER NO. 60

CERTIFICATE:

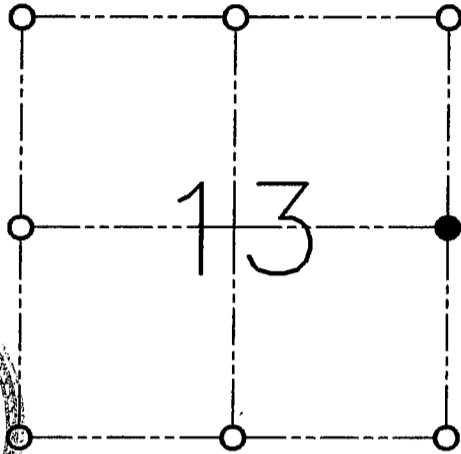
I, LARRY L. AUSTIN, DO HEREBY CERTIFY THAT ON TWENTIETH DAY OF FEBRUARY, 1998, I FOUND NO EVIDENCE OF THE EAST 1/4 CORNER OF SECTION 13, TOWN 3 NORTH, RANGE 3 WEST, OF THE FOURTH PRINCIPAL MERIDIAN, AND I RE-ESTABLISHED SAID CORNER ACCORDING TO THE WISCONSIN STATUTES AS SHOWN AND DESCRIBED HEREON.

DATED THIS TWENTIETH DAY OF FEBRUARY, 1998

Larry L. Austin
LARRY L. AUSTIN S-1903



SEAL



● = CORNER LOCATION

**EAST 1/4 OF SECTION 13
T 3 N R 3 W
TOWN OF POTOSI**

HISTORY OF ORIGINAL CORNER ESTABLISHMENT:

CORNER WAS SET IN 1832 BY L. LYON. IN 1883
J.C. SCOTT FOUND A STAKE WHICH WAS SET IN 1882.

DESCRIPTION OF CORNER EVIDENCE FOUND:

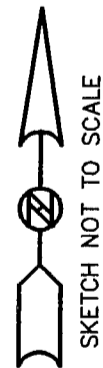
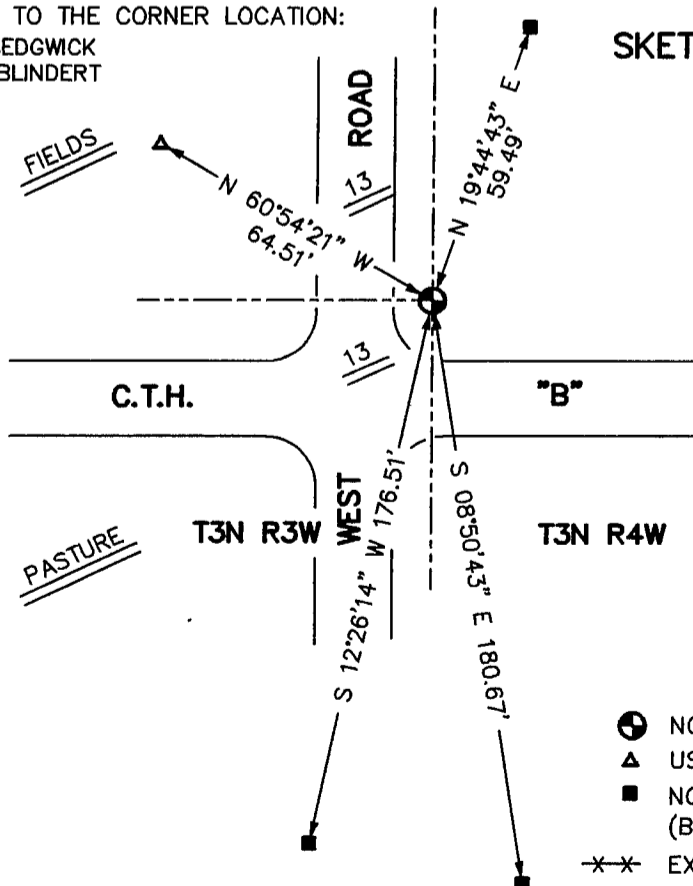
I SET THE CORNER BASED ON OCCUPATIONAL EVIDENCE FOUND OF THE
J.C. SCOTT SURVEY. THIS LOCATION FIT WELL WITH OCCUPIED CORNERS
NORTH AND SOUTH OF THE CORNER. VERIFIED THIS LOCATION USING E.D.M.
AND G.P.S. METHODS.

DESCRIPTION OF CORNER AND WITNESS MONUMENTS, REFERENCES AND ACCESSORIES USED TO PERPETUATE THE ORIGINAL OR RE-ESTABLISHED LOCATION OF THIS CORNER:

WITNESS TO THE CORNER LOCATION:

BOBBY SEDGWICK
SHELBY BLINDERT

SKETCH:



LEGEND

- NO. 10 X 30" REBAR SET
- ▲ USGS MARKER FOUND
- NO. 4 X 16" REBAR SET (BASE OF R.O.W.)
- x-x- EXISTING FENCE

GRANT COUNTY CERTIFIED LAND CORNER

CORNER NUMBER 54

CERTIFICATE:

I, Larry L. Austin, do hereby certify that on the 14th day of June, 2000, I found evidence of the West 1/4 corner of Section 18, Town 3 North, Range 2 West, of the 4th Principal Meridian, and I re-established said corner according to the Wisconsin statutes as shown and described hereon.

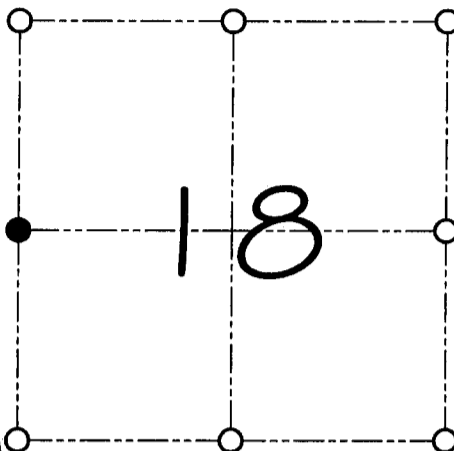
Dated this 13th day of October, 2000

Larry L. Austin
Larry L. Austin S-1903

Grant County Corr.

N 481693.2

E 832055.7



● = CORNER LOCATION

WEST 1/4 CORNER OF
SECTION 18, T 3 N R 2 W
TOWN OF HARRISON

HISTORY OF ORIGINAL CORNER ESTABLISHMENT:

Corner was never originally set. In 1882 J.C. Scott set the corner by measuring the whole line of Section 18.

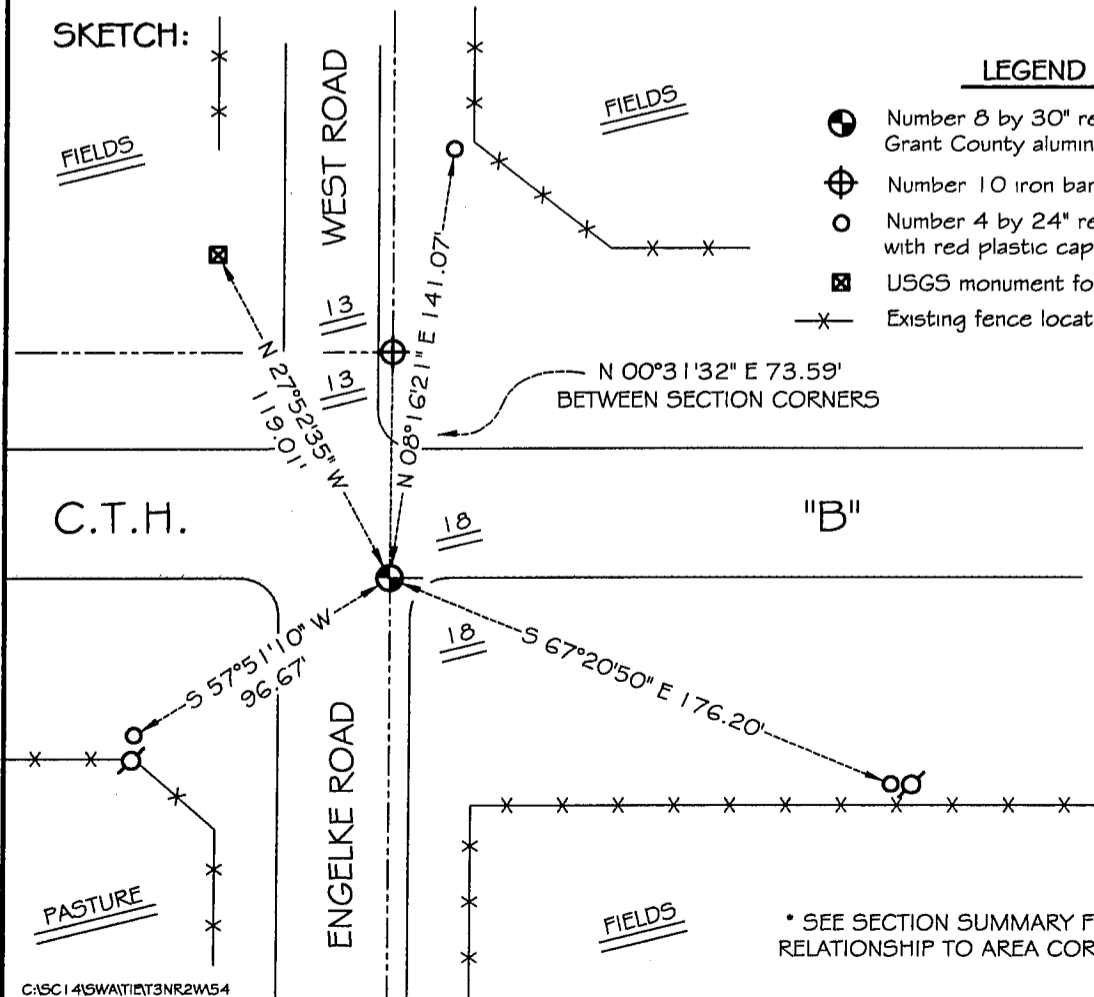
DESCRIPTION OF CORNER EVIDENCE FOUND:

I found the existing East 1/4 of Section 13 and set this corner at the proportional offset. Verified this location using E.D.M. & G.P.S. methods.

DESCRIPTION OF CORNER AND WITNESS MONUMENTS, references and accessories used to perpetuate the original or re-established location of this corner

WITNESS TO THE CORNER LOCATION: SHELBY BLINDERT & JERRY SPEILMAN

SKETCH:



LEGEND

- Number 8 by 30" rebar set with Grant County aluminum cap
- ⊕ Number 10 iron bar found
- Number 4 by 24" rebar set with red plastic cap
- ⊠ USGS monument found
- X- Existing fence location



* SEE SECTION SUMMARY FOR *
RELATIONSHIP TO AREA CORNERS

C:\SC14\SWAT\T3NR2W54