

GRANT COUNTY CERTIFIED LAND CORNER

CORNER NUMBER 41

CERTIFICATE:

I, Larry L. Austin, do hereby certify that on the 14th day of June, 2000, I found no evidence of the Northeast corner of Section 13, Town 3 North, Range 3 West, of the 4th Principal Meridian, and I re-established said corner according to the Wisconsin statutes as shown and described hereon.

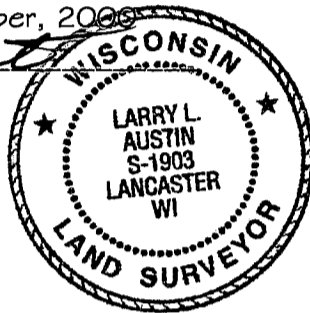
Dated this 13th day of October, 2000

Larry L. Austin S-1903

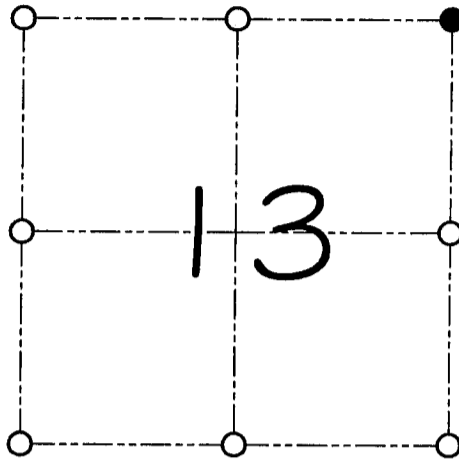
Grant County Cor.

N 484425.4

E 832048.8



SEAL



● = CORNER LOCATION

NORTHEAST 1/4 CORNER OF
SECTION 13, T 3 N R 3 W
TOWN OF POTOSI

HISTORY OF ORIGINAL CORNER ESTABLISHMENT:

Corner was originally set in 1832 by Lucius Lyon.
In 1882 J.C. Scott found the original corner.

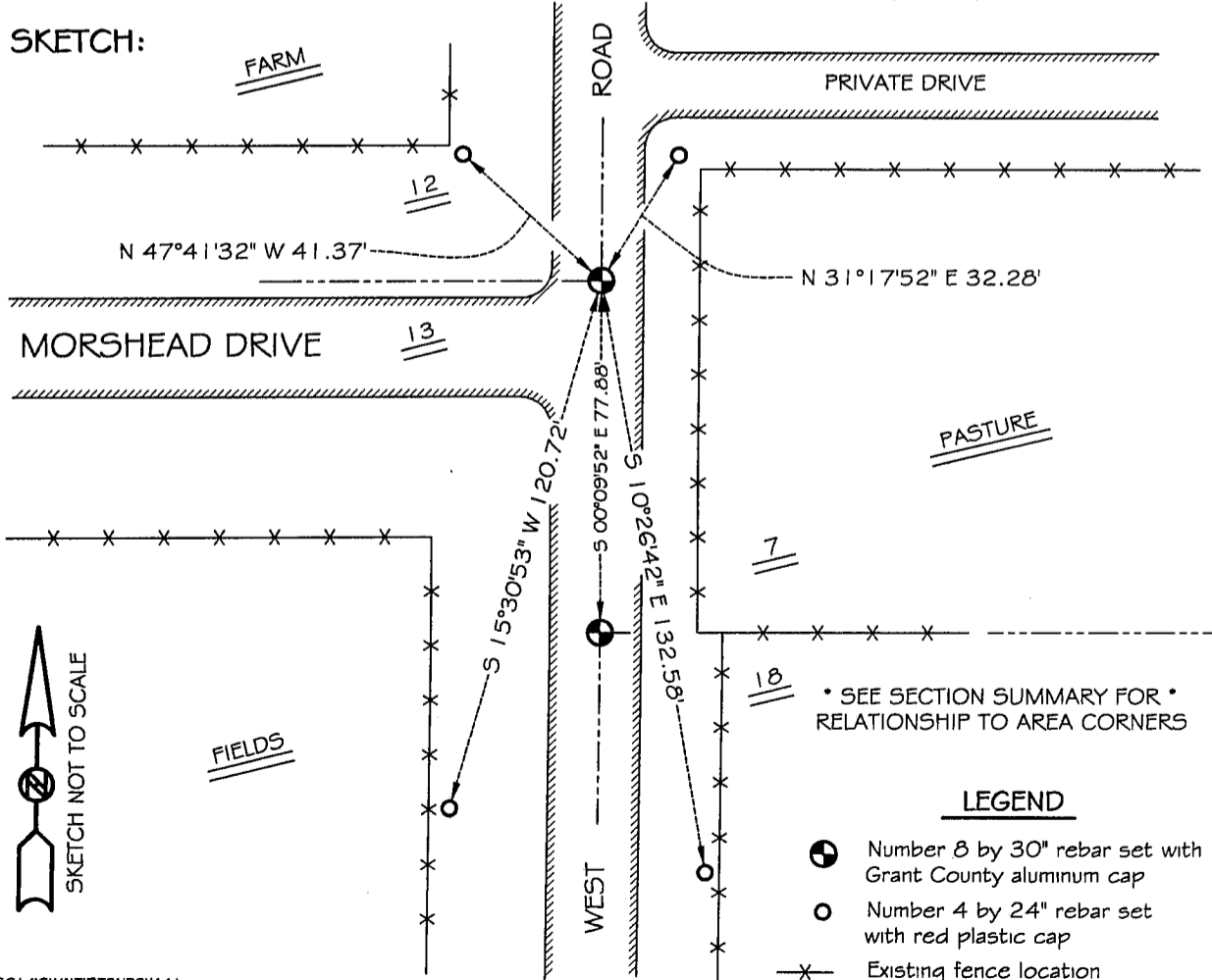
DESCRIPTION OF CORNER EVIDENCE FOUND:

I found no evidence of the original corner. I reset the corner at the recorded offset from the Northwest corner of Section 18. Verified this location using E.D.M. & G.P.S. methods.

DESCRIPTION OF CORNER AND WITNESS MONUMENTS, references and accessories used to perpetuate the original or re-established location of this corner

WITNESS TO THE CORNER LOCATION: SHELBY BLINDERT & JERRY SPEILMAN

SKETCH:



* SEE SECTION SUMMARY FOR *
RELATIONSHIP TO AREA CORNERS

LEGEND

- Number 8 by 30" rebar set with Grant County aluminum cap
- Number 4 by 24" rebar set with red plastic cap
- x— Existing fence location

GRANT COUNTY CERTIFIED LAND CORNER

CORNER NUMBER 53

CERTIFICATE:

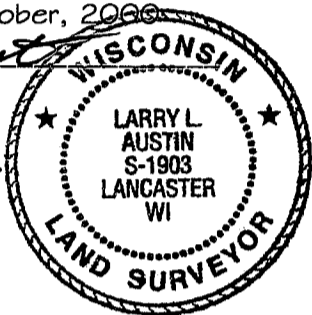
I, Larry L. Austin, do hereby certify that on the 14th day of June, 2000, I found evidence of the Northwest corner of Section 18, Town 3 North, Range 2 West, of the 4th Principal Meridian, and I re-established said corner according to the Wisconsin statutes as shown and described hereon.

Dated this 13th day of ~~October, 2000~~

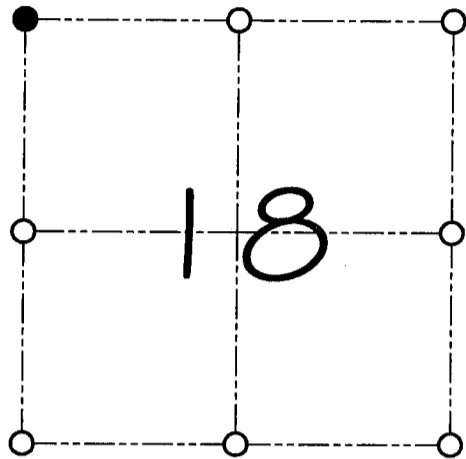
Larry L. Austin
Larry L. Austin S-1903

Grant County Clerk

N 484347.5
E 832048.9



SEAL



● = CORNER LOCATION

NORTHWEST CORNER OF
SECTION 18, T 3 N R 2 W
TOWN OF HARRISON

HISTORY OF ORIGINAL CORNER ESTABLISHMENT:

Corner was originally set in 1833 by Robert Clark.
In 1882 J.C. Scott tied to the corner and set new bearing trees.

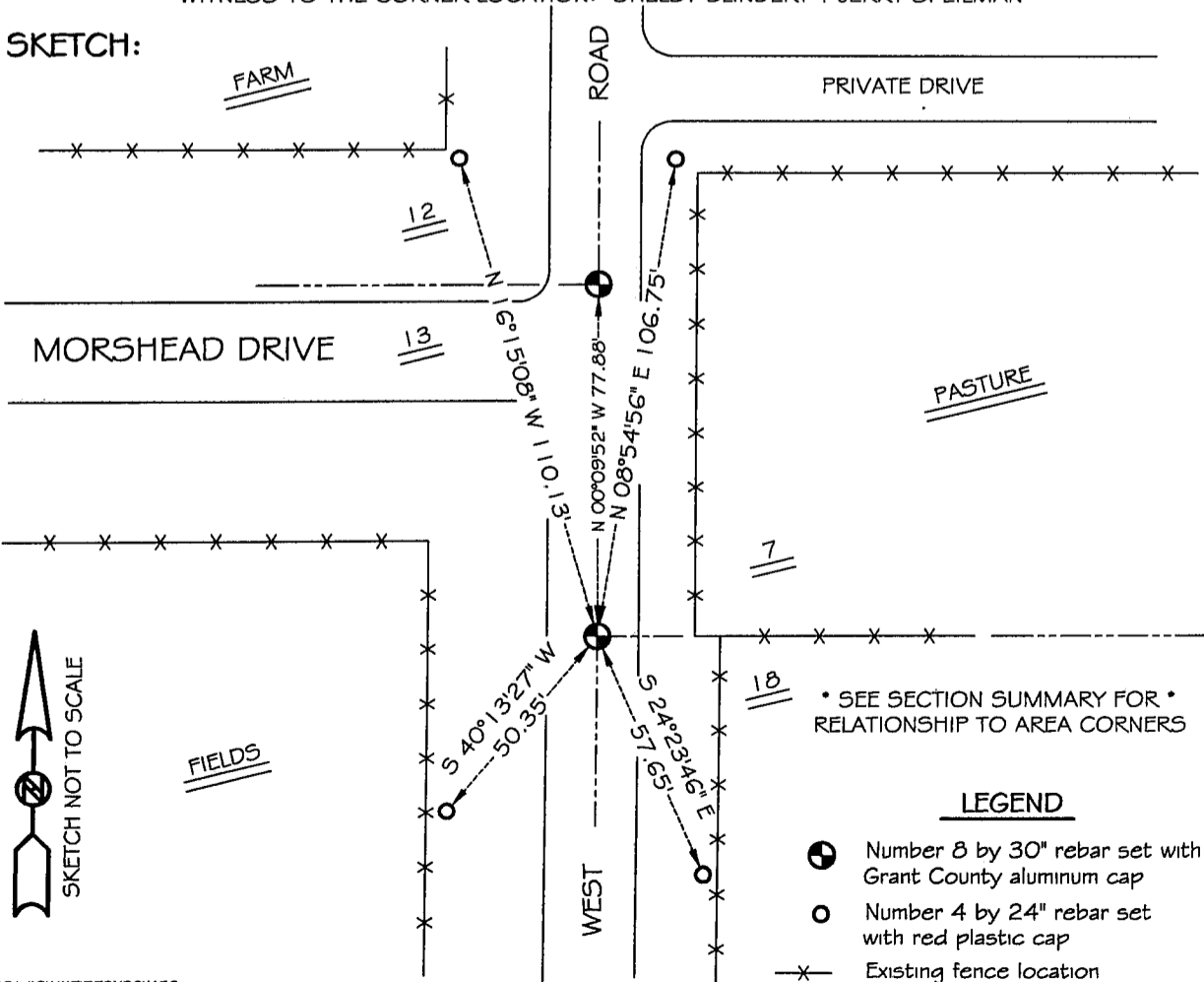
DESCRIPTION OF CORNER EVIDENCE FOUND:

I found no evidence of the original corner. I reset the corner from the occupation of road and fences. Verified this location using E.D.M. & G.P.S. methods.

DESCRIPTION OF CORNER AND WITNESS MONUMENTS, references and accessories used to perpetuate the original or re-established location of this corner

WITNESS TO THE CORNER LOCATION: SHELBY BLINDERT & JERRY SPEILMAN

SKETCH:



* SEE SECTION SUMMARY FOR *
RELATIONSHIP TO AREA CORNERS

LEGEND

- Number 8 by 30" rebar set with Grant County aluminum cap
- Number 4 by 24" rebar set with red plastic cap
- x— Existing fence location