

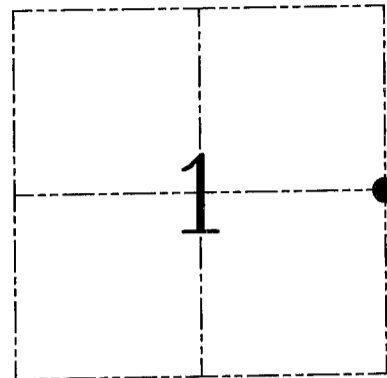
**U.S. PUBLIC LAND SURVEY MONUMENT RECORD – GRANT COUNTY, WI**  
**Section 1, Town 3 North Range 3 West, Town of Potosi**

CERTIFICATE

I, Larry L. Austin, do hereby certify that the corner location on this record was determined by me and/or under my direct supervision and that this U.S. public land survey monument record is correct and complete to the best of my knowledge and belief.

Dated this 21st day of February, 2005

*Larry L. Austin*  
 Larry L. Austin S-1903



● = CORNER LOCATION

HISTORY OF CORNER ESTABLISHMENT

Corner was originally set in 1832 by Lyon. In 1858 Overton measured to the corner. No other record of the corner was found.

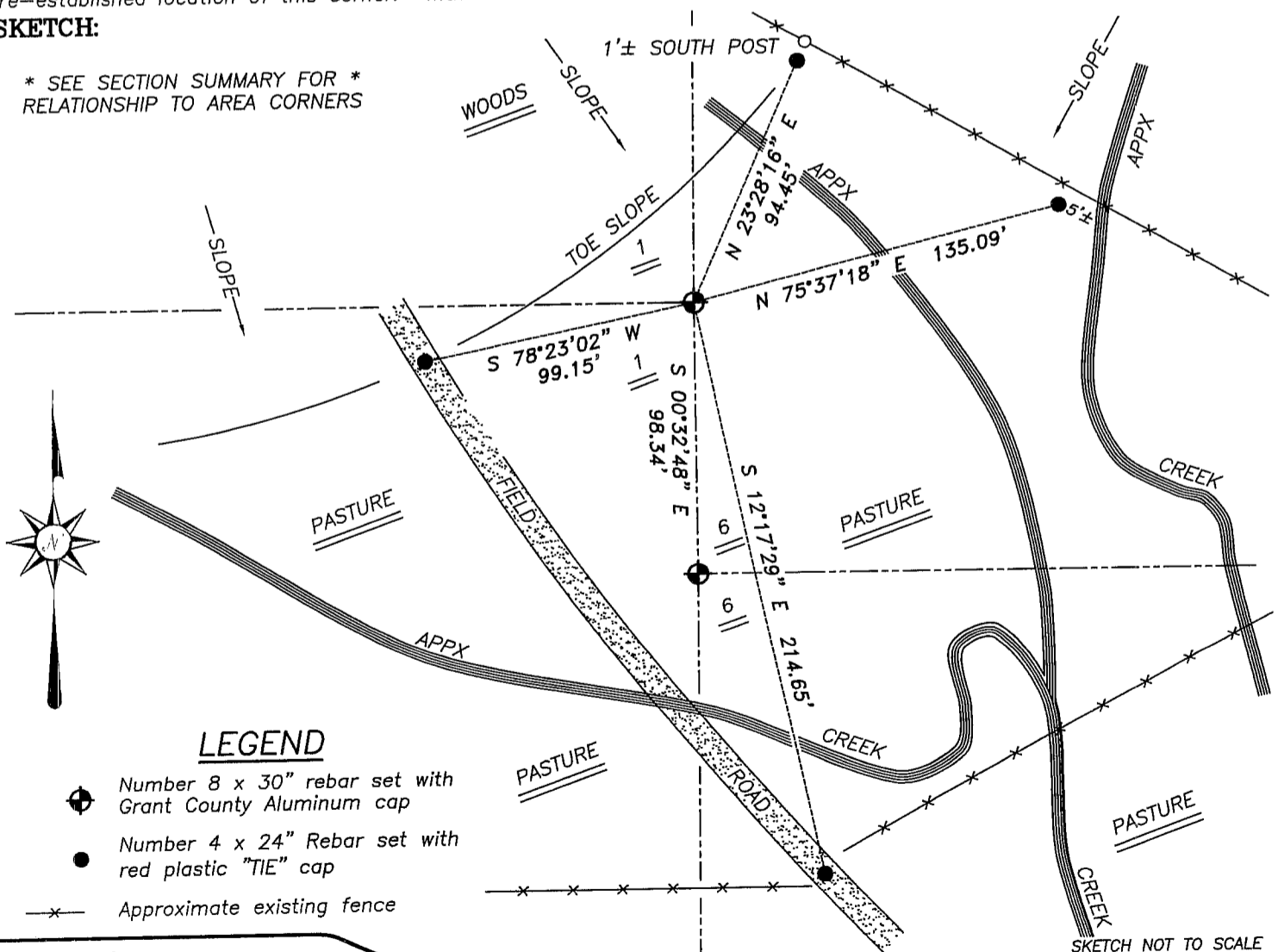
DESCRIPTION OF CORNER EVIDENCE FOUND

Corner was set proportionately between the Northeast and Southeast corners of Section 1. Verified this location using EDM & GPS methods.

DESCRIPTION OF CORNER AND WITNESS MONUMENTS, references and accessories used to perpetuate the original or re-established location of this corner. Witnesses to corner location Bobby Sedgwick & Shane Austin & Brad Hazen

**SKETCH:**

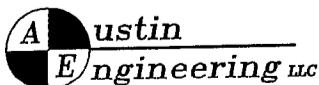
\* SEE SECTION SUMMARY FOR \*  
 RELATIONSHIP TO AREA CORNERS



**LEGEND**

- Number 8 x 30" rebar set with Grant County Aluminum cap
- Number 4 x 24" Rebar set with red plastic "TIE" cap
- x— Approximate existing fence

SKETCH NOT TO SCALE



4211 HWY 81 E, LANCASTER, WI 53813  
 PHONE 608-723-6363 FAX 608-723-6702

JOB NUMBER 04S318  
 FIELDBOOK: TDSR, 2417  
 G:\T3NR2W\06  
 H:\TIE\T3NR3W\20

DRAWN BY: SW AUSTIN  
 APPROVED: LL AUSTIN

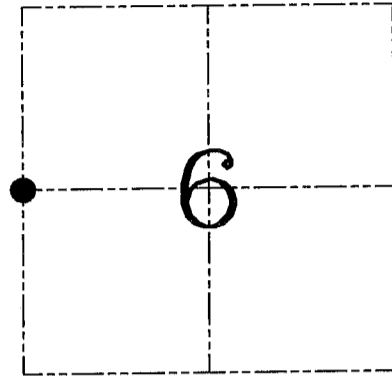
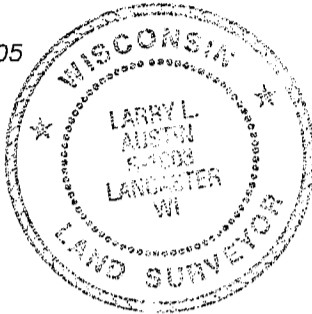
**U.S. PUBLIC LAND SURVEY MONUMENT RECORD – GRANT COUNTY, WI**  
**Section 6, Town 3 North Range 2 West, Town of Harrison**

CERTIFICATE

I, Larry L. Austin, do hereby certify that the corner location on this record was determined by me and/or under my direct supervision and that this U.S. public land survey monument record is correct and complete to the best of my knowledge and belief.

Dated this 21st day of February, 2005

*Larry L. Austin*  
 Larry L. Austin S-1903



● = CORNER LOCATION

HISTORY OF CORNER ESTABLISHMENT

Corner was never originally set. In 1858 Overton measured to the corner. In 1904 Sampson measured to the corner.

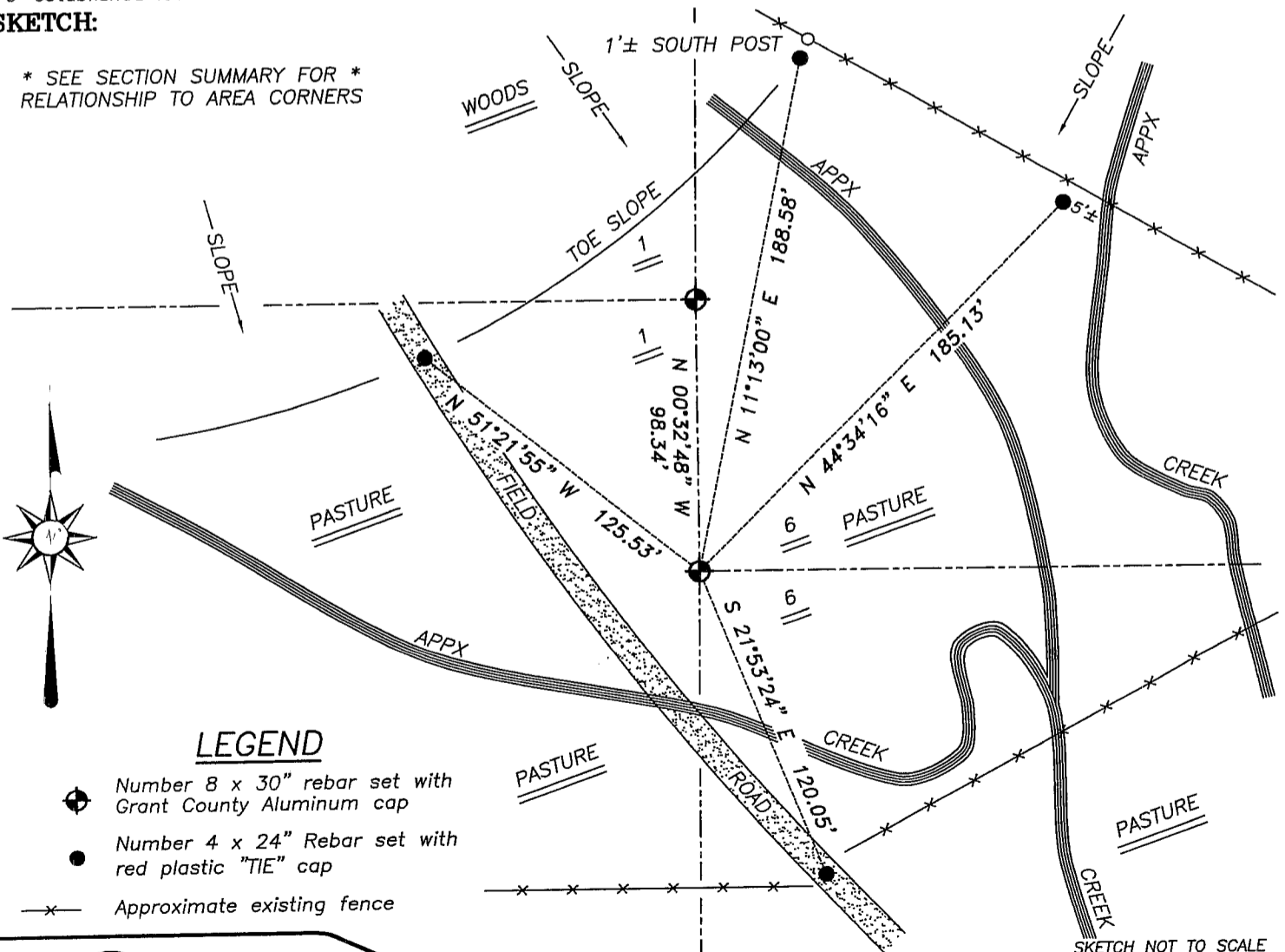
DESCRIPTION OF CORNER EVIDENCE FOUND

I set the corner at the recorded offset from the East 1/4 of Section 1. Verified this location using EDM & GPS methods.

DESCRIPTION OF CORNER AND WITNESS MONUMENTS, references and accessories used to perpetuate the original or re-established location of this corner. Witnesses to corner location Bobby Sedgwick & Shane Austin & Brad Hazen

**SKETCH:**

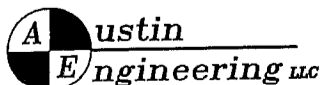
\* SEE SECTION SUMMARY FOR \*  
 \* RELATIONSHIP TO AREA CORNERS \*



**LEGEND**

- Number 8 x 30" rebar set with Grant County Aluminum cap
- Number 4 x 24" Rebar set with red plastic "TIE" cap
- x— Approximate existing fence

SKETCH NOT TO SCALE



4211 HWY 81 E, LANCASTER, WI 53813  
 PHONE 608-723-6363 FAX 608-723-6702

JOB NUMBER 04S318  
 FIELDBOOK: TDSR, 2417  
 G: T3NR2W\06  
 H: TIE\T3NR2W\14

DRAWN BY: SW AUSTIN  
 APPROVED: LL AUSTIN