

**U.S. PUBLIC LAND SURVEY MONUMENT RECORD – GRANT COUNTY, WI**

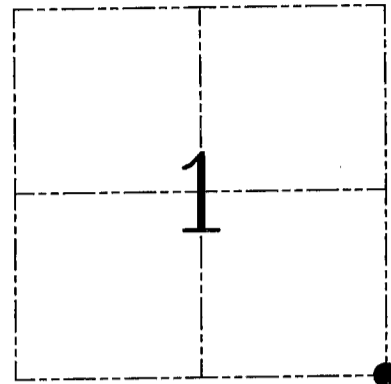
**Section 1, Town 3 North Range 3 West, Town of Potosi**

CERTIFICATE

I, Larry L. Austin, do hereby certify that the corner location on this record was determined by me and/or under my direct supervision and that this U.S. public land survey monument record is correct and complete to the best of my knowledge and belief.

Dated this 21st day of February, 2005

*Larry L. Austin*  
Larry L. Austin S-1903



● = CORNER LOCATION

HISTORY OF CORNER ESTABLISHMENT

Corner was originally set in 1832 by Lyon. In 1858 Overton measured to the corner while working in this Section and in Section 6, T3N R2W. No other record of the corner was found.

DESCRIPTION OF CORNER EVIDENCE FOUND

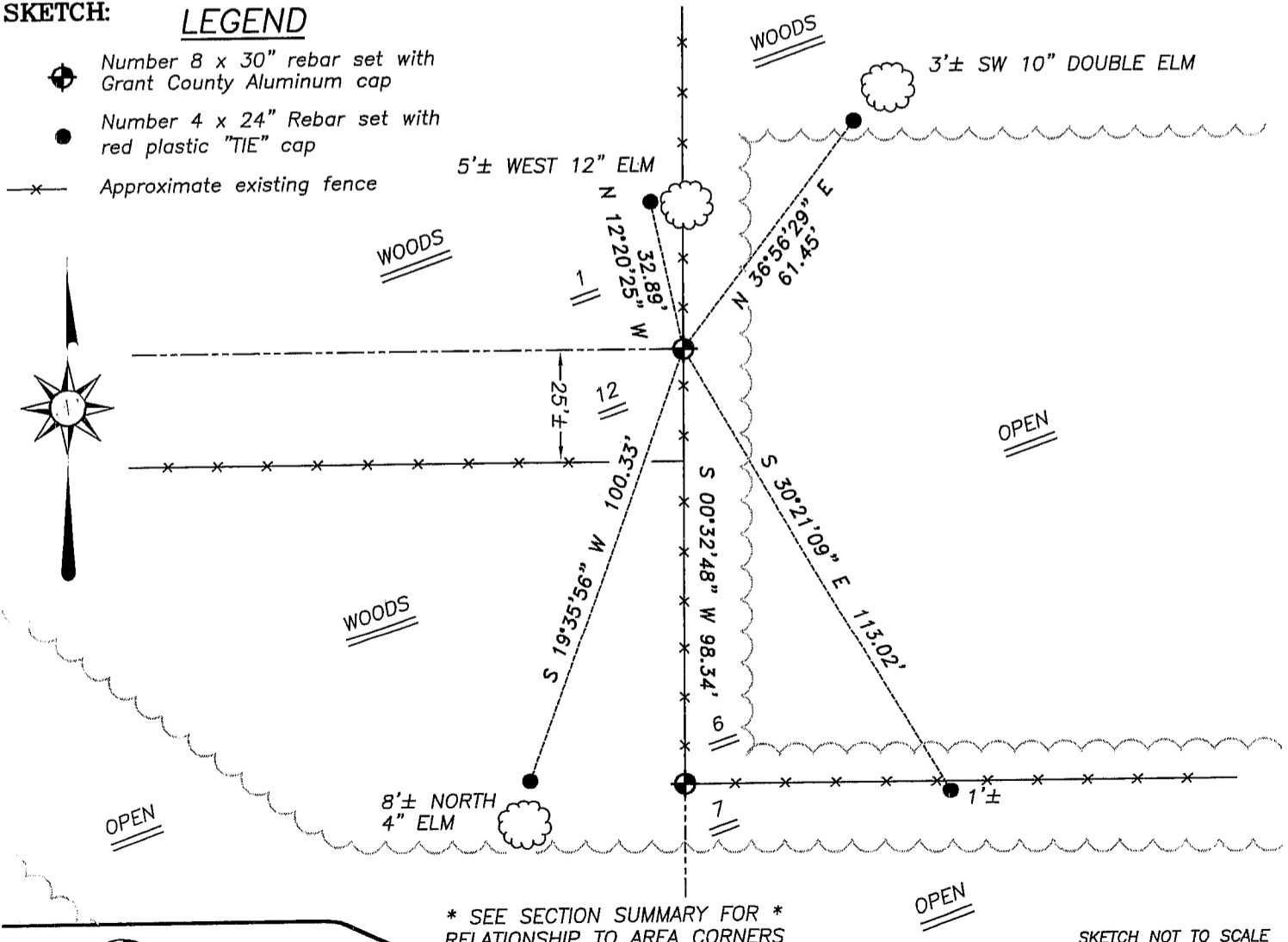
I set the corner at the recorded offset from the Southwest corner of Section 6. Verified this location using EDM & GPS methods.

DESCRIPTION OF CORNER AND WITNESS MONUMENTS, references and accessories used to perpetuate the original or re-established location of this corner. Witnesses to corner location Bobby Sedgwick & Shane Austin & Brad Digman

**SKETCH:**

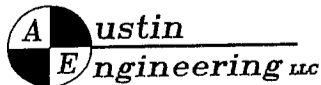
LEGEND

- ⊕ Number 8 x 30" rebar set with Grant County Aluminum cap
- Number 4 x 24" Rebar set with red plastic "TIE" cap
- x— Approximate existing fence



\* SEE SECTION SUMMARY FOR \*  
RELATIONSHIP TO AREA CORNERS

SKETCH NOT TO SCALE



4211 HWY 81 E, LANCASTER, WI 53813  
PHONE 608-723-6363 FAX 608-723-6702

JOB NUMBER 04S318  
FIELDBOOK: TDSR, 2417  
G:\T3NR2W\06  
H:\TIE\T3NR3W\21

DRAWN BY: SW AUSTIN  
APPROVED: LL AUSTIN

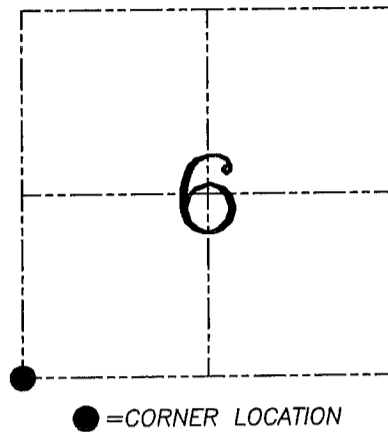
**U.S. PUBLIC LAND SURVEY MONUMENT RECORD – GRANT COUNTY, WI**  
**Section 6, Town 3 North Range 2 West, Town of Harrison**

CERTIFICATE

I, Larry L. Austin, do hereby certify that the corner location on this record was determined by me and/or under my direct supervision and that this U.S. public land survey monument record is correct and complete to the best of my knowledge and belief.

Dated this 30th day of December, 2005

*Larry L. Austin*  
 Larry L. Austin S-1903



HISTORY OF CORNER ESTABLISHMENT

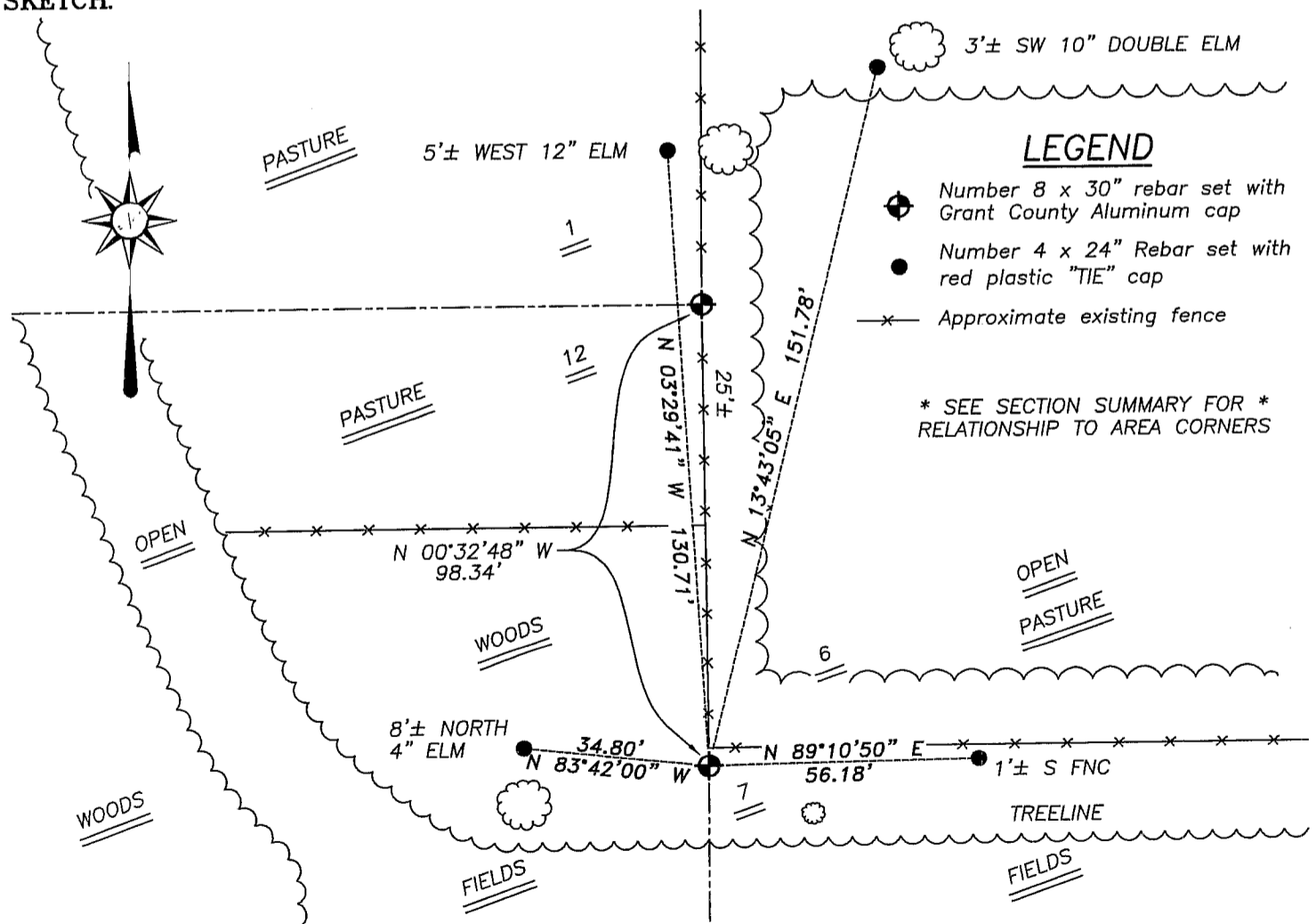
Corner was originally set in 1832 by Clark. In 1858 Overton tied to the corner. No other record of the corner was found.

DESCRIPTION OF CORNER EVIDENCE FOUND

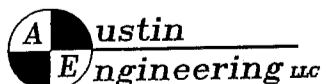
I found an occupied fence corner and accepted it's location after an EDM & GPS traverse of the area.

DESCRIPTION OF CORNER AND WITNESS MONUMENTS, references and accessories used to perpetuate the original or re-established location of this corner. Witnesses to corner location Bobby Sedgwick & Shane Austin & Brad Digman

**SKETCH:**



SKETCH NOT TO SCALE



4211 HWY 81 E, LANCASTER, WI 53813  
 PHONE 608-723-6363 FAX 608-723-6702

JOB NUMBER 04S318  
 FIELDBOOK: TDSR, 2417  
 G:\T3NR2W\06  
 H:\TIE\T3NR2W\33

DRAWN BY: ML DIGMAN  
 APPROVED: LL AUSTIN