

**U.S. PUBLIC LAND SURVEY MONUMENT RECORD - GRANT COUNTY, WI**

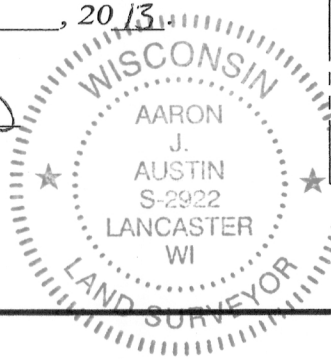
Section 36, Town 3 North Range 2 West, Town of Harrison

**CERTIFICATE:**

I, Aaron J. Austin, do hereby certify that the corner location on this record was determined by me and/or under my direct supervision and that this U.S. Public Land Survey Monument Record is correct and complete to the best of my knowledge and belief.

Dated this 18 th day of July, 2013.

*Aaron J. Austin*  
 Aaron J. Austin, S-2922



● = CORNER LOCATION

HISTORY OF CORNER ESTABLISHMENT:

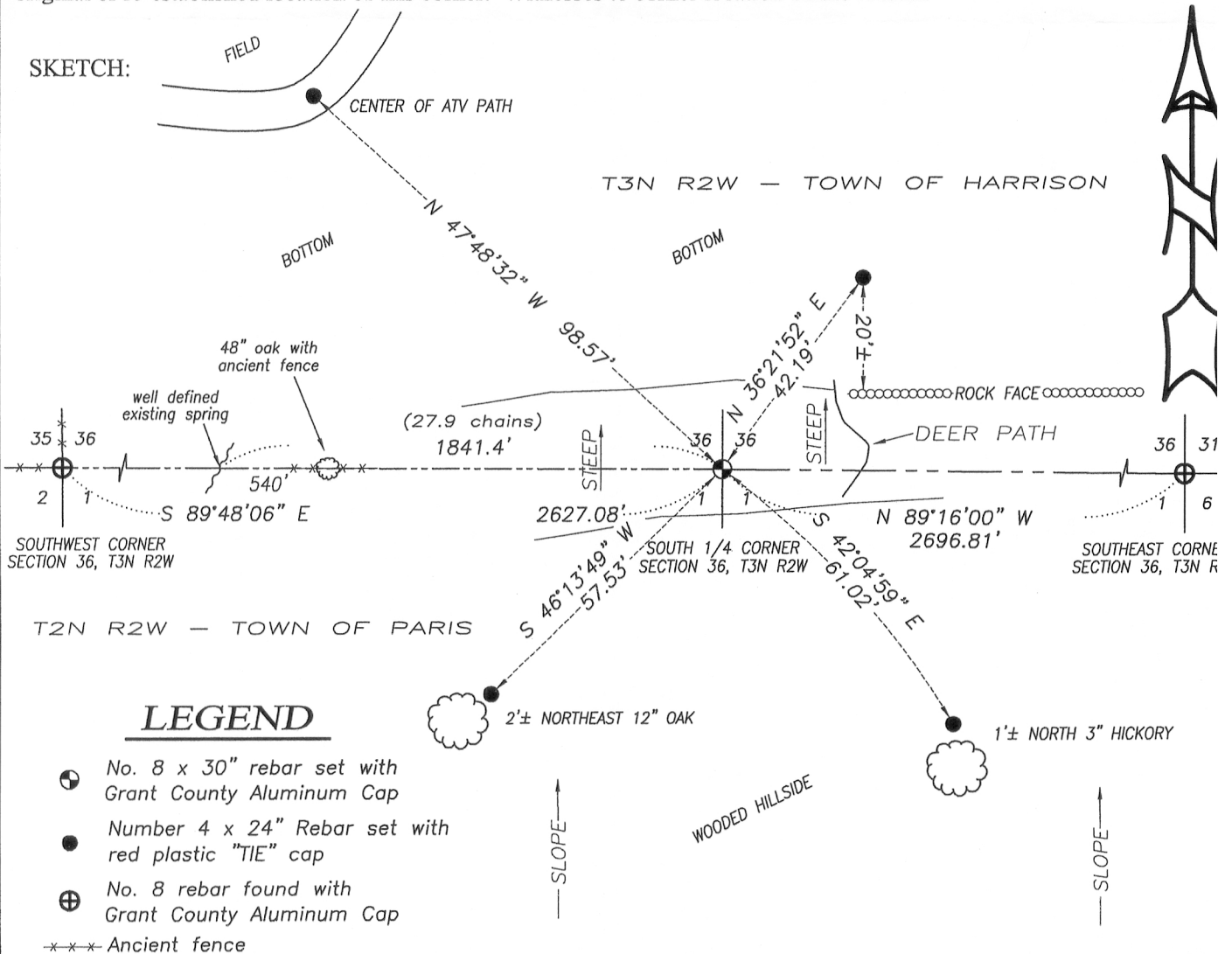
Corner originally set in 1832 by Lucius Lyon.  
 No other record found for this corner.

DESCRIPTION OF CORNER EVIDENCE FOUND:

No evidence of this corner was located. This corner was retraced based upon a projection from the Southwest corner of Section 36 and ancient fence which was overgrown through a 48" dia. oak tree located at the Southeast corner of the SW 1/4 of the SW 1/4 at the record distance of a call to a creek in the original notes.

DESCRIPTION OF CORNER AND WITNESS MONUMENTS, references and accessories used to perpetuate the original or re-established location of this corner. Witnesses to corner location Shane Austin.

SKETCH:



**Austin Engineering LLC**  
 austinengineeringllc.com  
 4211 HWY 81 E, LANCASTER, WI 53813  
 PHONE: 608-723-6363 FAX: 608-723-6702

JOB NO: 13s104  
 G:\HMP\T3NR2W\36  
 H:\TIE\T3NR2W\122

SKETCH NOT TO SCALE

FIELDBOOK: TDSR  
 DRAWN BY: AJ AUSTIN  
 CREW: SW AUSTIN