

GRANT COUNTY CERTIFIED LAND CORNER

CERTIFICATE:

I, LARRY L. AUSTIN, DO HEREBY CERTIFY THAT ON EIGHTH DAY OF MAY, 1999, I FOUND MONUMENTED EVIDENCE OF THE NORTHEAST CORNER SECTION 1, TOWN 2 NORTH, RANGE 2 WEST, OF THE FOURTH PRINCIPAL MERIDIAN, AND I RE-ESTABLISHED SAID CORNER ACCORDING TO THE WISCONSIN STATUTES AS SHOWN AND DESCRIBED HEREON.

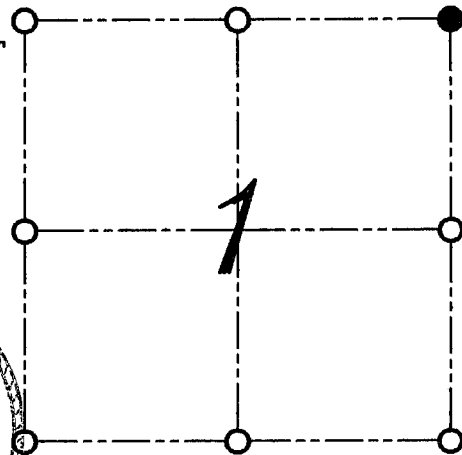
DATED THIS TWENTY-SECOND DAY OF MAY, 1999

Larry L. Austin
LARRY L. AUSTIN S-1903



SEAL

CORNER NUMBER 1



● = CORNER LOCATION
NORTHEAST CORNER OF
SECTION 1, T 2 N R 2 W
TOWN OF PARIS

HISTORY OF ORIGINAL CORNER ESTABLISHMENT:

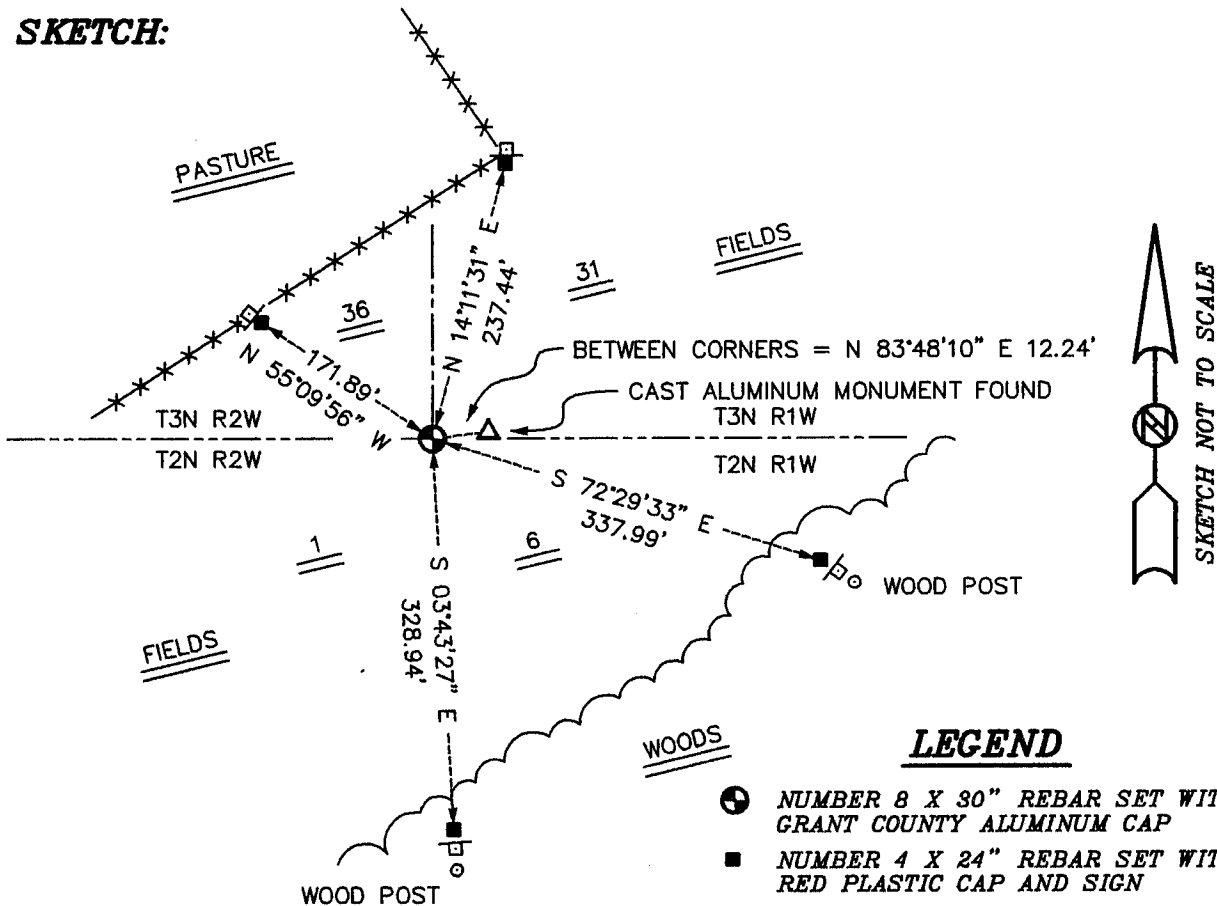
CORNER WAS SET IN 1832 BY LUCIUS LYON. IN 1985 PAUL CHAFER SET A CAST ALUMINUM MONUMENT AT THIS LOCATION.

DESCRIPTION OF CORNER EVIDENCE FOUND:

I FOUND THE CAST ALUMINUM MONUMENT TO BE SET INACCURATELY. I RESET THE CORNER ACCORDING TO THE SECTION SUMMARY BY PAUL CHAFER. VERIFIED THIS LOCATION USING E.D.M. AND G.P.S. METHODS.

DESCRIPTION OF CORNER AND WITNESS MONUMENTS, REFERENCES AND ACCESSORIES USED TO PERPETUATE THE ORIGINAL OR RE-ESTABLISHED LOCATION OF THIS CORNER:
WITNESS TO THE CORNER LOCATION: BOBBY SEDGWICK ; SHELBY BLINDERT

SKETCH:



LEGEND

- NUMBER 8 X 30" REBAR SET WITH GRANT COUNTY ALUMINUM CAP
- NUMBER 4 X 24" REBAR SET WITH RED PLASTIC CAP AND SIGN
- *— EXISTING FENCE LOCATION
- △ "D.O.T. SURVEY MARKER NEARBY" SIGN SET

GRANT COUNTY CLERK
RECEIVED

APR 26 1985

RG-7150-11A (9/1/66)

GPO 803-494

CERTIFIED LAND CORNER RESTORATION

State of Wisconsin }
County of Grant } ss.

State Plane Coordinates
1,853,850.072 x
248,976.953 y

I Paul W. Chafer, do hereby certify that on the 7th day of December, 1984, I found evidence of the Northeast corner of Section 1 Township 2 North, Range 2 West, Fourth Principal Meridian, as described hereon; and that from this evidence I established a new monument and accessories as described hereon to perpetuate the original location of this corner:

Description of original monument and accessories and subsequent restorations:

Government survey of township was done in 1832-33 by Lucius Lyon.

T 3 N R 1 W

70.50 to little platt river 1 chain wide crs South

80.00 set post

Elm 30 bears N15W 115; Burr Oak 18 S56W 195

T 2 N R 2 W

70.71 to little platt river 50 lks wide crs West

80.00 Set post for town corners in bottom made by bend in creek

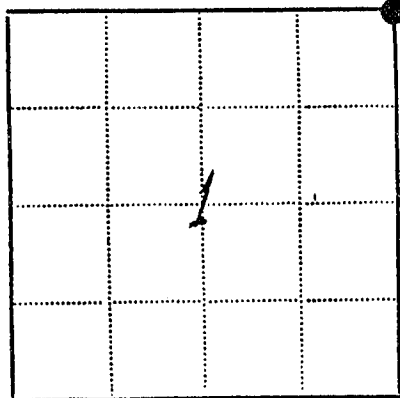
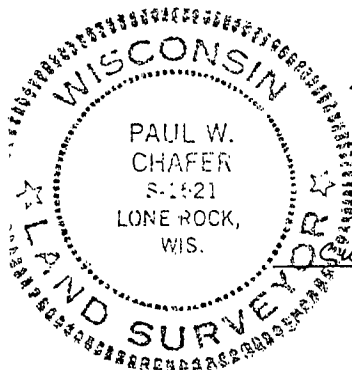
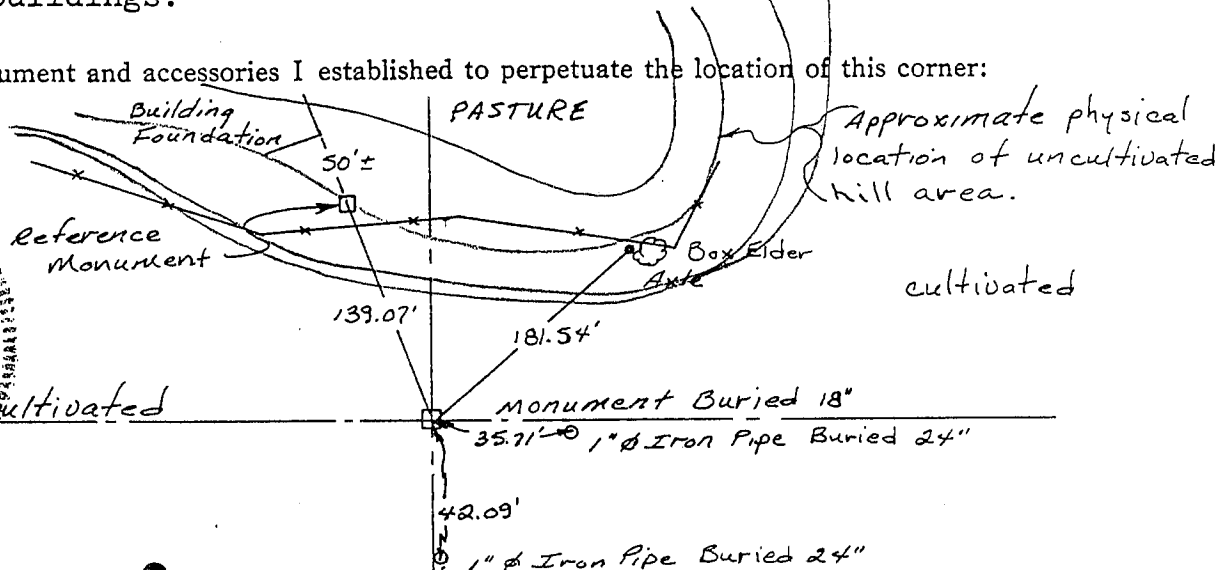
This was the last recorded information of the corner being monumented. No subsequent surveys could be found which referred to this corner.

Description of corner evidence found:

Corner was established by intersecting fences at E 1/4 Corner/SE Corner of Sec. 1 T2N R2W and an existing iron pipe and fence line in the NW 1/4 of Sec. 6 T2N R1W. A 36" Ø Burr Oak Stump with fence wire ingrown also was projected East. Distance from bank recorded in original notes within 1.0'

Corner located in a cultivated area, no evidence exists. An old building foundation exists in the SE 1/4 of Sec. 36 T3N R2W and evidence of an access road to said buildings.

Description of monument and accessories I established to perpetuate the location of this corner:



● - Corner monument restored
□ -

Resident witnesses Terry L. Cornell

Dated at Richland Center, Wisconsin, this 10 day of December 1984

Signature Paul W. Chafer Title R.L.S.
(County Surveyor, Registered Land Surveyor, or other duly authorized official)

Surveyors Registration No. S-1521

Office of _____ County of _____

I hereby certify that the within instrument was filed in this office for record on the _____ day of _____ 19____, and was filed in Book No. _____ Page No. _____ of County Records.

Signature _____ Title _____

Township 2 North, Range 2 West, Section 1, Index No. _____, Page No. _____