

GRANT COUNTY CERTIFIED LAND CORNER

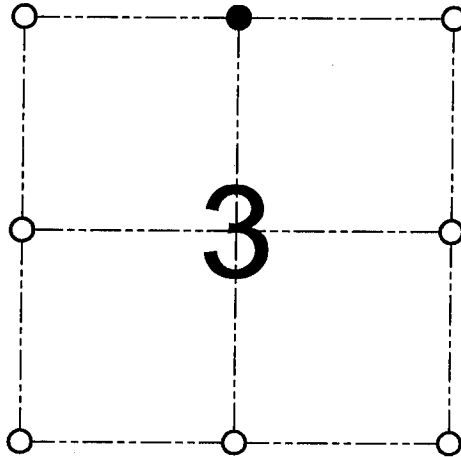
CORNER NUMBER 06

CERTIFICATE:

I, Larry L. Austin, do hereby certify that on the 24th day of October, 2000, I found evidence of the North 1/4 corner of Section 03, Town 2 North, Range 2 West, of the 4th Principal Meridian, and I re-established said corner according to the Wisconsin statutes as shown and described hereon.

Dated this 25th day of October, 2000

Larry L. Austin
Larry L. Austin S-1903



● = CORNER LOCATION

NORTH 1/4 CORNER OF SECTION 3, T 2'N R 2'W TOWN OF PARIS

Grant County Cook.
N 463202.6
E 850661.7

HISTORY OF ORIGINAL CORNER ESTABLISHMENT:

Corner was never originally set. In 1988 Douglas Malliet set a #6 iron bar at this location.

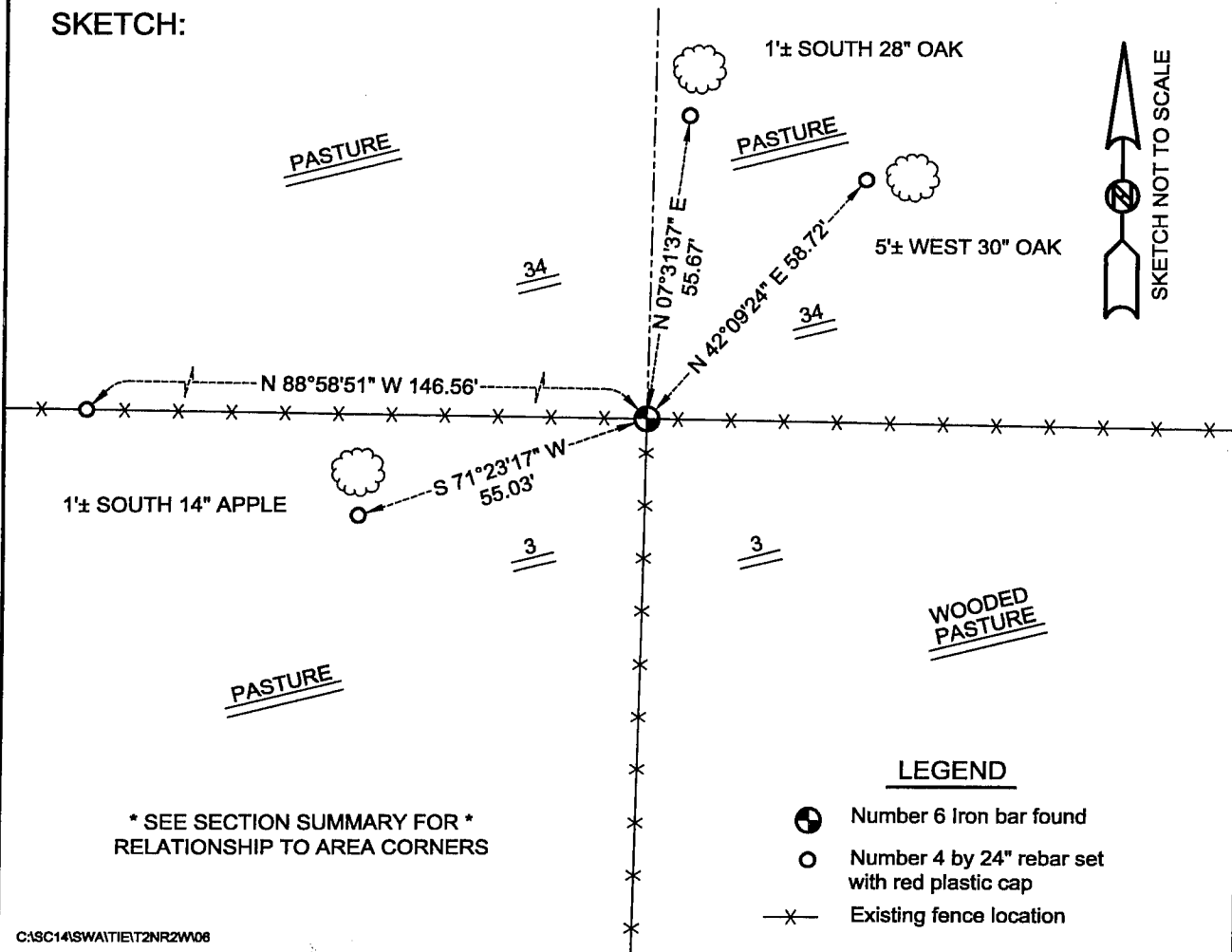
DESCRIPTION OF CORNER EVIDENCE FOUND:

I found and accepted the #6 iron bar at this location. Verified this location using E.D.M. & G.P.S. methods.

DESCRIPTION OF CORNER AND WITNESS MONUMENTS, references and accessories used to perpetuate the original or re-established location of this corner

WITNESS TO THE CORNER LOCATION: SHANE AUSTIN & TIM FAUVER

SKETCH:



* SEE SECTION SUMMARY FOR *
RELATIONSHIP TO AREA CORNERS

LEGEND

- Number 6 Iron bar found
- Number 4 by 24" rebar set with red plastic cap
- x— Existing fence location