

GRANT COUNTY CERTIFIED LAND CORNER

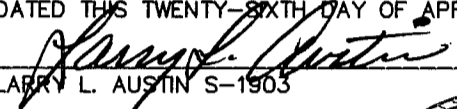
CORNER NO. 36

CERTIFICATE:

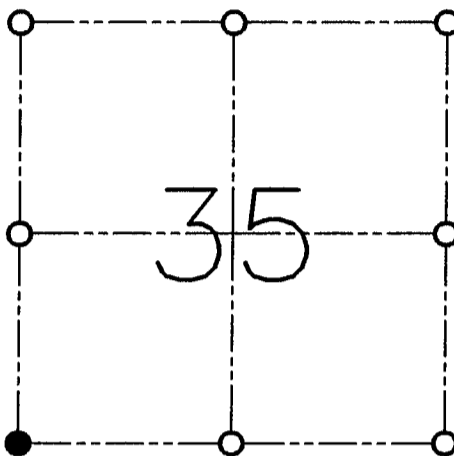
I, LARRY L. AUSTIN, DO HEREBY CERTIFY THAT ON TWELFTH DAY OF APRIL, 1999, I FOUND OCCUPATIONAL EVIDENCE OF THE SOUTHWEST CORNER SECTION 35, TOWN 3 NORTH, RANGE 2 WEST, OF THE FOURTH PRINCIPAL MERIDIAN, AND I RE-ESTABLISHED SAID CORNER ACCORDING TO THE WISCONSIN STATUTES AS SHOWN AND DESCRIBED HEREON.

DATED THIS TWENTY-SIXTH DAY OF APRIL, 1999

LARRY L. AUSTIN S-1903




SEAL



● = CORNER LOCATION

**SOUTHWEST CORNER
SECTION 35, T 3 N R 2 W
TOWN OF HARRISON**

HISTORY OF ORIGINAL CORNER ESTABLISHMENT:

CORNER WAS SET IN 1832 BY LUCIUS LYON. GEO STUNTZ
WAS AT THE CORNER IN 1848.

DESCRIPTION OF CORNER EVIDENCE FOUND:

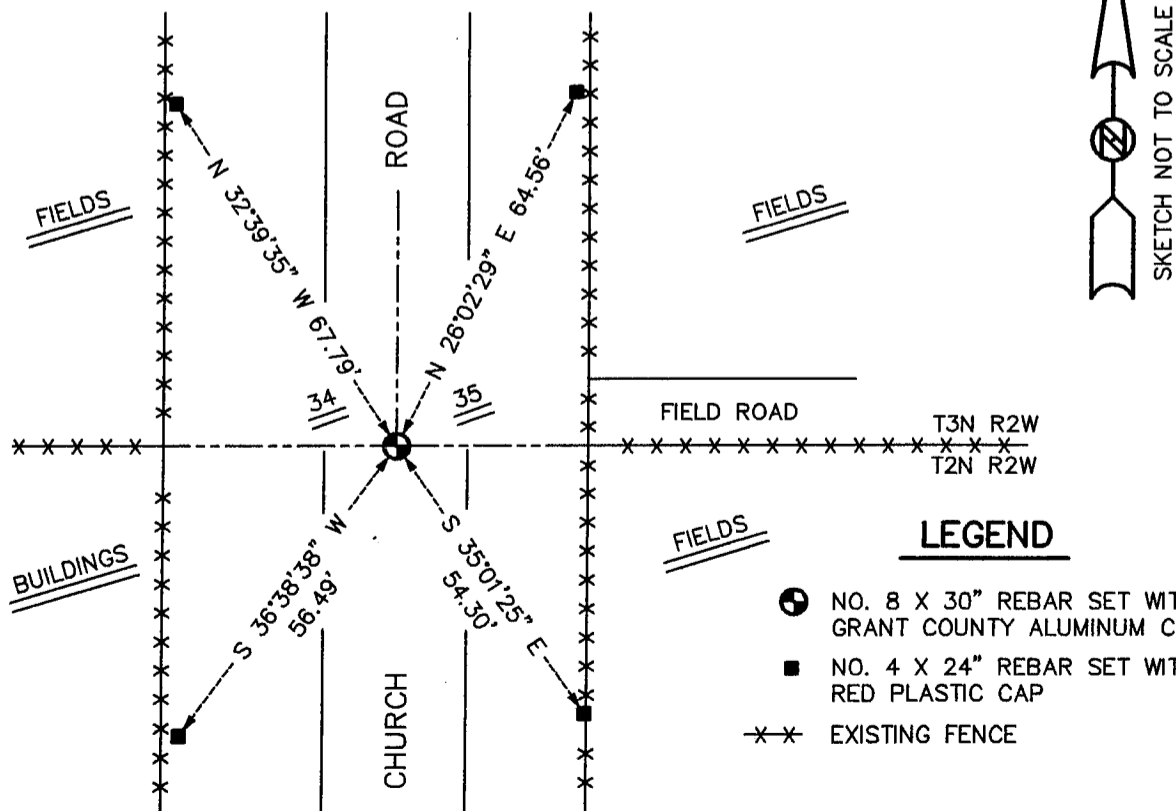
I SET THE CORNER BASED ON OCCUPATIONAL EVIDENCE. VERIFIED
THIS LOCATION USING E.D.M. AND G.P.S. METHODS.

DESCRIPTION OF CORNER AND WITNESS MONUMENTS, REFERENCES AND ACCESSORIES USED TO PERPETUATE THE ORIGINAL OR RE-ESTABLISHED LOCATION OF THIS CORNER:

WITNESS TO THE CORNER LOCATION:

BOBBY SEDGWICK
SHELBY BLINDERT

SKETCH:



LEGEND

- NO. 8 X 30" REBAR SET WITH GRANT COUNTY ALUMINUM CAP
- NO. 4 X 24" REBAR SET WITH RED PLASTIC CAP
- xx EXISTING FENCE