

SEP 2 1999

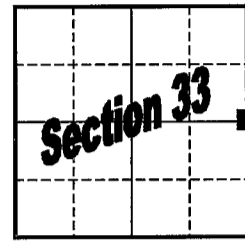
GRANT COUNTY U.S. PUBLIC LAND SURVEY MONUMENT RECORD

Section Corner common to Sections 33 & 34

T 3 N, R 2 W, Town of Harrison

Type of monument P.K. Nail

Location indicated on sketch - ■



T 3 N, R 2 W

Describe and record evidence, monument evidence, occupational evidence, testimonial evidence or any other material evidence you considered, and whether the monument was found or placed.

Re-established corner location from occupational evidence and survey records in the interior of Section 33.

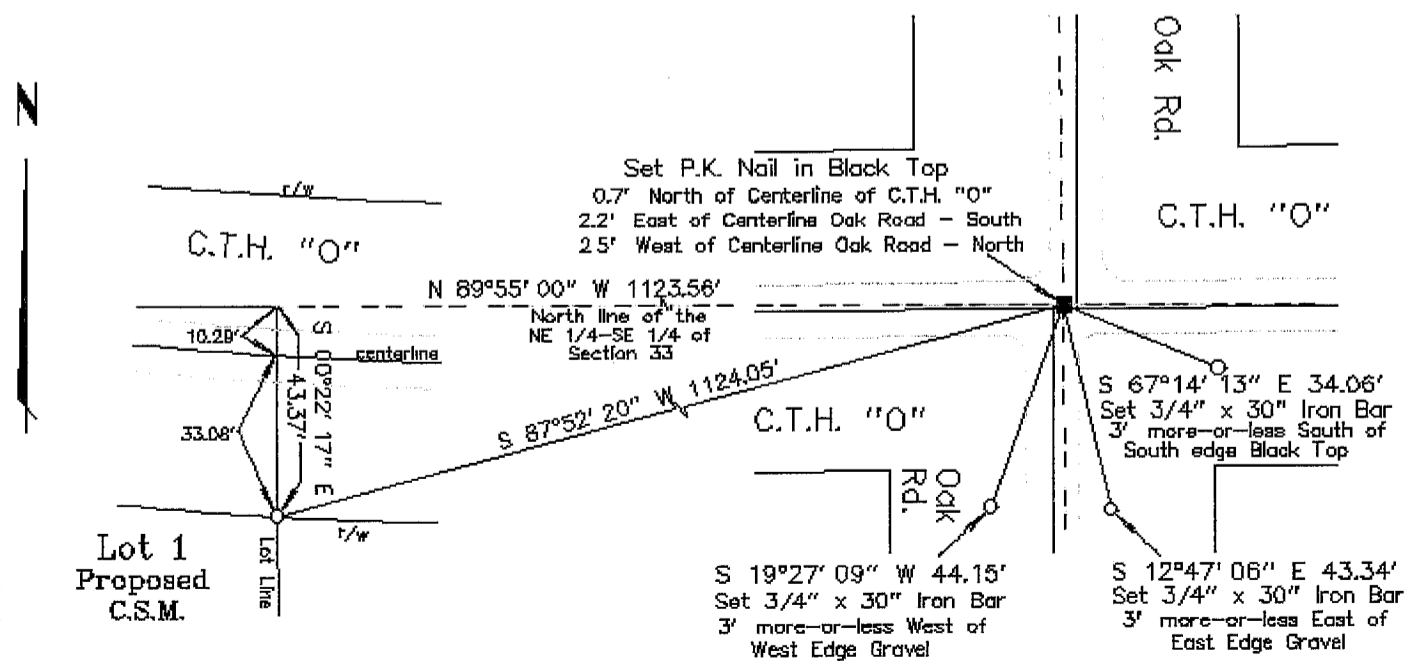
Determined North-South position using an existing 3/4" iron bar at the West one-quarter corner of Section 33 and extending East through location of the East-West one-quarter line as represented on a survey by Laurence E. Schmit as recorded at U-34 of Grant County Survey records. The resulting location being in agreement with an existing 3/4" iron bar at the Southeast corner of Section 33 and occupational evidence along the South line of the NE 1/4 of the SE 1/4 of Section 33.

Determined East-West location using existing 3/4" iron bars found at the North and South one-quarter corners of Section 33 and occupational evidence along the West line of the NE 1/4 of the SE 1/4 of Section 33. Doubled East for the distance measured from said one-quarter line to said occupation.

Set P.K. Nail in surface of County Trunk Highway "O" and made ties as shown below.

Grant County Coordinates : N=465843.889 E=847993.150

Show a plan view drawing depicting the relevant monuments, providing reference ties to at least four witness monuments. Describe witness monuments. Show relationship to occupation.



Describe any material discrepancy between the location of the corner as restored or reestablished and the location of that corner as previously restored or reestablished by distance and direction. Show the discrepancy on the plan view drawing. Show the distances between the corner as restored or reestablished, and (1) the corner as previously restored or reestablished – and (2) to at least two of the witness monuments shown on the previous drawing.

N/A

Was the corner restored through acceptance of (1) an obliterated evidence location, (2) a found perpetuated location, or (3) an existent corner location.

(1) an obliterated evidence location


Was the corner reestablished through lost corner proportionate methods? If so, show the method including the directions to other public land survey corners used as evidence or used for proportioning in determining the corner location.

N/A

Show the history of record in chronological order from Original Government Survey to present.

(1) Original Corner established by Robert Clark in 1833.

I, Robert M. Lampman, certify that the corner location shown on this record was determined by me or under my direction and control and that this U.S. Public Land Survey Monument Record is correct to the best of my knowledge and belief.


Robert M. Lampman R.L.S. S-1296

9-20-99
Date

