

GRANT COUNTY CERTIFIED LAND CORNER

CORNER NUMBER 07

CERTIFICATE:

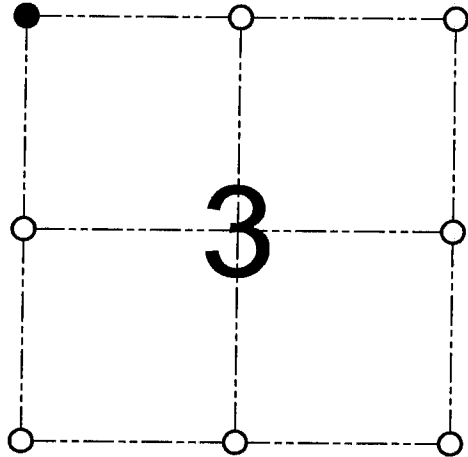
I, Larry L. Austin, do hereby certify that on the 24th day of October, 2000, I found evidence of the Northwest corner of Section 03, Town 2 North, Range 2 West, of the 4th Principal Meridian, and I re-established said corner according to the Wisconsin statutes as shown and described hereon.

Dated this 25th day of October, 2000

Larry L. Austin
Larry L. Austin S-1903



Grant County Cor.
N 463214.4
E 848005.9



● = CORNER LOCATION
NORTHWEST CORNER OF
SECTION 3, T 2 N R 2 W
TOWN OF PARIS

HISTORY OF ORIGINAL CORNER ESTABLISHMENT:

Corner was set in 1833 by Lucius Lyon.
In 1988 Douglas Malliet set a #6 iron bar at this location.

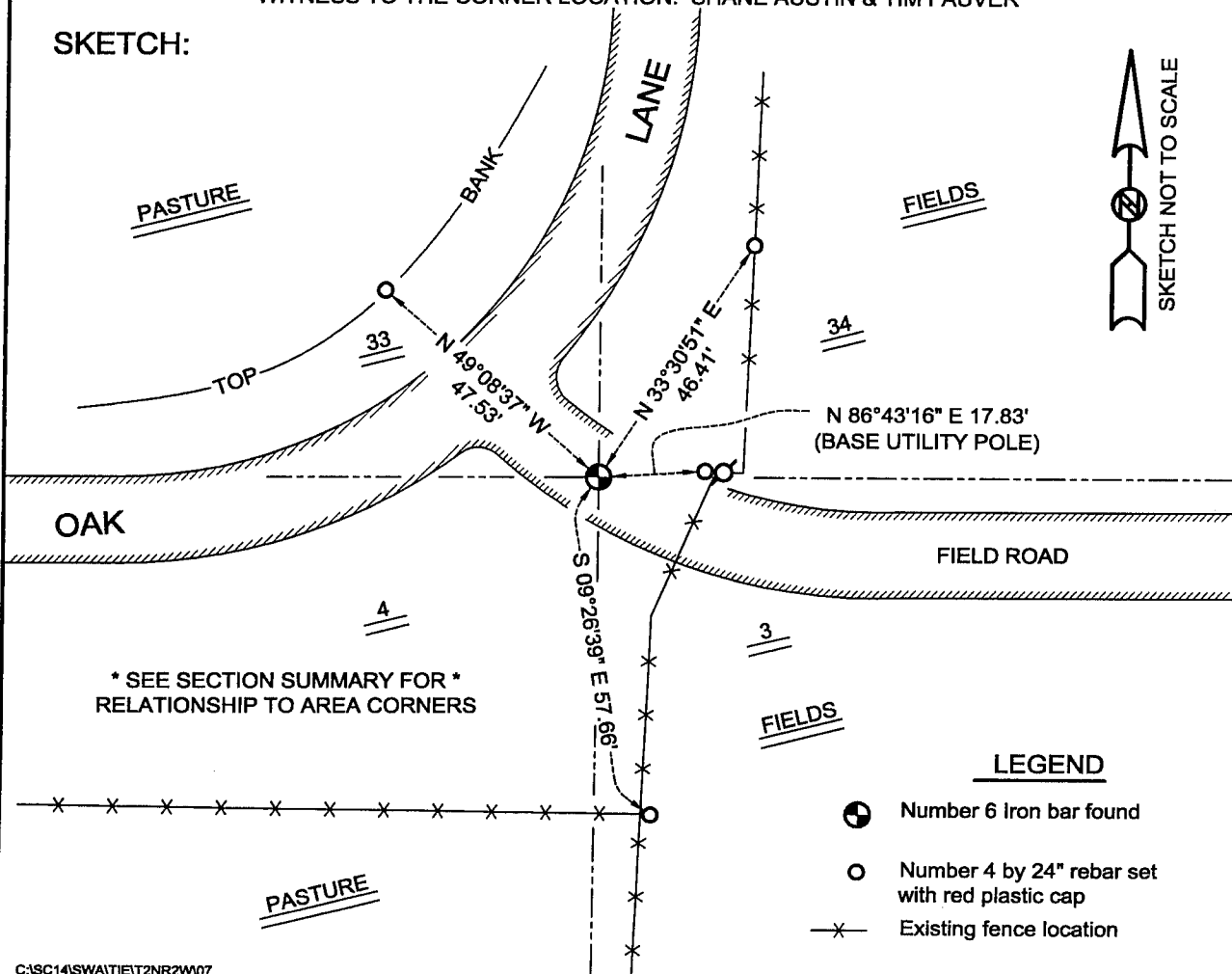
DESCRIPTION OF CORNER EVIDENCE FOUND:

I found the existing #6 iron bar and accepted it's location
after an E.D.M. & G.P.S. traverse of the area.

DESCRIPTION OF CORNER AND WITNESS MONUMENTS, references and accessories used to perpetuate the original or re-established location of this corner

WITNESS TO THE CORNER LOCATION: SHANE AUSTIN & TIM FAUVER

SKETCH:



* SEE SECTION SUMMARY FOR *
RELATIONSHIP TO AREA CORNERS

LEGEND

- Number 6 iron bar found
- Number 4 by 24" rebar set with red plastic cap
- x— Existing fence location