

GRANT COUNTY CERTIFIED LAND CORNER

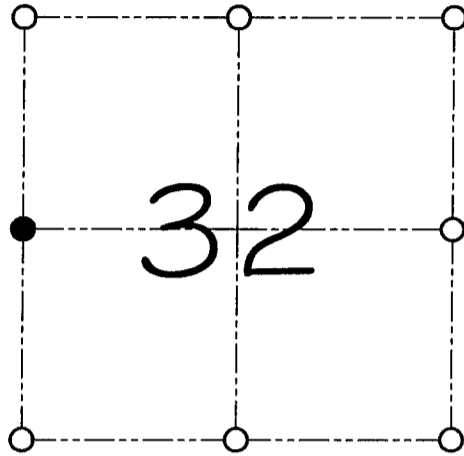
CORNER NUMBER 115

CERTIFICATE:

I, Larry L. Austin, do hereby certify that on the 6th day of March, 2000, I found no evidence of the West 1/4 corner of Section 32, Town 3 North, Range 2 West, of the 4th Principal Meridian, and I re-established said corner according to the Wisconsin statutes as shown and described hereon.

Dated this 13th day of March, 2000

Larry L. Austin
Larry L. Austin S-1903



● = CORNER LOCATION

**WEST 1/4 CORNER OF
SECTION 32, T 3 N R 2 W
TOWN OF HARRISON**

HISTORY OF ORIGINAL CORNER ESTABLISHMENT:

Corner was originally set in 1832 by Robert Clark.
No other record of the corner was found.

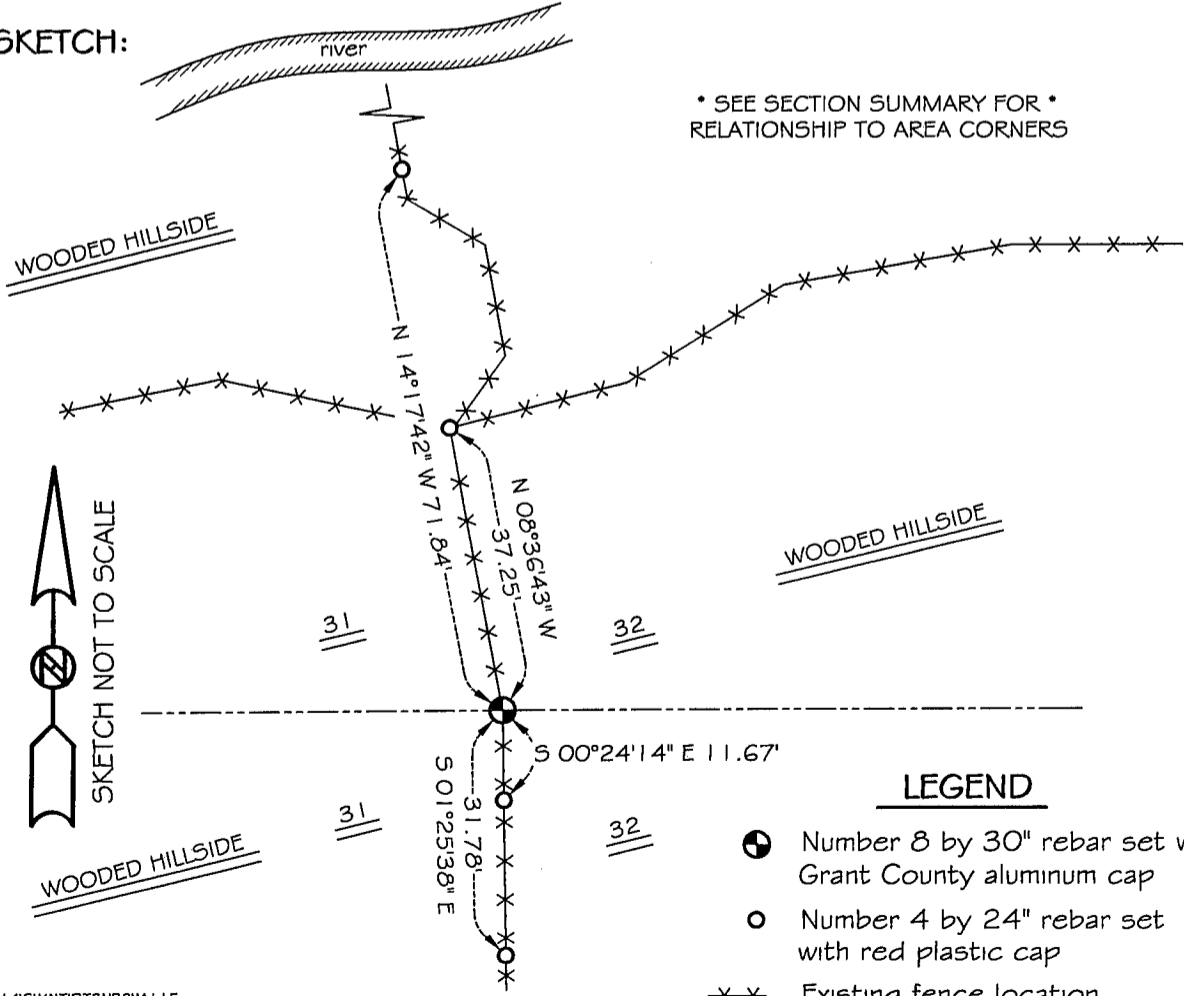
DESCRIPTION OF CORNER EVIDENCE FOUND:

I found no evidence to the location of the corner. I set the corner midway online between the Northwest and Southwest corners of Section 32. I verified this location using E.D.M. and G.P.S methods.

DESCRIPTION OF CORNER AND WITNESS MONUMENTS, references and accessories used to perpetuate the original or re-established location of this corner

WITNESS TO THE CORNER LOCATION: SHELBY BLINDERT & SHAWN BEHREDS

SKETCH:



* SEE SECTION SUMMARY FOR *
RELATIONSHIP TO AREA CORNERS

LEGEND

- Number 8 by 30" rebar set with Grant County aluminum cap
- Number 4 by 24" rebar set with red plastic cap
- ×× Existing fence location