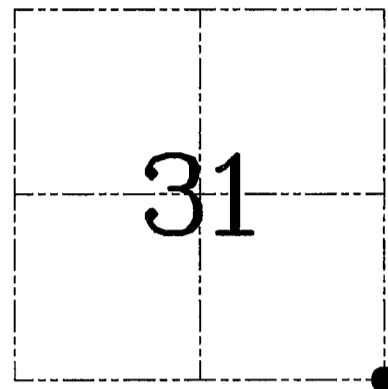
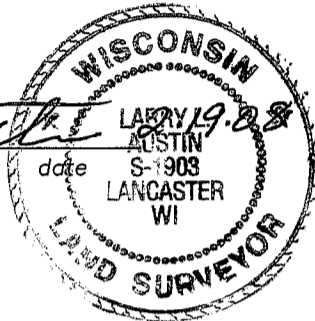


U.S. PUBLIC LAND SURVEY MONUMENT RECORD – GRANT COUNTY, WI
Section 31, Town 3 North Range 2 West, Town of Harrison

CERTIFICATE

I, Larry L. Austin, do hereby certify that the corner location on this record was determined by me and/or under my direct supervision and that this U.S. public land survey monument record is correct and complete to the best of my knowledge and belief.

Larry L. Austin
 Larry L. Austin, S-1903



● = CORNER LOCATION

THE PURPOSE OF THIS TIESHEET IS TO REVISE THE SKETCH ON THE PREVIOUS TIESHEET FILED BY ME ON 11-7-01.

HISTORY OF CORNER ESTABLISHMENT

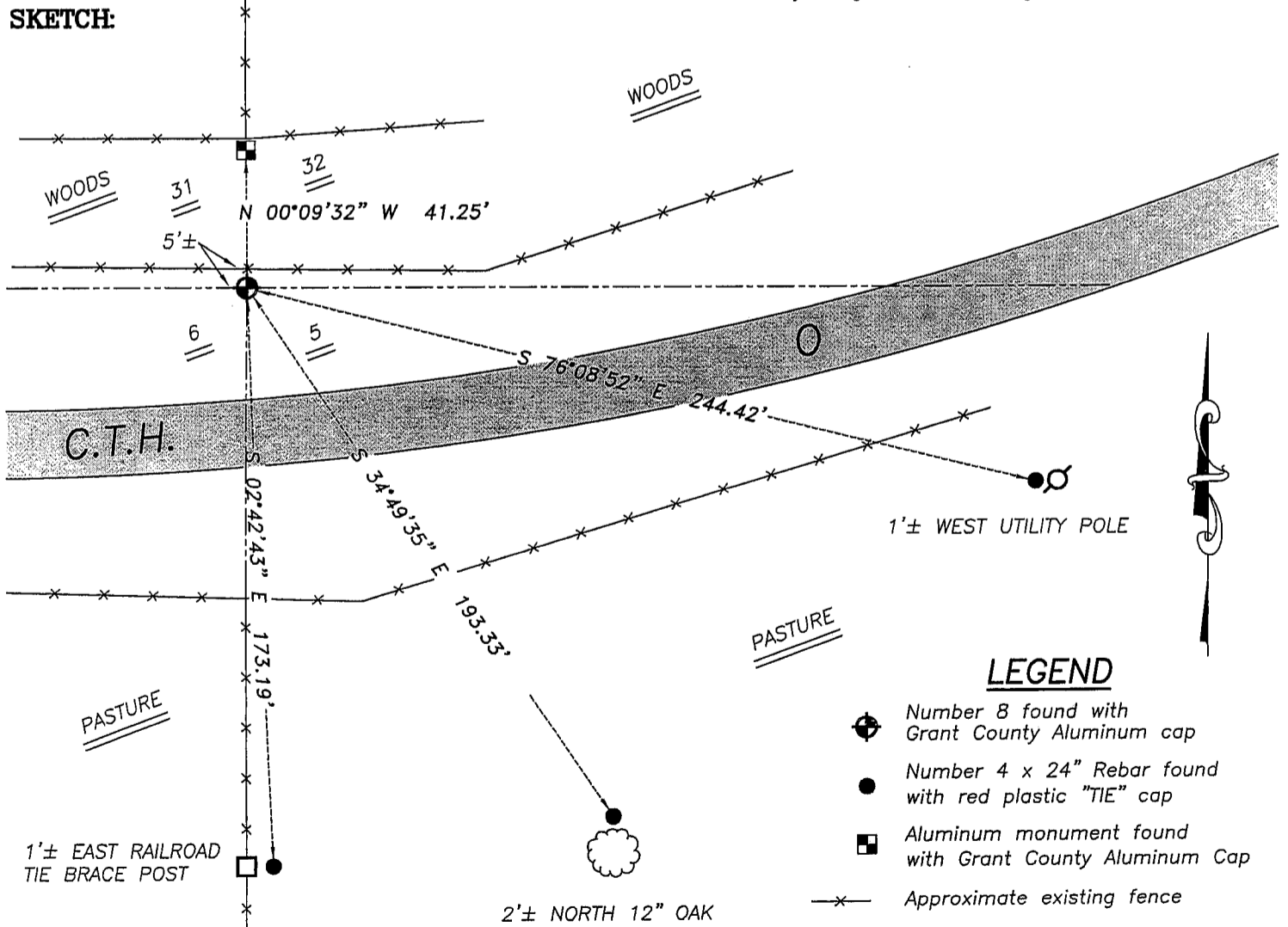
Corner was originally set in 1832 by Lucius Lyon.
 In 1993 I set a Grant County aluminum monument at a fence corner.

DESCRIPTION OF CORNER EVIDENCE FOUND

I found the Grant County aluminum monument and did not accept it's location. I set the corner 41.25' South of the fence corner based on Volume 651, Page 325, Grant County Registry. Verified this location using EDM & GPS methods.

DESCRIPTION OF CORNER AND WITNESS MONUMENTS, references and accessories used to perpetuate the original or re-established location of this corner. Witnesses to corner location Bobby Sedgwick & Brad Digman & Shane Austin

SKETCH:



LEGEND

- Number 8 found with Grant County Aluminum cap
- Number 4 x 24" Rebar found with red plastic "TIE" cap
- Aluminum monument found with Grant County Aluminum Cap
- x— Approximate existing fence

SKETCH NOT TO SCALE



Austin Engineering LLC

4211 HWY 81 E, LANCASTER, WI 53813
 PHONE 608-723-6363 FAX 608-723-6702

JOB NUMBER 07S063
 FIELDBOOK: TDSR, 2703
 G:\T3NR2W\32
 H:\TIE\T3NR2W\131

DRAWN BY: SW AUSTIN
 APPROVED: LL AUSTIN

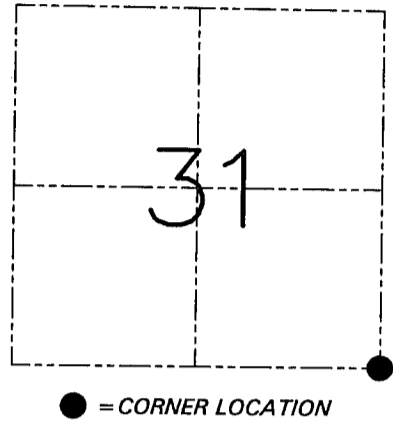
U.S. PUBLIC LAND SURVEY MONUMENT RECORD - GRANT COUNTY, WI
 Section 31, Town 3 North Range 2 West, Town of Harrison

CERTIFICATE

I, Larry L. Austin, do hereby certify that the corner location on this record was determined by me and/or under my direct supervision and that this U.S. public land survey monument record is correct and complete to the best of my knowledge and belief.

Dated this 7th day of November, 2001

Larry L. Austin
 Larry L. Austin S-1903



HISTORY OF CORNER ESTABLISHMENT

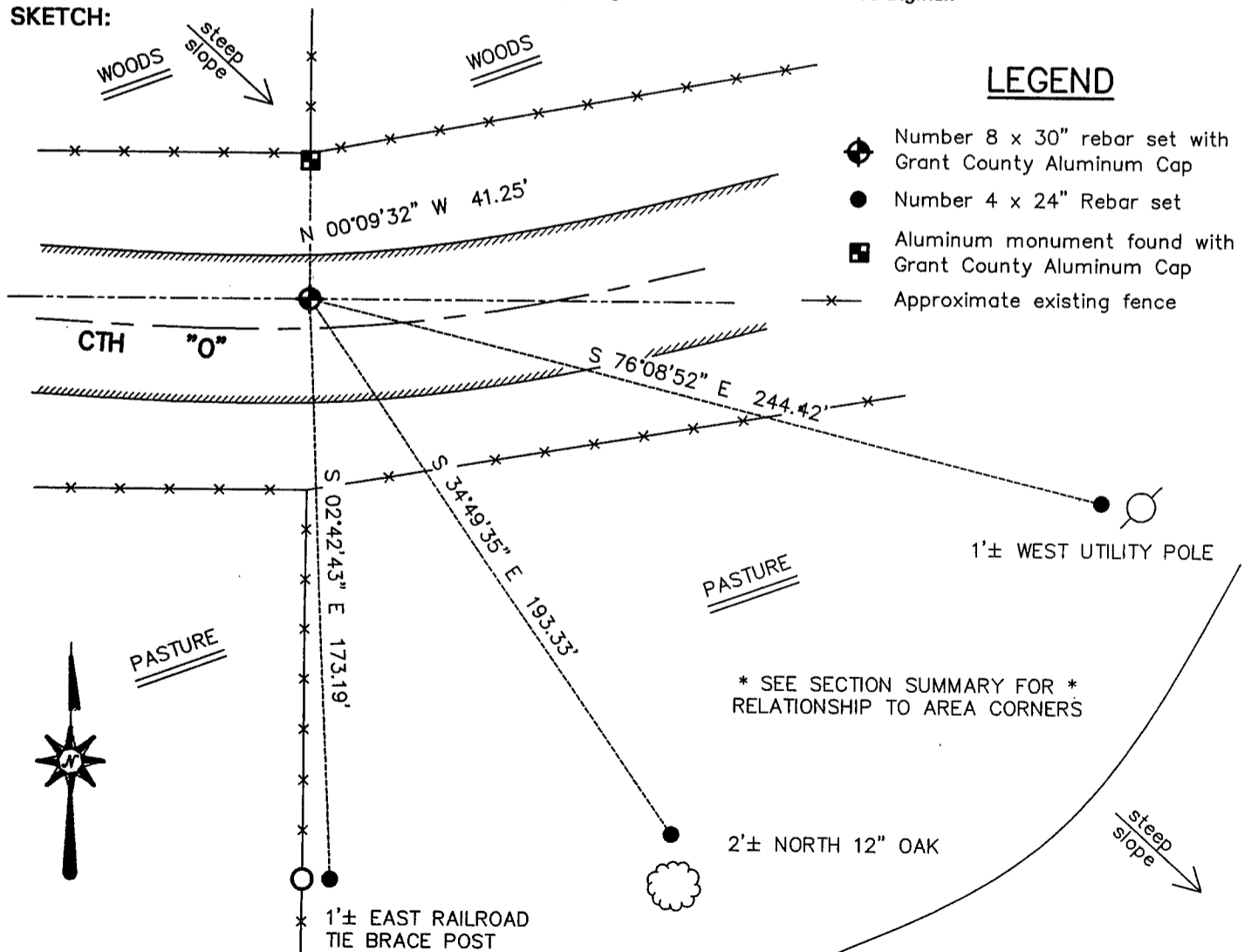
Corner was originally set in 1832 by Lucius Lyon.
 In 1993 I set a Grant County aluminum monument at a fence corner.

DESCRIPTION OF CORNER EVIDENCE FOUND

I found the Grant County aluminum monument and did not accept it's location. I set the corner 41.25' South of the fence corner based on Volume 651, Page 325, Grant County Register. Verified this location using EDM & GPS methods.

DESCRIPTION OF CORNER AND WITNESS MONUMENTS, references and accessories used to perpetuate the original or re-established location of this corner. Witnesses to the corner location Bobby Sedgwick & Shane Austin & Brad Digman

SKETCH:



SKETCH NOT TO SCALE

AUSTIN ENGINEERING, LLC

4211 HWY 81 EAST, LANCASTER, WI 53813
 PHONE 608-723-6363 FAX 608-723-6702

FIELDBOOK: SDR33, 2114
 G: \T3NR2W\32
 C: \SWA\TIE\T3NR2W\131
 CREW: BS-SB-SA-TF-BD

DRAWN BY: SW AUSTIN
 APPROVED: LL AUSTIN

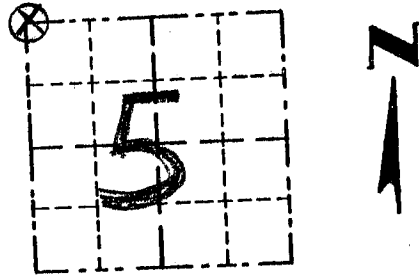
CORNER NUMBER 131

GRANT COUNTY

Survey Monument Record

TYPE OF MONUMENT ALUM. MONUMENT
STATE PLANE COORDINATES: N _____
E _____
ELEVATION — M.S.L. DATUM: _____
THETA ANGLE: _____
FIELD BOOK: 9320
PAGE _____

CORNER NO. _____
SECTION 5
TOWN 2 N
RANGE 2 W



LOCATION
(Indicated by "X")

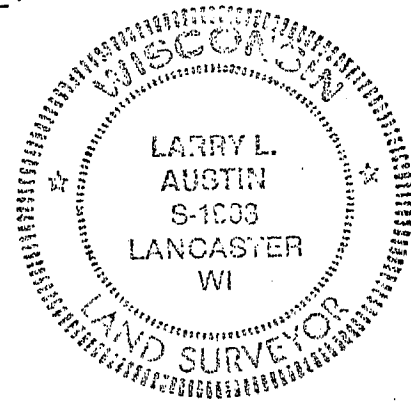
BASIS FOR MONUMENT LOCATION

(Use reverse side if necessary)

Show info such as: History of corner, with reference to Vol. and pg., dates, surveyor; exact description of monument replaced; if location computed, by taped or EDM traverse; landowner, remarks, etc.

NO RECORD FOUND OF CORNER SINCE ORIGINAL SURVEYS; CORNER WAS SET BASED ON OCCUPATION & VERIFIED BY EDM TRAVERSE.

SEAL:



CERTIFIED CORRECT

Larry L. Austin
Registered Land Surveyor
DATE: 12/9/93

TIE SKETCH

Show at least three (3) ties and monument

LEGEND

- ALUM MONUMENT
- 3/8" x 12" STEEL SPIKES

X — X FENCE

