

U.S. PUBLIC LAND SURVEY MONUMENT RECORD - GRANT COUNTY, WI

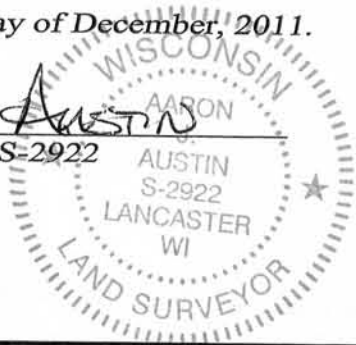
Section 31, Town 3 North Range 2 West, Town of Harrison

CERTIFICATE:

I, Aaron J. Austin, do hereby certify that the corner location on this record was determined by me and/or under my direct supervision and that this U.S. Public Land Survey Monument Record is correct and complete to the best of my knowledge and belief.

Dated this 2nd day of December, 2011.

Aaron J. Austin
 Aaron J. Austin, S-2922



● = CORNER LOCATION

HISTORY OF CORNER ESTABLISHMENT:

Corner originally set in 1833 by Robert Clark. In 1848 Geo. Stuntz tied to the original corner. This corner was shown on a Plan and Profile for County Highway "O" Project No. S 0573(5). No other record of this corner was found.

DESCRIPTION OF CORNER EVIDENCE FOUND:

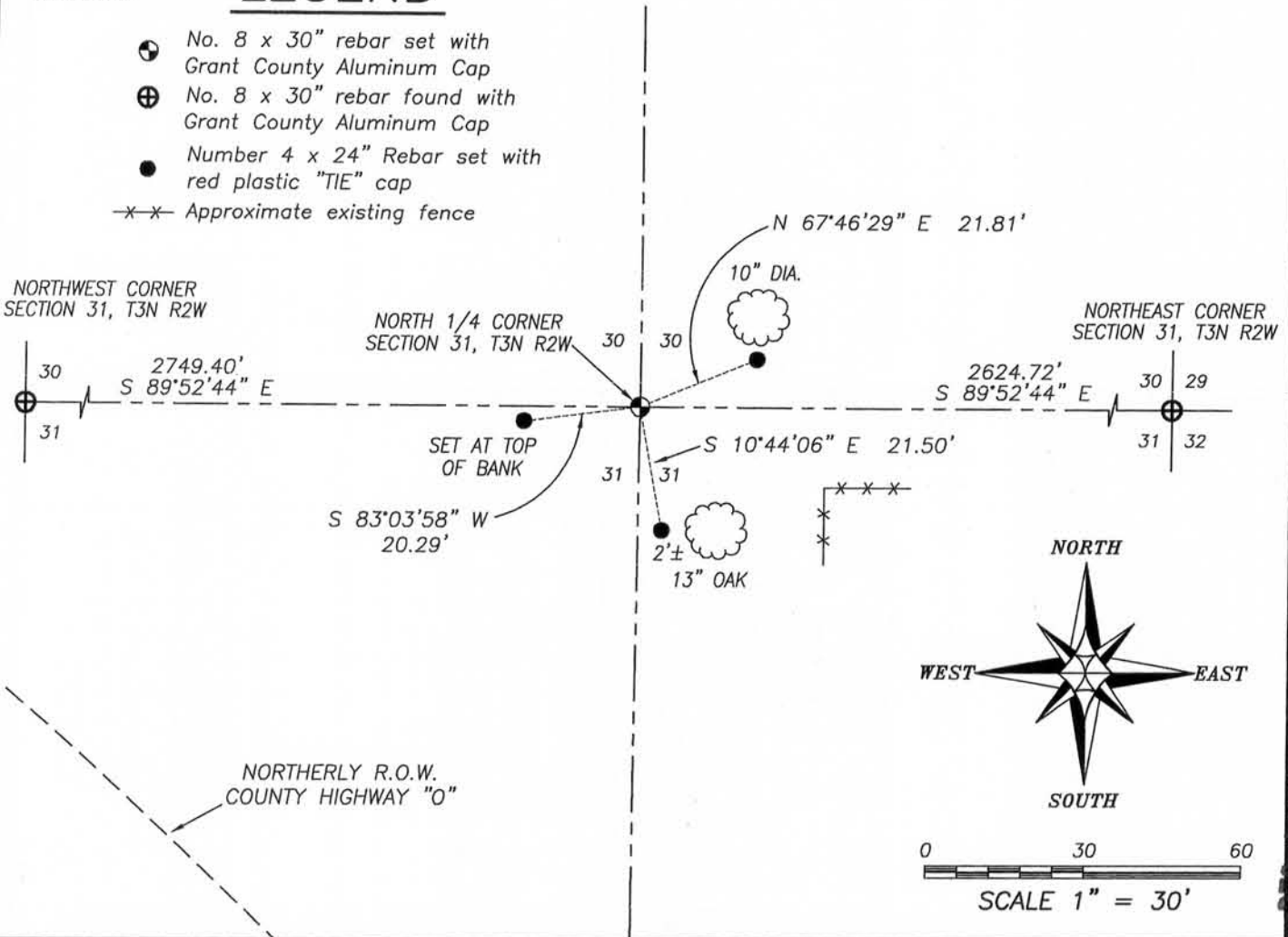
No evidence of the original corner was found. I reset the corner proportionally between the Northwest and Northeast corners of Section 31. I verified this location by E.D.M. and G.P.S. methods.

DESCRIPTION OF CORNER AND WITNESS MONUMENTS, references and accessories used to perpetuate the original or re-established location of this corner. Witnesses to corner location Bobby Sedgwick & Shelby Blindert

SKETCH:

LEGEND

- No. 8 x 30" rebar set with Grant County Aluminum Cap
- ⊕ No. 8 x 30" rebar found with Grant County Aluminum Cap
- Number 4 x 24" Rebar set with red plastic "TIE" cap
- x-x- Approximate existing fence



DEC 14 2011



Austin Engineering LLC
 austinengineeringllc.com
 4211 HWY 81 E, LANCASTER, WI 53813
 PHONE: 608-723-6363 FAX: 608-723-6702

JOB NO: 11s066
 G:\T3NR3W\36
 H:\TIE\T3NR2W\112

FIELDBOOK: TDSR
 DRAWN BY: AJ AUSTIN
 CREW: BS-SB