

GRANT COUNTY CERTIFIED LAND CORNER

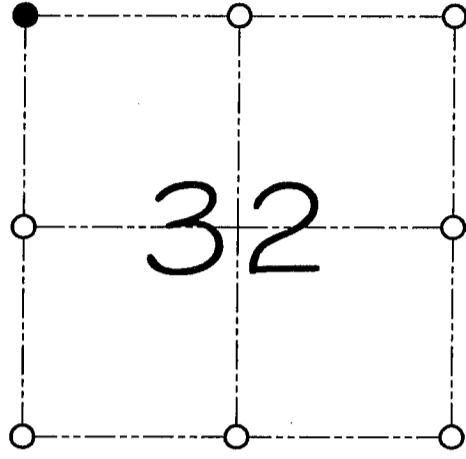
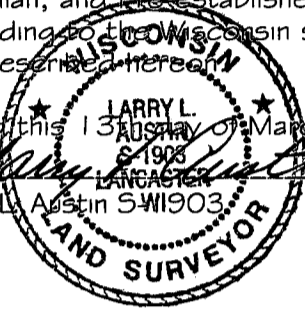
CORNER NUMBER 111

CERTIFICATE:

I, Larry L. Austin, do hereby certify that on the 6th day of March, 2000, I found evidence of the Northwest corner of Section 32, Town 3 North, Range 2 West, of the 4th Principal Meridian, and I re-established said corner according to the Wisconsin statutes as shown and described hereon.

Dated this 13th day of March, 2000

Larry L. Austin S.W.1903



● = CORNER LOCATION

**NORTHWEST CORNER OF
SECTION 32, T 3 N R 2 W
TOWN OF HARRISON**

SEAL

HISTORY OF ORIGINAL CORNER ESTABLISHMENT:

Corner was originally set in 1832 by Robert Clark.
No other record of the corner was found.

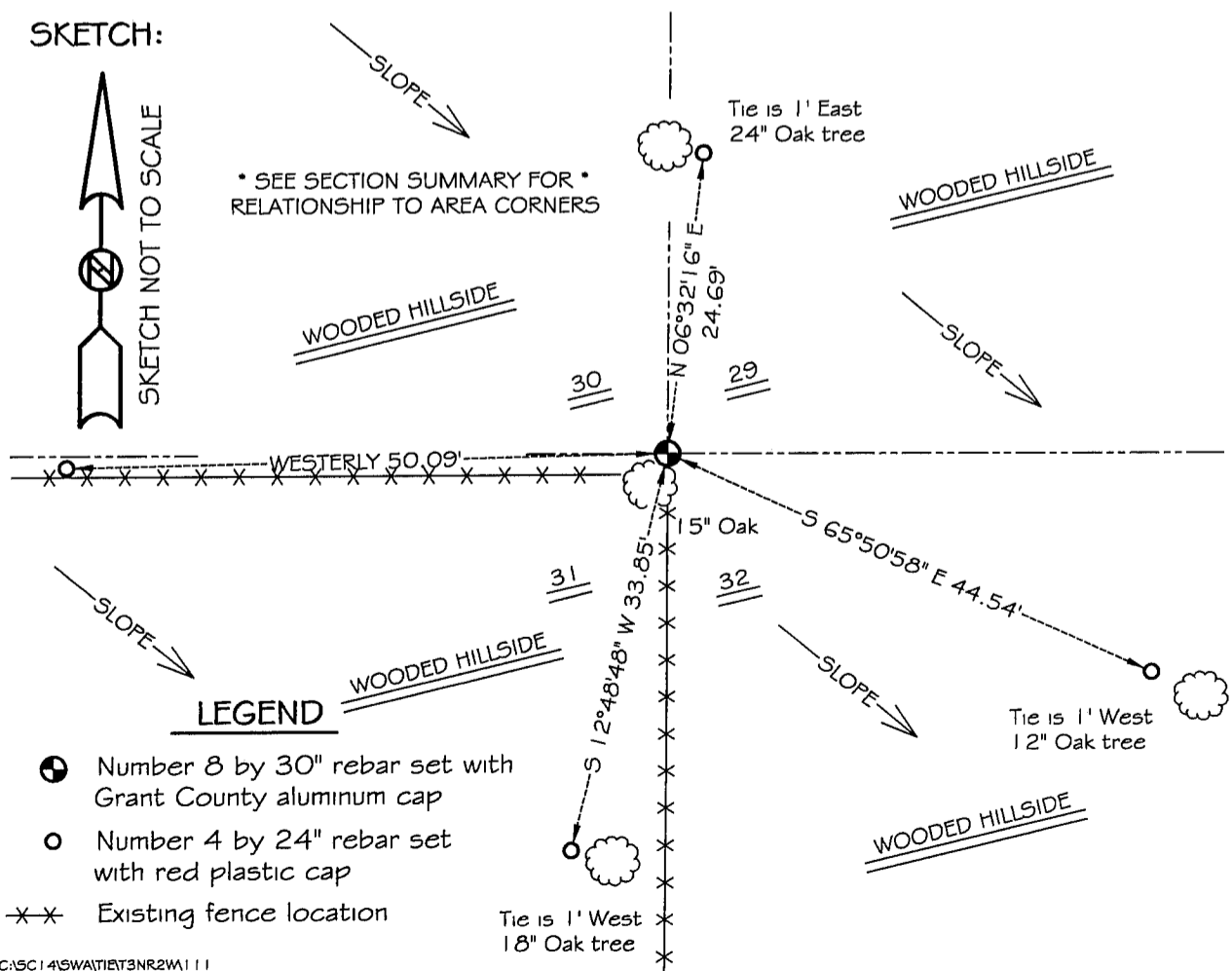
DESCRIPTION OF CORNER EVIDENCE FOUND:

I found an existing fence corner and accepted it's location
after an E.D.M. and G.P.S. traverse of the area.

DESCRIPTION OF CORNER AND WITNESS MONUMENTS, references and accessories used to perpetuate the original or re-established location of this corner

WITNESS TO THE CORNER LOCATION: SHELBY BLINDERT & SHAWN BEHREND

SKETCH:



LEGEND

- Number 8 by 30" rebar set with Grant County aluminum cap
- Number 4 by 24" rebar set with red plastic cap
- ×× Existing fence location