

U.S. PUBLIC LAND SURVEY MONUMENT RECORD - GRANT COUNTY, WI

Section 29, Town 3 North Range 2 West, Town of Harrison

CERTIFICATE:

I, Aaron J. Austin, do hereby certify that the corner location on this record was determined by me and/or under my direct supervision and that this U.S. Public Land Survey Monument Record is correct and complete to the best of my knowledge and belief.

Dated this 22nd day of August, 2013.

Aaron J. Austin
 Aaron J. Austin, S-2922



● = CORNER LOCATION

HISTORY OF CORNER ESTABLISHMENT:

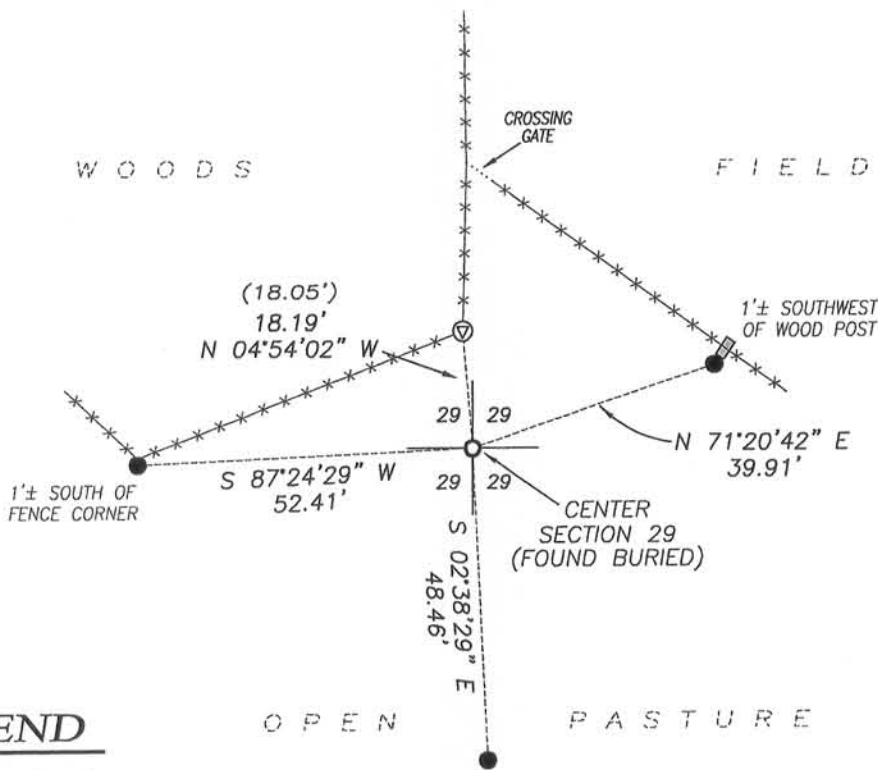
Corner was not set with original survey.
 1850 Struntz tied this corner on a survey filed Book B, Page 249.
 1857 Hayden showed this corner on a survey filed Book C, Page 170.
 1982 Brys prepared a U.S. Public Land Survey Monument Record filed in Book H, Page 117.
 1997 L. Austin noted corner was reset from existing ties on a survey filed in Book 1, Page 52 and Page 86.
 2001 Larry Austin tied to the corner on a survey filed in Book 9, Page 82.

DESCRIPTION OF CORNER EVIDENCE FOUND:

I found and accepted a 3/4" rebar buried at the location retraced by Larry Austin on the surveys stated above. Only 1 tie was recovered from Ronald Brys U.S. Public Land Survey Monument Record, therefore I set 3 additional ties and verified this location by G.P.S. methods.

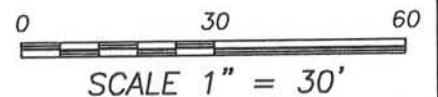
DESCRIPTION OF CORNER AND WITNESS MONUMENTS, references and accessories used to perpetuate the original or re-established location of this corner. Witnesses to corner location Shane Austin.

SKETCH:



LEGEND

- No. 6 rebar found
- Number 4 x 24" Rebar set with red plastic "TIE" cap
- ▽ Railroad spike found
- ▣ Wood post
- x-x- Approximate existing fence
- () Recorded as



Austin Engineering LLC
 austinengineeringllc.com

4211 HWY 81 E, LANCASTER, WI 53813
 PHONE: 608-723-6363 FAX: 608-723-6702

JOB NO: 13s113
 G:\13s113
 H:\TIE\T3NR2W\95.5

FIELDBOOK: TDSR
 DRAWN BY: AJ AUSTIN
 CREW: SW AUSTIN

95.5

AUG 28 2013

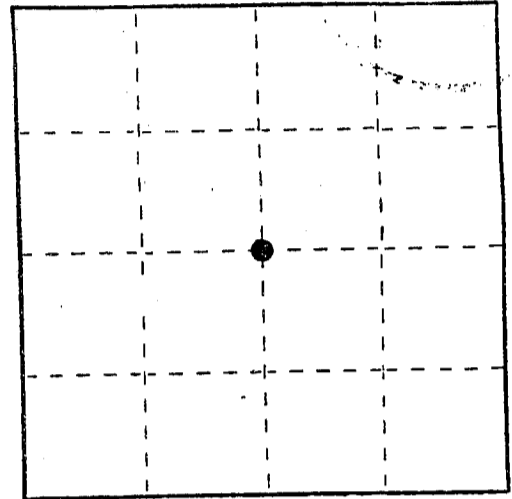
U. S. PUBLIC LAND SURVEY MONUMENT RECORD

INSTRUCTIONS :

This record shall show the location of the corner and shall include all of the following nine elements (a through i).

- (a) Identify the corner by reference to the U.S. public land survey system.
 O = Corner monument restored.

Center of Section 29, T. 3 N., R. 2 W.,
 Township of Harrison, Grant County,
 Wisconsin.



- (b) Describe any record evidence, monument evidence, occupational evidence, testimonial evidence or any other material evidence you considered, and whether the monument was found or placed.

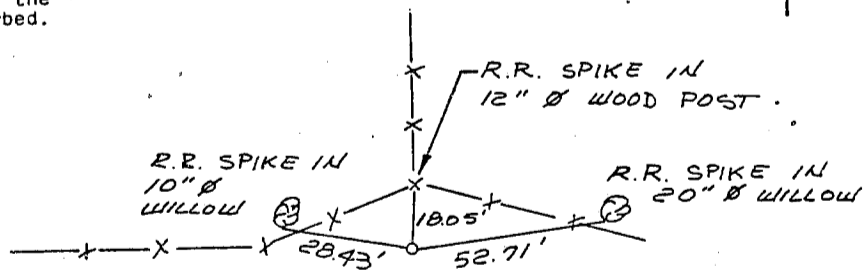
No record since original government survey.

Old fences to the west and north of corner.

Monument set at projected intersection of fences. Location verified by testimony from landowner to the northwest of corner.

- (c) In the plan view drawing below, provide reference ties to at least 4 witness monuments, or, if the location is within a municipality, to at least 2 witness monuments. (Witness monuments shall be made of concrete, natural stone, iron or other equally durable material.)
 Describe witness monuments.

- (d) Show a plan view drawing depicting the relevant monuments and reference ties which is sufficient in detail to enable accurate relocation of the corner monument if the corner monument is disturbed. Indicate north.



LEGEND

O..... 3/4" Ø REBAR SET

IAN

0955

(e) Describe any material discrepancy between the location of the corner as restored or reestablished and the location of that corner as previously restored or reestablished by distance and direction. Show the discrepancy on the plan view drawing under (d), above. Show the distances between the corner as previously restored or reestablished and (1) the corner as restored or reestablished, and (2) to at least 2 of the witness monuments shown on the drawing in (d), above.

None

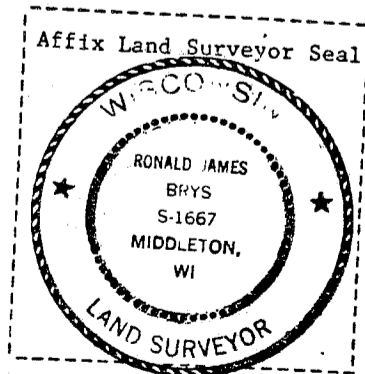
(f) Was the corner restored through acceptance of (1) an obliterated evidence location, or, (2) a found perpetuated location?

Corner was restored through acceptance of a found perpetuated location.

(g) Was the corner reestablished through lost corner proportionate methods? If so, show the method, including the directions and distances to other public land survey corners used as evidence or used for proportioning in determining the corner location?

No adjacent corners found.

(i) Ronald James Brys
I, Ronald James Brys, certify that the corner location shown on the drawing was determined by me or under my direction and supervision that this U.S. Public Land Survey Monument Record is accurate to the best of my knowledge and belief.



Ronald Brys

11-26-82