

# GRANT COUNTY CERTIFIED LAND CORNER

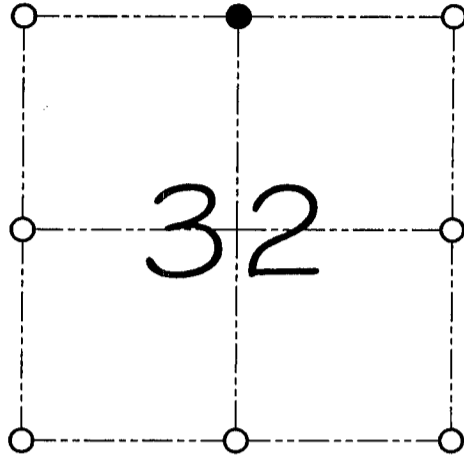
CORNER NUMBER 110

**CERTIFICATE:**

I, Larry L. Austin, do hereby certify that on the 6th day of March, 2000, I found evidence of the North 1/4 corner of Section 32, Town 3 North, Range 2 West, of the 4th Principal Meridian, and I re-established said corner according to the Wisconsin statutes as shown and described hereon.

Dated this 13th day of March, 2000

*Larry L. Austin*  
Larry L. Austin S-1903



● = CORNER LOCATION

**NORTH 1/4 CORNER OF  
SECTION 32, T 3 N R 2 W  
TOWN OF HARRISON**

**HISTORY OF ORIGINAL CORNER ESTABLISHMENT:**

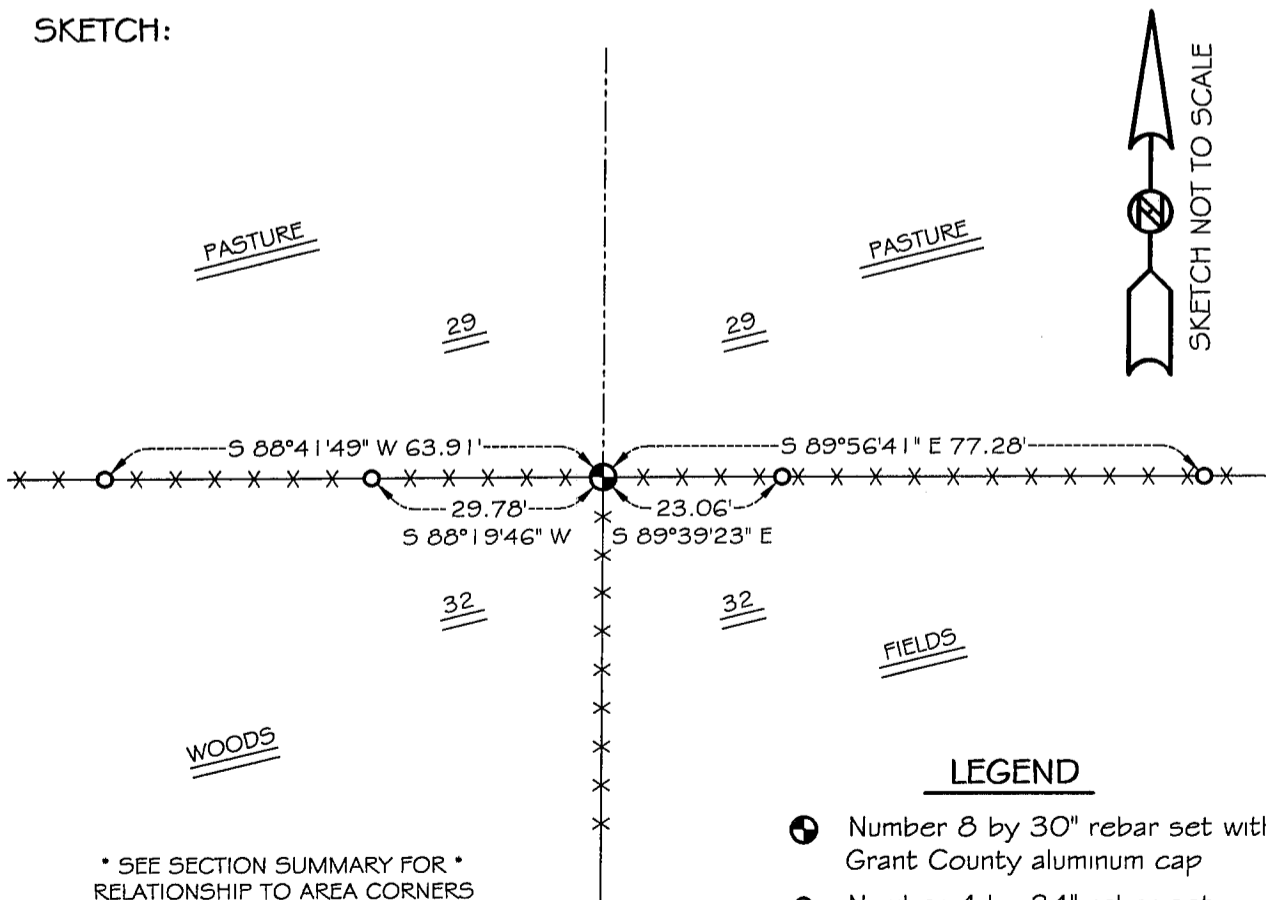
Corner was set in 1832 by Robert Clark.  
No other record of the corner was found.

**DESCRIPTION OF CORNER EVIDENCE FOUND:**

I found an existing fence corner and accepted it's location after an E.D.M. and G.P.S. traverse of the area.

**DESCRIPTION OF CORNER AND WITNESS MONUMENTS, references and accessories used to perpetuate the original or re-established location of this corner**  
WITNESS TO THE CORNER LOCATION: SHELBY BLINDERT & SHAWN BEHREND

**SKETCH:**



\* SEE SECTION SUMMARY FOR \*  
RELATIONSHIP TO AREA CORNERS

**LEGEND**

- Number 8 by 30" rebar set with Grant County aluminum cap
- Number 4 by 24" rebar set with red plastic cap
- ×× Existing fence location